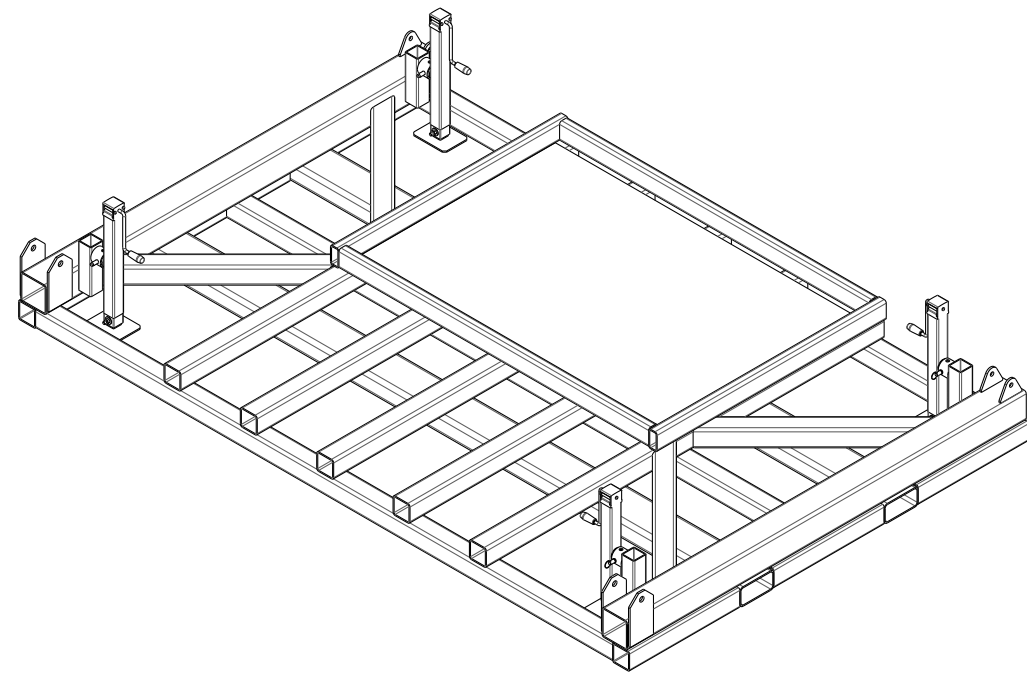


STEP 1: UN-CRATE AND SEPERATE COMPONENTS

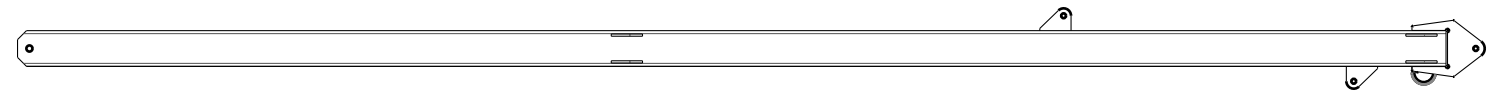
NOTES: COMPONENT QUANTITIES AND VISUAL APPEARANCE DEPENDING UPON WHICH MODEL NUMBER WAS SUPPLIED.

A



BASE ASSEMBLY QTY. 1

B



UPRIGHT ASSY LHS QTY. 1

C



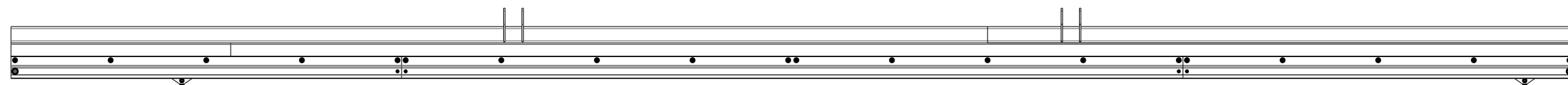
UPRIGHT ASSY RHS QTY. 1

D



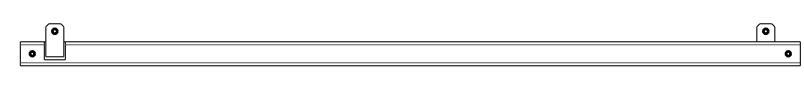
REAR GUSSET TUBE QTY. 2

E



GLIDE RAIL ASSY QTY. 1

F



HORIZONTAL SUPPORT QTY. 2

G



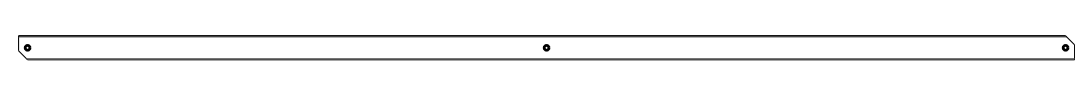
RAIL SUPPORT ARM QTY. 2

H



FRONT GUSSET TUBE QTY. 2

J

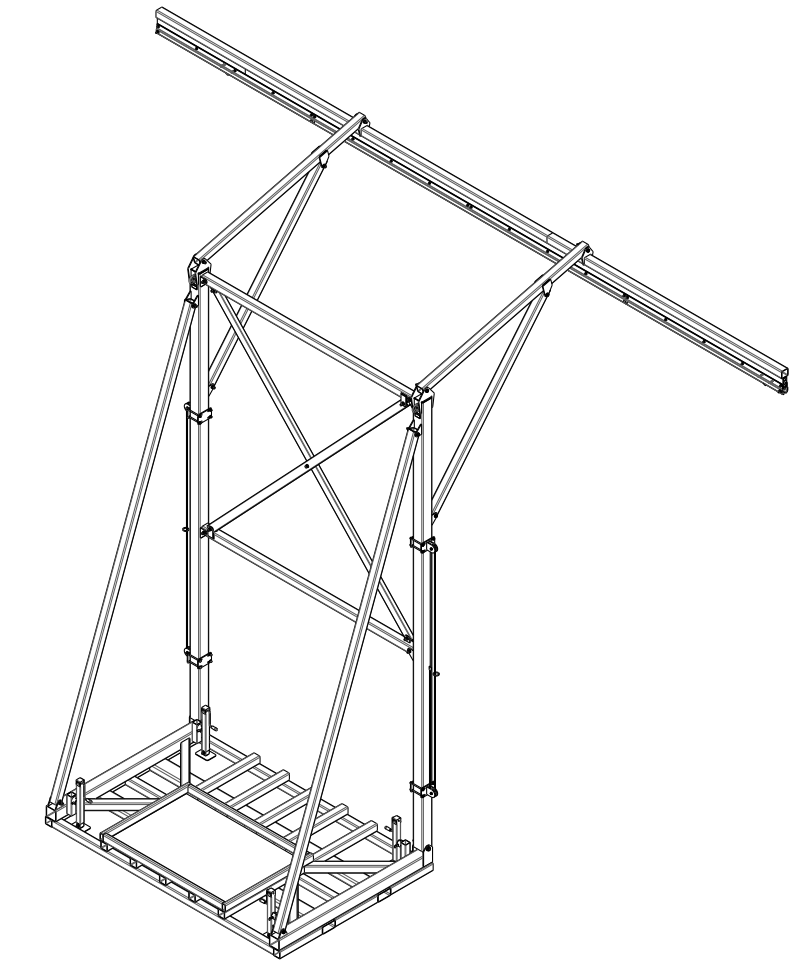


CROSS SUPPORT TUBE QTY. 2

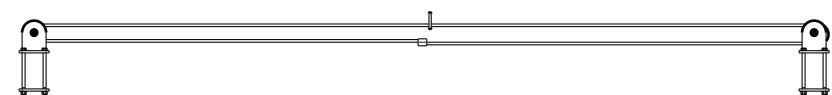
K



COUNTERWEIGHT BLOCK



OPTIONAL ACCESORIES



8540485 - TAGLINE RETRIEVAL SYSTEM

TORQUE SETTINGS

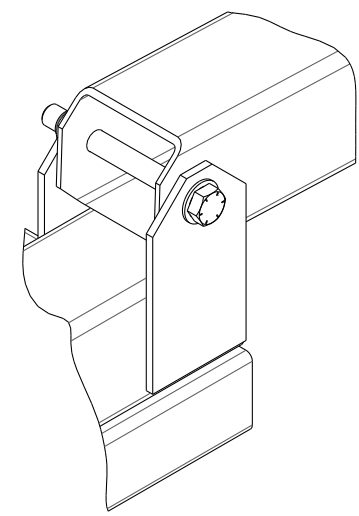
BOLT	TORQUE	
1/2-13	60	FT-LB
	81	N-M
5/8-11	75	FT-LB
	101	N-M
3/4-10	130	FT-LB
	176	N-M
1-8	210	FT-LB
	284	N-M

UNLESS OTHERWISE SPECIFIED DIMENSIONS ARE IN INCHES		THIS DRAWING AND THE INFORMATION CONTAINED HEREIN IS AND SHALL REMAIN THE PROPERTY OF CAPITAL SAFETY, AND CANNOT BE USED OR REPRODUCED WITHOUT PERMISSION. ANY MATERIAL AND/OR PART SUBSTITUTIONS AND/OR CHANGES MUST BE AUTHORIZED IN WRITING BY CAPITAL SAFETY PRIOR TO USE.		Capital Safety 3833 SALA Way RED WING, MN 55066-5005 651-388-8282 www.capitalsafety.com	capital SAFETY
TOLERANCES ON: 2 PL DECIMALS ± 0.01 3 PL DECIMALS ± 0.005 ANGLES ± 0.5° FRACTIONS ±		PROE			
INITIALS	DATE	TITLE			
DRAWN	NM 07/12/11	DUAL POST COUNTERWEIGHTED RAIL SYSTEM ASSEMBLY INSTRUCTION			
CHECKED		DRAWING NUMBER			
APPROVED		5903234			
SHEET 1 OF 8		DO NOT SCALE DRAWING		REVISION	
				A	

STEP 2: ASSEMBLE UPRIGHTS AND CROSS MEMBERS

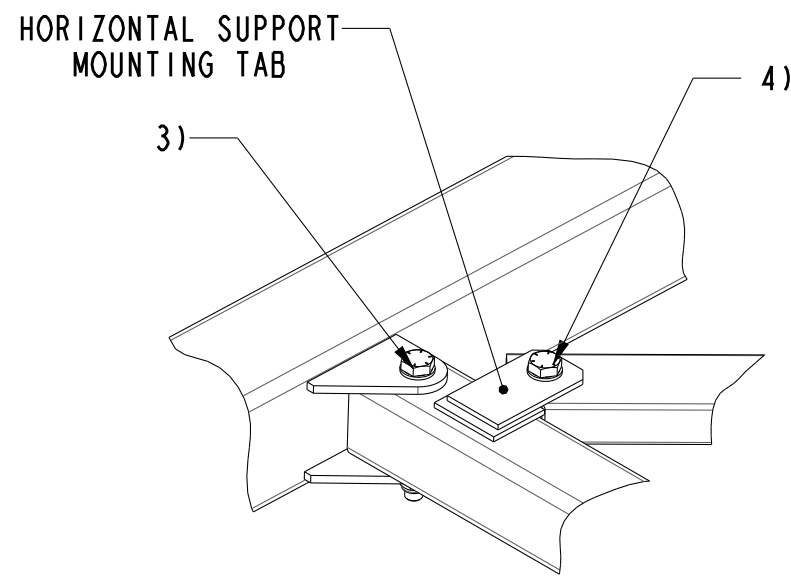
- 1) LAY THE UPRIGHT ASSEMBLIES (B&C) OUT ONTO THE GROUND AS SHOWN.
- 2) CONNECT THE UPRIGHT ASSEMBLIES (B&C) TO THE BASE ASSEMBLY (A.) FASTEN USING 1" HARDWARE (SEE DETAIL A).
- 3) CONNECT THE HORIZONTAL SUPPORTS (F) TO THE UPRIGHT ASSEMBLIES (B&C) SO THAT THE TABS ARE FACING INWARD TOWARD EACH OTHER. FASTEN USING 3/4" HARDWARE (SEE DETAIL B).
- 4) CONNECT CROSS SUPPORT TUBES (J) AND ATTACH TO HORIZONTAL SUPPORT MOUNTING TABS (SEE DETAIL B). FASTEN USING 3/4" HARDWARE (SEE DETAIL C).

NOTE: A FORKLIFT OR CRANE MAY BE USED TO LIFT THE ASSEMBLY OFF THE GROUND TO MAKE FASTENING EASIER.



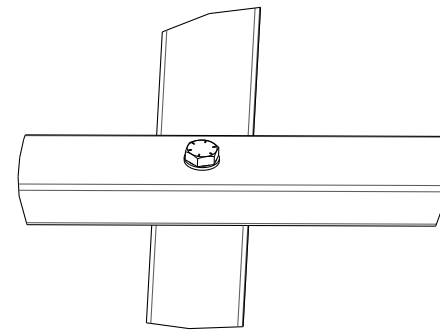
DETAIL A
SCALE 0.125

TYPICAL OF BOTH SIDES

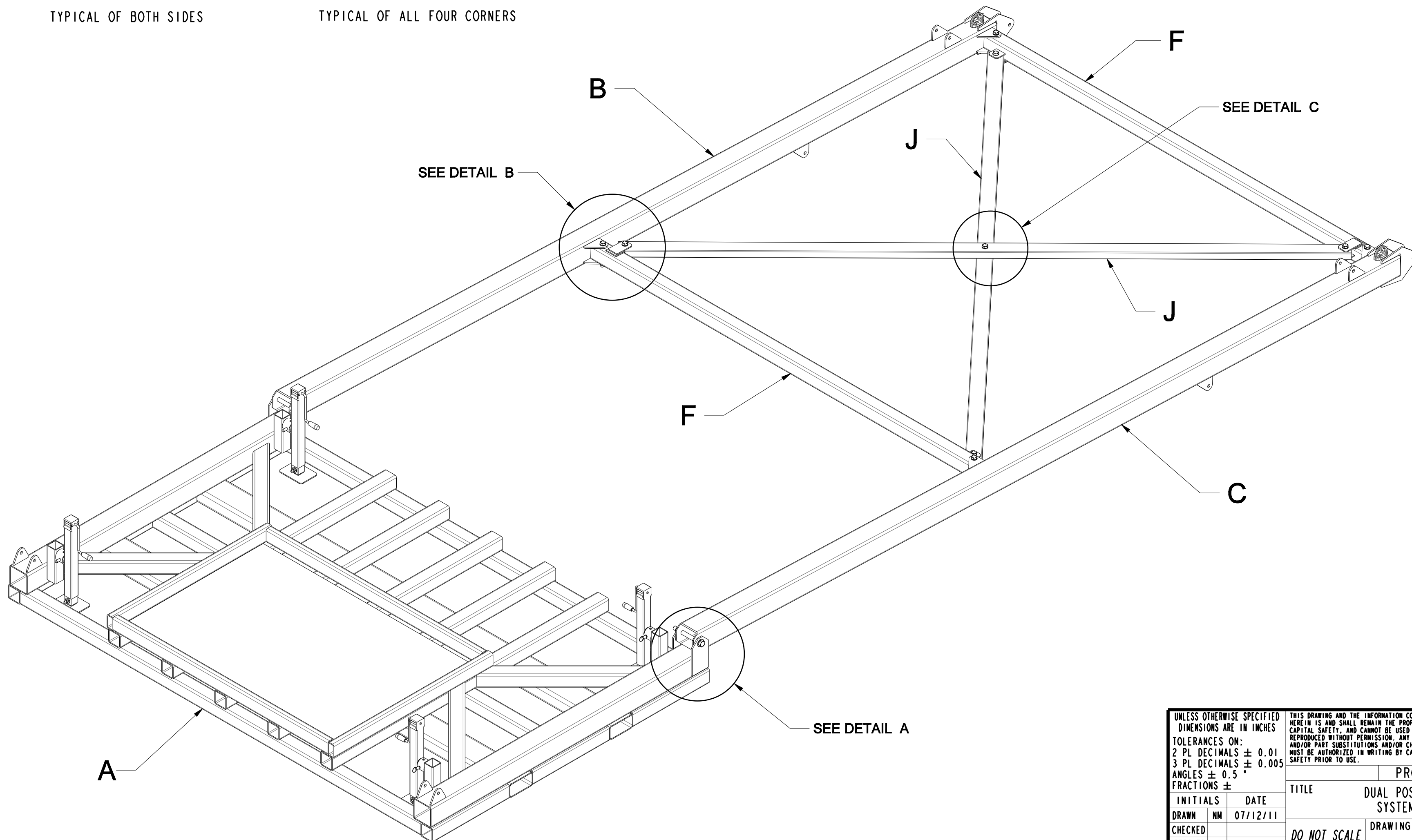


DETAIL B
SCALE 0.125

TYPICAL OF ALL FOUR CORNERS



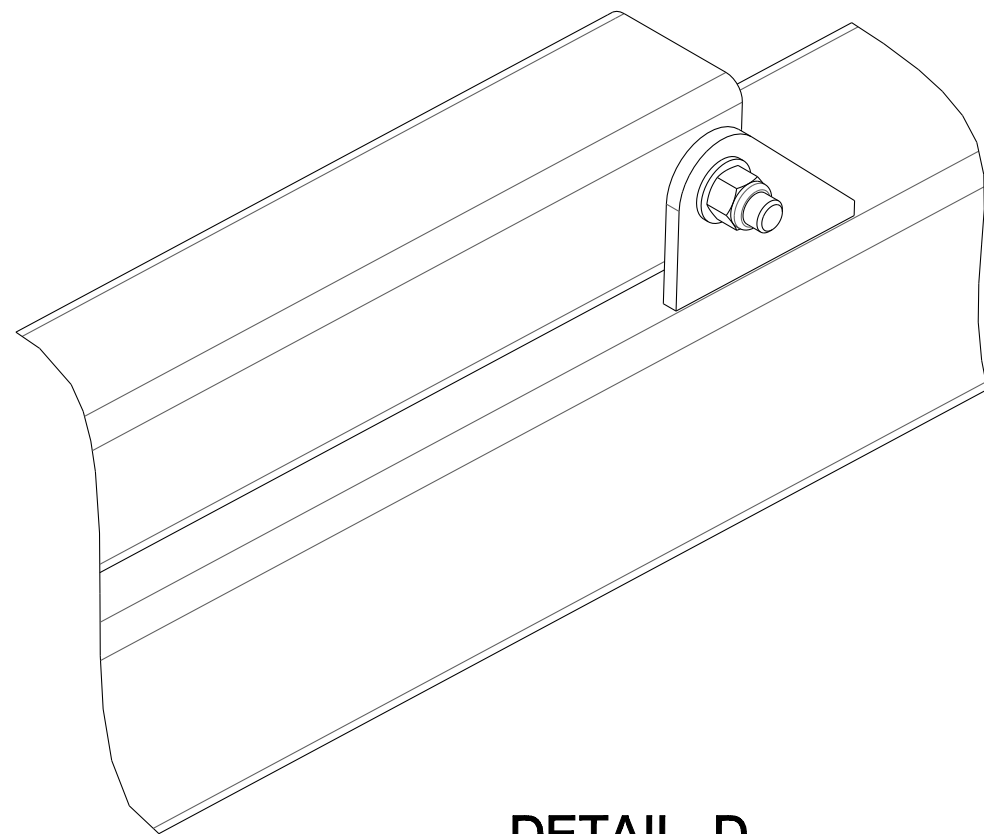
DETAIL C
SCALE 0.125



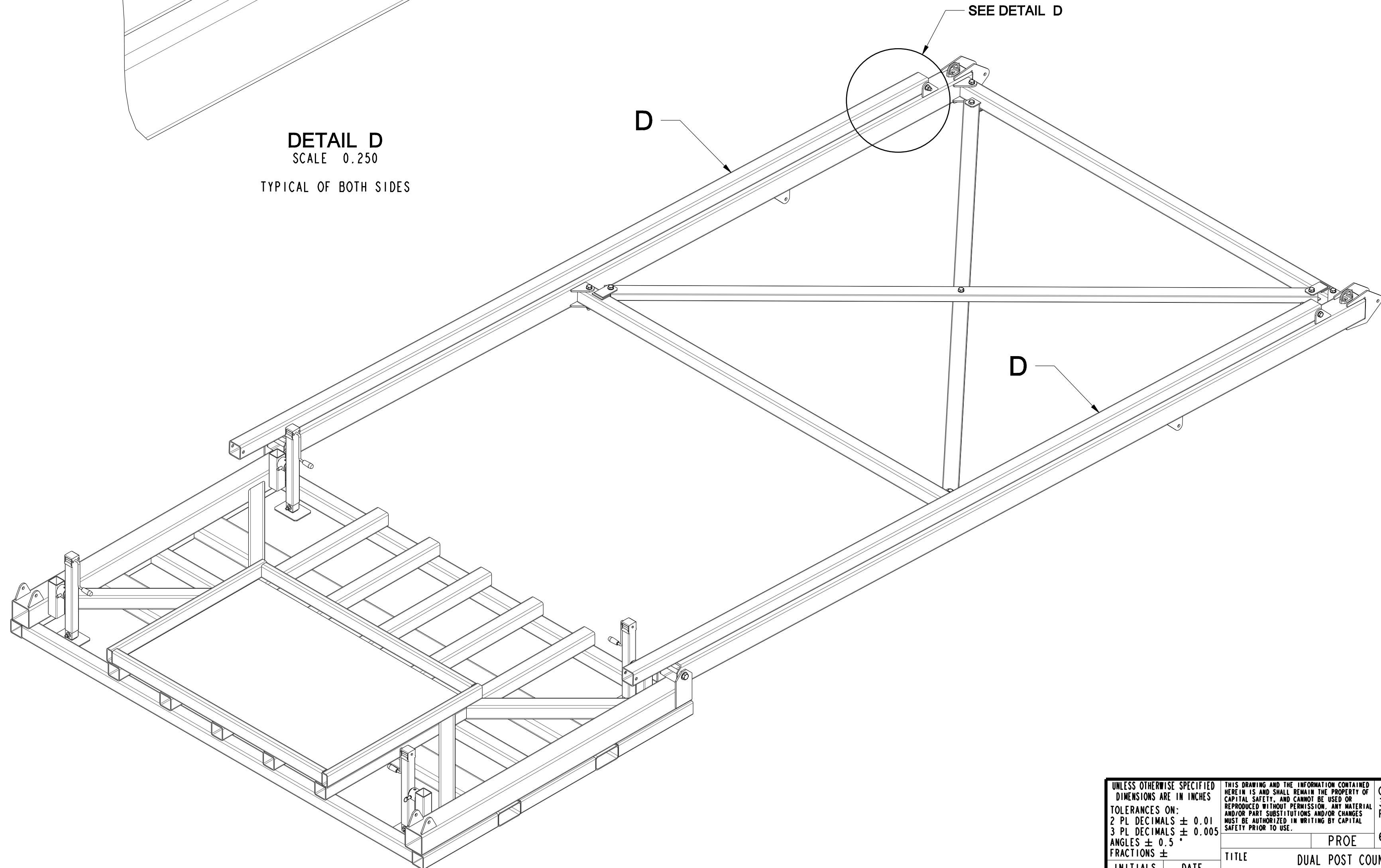
UNLESS OTHERWISE SPECIFIED DIMENSIONS ARE IN INCHES		THIS DRAWING AND THE INFORMATION CONTAINED HEREIN IS AND SHALL REMAIN THE PROPERTY OF CAPITAL SAFETY, AND CANNOT BE USED OR REPRODUCED WITHOUT PERMISSION. ANY MATERIAL AND/OR PART SUBSTITUTIONS AND/OR CHANGES MUST BE AUTHORIZED IN WRITING BY CAPITAL SAFETY PRIOR TO USE.		Capital Safety 3833 SALA Way RED WING, MN 55066-5005 651-388-8282 www.capitalsafety.com	capital SAFETY
TOLERANCES ON: 2 PL DECIMALS ± 0.01 3 PL DECIMALS ± 0.005 ANGLES ± 0.5° FRACTIONS ±		PROE		TITLE DUAL POST COUNTERWEIGHTED RAIL SYSTEM ASSEMBLY INSTRUCTION	
INITIALS	DATE	DRAWING NUMBER		REVISION	
DRAWN	NM 07/12/11	5903234		A	
CHECKED		DRAWING NUMBER		REVISION	
APPROVED		5903234		A	
SHEET 2 OF 8		DO NOT SCALE DRAWING			

STEP 3: ASSEMBLE REAR GUSSET TUBES

1) CONNECT THE REAR GUSSET TUBES (D) TO THE UPRIGHT ASSEMBLIES (B & C). FASTEN USING 3/4" HARDWARE (SEE DETAIL D).



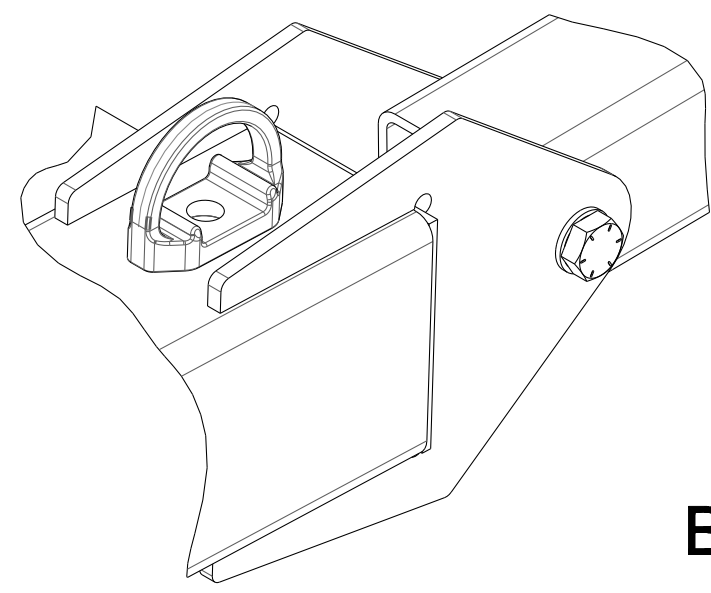
DETAIL D
SCALE 0.250
TYPICAL OF BOTH SIDES



UNLESS OTHERWISE SPECIFIED DIMENSIONS ARE IN INCHES		THIS DRAWING AND THE INFORMATION CONTAINED HEREIN IS AND SHALL REMAIN THE PROPERTY OF CAPITAL SAFETY, AND CANNOT BE USED OR REPRODUCED WITHOUT PERMISSION. ANY MATERIAL AND/OR PART SUBSTITUTIONS AND/OR CHANGES MUST BE AUTHORIZED IN WRITING BY CAPITAL SAFETY PRIOR TO USE.		Capital Safety 3833 SALA Way RED WING, MN 55066-5005 651-388-8282 www.capitalsafety.com		
TOLERANCES ON:		PROE		TITLE		
2 PL DECIMALS ± 0.01				DUAL POST COUNTERWEIGHTED RAIL		
3 PL DECIMALS ± 0.005				SYSTEM ASSEMBLY INSTRUCTION		
ANGLES ± 0.5°				DRAWING NUMBER		REVISION
FRACTIONS ±				5903234		A
INITIALS	DATE			DO NOT SCALE DRAWING		
DRAWN	NM 07/12/11					
CHECKED						
APPROVED						
SHEET 3 OF 8						

STEP 4: ASSEMBLE FRONT GUSSETS

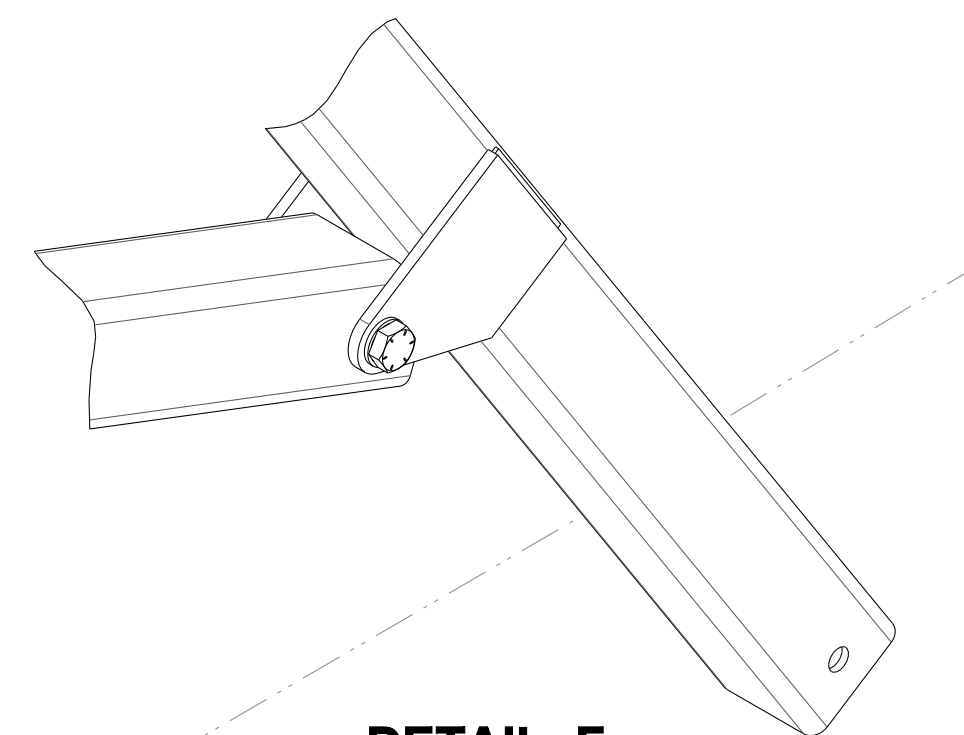
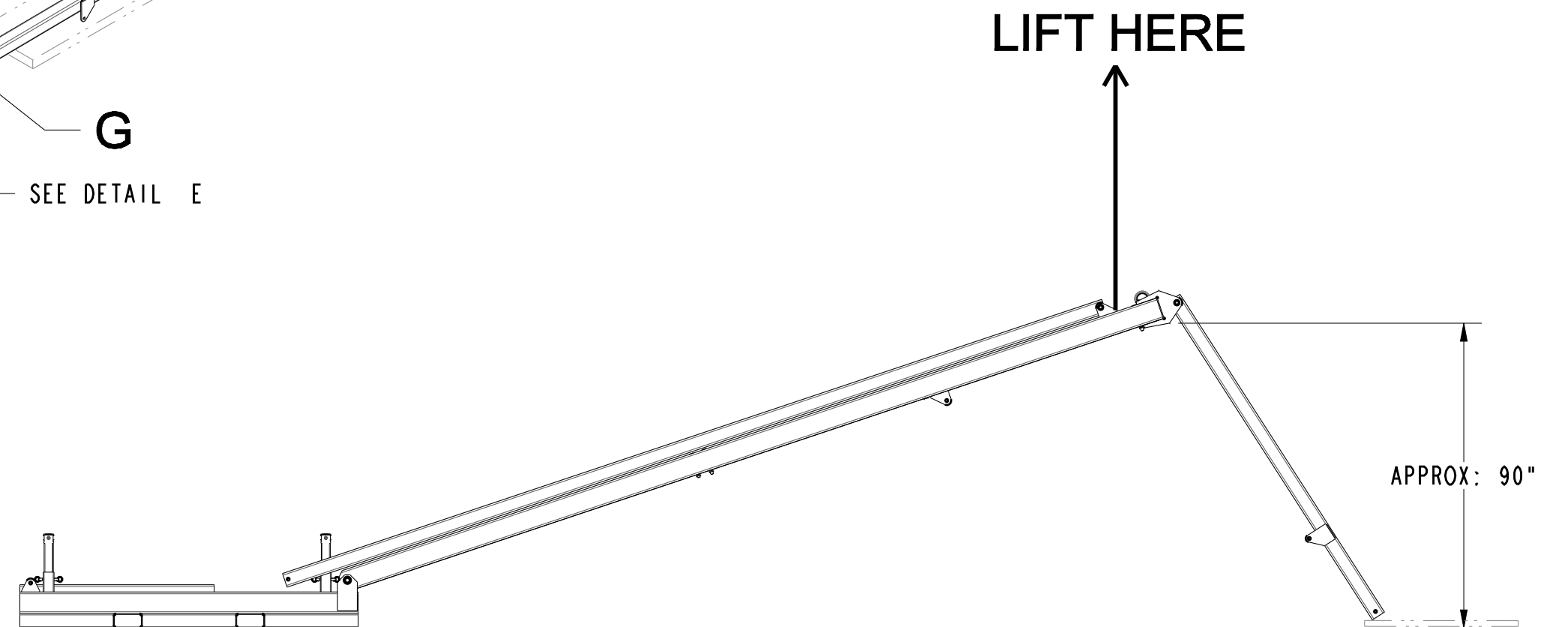
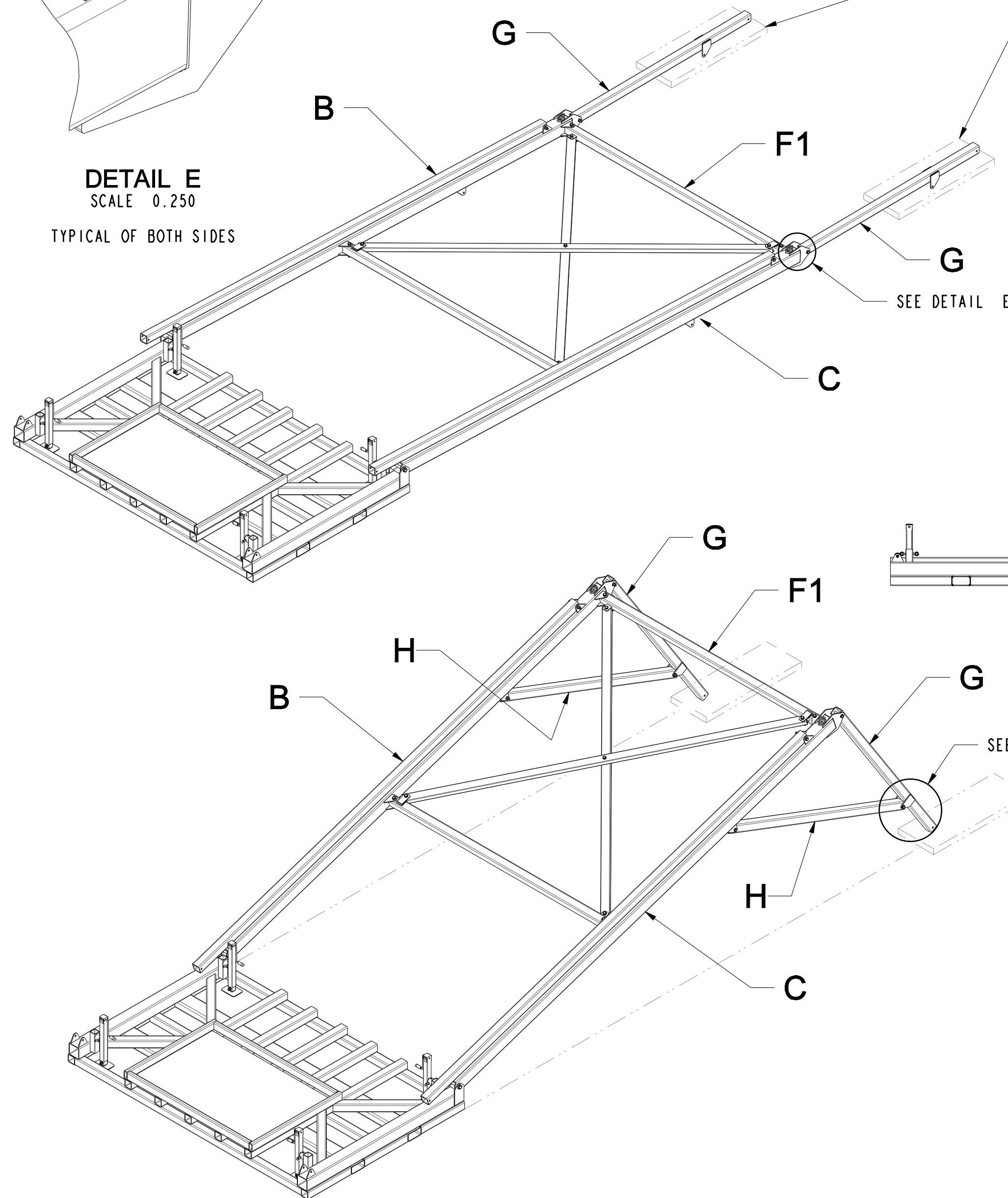
- 1) ATTACH THE RAIL SUPPORT ARMS (G) TO THE UPRIGHT ASSEMBLIES (B & C). CONNECT USING 3/4" HARDWARE (SEE DETAIL E).
- 2) PLACE CARDBOARD OR WOOD BELOW THE RAIL SUPPORT ARM ENDS IN PREPERATION FOR NEXT STEP.
- 3) USING A FORKLIFT OR CRANE, LIFT UP ON THE UPPER HORIZONTAL SUPPORT (F1) UNTIL IT IS APPROXIMATELY 90° OFF THE GROUND.
- 4) ATTACH THE FRONT GUSSET TUBES (H) TO THE UPRIGHT ASSEMBLIES (B & C) AND THE RAIL SUPPORT ASSEMBLIES (G). FASTEN USING 3/4" HARDWARE (SEE DETAIL F).
- 5) WITH FRONT GUSSETS SECURELY FASTENED, SET THE SYSTEM DOWN AND REMOVE LIFTING STRAPS.



DETAIL E

SCALE 0.250

TYPICAL OF BOTH SIDES



DETAIL F

SCALE 0.188

TYPICAL OF ALL FOUR LOCATIONS

UNLESS OTHERWISE SPECIFIED DIMENSIONS ARE IN INCHES		THIS DRAWING AND THE INFORMATION CONTAINED HEREIN IS AND SHALL REMAIN THE PROPERTY OF CAPITAL SAFETY, AND CANNOT BE USED OR REPRODUCED WITHOUT PERMISSION. ANY MATERIAL AND/OR PART SUBSTITUTIONS AND/OR CHANGES MUST BE AUTHORIZED IN WRITING BY CAPITAL SAFETY PRIOR TO USE.		Capital Safety 3833 SALA Way RED WING, MN 55066-5005 651-388-8282 www.capitalsafety.com	
TOLERANCES ON:		PROE		TITLE	
2 PL DECIMALS ± 0.01		INITIALS		DATE	
3 PL DECIMALS ± 0.005		DRAWN		07/12/11	
ANGLES ± 0.5°		CHECKED		DRAWING NUMBER	
FRACTIONS ±		APPROVED		5903234	
		SHEET 4 OF 8		REVISION	
		DO NOT SCALE DRAWING		A	

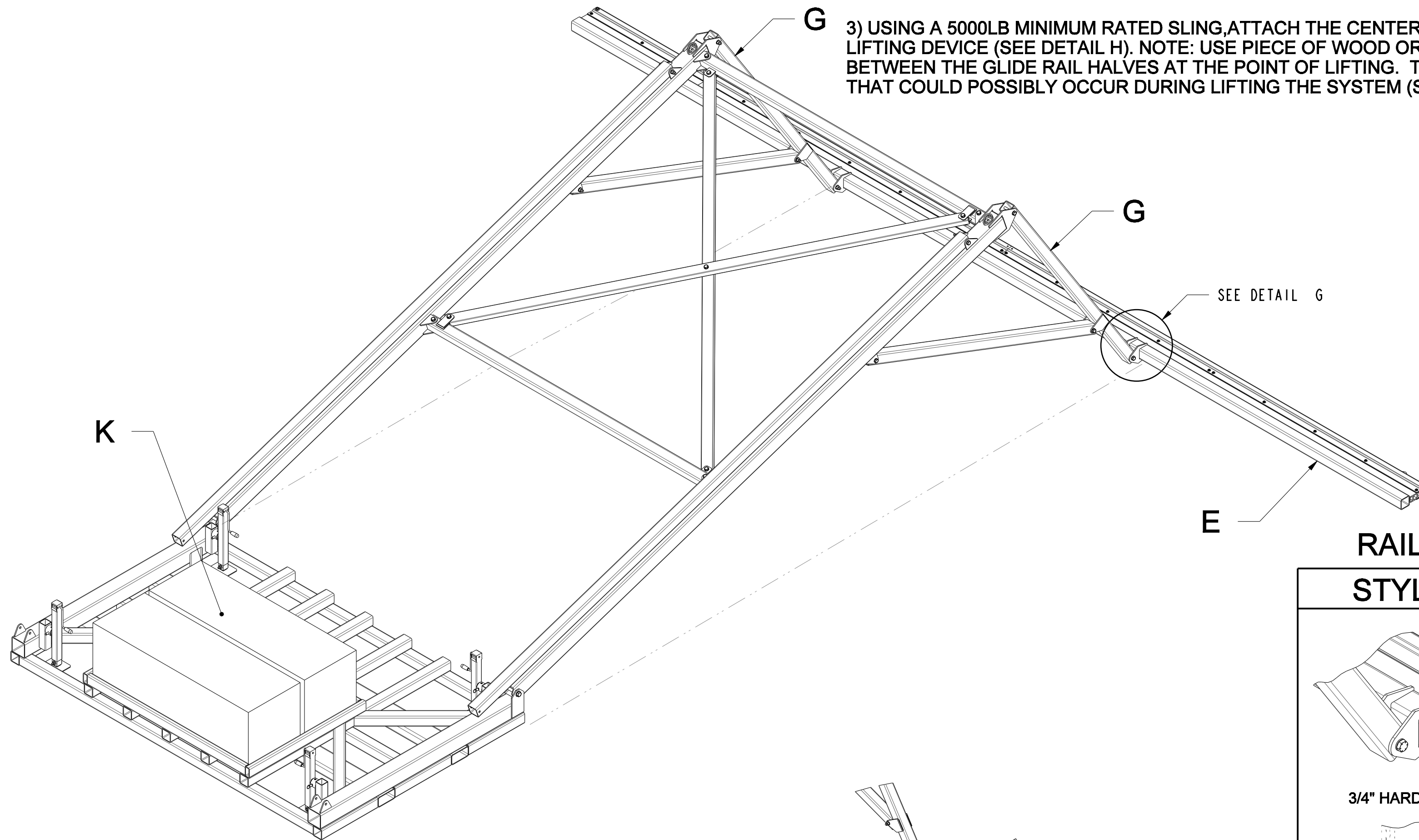
STEP 5: ATTACH GLIDE RAIL ASSEMBLY & COUNTERWEIGHT

1) ATTACH THE GLIDE RAIL ASSEMBLY (E) TO THE RAIL SUPPORT ARMS (G). FASTEN USING HARDWARE SPECIFIED PER MTG STYLE (SEE DETAIL G).

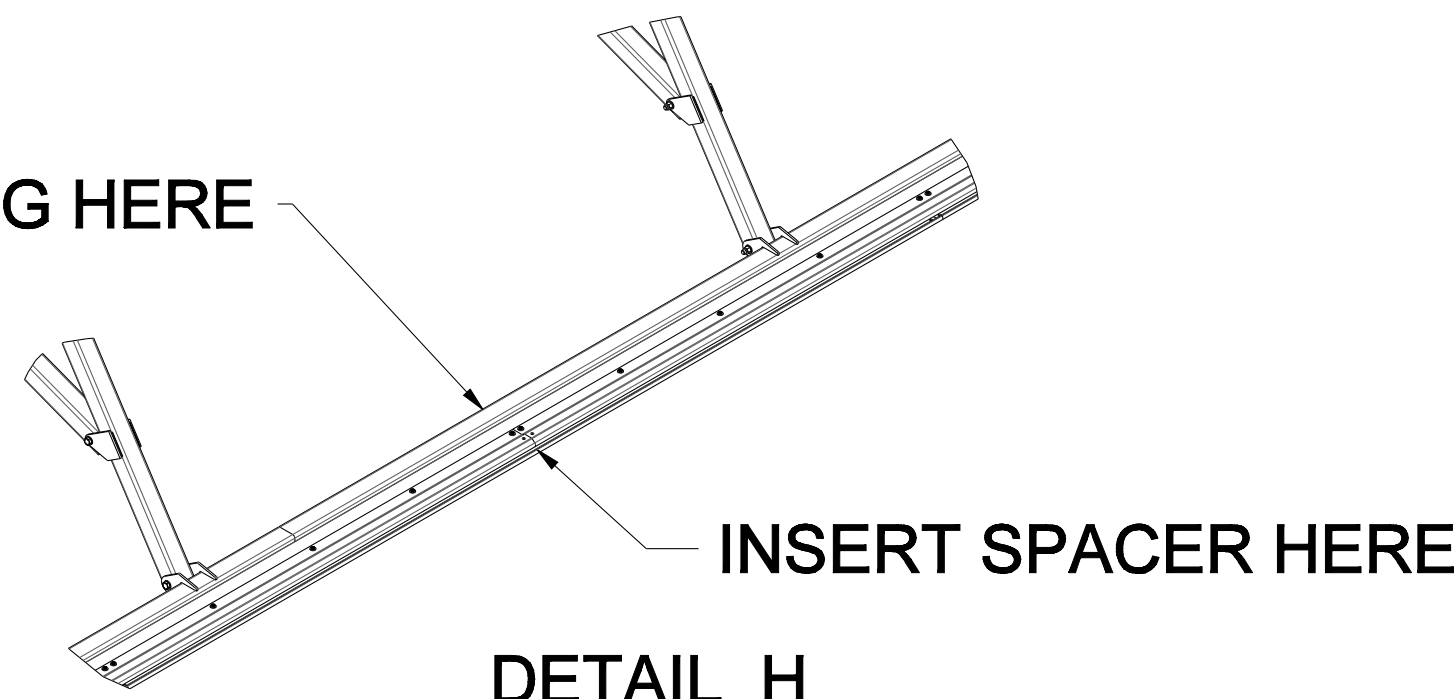
2) USING A FORKLIFT OR CRANE, PLACE THE COUNTERWEIGHT BLOCK OR BLOCKS (K) INTO THE TRAY.

IMPORTANT: ENSURE THE CORRECT AMMOUNT OF COUNTERWEIGHT IS BEING ADDED. REFER TO MANUFACTURERS INSTRUCTIONS AND/OR LABELS. IF YOU HAVE ANY QUESTIONS REGARDING THIS EQUIPMENT PLEASE CALL CAPTIAL SAFETY.

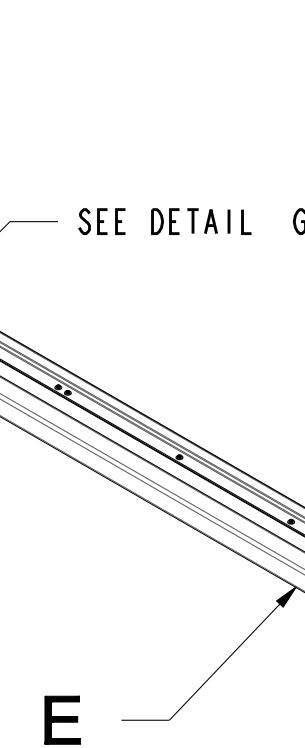
3) USING A 5000LB MINIMUM RATED SLING, ATTACH THE CENTER OF THE RAIL ASSEMBLY TO THE LIFTING DEVICE (SEE DETAIL H). NOTE: USE PIECE OF WOOD OR OTHER HARD OBJECT TO PLACE BETWEEN THE GLIDE RAIL HALVES AT THE POINT OF LIFTING. THIS WILL PREVENT ANY DAMAGE THAT COULD POSSIBLY OCCUR DURING LIFTING THE SYSTEM (SEE DETAIL H).



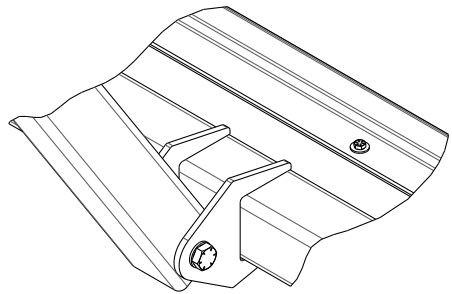
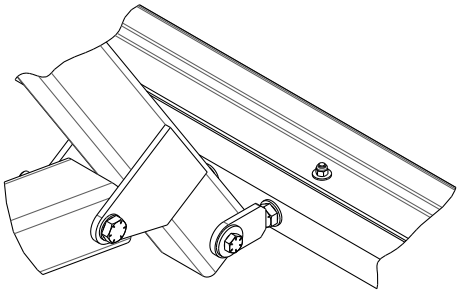
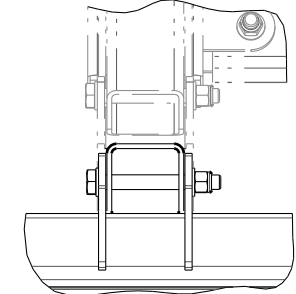
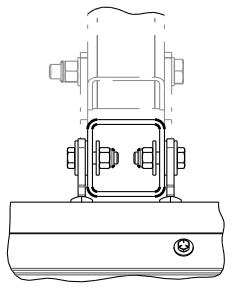
WRAP SLING HERE




DETAIL H



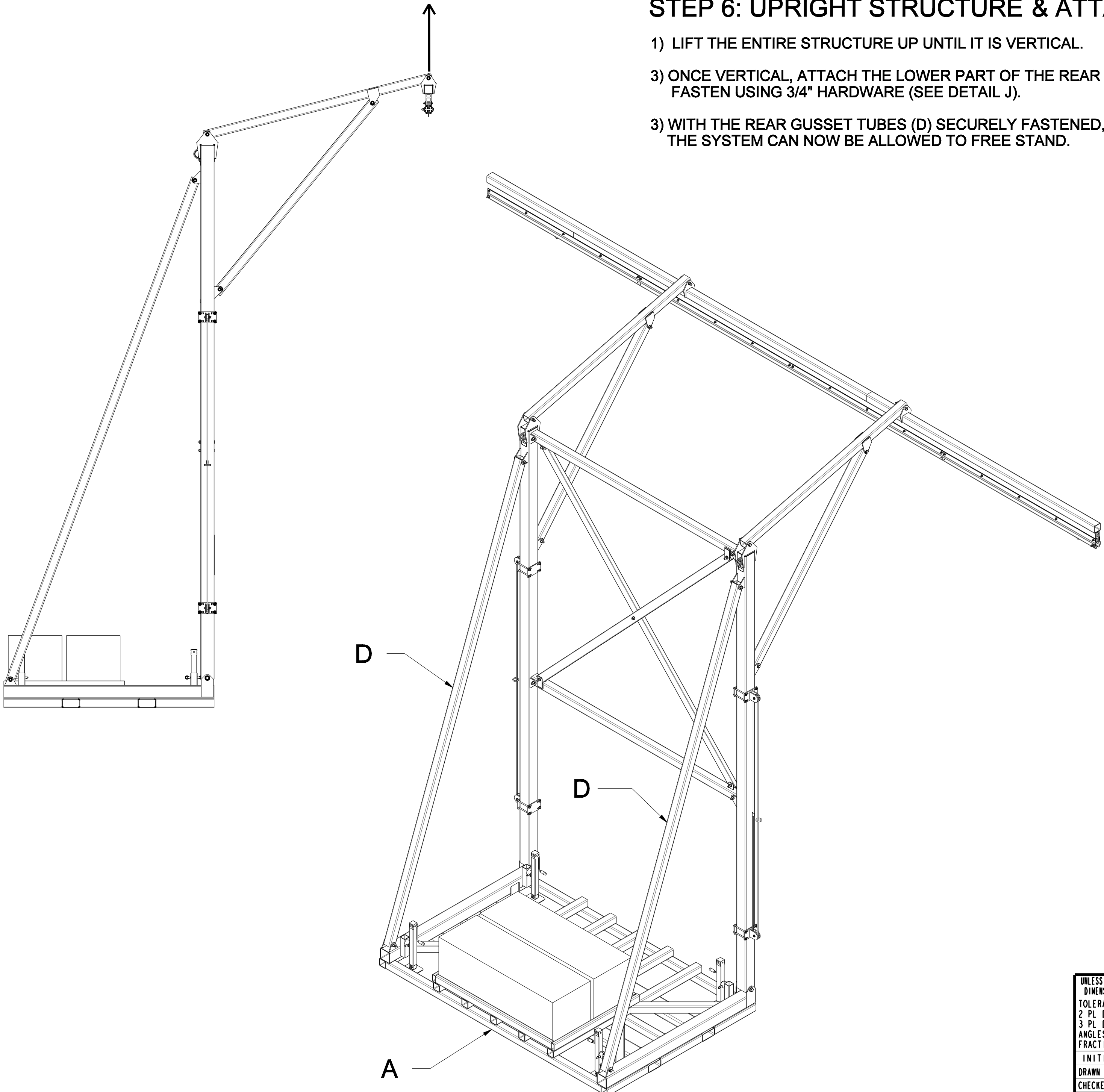
DETAIL G
RAIL MOUNTING STYLES

STYLE A	STYLE B
	
3/4" HARDWARE	5/8" HARDWARE
	

UNLESS OTHERWISE SPECIFIED DIMENSIONS ARE IN INCHES	THIS DRAWING AND THE INFORMATION CONTAINED HEREIN IS AND SHALL REMAIN THE PROPERTY OF CAPITAL SAFETY, AND CANNOT BE USED OR REPRODUCED WITHOUT PERMISSION. ANY MATERIAL AND/OR PART SUBSTITUTIONS AND/OR CHANGES MUST BE AUTHORIZED IN WRITING BY CAPITAL SAFETY PRIOR TO USE.	Capital Safety 3833 SALA Way RED WING, MN 55066-5005 651-388-8282 www.capitalsafety.com	
TOLERANCES ON: 2 PL DECIMALS ± 0.01 3 PL DECIMALS ± 0.005 ANGLES ± 0.5° FRACTIONS ±	PROE	TITLE DUAL POST COUNTERWEIGHTED RAIL SYSTEM ASSEMBLY INSTRUCTION	
INITIALS	DATE	DO NOT SCALE DRAWING	REVISION
DRAWN NM	07/12/11	DRAWING NUMBER	5903234
CHECKED			A
APPROVED			
SHEET 5 OF 8			

STEP 6: UPRIGHT STRUCTURE & ATTACH REAR GUSSET TUBES

- 1) LIFT THE ENTIRE STRUCTURE UP UNTIL IT IS VERTICAL.
- 3) ONCE VERTICAL, ATTACH THE LOWER PART OF THE REAR GUSSET TUBE (D) TO THE BASE ASSEMBLY (A). FASTEN USING 3/4" HARDWARE (SEE DETAIL J).
- 3) WITH THE REAR GUSSET TUBES (D) SECURELY FASTENED, REMOVE SLING AND SPACER FROM RAIL THE SYSTEM CAN NOW BE ALLOWED TO FREE STAND.



UNLESS OTHERWISE SPECIFIED DIMENSIONS ARE IN INCHES		THIS DRAWING AND THE INFORMATION CONTAINED HEREIN IS AND SHALL REMAIN THE PROPERTY OF CAPITAL SAFETY, AND CANNOT BE USED OR REPRODUCED WITHOUT PERMISSION. ANY MATERIAL AND/OR PART SUBSTITUTIONS AND/OR CHANGES MUST BE AUTHORIZED IN WRITING BY CAPITAL SAFETY PRIOR TO USE.		Capital Safety 3833 SALA Way RED WING, MN 55066-5005 651-388-8282 www.capitalsafety.com	
TOLERANCES ON:		PROE		capital SAFETY	
2 PL DECIMALS ± 0.01		TITLE		DUAL POST COUNTERWEIGHTED RAIL SYSTEM ASSEMBLY INSTRUCTION	
3 PL DECIMALS ± 0.005		DRAWN		DRAWING NUMBER	
ANGLES ± 0.5°		CHECKED		5903234	
FRACTIONS ±		APPROVED		REVISION	
INITIALS		DATE		A	
SHEET 6 OF 8		DO NOT SCALE DRAWING			

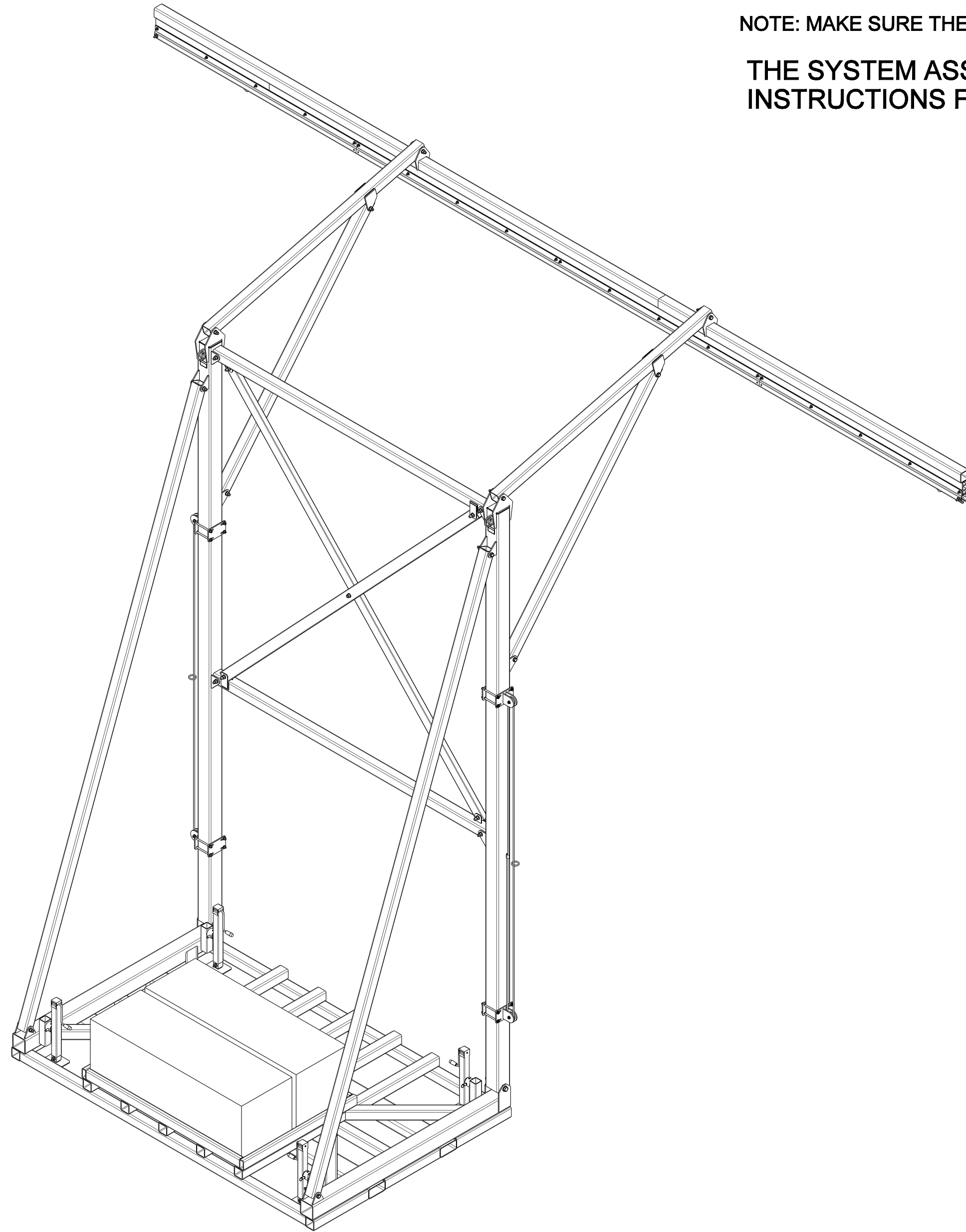
STEP 7: ATTACH ACCESSORIES

1) IF YOUR SYSTEM WAS NOT SUPPLIED WITH A TAGLINE RETRIEVAL SYSTEM SKIP THIS STEP.

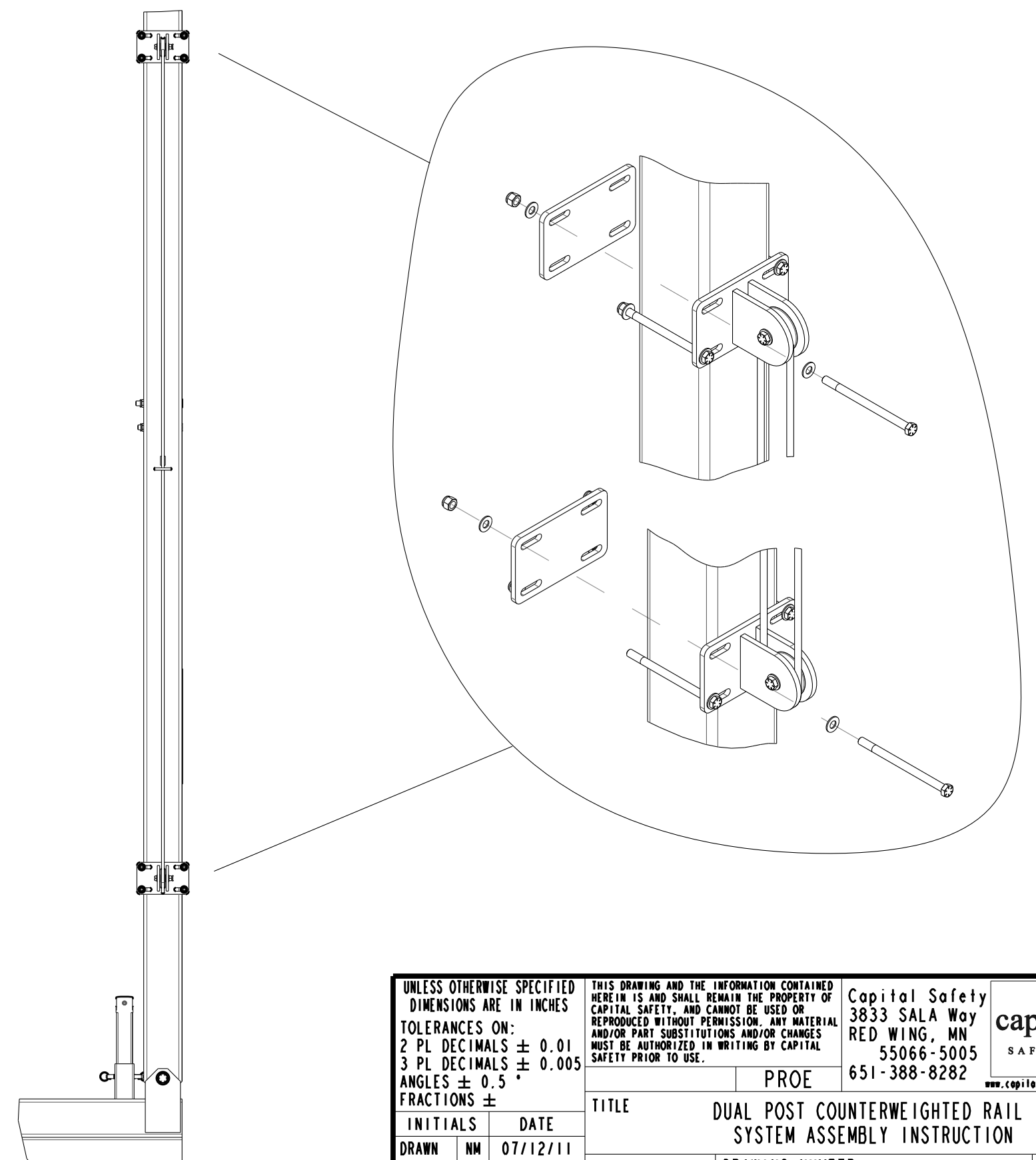
- 1A) PLACE THE UPPER AND LOWER PULLEY AT A DISTANCE TO WHERE THE LOOP LINE IS TIGHT.
- 1B) CLAMP THE PULLEY ASSEMBLIES AROUND THE UPRIGHTS USING 1/2" HARDWARE (SEE DETAIL K).

NOTE: MAKE SURE THE TAGLINE RETRIEVAL SYSTEMS ARE FACING OUTWARD AS SHOWN.

THE SYSTEM ASSEMBLY IS NOW COMPLETE. PLEASE REFER TO USER INSTRUCTIONS FOR SAFE SYSTEM USE AND MAINTINANCE.

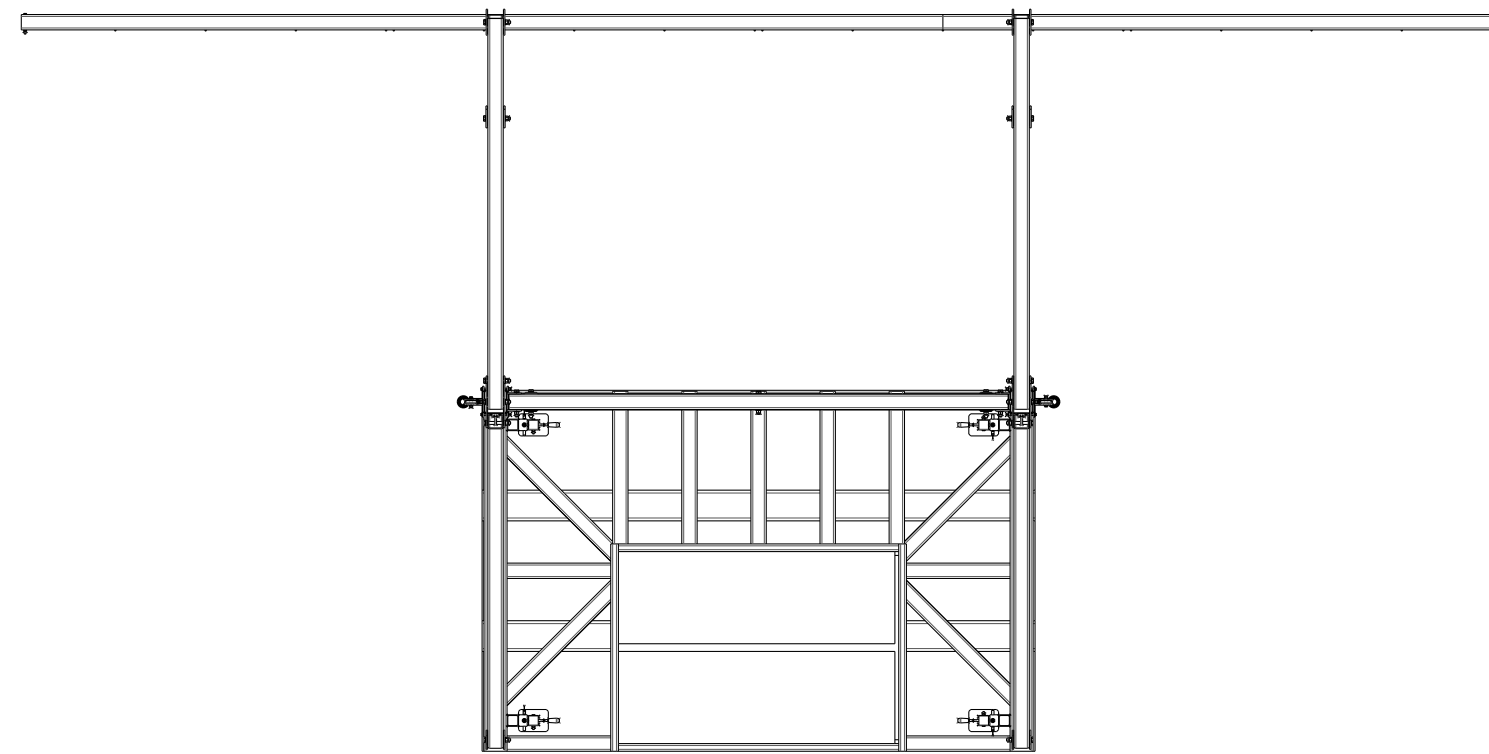
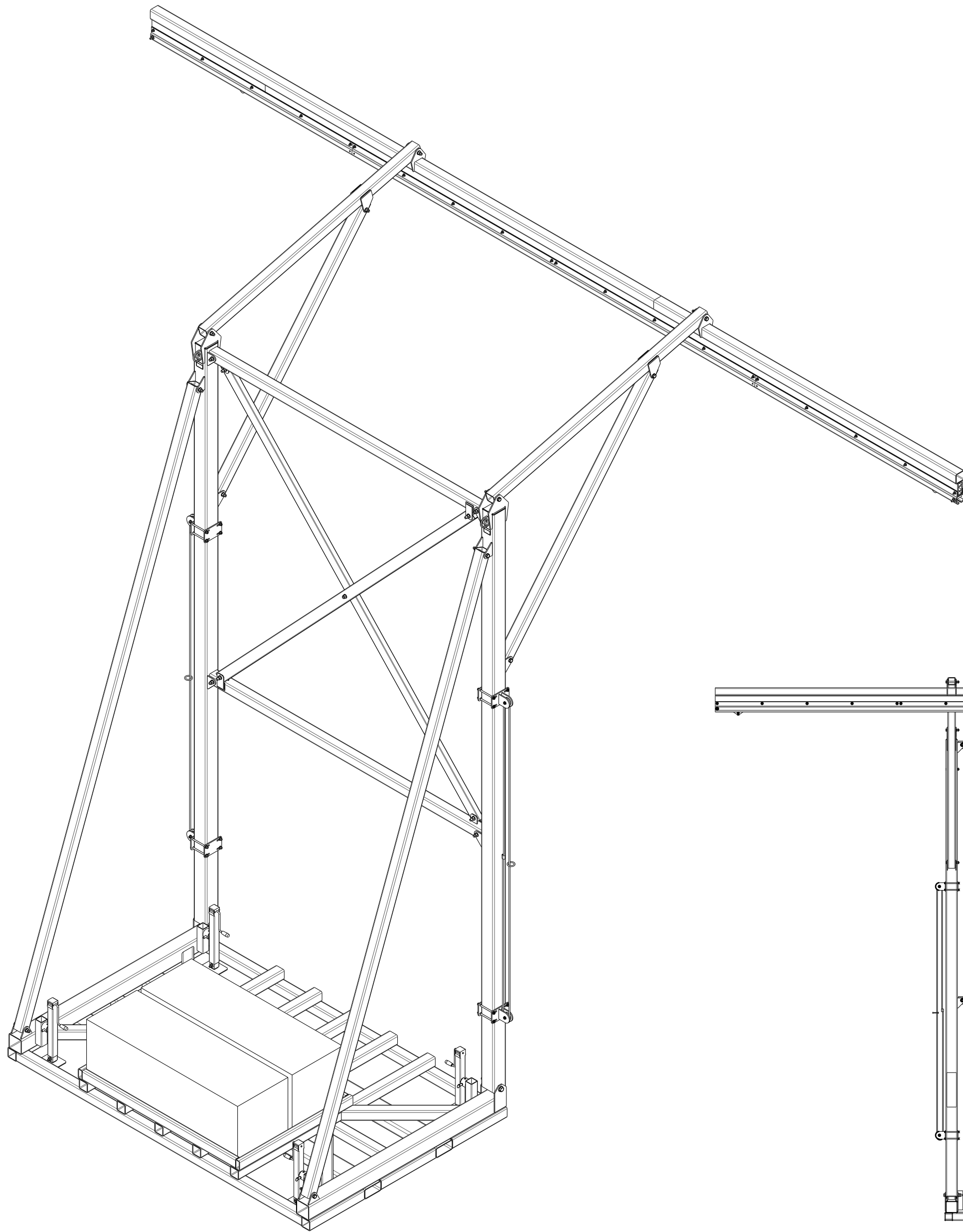


DETAIL K

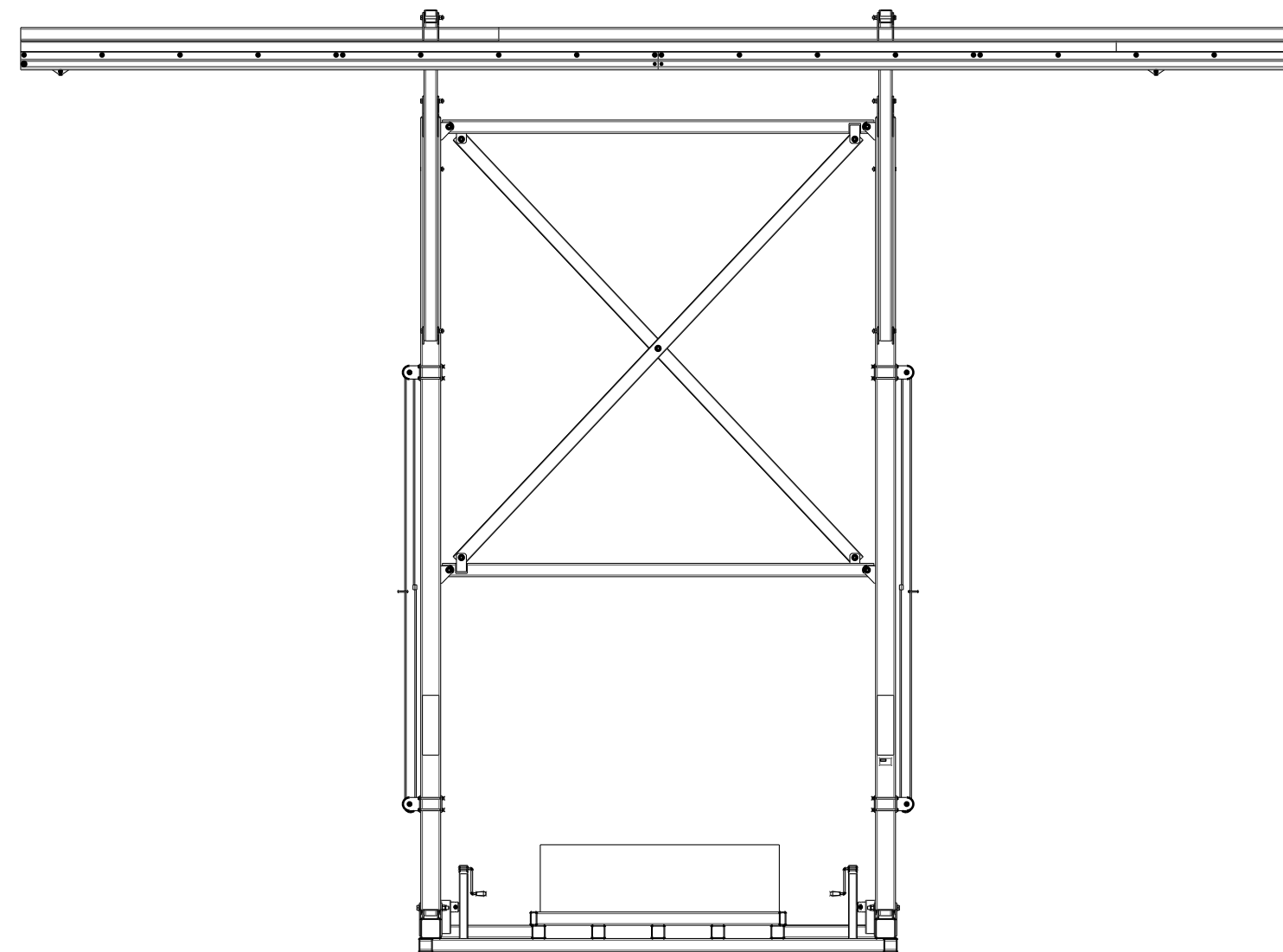


UNLESS OTHERWISE SPECIFIED DIMENSIONS ARE IN INCHES		THIS DRAWING AND THE INFORMATION CONTAINED HEREIN IS AND SHALL REMAIN THE PROPERTY OF CAPITAL SAFETY, AND CANNOT BE USED OR REPRODUCED WITHOUT PERMISSION. ANY MATERIAL AND/OR PART SUBSTITUTIONS AND/OR CHANGES MUST BE AUTHORIZED IN WRITING BY CAPITAL SAFETY PRIOR TO USE.		Capital Safety 3833 SALA Way RED WING, MN 55066-5005 651-388-8282 www.capitalsafety.com	
TOLERANCES ON:		PROE		capital SAFETY	
2 PL DECIMALS ± 0.01					
3 PL DECIMALS ± 0.005					
ANGLES ± 0.5°					
FRACTIONS ±					
INITIALS	DATE	TITLE			
DRAWN	NM 07/12/11	DUAL POST COUNTERWEIGHTED RAIL SYSTEM ASSEMBLY INSTRUCTION			
CHECKED		DRAWING NUMBER		REVISION	
APPROVED		5903234		A	
SHEET 7 OF 8		DO NOT SCALE DRAWING			

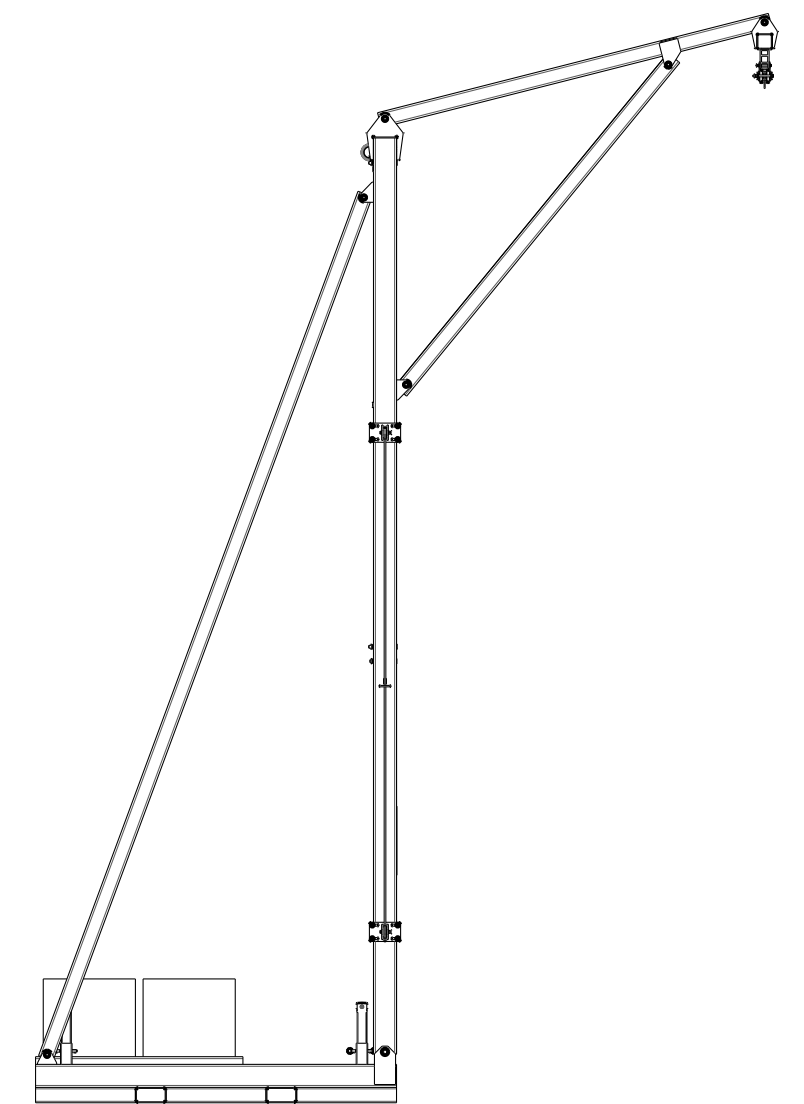
REFERENCE VIEWS



TOP



FRONT



SIDE

UNLESS OTHERWISE SPECIFIED DIMENSIONS ARE IN INCHES		THIS DRAWING AND THE INFORMATION CONTAINED HEREIN IS AND SHALL REMAIN THE PROPERTY OF CAPITAL SAFETY, AND CANNOT BE USED OR REPRODUCED WITHOUT PERMISSION. ANY MATERIAL AND/OR PART SUBSTITUTIONS AND/OR CHANGES MUST BE AUTHORIZED IN WRITING BY CAPITAL SAFETY PRIOR TO USE.		Capital Safety 3833 SALA Way RED WING, MN 55066-5005 651-388-8282 www.capitalsafety.com		capital SAFETY	
TOLERANCES ON:		SCALE 0.008		PROE		TITLE	
2 PL DECIMALS ± 0.01						DUAL POST COUNTERWEIGHTED RAIL	
3 PL DECIMALS ± 0.005						SYSTEM ASSEMBLY INSTRUCTION	
ANGLES ± 0.5°						DRAWING NUMBER	
FRACTIONS ±						5903234	
INITIALS	DATE					REVISION	
DRAWN	NM 07/12/11					A	
CHECKED		DO NOT SCALE DRAWING					
APPROVED							
SHEET 8 OF 8							