



# Power Plant in Thailand Uses 3M™ Liqui-Cel™ Membrane Contactors to Remove CO<sub>2</sub> from Water

A major power plant in Thailand is using 3M™ Liqui-Cel™ Membrane Contactors to remove carbon dioxide from a DI water system. The system is an expansion project and will be used to feed a high pressure boiler. Liqui-Cel membrane contactors are being used to lower the CO<sub>2</sub> inlet into an Ionpure Electrodeionization (EDI) system. Carbon dioxide adds an ionic load to the EDI system, which can

reduce the performance of the system. Manufacturers of the EDI equipment suggest lowering the inlet CO<sub>2</sub> to reduce the load on the equipment and improve the water quality.

The system was designed, built and installed by Liquid Purification Engineering International Co., Ltd. in Bangkok Thailand. LPE designed the DI water system as an all-membrane-based system that does not require the use of ion exchange resin or chemicals. The system uses a double pass Reverse Osmosis (RO) membrane, a Liqui-Cel membrane contactor and Ionpure EDI technology. The system produces water with a resistivity >16.0 MΩ-cm. (See water quality and flow diagram.)

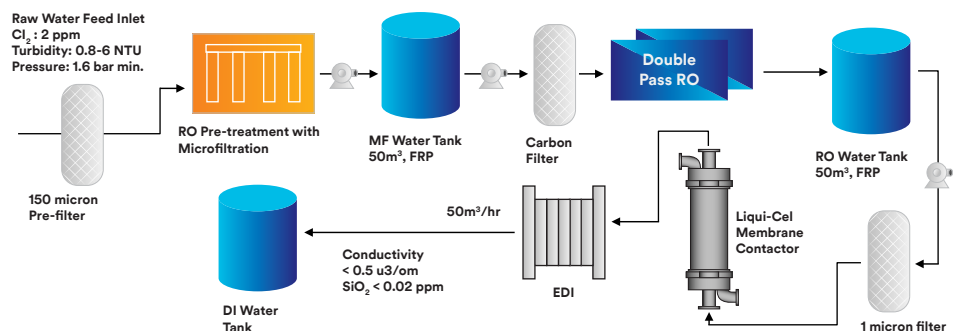
The Liqui-Cel membrane contactor system consists of one 14-inch membrane contactor that operates in combination mode using vacuum and air sweep.

Liqui-Cel membrane contactors utilize a hydrophobic polypropylene membrane to remove dissolved gasses from water. Water flows on one side of the membrane and a vacuum or strip gas is passed on the other side of the membrane. In this system air is drawn into the membrane under vacuum. The high flow rate of air sweep under vacuum creates a driving force to move the dissolved CO<sub>2</sub> from the water into the gas phase.

Historically, forced draft deaerators have been used to remove CO<sub>2</sub> from water. This type of deaerator uses ambient air that is fed into the tower with a blower, putting the air in direct contact with the water. This results in air-to-water contamination from any contaminants that are present in the air. For this reason, using a forced draft deaerator downstream of an RO membrane system is not recommended.

Water Quality Influent Analysis Water Source	Clarified Surface Water
Turbidity, NTU	0.8-5
pH	6.5-8
Conductivity, Micro siemen-cm	400
TDS, mg/l	280
M- Alkalinity, mg/l as CaCO <sub>3</sub>	100
Total Hardness, mg/l as CaCO <sub>3</sub>	120
Calcium Hardness, mg/l as CaCO <sub>3</sub>	75
Chloride, mg/l as Cl-	45
Iron, mg/l as SO <sub>4</sub>	0.01
Sulfate, mg/l as SO <sub>4</sub>	26
Phosphate, mg/l as PO <sub>4</sub>	0.03
Silica, mg/l as SiO <sub>2</sub>	15
Effluent Quality, RO feed	
Turbidity, NTU	<0.5
SDI	<3
Effluent Quality, DI. water	
Resistivity, MΩ-cm	>16.0
Silica, mg/l as SiO <sub>2</sub>	<0.02

Figure 1. Schematic Diagram of Water Treatment System (RO-LMC-EDI)

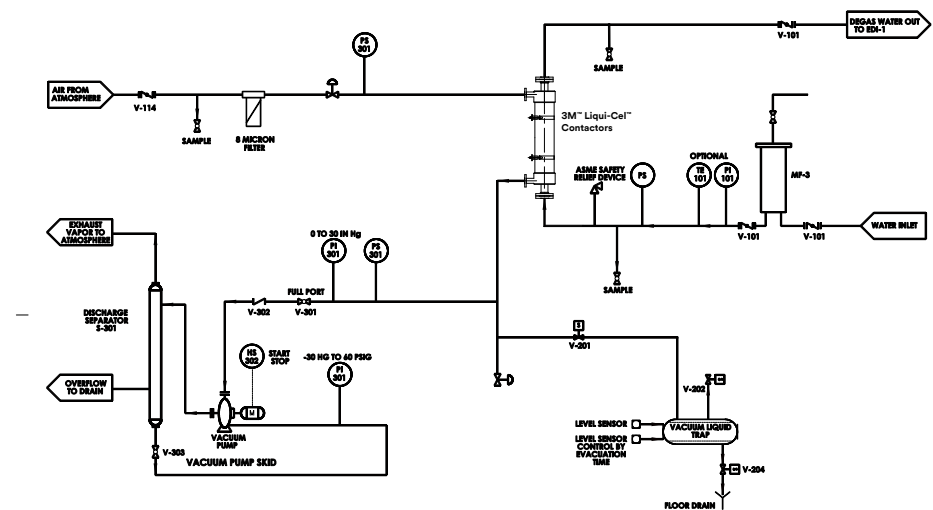


## Technical Brief | Power Plant in Thailand Uses 3M™ Liqui-Cel™ Membrane Contactors to Remove CO<sub>2</sub> from Water

3M™ Liqui-Cel Membrane Contactors, however, are well suited to remove dissolved carbon dioxide and other dissolved gasses along side of an RO membrane system because the membrane has 0.03 μm pores that prevent air stream contamination from coming into contact with the RO water.

Liqui-Cel membrane contactors are mechanical devices that remove the dissolved CO<sub>2</sub> that will ionize in water and be present in both gaseous and ionic forms. The amount of CO<sub>2</sub> gas present in the water depends on the pH of the water. The lower the pH, the greater the amount of CO<sub>2</sub> present in the water. Due to the natural decrease of pH across the RO membrane system, the pH inlet to the membrane contactor is below 6. This favors the formation of CO<sub>2</sub> gas and allows the membrane contactor to efficiently remove CO<sub>2</sub> gas from the water.

The power plant is very pleased with the membrane based DI water system. It requires little maintenance and exceeds the performance specifications for the system. In addition, by incorporating Liqui-Cel membrane contactors into the system to remove CO<sub>2</sub>, the amount of chemicals used in the plant is reduced. By mechanically removing



the CO<sub>2</sub>, the end user did not need to adjust the pH up to facilitate removal by the RO membrane system or use ion exchange beds upstream of the EDI to lower the CO<sub>2</sub> load on the EDI.

Liqui-Cel membrane contactors are used in thousands of systems throughout the world to remove dissolved gasses from water. This design is one example of how membrane contactors can be used in a water system.

For additional information, please contact your 3M representative or visit [3M.com/Liqui-Cel](http://3M.com/Liqui-Cel).



**Technical Information:** The technical information, recommendations and other statements contained in this document are based upon tests or experience that 3M believes are reliable, but the accuracy or completeness of such information is not guaranteed.

**Product Use:** Many factors beyond 3M's control and uniquely within user's knowledge and control can affect the use and performance of a 3M product in a particular application. Given the variety of factors that can affect the use and performance of a 3M product, user is solely responsible for evaluating the 3M product and determining whether it is fit for a particular purpose and suitable for user's method of application.

**Warranty, Limited Remedy, and Disclaimer:** Unless an additional warranty is specifically stated on the applicable 3M product packaging or product literature, 3M warrants that each 3M product meets the applicable 3M product specification at the time 3M ships the product. 3M MAKES NO OTHER WARRANTIES OR CONDITIONS, EXPRESS OR IMPLIED, INCLUDING, BUT NOT LIMITED TO, ANY IMPLIED WARRANTY OR CONDITION OF MERCHANTABILITY OR FITNESS FOR A PARTICULAR PURPOSE OR ANY IMPLIED WARRANTY OR CONDITION ARISING OUT OF A COURSE OF DEALING, CUSTOM OR USAGE OF TRADE. If the 3M product does not conform to this warranty, then the sole and exclusive remedy is, at 3M's option, replacement of the 3M product or refund of the purchase price.

**Limitation of Liability:** Except where prohibited by law, 3M will not be liable for any loss or damage arising from the 3M product, whether direct, indirect, special, incidental or consequential, regardless of the legal theory asserted, including warranty, contract, negligence or strict liability.

3M and Liqui-Cel are trademarks of 3M Company. All other trademarks are the property of their respective owners. © 2017 3M Company. All rights reserved.



Separation and Purification  
Sciences Division  
13840 South Lakes Drive  
Charlotte, North Carolina  
28273 USA  
Phone: +1 980 859 5400

3M Deutschland GmbH  
Separation and Purification  
Sciences Division  
Öhder Straße 28  
42289 Wuppertal Germany  
Phone: +49 202 6099 - 0  
Fax: +49 202 6099 - 241



ISO 9001

LC-1069  
Rev. 01/2017

[3M.com/Liqui-Cel](http://3M.com/Liqui-Cel)