

IMPORTANT
Failure to follow instructions
carefully may cause damage.
Save instructions or
visit command.com



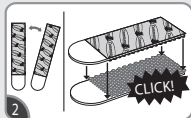
17205
command.com

APPLY

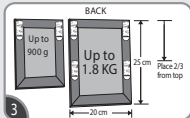


1 Clean wall with rubbing alcohol*.
Do not use household cleaners.

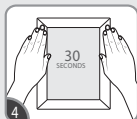
*Isopropyl rubbing alcohol may be found in most pharmacies and/or hardware stores.



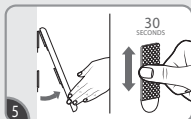
2 Separate strips. Press two strips together until they click. Each pair of strips holds 450 g.



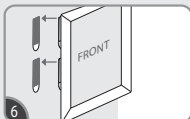
3 Remove one side of liners. Place each pair of strips as shown. Press firmly.



4 Remove remaining liners and press frame on wall. Press each side firmly for 30 sec.

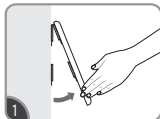


5 To ensure adhesive hold, grab bottom corners and peel frame from wall. Do not pull straight off. Press each strip firmly for 30 seconds.



6 Wait 1 HOUR to reattach frame. Line up frame with strips on wall and press until each pair of strips click.

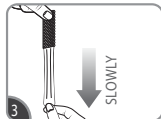
REMOVE



1 Grab bottom corners and peel frame from wall. Do not pull straight off.



2 Never pull the strip towards you!
Always pull straight down.



3 Stretch the strip slowly against the wall at least 15 cm to release.

▲ CAUTION:
Do not hang over beds or use on wallpaper. May not adhere well on vinyl surfaces.

Do not hang valuable or irreplaceable items or clocks.

For indoor use only. Apply to surfaces between 10 °C - 40 °C.

- Wait a minimum of 28 days after painting to apply.
- Remove all back-of-frame hanging attachment s / stands to ensure frame edges can be mounted fully flush with the wall.
- Do not apply strips to paper or soft surfaces on frame.

Strips made in Singapore.

3M and Command are trademarks of 3M.

© 3M 2016.

All rights reserved.

34-8717-3724-2
command.com

The following statements do not apply to products distributed in Australia and New Zealand. Consumers must rely on their statutory rights.

WARRANTY & LIABILITY:

This product will be free from defects in material and manufacture. Please read the instructions carefully. 3M will not be liable for any loss or damage caused by incorrect use, application or removal of the product.

If this product is found to be defective, your remedy shall be, at 3M's option, replacement of the product or refund of the purchase price. To the extent permitted by law, 3M will not be liable for any other loss or damage arising from the use of this product.

Dist. By:
3M, Construction and Home Improvement Markets Division

3M Australia Pty Limited
Bldg A, 1 Rivett Road
North Ryde, NSW 2113
PH: 1800 025 725

3M New Zealand Ltd
94 Apollo Drive, Rosedale,
Auckland 0632
PH: 0800 436 435

3M Technologies (S) Pte Ltd.
1 Yishun Avenue 7,
Singapore 768923
PH: (65) 6450-8888



Please dispose packaging thoughtfully.

