

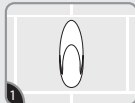
IMPORTANT

Failure to follow instructions carefully may cause damage. Save instructions or visit command.com



WET22
command.com

APPLY

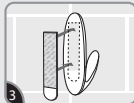


1
Select Location. If possible, choose a location where strips are not over grout lines. **IMPORTANT:** Allow space above hook for removal.



2
Clean & Dry Surface. Clean surface with isopropyl rubbing alcohol, * let dry. **DO NOT** use household cleaners to prep the surface.

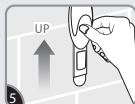
*Isopropyl rubbing alcohol may be found in most pharmacies and/or hardware stores.



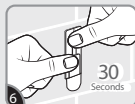
3
REMOVE RED liner. PRESS adhesive to mounting base of hook.



4
REMOVE BLACK liner. PRESS hook to surface for 10 seconds.



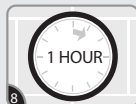
5
IMPORTANT: For maximum holding strength slide hook off.



6
Press base **FIRMLY** for 30 seconds.

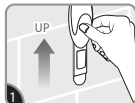


7
Slide hook on to mounting base.

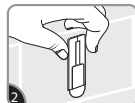


8
Wait **1 HOUR** before use.

REMOVE



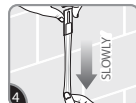
1
Slide hook up to remove from mounting base.



2
Hold base gently to prevent base from snapping fingers. **DO NOT** press base against wall.



3
NEVER pull strip towards you. Strip could break or damage surface if pulled outward.



4
STRETCH STRIP STRAIGHT DOWN ALONG WALL AT LEAST 38cm until base and strip release.

Visit command.com for the strip holding power for your product.

CAUTION: Do not hang over beds or use on wallpaper. May not adhere well to vinyl surfaces.

Do not hang valuable or irreplaceable items, clocks or framed pictures.

Use only one hook per item hung. For indoor use only. Apply to surfaces between 10°C - 40°C.

Wait a minimum of 28 days after painting to apply.

Not intended for picture hanging. Instead use Command™ Picture Hanging Strips, Sawtooth or Wire-Backed Hangers.

Strips made in Singapore.

3M and Command are trademarks of 3M.

© 3M 2016. All rights reserved.

34-8717-3929-7
command.com

The following statements do not apply to products distributed in Australia and New Zealand, consumers must rely on their statutory rights.

WARRANTY & LIABILITY: This product will be free from defects in material and manufacture. Please read the instructions carefully. 3M will not be liable for any loss or damage caused by incorrect use, application or removal of the product.

If this product is found to be defective, your remedy shall be, at 3M's option, replacement of the product or refund of the purchase price. To the extent permitted by law, 3M will not be liable for any other loss or damage arising from the use of this product.



Please dispose packaging thoughtfully

Dist. By:
3M, Construction and Home Improvement Markets Division
3M Australia Pty Limited
Bldg A, 1 Rivett Road, North Ryde, NSW 2113 PH: 1800 025 725
3M New Zealand Ltd
94 Apollo Drive, Rosedale, Auckland 0632 PH: 0800 436 435
3M Technologies (S) Pte Ltd.
1 Yishun Avenue 7,
Singapore 768923 PH: (65) 6450-8888

