

**IMPORTANT**  
Failure to follow instructions  
carefully may cause damage.  
Save instructions or  
visit [command.com](http://command.com)



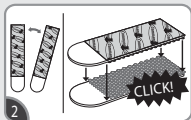
17201BLK  
[command.com](http://command.com)

## APPLY

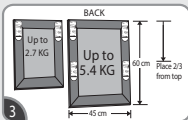


Clean wall with rubbing alcohol\*.  
Do not use household cleaners.

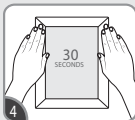
\*Isopropyl rubbing alcohol may be found in most pharmacies and/or hardware stores.



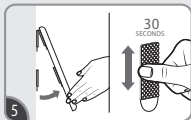
Separate strips. Press two strips together until  
they click. Each pair of strips holds 1.35 kg.



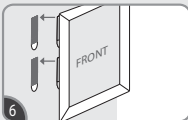
Remove one side of liners. Place each pair  
of strips as shown. Press firmly.



Remove remaining liners and  
press frame on wall. Press  
each side firmly for 30 sec.

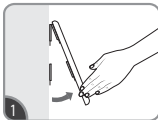


To ensure adhesive hold, grab bottom corners  
and peel frame from wall. Do not pull straight off.  
Press each strip firmly for 30 seconds.



Wait 1 HOUR to reattach frame. Line up  
frame with strips on wall and press until  
each pair of strips click.

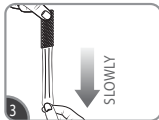
## REMOVE



Grab bottom corners and peel frame  
from wall. Do not pull straight off.



Never pull the strip towards you!  
Always pull straight down.



Stretch the strip slowly against the  
wall at least 30 cm to release.

### ▲ CAUTION:

Do not hang over beds or use on  
wallpaper. May not adhere well  
on vinyl surfaces.

Do not hang valuable or  
irreplaceable items or clocks.

For indoor use only. Apply to  
surfaces between 10 °C - 40 °C.

- Wait a minimum of 28 days  
after painting to apply.
- Remove all back-of-frame  
hanging attachment s / stands  
to ensure frame edges can be  
mounted fully flush with  
the wall.
- Do not apply strips to paper or  
soft surfaces on frame.

Strips made in Singapore.

3M and Command  
are trademarks of 3M.

© 3M 2016.

All rights reserved.

34-8717-3721-8  
[command.com](http://command.com)

The following statements do not apply to products distributed in  
Australia and New Zealand. Consumers must rely on their statutory  
rights.

### WARRANTY & LIABILITY:

This product will be free from defects in material and manufacture.  
Please read the instructions carefully. 3M will not be liable for any  
loss or damage caused by incorrect use, application or removal of  
the product.

If this product is found to be defective, your remedy shall be, at 3M's  
option, replacement of the product or refund of the purchase price.  
To the extent permitted by law, 3M will not be liable for any other loss  
or damage arising from the use of this product.

Dist. By:  
3M, Construction and Home  
Improvement Markets Division

3M Australia Pty Limited  
Bldg A, 1 Rivett Road  
North Ryde, NSW 2113  
PH: 1800 025 725

3M New Zealand Ltd  
94 Apollo Drive, Rosedale,  
Auckland 0632  
PH: 0800 436 435

3M Technologies (S) Pte Ltd.  
1 Yishun Avenue 7,  
Singapore 768923  
PH: (65) 6450-8888



Please dispose packaging thoughtfully.

