

IMPORTANT
Failure to follow instructions
carefully may cause damage.
Save instructions or
visit command.com

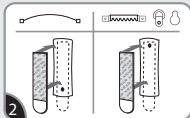


17047
command.com

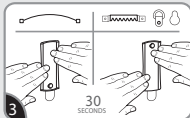
APPLY



1 Clean wall with rubbing alcohol*.
Do not use household cleaners.

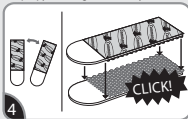


2 For wire back frames, position post at the
bottom. For sawtooth and other frames, position
post at the top. Remove red liner and press
adhesive to hanger.



3 Remove black liner. Press hanger firmly to
wall for 30 sec. Wait **1 HOUR** before hanging
frame.

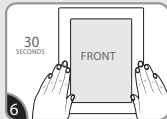
*Isopropyl rubbing alcohol may be found in most pharmacies and/or hardware stores.



4 When ready to hang the frame, separate the
stabilizer strips. Press two strips together
until they click.

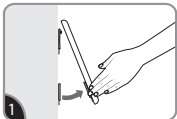


5 Remove one side of liners. Place each
pair of strips as shown. Press firmly.



6 Hang picture on hanger. Remove
remaining liners and press frame to
wall for 30 secs.

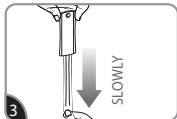
REMOVE



1 Grab bottom corners and peel frame from
wall. Do not pull straight off.



2 Hold hanger gently in place. Never pull the
strip towards you! Always pull straight down.



3 Stretch each strip slowly against the wall at
least 38 cm. Repeat for stabilizer strips.

Hanger can be reused with Command® Large Refill Strips.

▲ CAUTION:
Do not hang over beds or use on
wallpaper. May not adhere well
to vinyl surfaces.

Do not hang valuable or
irreplaceable items or clocks.

Do not apply the stabilizer
strips to paper or soft surfaces
on frame.

Use only one hanger per picture.
For indoor use only. Apply to
surfaces between 10°- 40°C.
Wait a minimum of 28 days after
painting to apply.

Hanger made in China / Strips
made in Singapore.

3M and Command
are trademarks of 3M.

© 3M 2016.
All rights reserved.
34-8717-3728-3
command.com

The following statements do not apply to products distributed in Australia
and New Zealand. Consumers must rely on their statutory rights.

WARRANTY & LIABILITY:

This product will be free from defects in material and manufacture. Please
read the instructions carefully. 3M will not be liable for any loss or damage
caused by incorrect use, application or removal of the product. If this
product is found to be defective, your remedy shall be, at 3M's option,
replacement of the product or refund of the purchase
price. To the extent permitted by law, 3M will not
be liable for any other loss or damage arising
from the use of this product.

Dist. By:
3M, Construction and Home
Improvement Markets Division

3M Australia Pty Limited
Bldg A, 1 Rivett Road
North Ryde, NSW 2113
PH: 1800 025 725

3M New Zealand Ltd
94 Apollo Drive, Rosedale,
Auckland 0632
PH: 0800 436 435

3M Technologies (S) Pte Ltd.
1 Yishun Avenue 7,
Singapore 768923
PH: (65) 6450-8888



Please dispose packaging thoughtfully.

