

# UL System No. FF-D-0002

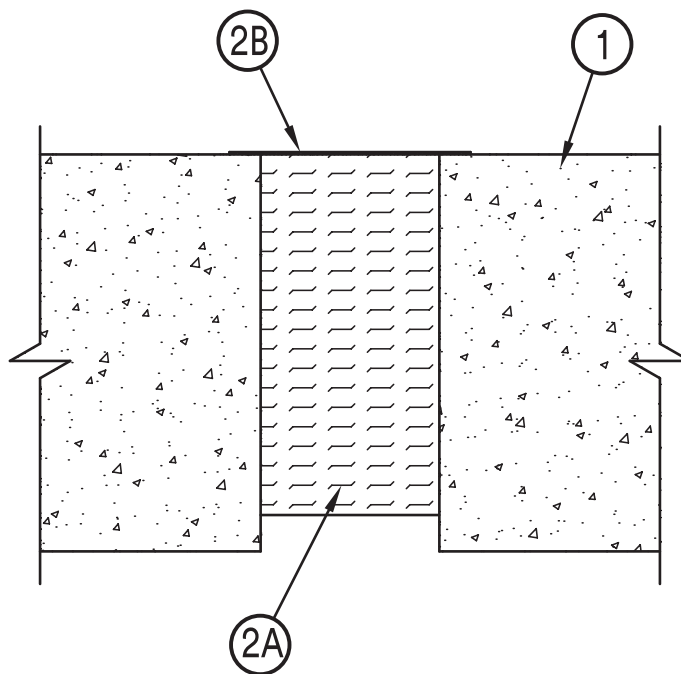
January 13, 2017

## ANSI/UL2079

Assembly Rating – 2 Hr  
 Nominal Joint Width – 2 in  
 Class II Movement Capabilities – 19% or 10% Compression  
 or Extension (See Item 2)  
 L Rating at Ambient – Less than 1 CFM/Lin Ft  
 L Rating at 400°F – Less than 1 CFM/Lin Ft

## CAN/ULC S115

F Rating – 2 Hr  
 FT Rating – 2 Hr  
 FH Rating – 2 Hr  
 FTH Rating – 2 Hr  
 Nominal Joint Width – 51 mm  
 Class II Movement Capabilities – 19% or 10% Compression  
 or Extension (See Item 2)  
 L Rating at Ambient – Less than 1.55 L/s/lin m  
 L Rating at 204°C – Less than 1.55 L/s/lin m



1. **Floor Assembly** – Min 4-1/2 in. (114 mm) thick steel-reinforced lightweight or normal weight (100-150 pcf or 1600-2400 kg/m<sup>3</sup>) structural concrete.
2. **Joint System** – Max width of joint (at time of installation of joint system) is 2 in. The joint system is designed to accommodate a max 19 percent compression or extension from its installed width except that when the Fire Barrier Watertight Spray (see Item 2B) is used, the movement is limited to max 10 percent compression and extension. The joint system shall consist of the following:
  - A. **Forming Material\*** – Min 4 pcf (64 kg/m<sup>3</sup>) mineral wool batt insulation installed in joint opening as a permanent form. Batt cut to min width of 4 in. (102 mm) and installed edge-first into joint opening, parallel with joint direction. When 3M Fire Barrier Watertight Spray is used, batts to be cut to min width of 4-1/2 in. (114 mm). The batt sections are compressed min 50 percent in thickness and the compressed batt sections are installed flush with the top surface of floor. Adjoining lengths of batt to be tightly-butted with butted seams spaced min 48 in. (1.2 m) apart along the length of the joint.
 

**INDUSTRIAL INSULATION GROUP LLC** – MinWool-1200 Safing  
**ROCK WOOL MANUFACTURING CO** – Delta Board  
**ROCKWOOL MALAYSIA SDN BHD** – Type Safe  
**ROXUL INC** – Type Safe  
**THERMAFIBER INC** – Type SAF
  - B. **Fill, Void or Cavity Material\*** – Min 1/16 in. (1.6 mm) dry thickness (min 1/8 in. or 3.2 mm wet thickness) of fill material sprayed or brushed on top surface of floor to completely cover mineral wool and overlap a min of 1/2 in. (13 mm) onto concrete floor. When 3M Fire Barrier Watertight Spray is used, min wet (and dry) thickness of spray is 1/10 in. (2.5 mm).
 

**3M COMPANY** – FireDam™ Spray 200, 3M Fire Barrier Watertight Spray
  - B1. **Fill, Void or Cavity Material\* – Tape** – As an alternate to Item 2B, Tape cut to size and press applied to top surface of floor to completely cover mineral wool and overlap a min of 1 in. (25 mm) onto the concrete floor at both edges of joint. Tape shall be applied in minimum 1 ft (305 mm) lengths along the joint at top of floor and adjoining lengths of Tape shall overlap min 1/2 in. (13 mm).
 

**3M COMPANY** – 3M Fire and Water Barrier Tape

\*Indicates such products shall bear the UL or cUL Certification Mark for jurisdictions employing the UL or cUL Certification (such as Canada), respectively. 

Reprinted from the Online Certifications Directory with permission from UL©

Construction Joints

Floor to Floor

FFD