

UL System No. FW-D-1040

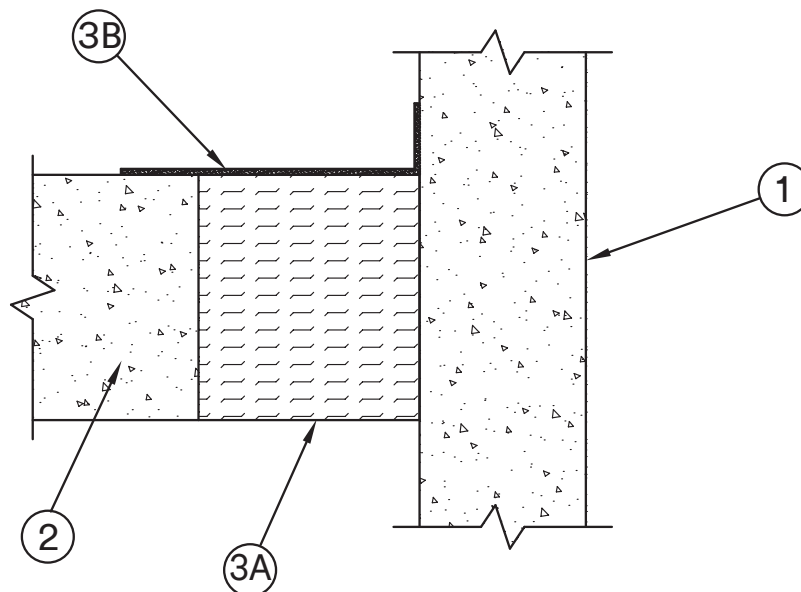
January 17, 2017

ANSI/UL2079

Assembly Rating – 3 Hr
 Nominal Joint Width – 4 in.
 Class II Movement Capabilities – 19% or 10% Compression
 or Extension (See Item 2)
 L Rating at Ambient – Less than 1 CFM/Lin Ft
 L Rating at 400°F – Less than 1 CFM/Lin Ft

CAN/ULC S115

F Rating – 3 Hr
 FT Rating – 3 Hr
 FH Rating – 3 Hr
 FTH Rating – 3 Hr
 Nominal Joint Width – 102 mm
 Class II Movement Capabilities – 19% or 10% Compression
 or Extension (See Item 2)
 L Rating at Ambient – Less than 1.55 L/s/lin m
 L Rating at 400°F – Less than 1.55 L/s/lin m



1. **Wall Assembly** – Min 6 in. (152 mm) thick reinforced lightweight or normal weight (100-150 pcf or 1600-2400 kg/m³) structural concrete. Wall may also be constructed of any UL Classified **Concrete Blocks***.
 See **Concrete Blocks** (CAZT) category in the Fire Resistance Directory for names of manufacturers.
2. **Floor Assembly** – Min 6 in. (152 mm) thick steel-reinforced lightweight or normal weight (100-150 pcf or 1600-2400 kg/m³) structural concrete.
3. **Joint System** – Max width of joint (at time of installation of joint system) is 4 in. (102 mm). The joint system is designed to accommodate a max 19 percent compression or extension from its installed width, except that when the **Fire Barrier Watertight Spray** (see Item 2B) is used, the movement is limited to max 10 percent compression and extension. The joint system shall consist of the following:
 - A. **Forming Material*** – Min 4 pcf (64 kg/m³) mineral wool batt insulation installed in joint opening as a permanent form. Batt cut to min width of 6 in. (152 mm) and installed edge-first into joint opening, parallel with joint direction, such that batt sections are compressed min 50 percent in thickness and such that the compressed batt sections are flush with the top surface of floor. Adjoining lengths of batt to be tightly-butted with butted seams spaced min 36 in. (914 mm) apart along the length of the joint.
 INDUSTRIAL INSULATION GROUP LLC – MinWool-1200 Safing
 ROCK WOOL MANUFACTURING CO – Delta Board
 ROCKWOOL MALAYSIA SDN BHD – Type Safe
 ROXUL INC – Type Safe
 THERMAFIBER INC – Type SAF
 - B. **Fill, Void or Cavity Material*** – Min 1/16 in. (1.6 mm) dry thickness (min 1/8 in. or 3.2 mm wet thickness) of fill material sprayed or brushed on top surface of floor to completely cover mineral wool and overlap a min of 1/2 in. (13 mm) onto concrete floor and wall. When 3M Fire Barrier Watertight Spray is used, min wet (and dry) thickness of spray is 1/10 in. (2.5 mm).
 3M COMPANY – FireDam™ Spray 200, 3M Fire Barrier Watertight Spray
 - B1. **Fill, Void or Cavity Material* – Tape** – As an alternate to Item 3B, Tape cut to size and press applied to top surface of floor to completely cover mineral wool and overlap a min of 1 in. (25 mm) onto the concrete floor and wall. Tape shall be applied in minimum 1 ft (305 mm) lengths along the joint at top of floor and adjoining lengths of Tape shall overlap min 1/2 in. (13 mm).
 3M COMPANY – 3M Fire and Water Barrier Tape

*Indicates such products shall bear the UL or cUL Certification Mark for jurisdictions employing the UL or cUL Certification (such as Canada), respectively.

Reprinted from the Online Certifications Directory with permission from UL©

Construction Joints

Floor to Wall

FWD