

3M

Filtek™

Bulk Fill
Posterior Restorative

**Make
posterior
restorations
fast and
easy.**



Fast and easy

3M™ Filtek™ Bulk Fill Posterior Restorative



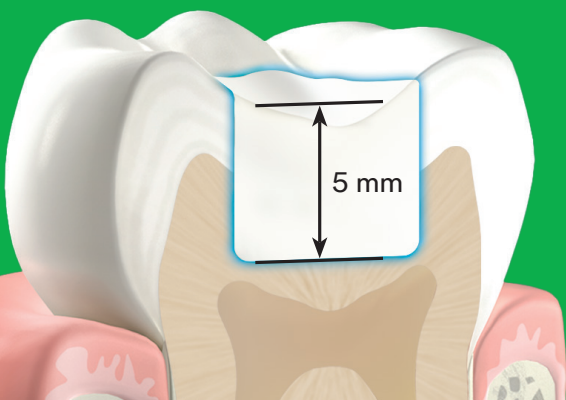
One increment up to 5 mm. No expensive dispensing devices or time-consuming layers. Now posterior restorations are made simple.

There's no question that bulk fill materials save time. However, true simplification involves eliminating complicated expensive dispensing devices, additional layers and multiple steps—without compromising wear resistance or stress relief.

3M™ Filtek™ Bulk Fill Posterior Restorative is your one-step bulk placement solution designed to improve productivity by allowing fast and easy posterior restorations.

- ✓ One-step placement, no additional capping layer
- ✓ Fast and easy procedure
- ✓ Excellent adaptation without additional expensive dispensing devices
- ✓ Stress relief to enable up to 5mm depth of cure
- ✓ Better in vitro wear resistance than market-leading bulk fill materials
- ✓ Excellent handling and sculptability
- ✓ TRUE nanofiller technology and two innovative methacrylate monomers act to lower polymerization stress without compromising wear

It's as simple as this ...



+



One bulk fill placement
up to 5 mm

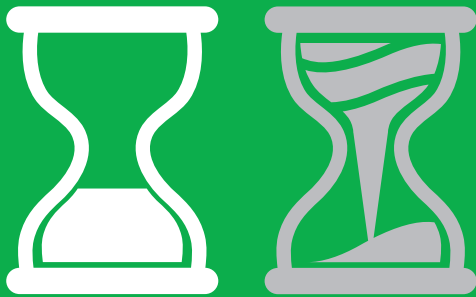
10 sec. light cure x 3
(occlusal, buccal, lingual)

Dentists were asked to place and cure different restorations and rank the materials based on preference.

In a simulated operatory setting, we put 3M™ Filtek™ Bulk Fill Posterior Restorative head-to-head against several restorative materials that require different placement techniques. The materials included an incrementally placed composite and a flowable bulk fill composite.

3M™ Filtek™ Bulk Fill Posterior Restorative stands out over the competition.

24% faster placement time
vs incrementally placed composite



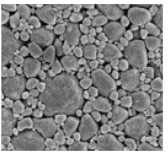
2X the number of dentists



preferred the placement technique of 3M™ Filtek™ Bulk Fill Posterior Restorative over that of an incrementally placed composite—and over a bulk fill flowable composite with a capping layer.

TRUE nanofiller technology and innovative chemistry

5K magnification of nanocluster



50K magnification of nanocluster

Filtek Bulk Fill Posterior Restorative uses the same TRUE nanofiller technology that's been time-proven by other leading Filtek™ restorative products. Not only does this technology contribute to high strength, excellent handling and better wear resistance, but also to restorations that are fast and easy to polish.

In addition to this TRUE nanofiller technology, Filtek Bulk Fill Posterior Restorative also contains two innovative **methacrylate monomers** that, in combination, act to lower polymerization stress without compromising wear.

The combination of these two technologies results in an easy-to-use, one-step placement, restorative material designed to simplify your posterior restorations.

Also from the brand you trust ...

3M™ Filtek™ Bulk Fill Flowable Restorative

An excellent low-stress liner/base solution.

If you're looking for a great, all-around, low-stress, bulk fill flowable, this is it. 3M™ Filtek™ Bulk Fill Flowable Restorative is up to 50% stronger than the leading bulk fill flowable¹—and offers over 3X the wear resistance.¹ Excellent for use as:²

- ✓ a liner for Class I and Class II restorations
- ✓ a fast bulk fill base up to 4 mm for Class I and Class II restorations
- ✓ a wear-resistant solution for small, non-stress-bearing occlusal surfaces, Class III and Class V

1. Compared to SureFil® SDR® flow+ Bulk Fill Flowable. 3M in vitro data on file.
2. Refer to Instructions for Use for complete list of indications.



Ordering Information

3M™ Filtek™ Bulk Fill Posterior Restorative



| Refill | Item # | Item # |
|--------|---------|---------|
| Shade | Syringe | Capsule |
| A1 | 4863A1 | 4864A1 |
| A2 | 4863A2 | 4864A2 |
| A3 | 4863A3 | 4864A3 |
| B1 | 4863B1 | 4864B1 |
| C2 | 4863C2 | 4864C2 |

CAPSULE SHADE REFILLS include: 20 – 0.2g capsules; Technique Guide; Instructions for Use.

SYRINGE SHADE REFILLS include: 1 – 4g syringe; Technique Guide; Instructions for Use.

3M™ Filtek™ Bulk Fill Flowable Restorative



| Refill | Item # | Item # |
|-----------|---------|---------|
| Shade | Syringe | Capsule |
| A1 | 4862A1 | 4861A1 |
| A2 | 4862A2 | 4861A2 |
| A3 | 4862A3 | 4861A3 |
| Universal | 4862U | 4861U |

| Item # | Product Description |
|--------|--|
| 3740T | Dispensing Tips 20 – 19-gauge dispensing tips |

SYRINGE SHADE REFILLS include: 2 – 2g syringes; 20 dispensing tips; Technique Guide; Instructions for Use.

CAPSULE SHADE REFILLS include: 15 – 0.2g capsules; Technique Guide; Instructions for Use.

www.3M.com



3M Oral Care
2510 Conway Avenue
St. Paul, MN 55144-1000 USA

Phone 1-800-634-2249
Web 3M.com/dental

3M Deutschland GmbH
Location Seefeld
3M ESPE • ESPE Platz
82229 Seefeld • Germany
Info3MESPE@mmm.com
www.3MESPE.com

3M and Filtek are trademarks of 3M or 3M Deutschland GmbH. Used under license in Canada. Please recycle.
© 3M 2017. All rights reserved. All other trademarks are not trademarks of 3M.