

Screen-optimized,  
72 dpi only!

**3M** Science.  
Applied to Life.™



3M Oral Care

# Highest precision sets your work apart from the crowd.

Digital impressioning with 3M™ True Definition Scanner –  
the new dimension of working comfort and precision for  
your orthodontic practice.



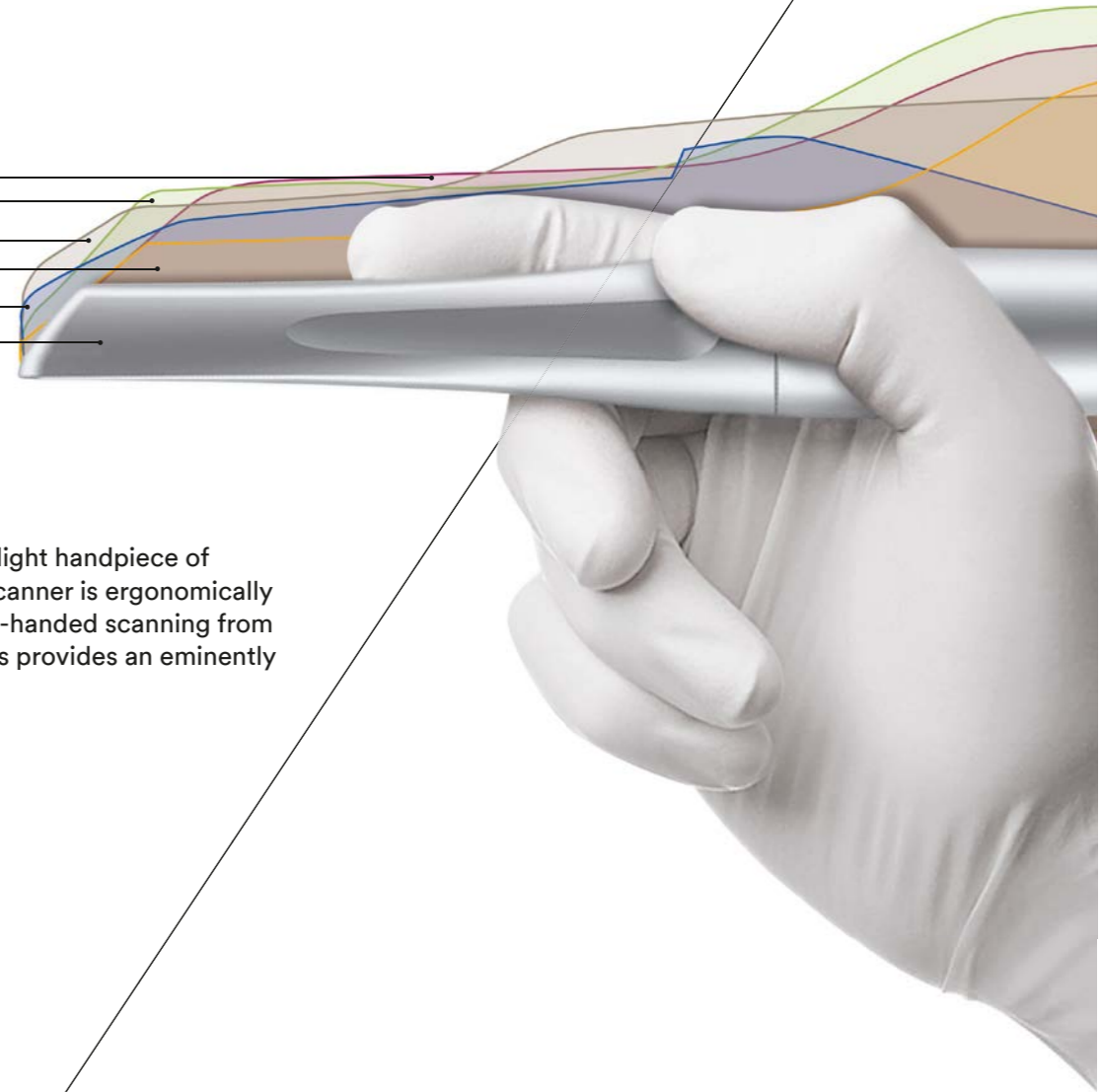
# With an easy touch to more comfort and reliability.

Allows you to move into digital orthodontics with ease. Accurate. Precise. The 3M™ True Definition Scanner supports open STL files, so you can work with your orthodontic lab, or share files with other trusted partners for expanded clinical solutions. Because your digital impressions are generated by 3M's 3D-in-motion video technology, they'll feature extraordinary detail with industry-leading accuracy, providing the best basis for 100% customized Incognito™ Appliances.



Trios®  
PlanScan®  
APOLLO DI  
Omniscam  
iTero®

3M™ True Definition Scanner



The particularly small and light handpiece of the 3M™ True Definition Scanner is ergonomically designed. It enables single-handed scanning from different positions and thus provides an eminently comfortable handling.



## Easy in terms of handling. Exact in terms of results.

The 3M™ True Definition Scanner enables an eminently fast and simple scanning process.



## Ease of Use:

Innovative design for fast, easy and comfortable scanning.



## Digital workflow puts an end to storage.

An impressively slim solution: Thanks to the continuous digital workflow, you can forget about the customary plaster models – as well as their storage.\*



## Full flexibility.

The 3M™ True Definition Scanner supports open STL files, giving you the option to have your data processed by your own lab or by external partners.

\* Please inform yourself at your regional dental association about legal recognition of digital model archiving.

# Much latitude for your own workflow – for full flexibility.

## Unlimited freedom of choice:

Unlike closed systems for digital impressions that impose restrictions on you in respect of material, design or manufacturing, the 3M™ True Definition Scanner is open to all systems that accept STL files. Thus, you can decide, flexibly and freely, how you want to work on each case. Dentists and dental

labs have the option to access and download the STL data via the 3M™ Connection Center. By the availability of open STL data, new opportunities for digital workflows emerge. In combination with orthodontic software packages accepting open STL they open up completely new ways for digital dentistry.

# Combine everything to form an end-to-end process. With certainty.

## All in one – convenient and failsafe.

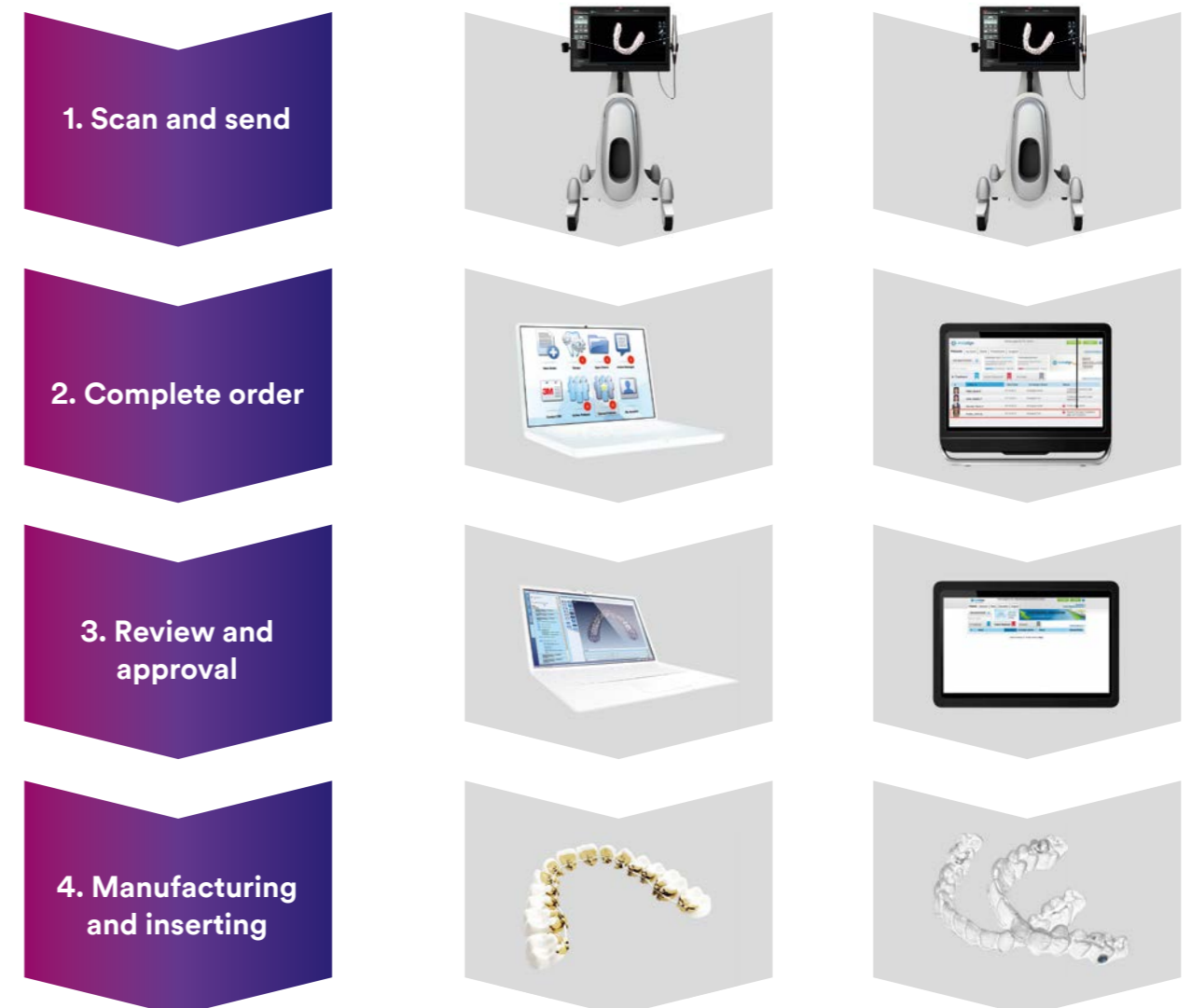
3M cooperates with leading manufacturers to ensure a seamless integration of digital CAD/CAM workflows. The so called trusted connections to partner companies stand for a gapless technical and clinical validation to make sure that performance and quality meet your high demands.

**Trusted workflows**

- Incognito™
- Invisalign®

**Open workflows**

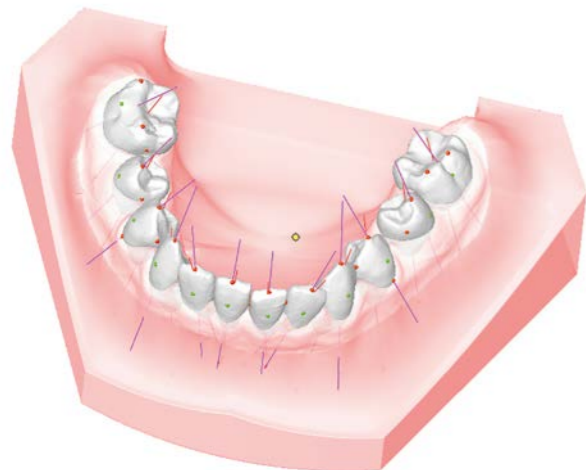
- Aligner splint
- Indirect bondingtray
- SLA model



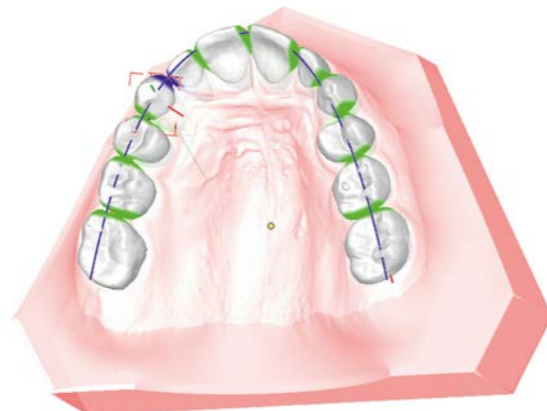
# Be sure of easier planning and administration. In any case.

Digital impressioning is your basis for a complete digital case planning. Any planning software with an open interface that can import STL data may be used for compiling your treatment plan. You have the option to visualize your setup, to plan the positioning

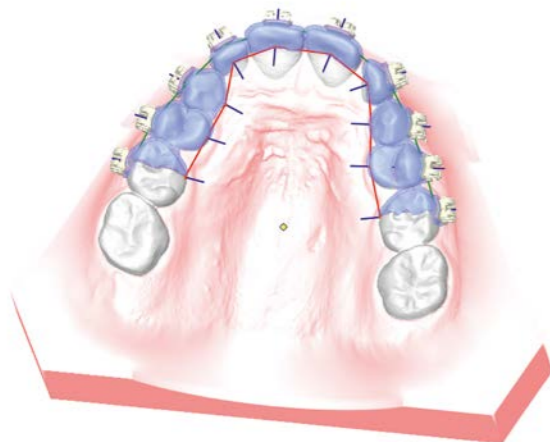
of brackets, to archive, and much more. Further processing can take place in your own lab or as well at an external partner. The data is digitally transferred, thus preventing any loss of time and quality.



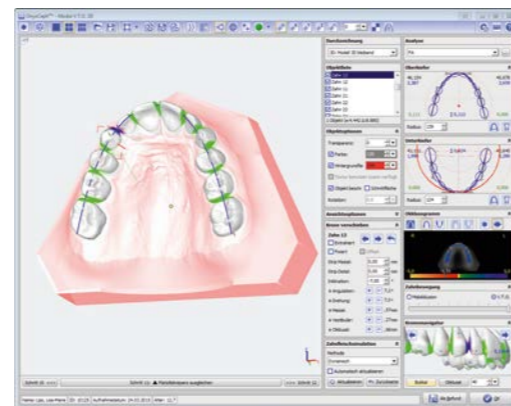
Socketed and segmented intra-oral scan (based on the 3M™ True Definition Scanner)



Single tooth movements in the module V.T.O.3D



Direct bracket transfer procedure



User interface OnyxCeph module virtual setup V.T.O.3D

**Note:** The digital planning software is not a part of the 3M™ True Definition Scanner but has to be acquired from a third party provider. Shown here by the example of OnyxCeph™. Artwork courtesy of Image Instruments.

# Your platform for the digital workflow: 3M™ Connection Center



- ▶ Unlimited data storage and archiving of digital models.
- ▶ Access to STL data at any time. Simple data sharing with partners.
- ▶ Regular software updates included. You always work with the latest version.
- ▶ Use of all trusted workflows – today and in future.
- ▶ Unlimited number of scans with full cost control.
- ▶ Compliance with European privacy regulations.

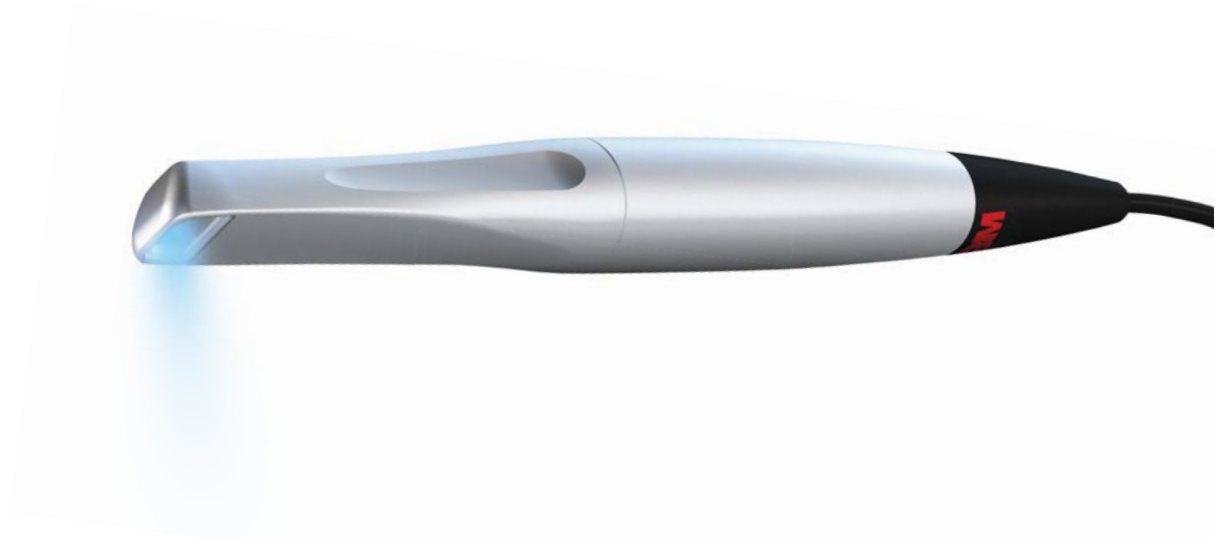
# 3M™ True Definition Scanner

## Technical Specifications

General Specifications and Classifications	
View	~10 mm × 13 mm at nominal depth
Working Depth	0 mm bis 17 mm from wand tip
Video Capture Rate/Flash Rate	20 captures/second (60 images/second)
Touch Screen Size	546.1mm (21.5 in.) diagonal
Dimensions of Cart Base (footprint)	48.77 cm × 73.41 cm (19.2 in. × 28.9 in.)
System Height (floor to top of bezel)	108.20 cm (42.6 in.)
Monitor Tilt Adjust	-30° to 45°
Power Input	100 – 120/200 – 240V ac, 50/60 Hz, 8A

Weights	
Total Shipping Weight	70.8 kg (156 lbs.)
Cart with Monitor	34 kg (75 lbs.)
Wand with Cable	233 g (8.2 oz.)

Wand Dimensions	
Length	254 mm (10 in.)
Wand Tip Width	16.2 mm (0.64 in.)
Wand Tip Height	14.4 mm (0.57 in.)
Maximum Diameter	24.3 mm (0.96 in.)
Wand Cable Length	2 m (6.6 ft.)
Calibration	No field calibration required



[www.3MESPE.com/TrueDefinition](http://www.3MESPE.com/TrueDefinition)



**3M Oral Care**  
 2510 Conway Avenue  
 St. Paul, MN 55144-1000  
 USA  
 1-800-634-2249

**3M Canada**  
 Post Office Box 5757  
 London, Ontario N6A 4T1  
 Canada  
 1-888-363-3685

3M, 3M Science. Applied to Life., ESPE and Incognito are trademarks of 3M Company or 3M Deutschland GmbH. Used under licence in Canada. All other trademarks are owned by other companies.  
 Please recycle. Printed in U.S.A. © 3M 2016. All rights reserved.

XXXXXXXXXX (01.2016)