

3M Science.
Applied to Life.™

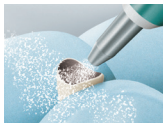
PFM Crown Cementation



Made easy with
3M™ Ketac™ Cem Plus
Resin Modified Glass Ionomer Cement

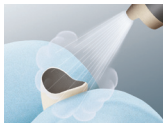


**Prepare
restoration.**



Step 1

Sandblast surfaces to be cemented with 30 or 50 micron aluminum oxide at a pressure of 2 Bar (30 psi) to create a matte surface appearance.



Step 2

Clean with alcohol and air dry with oil-free air.

**Pretreat
tooth.**



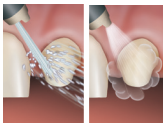
Step 3

Remove provisional restoration. Mechanically clean prepared tooth (e.g. with pumice paste).



Tip:

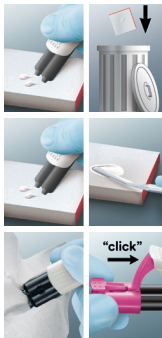
Make sure any residue (temporary cement, desensitizers, astringents, disinfectants, etc.) is completely removed. Do not use H_2O_2 , EDTA or Na_2CO_3 .



Step 4

Rinse and lightly dry. Leave tooth surface moist. Do not over dry the tooth. Over drying can lead to post operative sensitivity.

**Apply
cement.**



Step 5

For Clicker Delivery:

- Dispense a small amount of cement to ensure even dispensing
- Discard this material
- Apply two clicks of the cement pastes onto a mixpad
- Hand mix with a spatula until a homogeneous mix is obtained
- Wipe the Clicker barrels independently to avoid contamination of the material and premature setting
- Ensure that the cap is put firmly in place (clicking sound).



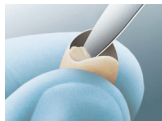
Tip: For a crown, typically two clicks would be needed.



Step 5

For Automix Delivery:

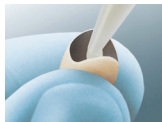
Dispense a small amount of cement onto the mixpad to ensure a perfect mix. Discard this material.



Step 6

For Clicker Delivery:

Apply a thin layer of cement to the inside surface of the restoration.



For Automix Delivery:

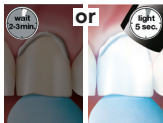
Dispense cement directly into the crown.

Seat and Clean-up.



Step 7

Firmly seat the crown with finger pressure.



Step 8

Excess cement can be removed 2 minutes after seating the restoration or after tack light curing 5 seconds per surface.



Step 9

Remove excess cement with a scaler while holding the crown in place.



Step 10

Set time is 5 minutes after placement in the mouth. Finish restoration and adjust occlusion.



Storage.



Step 11

For Clicker Delivery:

- Wipe the Clicker barrels independently to avoid contamination of the material and premature setting
- Ensure that the cap is put firmly in place (clicking sound)

For Automix Delivery:

Store with original sealing cap in place.

NOTE: **DO NOT** store with used mix tip.



Tip: To prevent premature curing and drying of the paste, be sure to follow recommended cleaning and storage steps. Ideal storage is normal ambient room temperature of 18–24°C.

**For further reference, please refer to
Instructions for Use, Step-by-Step
Card and Frequently Asked Questions.**



**3M Oral Care
2510 Conway Avenue
St. Paul, MN 55144-1000 USA**

**Phone 1-800-634-2249
[3M.com/DentalCements](https://www.3M.com/DentalCements)**

3M, Clicker, Elipar, ESPE, Ketac and RelyX are trademarks of 3M or 3M Deutschland GmbH. Used under license in Canada. © 3M 2018. All rights reserved. 70-2013-0826-2 (REV 7/2018)

3M Science.
Applied to Life.™

Zirconia Crown Cementation



Made Easy with
3M™ RelyX™ Unicem 2
Self-Adhesive Resin Cement

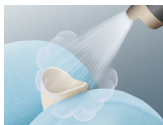


**Prepare
restoration.**



Step 1

Sandblast surfaces to be cemented with 30 or 50 micron aluminum oxide at a pressure of 2 Bar (30 psi) to create a matte surface appearance.



Step 2

Clean with alcohol and air dry with oil-free air.



Tip:

If sandblasting is done in laboratory before try-in, clean saliva contamination with NaOCl (ca. 5%) and rinse with water. Do not use phosphoric acid for cleaning.

**Pretreat
tooth.**



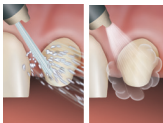
Step 3

Remove provisional restoration. Mechanically clean prepared tooth (e.g. with pumice paste).



Tip:

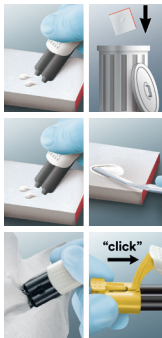
Make sure any residue (temporary cement, desensitizers, astringents, disinfectants, etc.) is completely removed. Do not use H_2O_2 , EDTA or $NaHCO_3$.



Step 4

Rinse and lightly dry. Leave tooth surface moist. Do not over dry the tooth. Over drying can lead to post operative sensitivity.

**Apply
cement
and seat.**



Step 5

For Clicker Delivery:

- Dispense a small amount of cement to ensure even dispensing
- Discard this material
- Apply two clicks of the cement pastes onto a mixpad
- Hand mix with a spatula until a homogeneous mix is obtained
- Wipe the Clicker barrels independently to avoid contamination of the material and premature setting
- Ensure that the cap is put firmly in place (clicking sound).



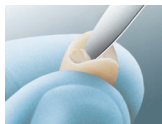
Tip: For a crown, typically two clicks would be needed.



Step 5

For Automix Delivery:

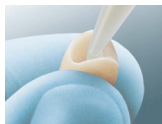
Dispense a small amount of cement onto the mixpad to ensure a perfect mix. Discard this material.



Step 6

For Clicker Delivery:

Use the mixing spatula to apply the cement into the crown.



For Automix Delivery:

Dispense cement directly into the crown.



Step 7

Firmly seat the crown with finger pressure.



Clean-up.



Step 8

Tack cure for 1–2 seconds.



Step 9

Remove excess cement with a scaler while holding the crown in place.



Tip:

Do not exceed recommended tack cure time, otherwise clean-up will be difficult. For a controlled curing time, use 3M™ Elipar™ S10 LED Curing Light or 3M™ Elipar™ DeepCure-S LED Curing Light tack curing function.



Final cure.



Step 10

Light cure for 20 seconds per surface or wait 6 minutes from start of mix for dark cure. Finish and polish as needed.



Finished crown.

For further reference, please refer to Instructions for Use, Step-by-Step Card and Frequently Asked Questions.