



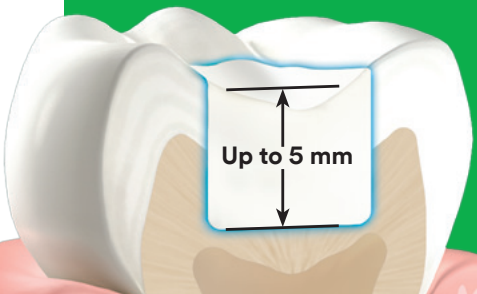
# Filtek™

## One Bulk Fill Restorative



### 3M™ Filtek™ One Bulk Fill Restorative

- Fast and easy one-step placement
- Increased opacity for improved esthetics
- Stress relief to enable up to 5mm depth of cure
- Excellent adaptation
- No need for layering or expensive dispensing devices
- Excellent handling and sculptability
- 3M's true nanotechnology provides superior wear resistance and excellent polish retention
- High radiopacity
- Unique tip design for easier access to deep cavities
- Available in 5 shades



## You choose it for speed. Now it's more esthetic, too.

Posterior restorations are challenging—which is why bulk fill composites that simplify and speed up the procedure have become so popular. However, until now, the faster, easier placement of bulk fill has been at the sacrifice of esthetics. So, as a global leader in esthetic and restorative technologies, we went back to our experts for a solution you're sure to love: 3M™ Filtek™ One Bulk Fill Restorative.

Designed for the posterior, its unique optical properties and improved opacity give you the simplicity of one-step placement—up to 5 mm—without compromising esthetic results.

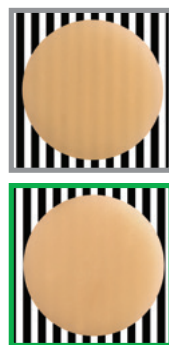
### Smart Contrast Ratio Management increases opacity without sacrificing depth of cure

Further development of 3M nanotechnology allows us to manage opacity and depth of cure in a smarter way. With our unique Smart Contrast Ratio Management technology, we've increased opacity without reducing depth of cure.

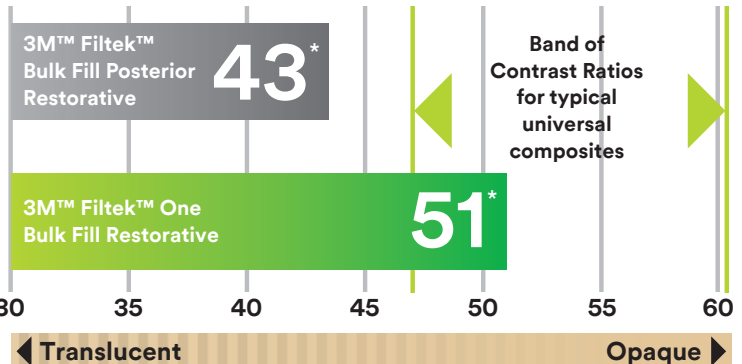
In its cured state, Filtek One Bulk Fill Restorative has a higher opacity than 3M™ Filtek™ Bulk Fill Posterior Restorative, resulting in improved esthetics.

Did you know?

Contrast Ratio is the measurement of the translucency or opacity of the material.



#### Contrast Ratio



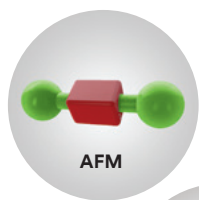
\*The contrast ratio is the average of all shades.

# You'll like that it's simple. They'll be happy that it looks good, too.

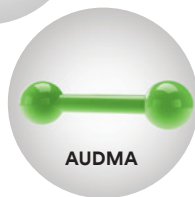
## More innovative technologies behind 3M™ Filtek™ One Bulk Fill Restorative

### Innovative AUDMA and AFM monomers

Reduces shrinkage and relieves stress to allow bulk fill placement up to 5 mm.



Addition-fragmentation monomer (AFM) relieves stress during polymerization.

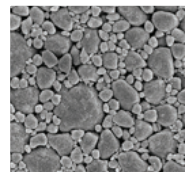


Aromatic urethane dimethacrylate (AUDMA) helps reduce the amount of shrinkage and stress that occurs during polymerization.

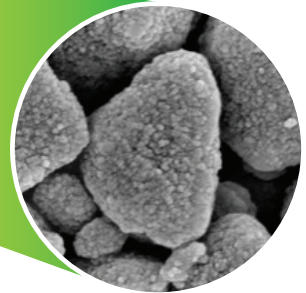
### 3M's TRUE nanofiller technology

Provides superior wear resistance and excellent polish retention.

5K magnification  
of nanocluster



50K magnification  
of nanocluster



## Ordering Information



### 3M™ Filtek™ One Bulk Fill Restorative

Refill	Item #	Item #
Shade	Syringe	Capsule
A1	4866A1	4867A1
A2	4866A2	4867A2
A3	4866A3	4867A3
B1	4866B1	4867B1
C2	4866C2	4867C2

SYRINGE SHADE REFILLS include: 1 – 4g syringe; Technique Guide; Instructions for Use.

CAPSULE SHADE REFILLS include: 20 – 0.2g capsules; Technique Guide; Instructions for Use.

[www.3M.com/FiltekOne](http://www.3M.com/FiltekOne)



3M Oral Care  
2510 Conway Avenue  
St. Paul, MN 55144-1000 USA  
Phone 1-800-634-2249  
Web 3M.com/dental

3M Canada  
Post Office Box 5757  
London, Ontario N6A 4T1  
Canada  
Phone 1-888-363-3685

3M and Filtek are trademarks of  
3M or 3M Deutschland GmbH.  
Used under license in Canada.  
Printed in USA. © 3M 2016.  
All rights reserved.  
70-2013-0804-9