

Sinfony™

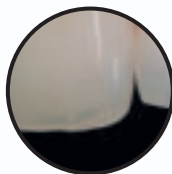
Indirect Lab Composite



The indirect lab composite that combines strength, beauty and versatility

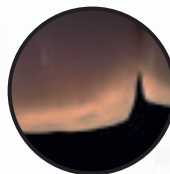
Sinfony indirect lab composite is the micro-hybrid composite developed for laboratories and designed to build and layer like porcelain. Excellent for inlays/onlays, veneers, and full crowns, Sinfony indirect lab composite has been proven in tests to be as strong or stronger than other popular brands and to possess inherent advantages in flexibility, impact strength, and color stability. Sinfony indirect lab composite is the clear choice for dental laboratories concerned with performance and esthetics.

[natural vitality]



Close-up view of the incisal region in reflected light.

[amber opalescent effect]



Close-up view of the incisal region in transmitted light.

[fluorescence]



Close-up view taken in UV light.



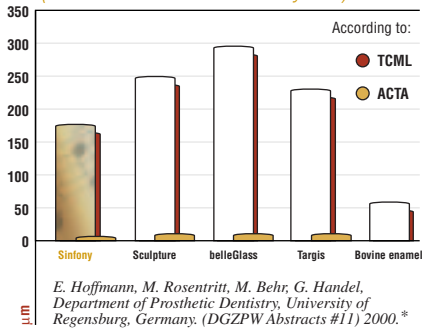
Sinfony indirect lab composite gives a virtuoso performance.

- Excellent esthetics/translucency
- Superior wear characteristics
- Ease of finishing and polishing
- Plaque and stain resistance
- Handles like porcelain

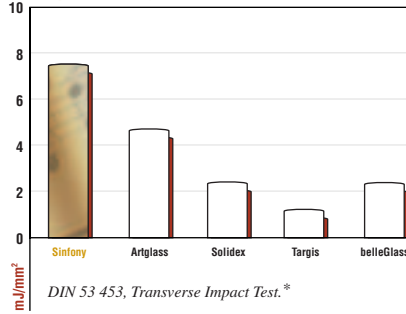
3M ESPE

Sinfony™ Indirect Lab Composite

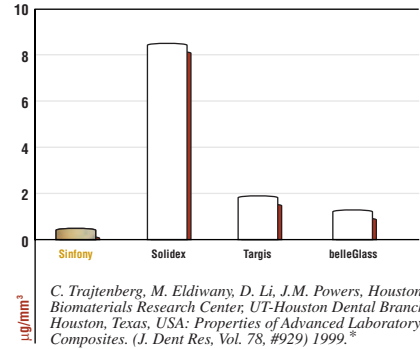
Abrasion of Indirect Composites (mastication simulation and 3-body wear)



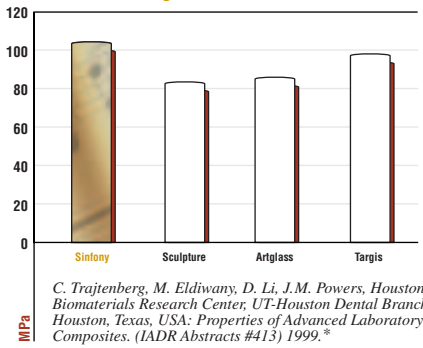
Impact Strength



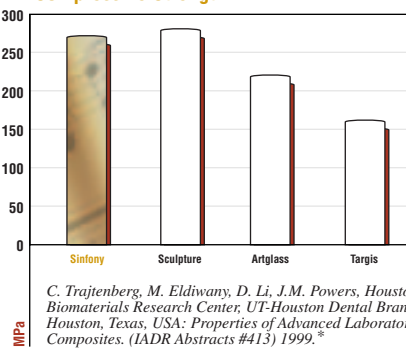
Solubility



Flexural Strength



Compressive Strength



Sinfony

*These studies were sponsored by 3M ESPE AG.



For adhesive bonding to metal on indirect procedures use the Rocatec™ Jr. Bonding System

Rocatec bonding system is a chemical adhesive system for indirect procedures. Sinfony indirect lab composite, used in combination with Rocatec bonding system on metal copings, results in outstanding bond strengths without any marginal gap.

3M ESPE, Sinfony indirect lab composite and other dental lab products hotline: 1-800-216-9502
3M ESPE Web site: www.3MESPE.com

3M, ESPE, Rocatec and Sinfony are trademarks of 3M or 3M ESPE AG.
Artglass is a trademark of Culzer. belleGlass is a trademark of Kerr.
Sculpture is a trademark of Jener/Pentron. Solidex is a trademark of Shofu.
Targis is a trademark of Ivoclar-Vivadent.

3M ESPE

Dental Products

3M Center
Building 275-2SE-03
St. Paul, MN 55144-1000
USA

Dental Products

3M Canada
Post Office Box 5757
London, Ontario N6A 4T1
Canada
1 800 265-1840 ext. 6229



40% Pre-consumer waste paper
10% Post-consumer waste paper

Printed in U.S.A.
© 3M 2001.
All rights reserved.
70-2009-2420-0