

**3M** Science.  
Applied to Life.™



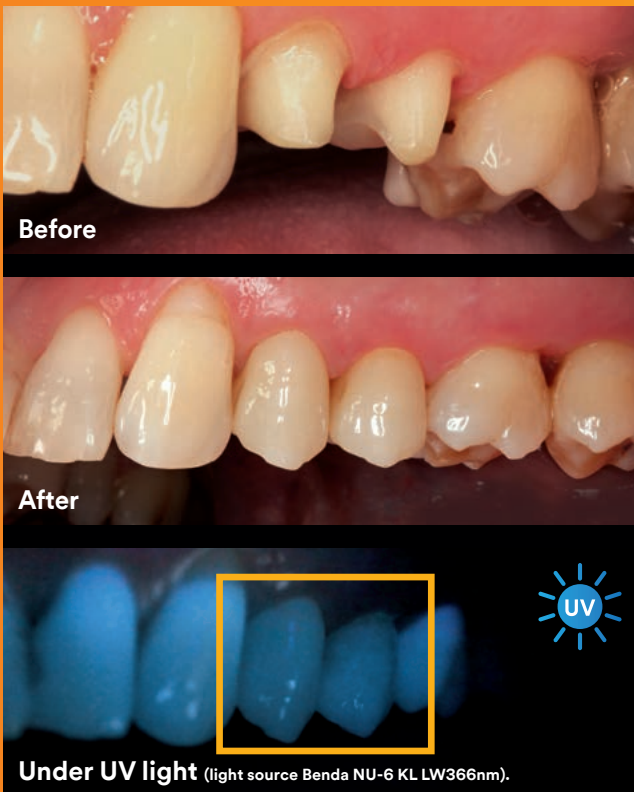
Available from  
your lab.  
**In all VITA  
classical  
shades.**

**3M™ Lava™ Esthetic**  
Esthetic Fluorescent Full-Contour Zirconia

**Natural esthetics.  
Whatever the case.**

# For the first time, a zirconia that doesn't compromise on esthetics.

Ask your lab for 3M™ Lava™ Esthetic Zirconia – the high-quality cubic zirconia from 3M – and you will benefit from a strong and esthetic option for your crown and bridge cases.



Featuring a new 3M proprietary shading technology, Lava Esthetic zirconia is the first zirconia designed to deliver all it takes for lifelike full-contour esthetics.

- **High translucency**, optimized for esthetic full-contour restorations.
- Built-in shade gradient designed for **excellent shade match to all VITA classical shades**.
- First zirconia with **built-in fluorescence** for more lifelike esthetics.

## Why fluorescence matters.

Teeth are fluorescent. They interact with the UV light present in sunlight and emit blueish light. This makes teeth appear brighter and less greyish.



Sintered anterior crowns photographed on a fluorescent stump material under black light conditions simulating natural UV light (light source Benda NU-6 KL LW366nm).

Lava Esthetic zirconia is the first zirconia offering tooth-like built-in fluorescence.\*

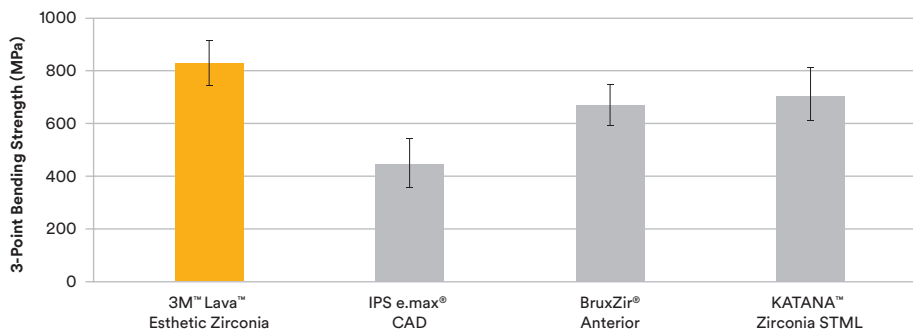


\* Fluorescence determined with light sources simulating natural UV light.

# All you ever wanted in one all-ceramic material.

## Durable and versatile.

With 800 MPa\* through-and-through Lava Esthetic zirconia is stronger than glass ceramics and other leading cubic zirconia. Indication range covers single unit restorations to 3-unit posterior bridges. With minimum 0.8 mm wall thickness, Lava Esthetic zirconia allows for less reduction versus IPS e.max®.



Fracture strength test method acc. ISO 6872:2015.

### Indications:

- Crowns
- 3-unit bridges
- Inlays/onlays
- Veneers

Please refer to the instructions for use for details.

## Easy to adjust.

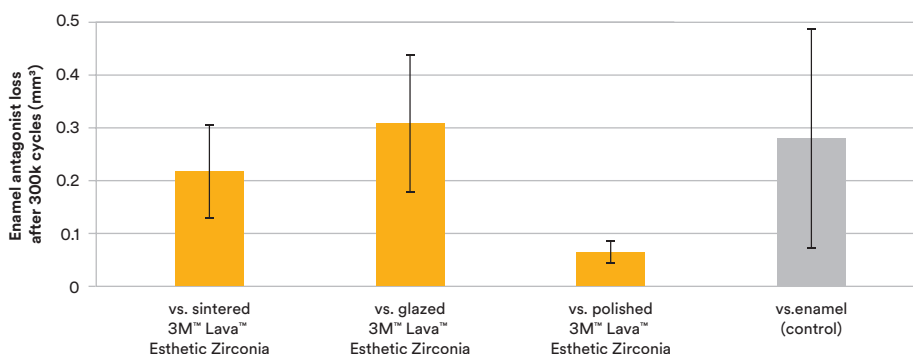
Lava Esthetic restorations are fabricated in a precise digital process by your dental lab expert. If minor adjustments are required, Lava Esthetic zirconia can be more easily adjusted than conventional zirconia.\*\*

Use a fine-grain diamond bur and water cooling. Repolish adjusted area to maintain antagonist wear friendliness.



## Antagonist friendly.

Full-contour restorations made of Lava Esthetic zirconia are wear-friendly against opposing enamel according to an in-vitro study conducted at the University of Alabama at Birmingham.



Wear of enamel antagonist against incisal enamel and 3M™ Lava™ Esthetic Fluorescent Full-Contour Zirconia.

Source: Dr. J. O. Burgess, Dr. N. Lawson, University of Alabama at Birmingham School of Dentistry, U.S.A., J. Dent. Res. Vol #96 (Spec Iss A): 0096, 2017.

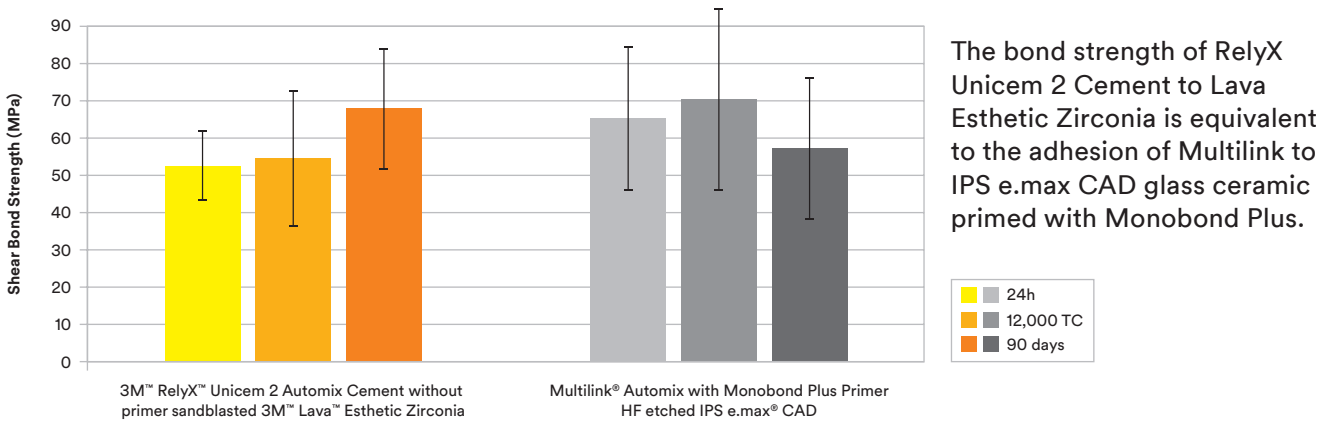
\*3-point bending strength according to ISO 6872:2015; qualified for Type II, class 4; indications: crowns, bridges with a maximum of one pontic that must be supported on each side by a crown (prosthesis not to exceed three units), inlays, onlays and veneers.

\*\*Source: Dittmann et al., 3M Oral Care, J. Dent. Res. Vol #96 (Spec Iss A): 0094, 2017.



# Excellent bond strength. Fewer steps.

For final cementation of 3M™ Lava™ Esthetic Zirconia restorations, 3M recommends using 3M™ RelyX™ Unicem 2 Automix Self-Adhesive Resin Cement offering high bond strength and ease of use without compromising reliability and esthetics. And, as there is no need to etch or prime, this easy-to-use cement will save you precious time and work steps.



The bond strength of RelyX Unicem 2 Cement to Lava Esthetic Zirconia is equivalent to the adhesion of Multilink to IPS e.max CAD glass ceramic primed with Monobond Plus.

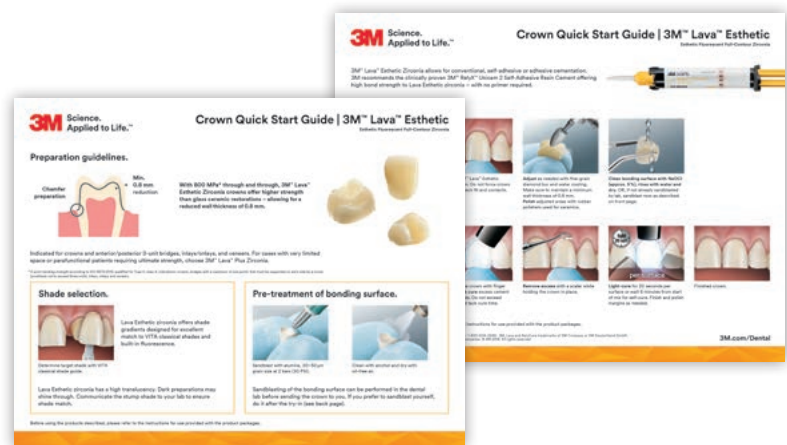
Shear bond strength after 24 hours, 12,000 thermocycles and 90 days storage, respectively. Source: Rosentritt et al., University of Regensburg, Dentistry Journal 2017, 5, 32

3M™ RelyX™ Unicem 2 Automix Cement	
Refills	Shade
56846	A2 Universal
56847	A3 Opaque
56848	Translucent



Each refill contains 1 syringe – 8.5 g, 15 mixing tips (regular), 5 mixing tips (wide), 5 endo tips

Ask your 3M sales representative for your copy of the  
**3M™ Lava™ Esthetic Fluorescent Full-Contour Zirconia Crown Quick Start Guide**  
or download from [3M.com/LavaEsthetic](http://3M.com/LavaEsthetic)



**3M Oral Care**  
2510 Conway Avenue  
St. Paul, MN 55144-1000  
USA  
1-800-634-2249

**3M Canada**  
Post Office Box 5757  
London, Ontario N6A 4T1  
Canada  
1-888-363-3685

[3M.com/Dental](http://3M.com/Dental)

3M, Lava and RelyX are trademarks of 3M Company or 3M Deutschland GmbH. Used under license in Canada. All other trademarks are owned by other companies.  
© 3M 2018. All rights reserved.