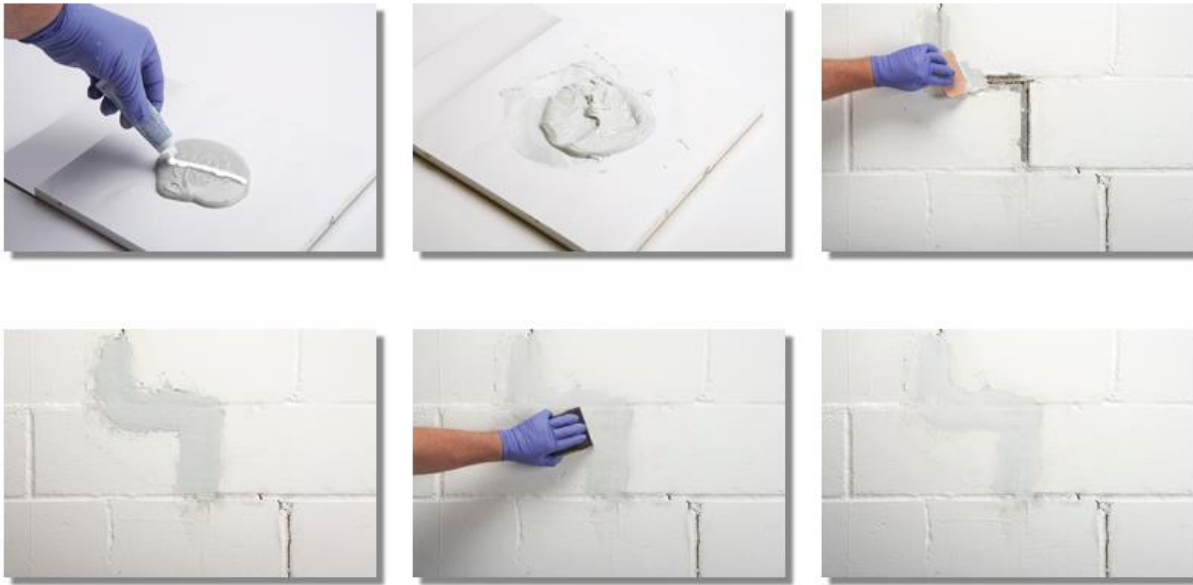


BONDO® All-Purpose Putty

This fast curing 2-part filler allows you to make high-quality, long-lasting repairs to metal, masonry, concrete, painted wood, plastic, drywall and more. Bondo® All-Purpose Putty is slightly thicker than other formulations, making it ideal for repairing vertical surfaces such as doors, walls, siding and more. The product is formulated to be non-shrinking, water resistant, permanent and light gray in color once cured.



Directions for Use

1. Clean repair area with warm, soapy water or a surface cleaner to remove dirt, oil, dust or contaminants; let dry completely.
 2. Sand the surface with 3M™ Sandpaper 80 grit to remove all primer, paint, loose rotted wood or rust extending 1 to 2 inches beyond the damaged area. Remove all dust created from sanding. Re-clean the surface following Step #1
 3. Remove a 3-inch diameter circle, 1/2 inch thick of Bondo® All-Purpose Putty and place on a clean non-porous mixing surface. Knead the Bondo® Cream Hardener tube thoroughly to ensure contents are well mixed. Squeeze a 3-inch strip/bead of cream hardener across the putty that you removed from the can. (Recommended: mix small amounts that can be used in 3-4 minutes.)
 4. Thoroughly mix for approximately 2 minutes using the Bondo® Spreader. Mix the putty and hardener keeping the contents thinly spread out will keep the putty from drying as quickly and give you a longer working time.
 5. Spread initial thin layer of mixed putty over repair area using firm pressure to ensure maximum adhesion. Apply additional layers until desired thickness is reached. 6. Allow the putty to dry 15 minutes at 77 degrees F (25 degrees C). In cooler climates, putty may take 20-30 minutes to dry.
 7. Using 3M™ Sandpaper 80 grit, sand and shape the filled area to the contour of the surface. Feather the edge of the area with 3M™ Sandpaper 180 grit until the surface is smooth. If dust builds up or clogs the sandpaper, remove by brushing with wire brush.
- Optional - For 1/2 inch or deeper fill repairs making more than one application is recommended. 8. Prime and paint the area per the manufacturer's recommendation.
9. Clean tools with acetone or lacquer thinner per manufacturer's instructions.

For application or technical information, call 1-800-421-2663 or 404-696-2730.