



Installation and Use Instructions for Python Safety Dual Tool Holsters

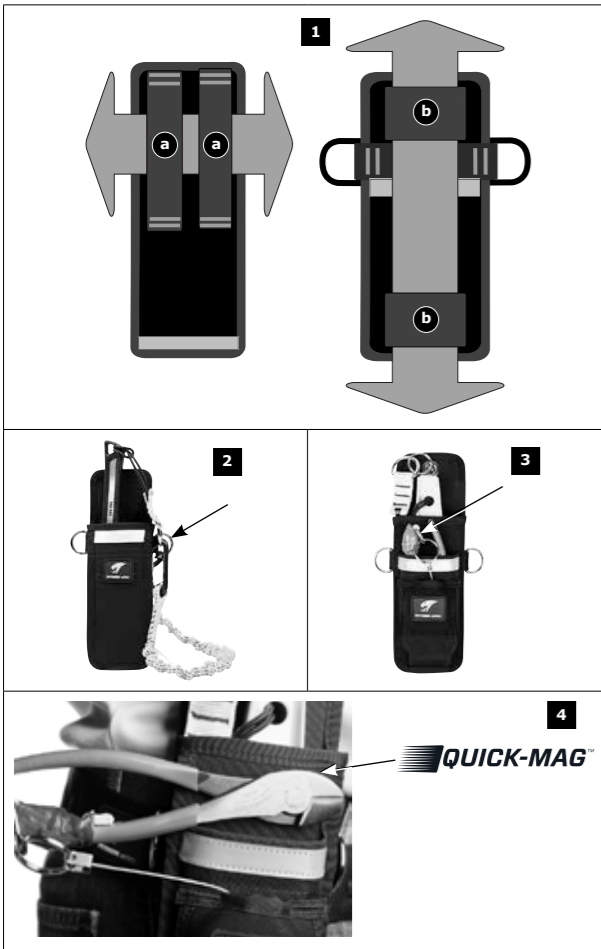
This manual is intended to be used as part of an employee training program. These products are not to be used for worker fall protection.



Model #		Retractors
1500101	Single Tool Belt Holster	None
1500102	Single Tool Belt Holster with Retractor	1
1500103	Single Tool Harness Holster	None
1500104	Single Tool Harness Holster with Retractor	1
1500105	Extra-Deep Single Tool Belt Holster	None
1500106	Dual Tool Belt Holster	None
1500107	Dual Tool Belt Holster with Retractors	2
1500108	Dual Tool Harness Holster	None
1500109	Dual Tool Harness Holster with Retractors	2

www.capitalsafety.com

Form: 5903844-A3 Rev: A © Copyright 2015, DB Industries, Inc.



EN Python Safety Tool Holsters

- Beacon™ High Visibility Reflectors on front and back.
- Quick-Mag™ holds tools in place without holstering.
- D-Rings on sides of holster are load-rated for 5 lbs (2.3kg).
- Bottom drain vent helps keep Holster interior dry.
- Some models: Neoprene pocket stores tool Retractors load-rated for 1.5 lbs (0.7 kg).

✓ When to use a Tool Holster

- For fast job site access to tools.

✗ When NOT to use a Tool Holster

- Do not use to holster tools that exceed D-Ring or Retractor load limits.

Warnings

- All warnings, warning labels and instructions should be read and understood before using this product. Failure to do so may result in property damage, serious injury or death.
- All procedures shown in this instruction are for Python Safety products only.
- Python Safety attachment points require the use of an appropriate Python Safety Lanyard, Tether or Retractor for safe connection of the tool or equipment to another Python attachment point, the user or an anchorage. See specific Python Safety instructions for product installation, connection and use procedures.
- Do not use for worker fall protection or for climbing.
- Do not use if fall protection for tool components will interfere with the safe working condition or operation of the connected tool or equipment.
- If a tool is dropped or a load is forced onto the connection point, **inspect the tool and fall protection for tool components connected to the tool for damage.** This includes the attachment point, the lanyard and the anchor point. (Anchor point examples: tool holster, tool belt, tool bag, worker safety harness or anchor point such as a rail.) Look for torn stitching and for deformities and damage to any material. If damage is found, remove the affected items from service immediately and replace them.
- Inspect before, during, and after use to ensure fall protection for tool components are in good working condition and free from defects, cuts, tears, etc. See "Inspect Before Use" in this instruction manual. Never modify Python Safety products.
- Never exceed the maximum load rating stated on the Python Safety product label.
- Never connect individual tools that weigh more than 5 pounds (2.26 kg) to a person.
- Never attach tool lanyards or attachment points to a tapered surface.
- Never wrap fall protection for tool components around rough or sharp edges.
- Never attach multiple fall protection for tool components together (daisy chain).
- Never make a modification to a connected tool or equipment that will cause it to deviate from the manufacturer's specification.
- Always use proper personal protective equipment (PPE).
- Use extreme caution while working around rotating or moving equipment.
- To avoid the danger of electrical shock, use extreme caution when working around power equipment and connections.
- Read and understand product information and warning labels for all connecting lanyards and adapters.
- All connected tools and equipment must be properly maintained and inspected for defects or deterioration before each use.

Inspect Before Use

Python Safety equipment and components must be thoroughly inspected before, during and after each use. Any fall protection for tools component that has deformities, unusual wear or deterioration must be immediately removed from service and replaced. Inspect the entire surface of the component, carefully rotating it while visually inspecting for damage or wear that might affect its usefulness and dependability. Inspect material and stitching, hardware, D-Rings and fasteners. Confirm that carabiners, trigger snaps, retractors and other connectors operate properly.

Tool Holster Use (Figures 1 - 4):

1. Depending on Tool Holster model, insert user's belt through the Holster belt loops (a), or user's harness strap through the Holster harness loops (b).
2. D-Ring attachment: Connect tool to tether (Python Bungee Tether shown, sold separately) and connect tether to D-Ring. Insert tool in Tool Holster. Tool weight must not exceed 5 lbs (2.3kg) when connected to a D-Ring.
3. Retractor attachment: Attach tool to connection point (Python D-Ring secured with Quick Wrap Tape shown, both sold separately) and attach tool connection point to Retractor ring. Insert tool in Tool Holster. Tool weight must not exceed 1.5 lbs (0.7 kg) when connected to a Retractor.
4. Quick-Mag™ magnetic tool staging system holds steel and iron tools near the top of the Tool Holster. Reduces need to insert the tool in the Holster and helps keep the tool ready for quick use.

After Use

After use, clean the Tool Holster and connected tool or equipment to remove dirt, corrosives or contaminants. Remove surface dirt with a wipe that has been moistened with a mild solution of water and soap or detergent. Work into a thick lather and clean the item. Wipe with a clean cloth and hang to dry away from excessive heat, steam, or sunlight.

Store in a clean and dry environment, free from fumes or corrosive elements. Proper care of safety equipment helps to ensure that it will operate effectively and to extend its service life.

In Case of a Dropped Tool

- If a tool is dropped or a load is forced onto the connection point, **inspect the tool and fall protection for tool components connected to the tool for damage.** This includes the attachment point, the lanyard and the anchor point. (Anchor point examples: tool holster, tool belt, tool bag, worker safety harness or anchor point such as a rail.) Look for torn stitching and for deformities and damage to any material. If damage is found, remove the affected items from service immediately and replace them.
- Incidents should be reported to your safety coordinator.

