



The Ultimate in Fall Protection

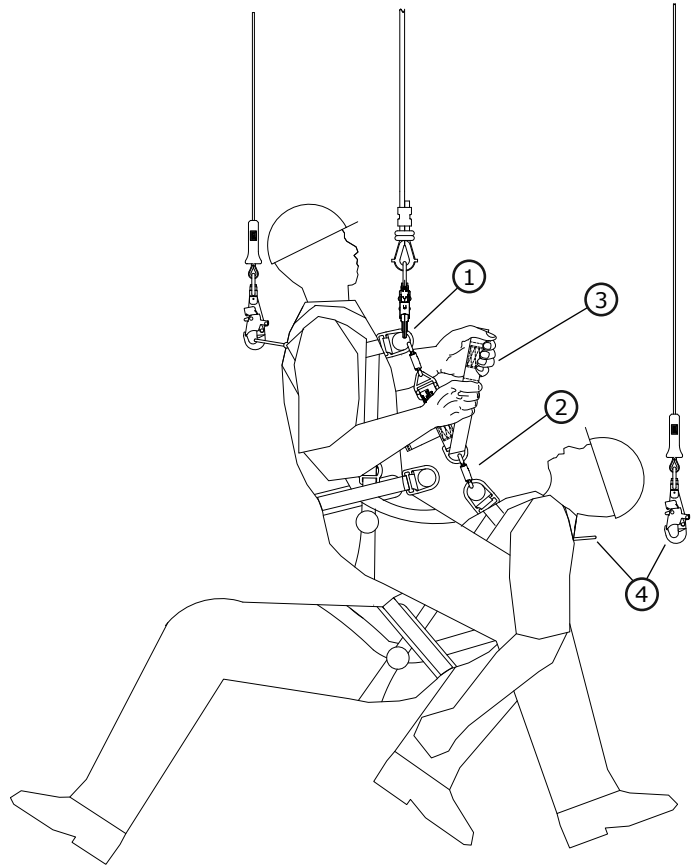
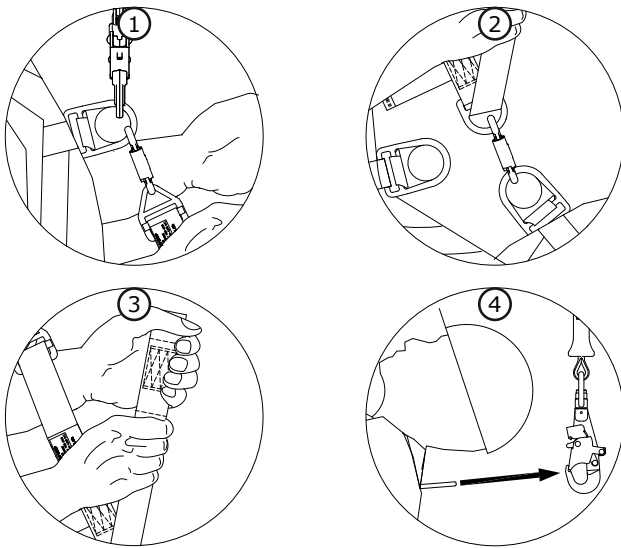
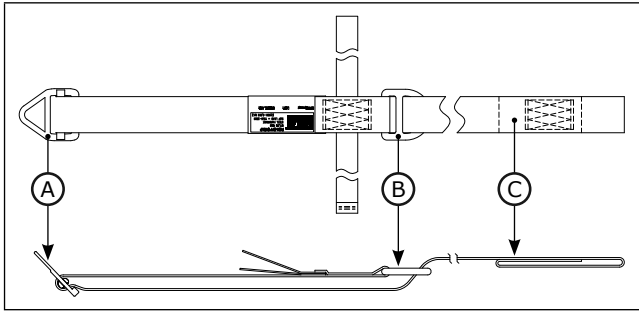
IMPORTANT: These instructions should be used as part of an employee training program as required by OSHA. Please read these instructions carefully before installing and using this product.

Rescue Pick-Off Strap

Model Number: 1200174

USER INSTRUCTION MANUAL

Figure 1 - DBI-SALA® Rescue Pick-Off Strap



DESCRIPTION: Figure 1 illustrates the Rescue Pick-Off Strap. The Pick-Off Strap is an adjustable web strap for assisted rescue applications. A V-Ring Adjuster (A) connects to the Rescuer and Rescue Device and a D-Ring (B) connects to the Victim's Harness. Once the Pick-Off Strap is connected between the Rescue System and Victim, the Rescuer can pull on a Web Loop (C) to adjust the length of the strap and release tension on the Victim's SRL or Lanyard for disconnection, allowing safe descent/ascent to a safety.

CAPACITY: The Pick-Off Strap is intended for use on a single Victim with a maximum total weight (person, clothing, tools et.) of 310 lbs (141 kg).

INSPECTION: Prior to each use, inspect the Pick-Off Strap per the instructions in the *Inspection and Maintenance Log* (Table 1). Record inspection results in the *Inspection and Maintenance Log*. If inspection reveals an unsafe or defective condition or the Pick-Off Strap has been subjected to fall forces, remove the strap from service and destroy it to eliminate the possibility of future use.

USE: Use the Pick-Off Strap in assisted rescues to safely secure the fall victim so their Fall Arrest system (SRL, Lanyard, etc.) can be disconnected to allow descent/ascent to safety (see Figure 1):

IMPORTANT: In addition to the Rescue System, Rescuers should have a backup Fall Arrest System connected to the back D-ring on their harness.

1. Connect the Rescue System Lifeline to the Chest D-Ring on your Harness. Connect a Carabiner between the Chest D-Ring on your Harness and the V-Ring Adjuster on the Pick-Off Strap. Descend/ascent to the victim.

NOTE: Fold and bind the Pick-Off Strap with the included Hook & Loop Straps to keep the D-Ring and excess strap out of the way during descent/ascent to the victim.

2. Secure the Pick-Off Strap D-Ring to the victim's Harness D-Ring (front or back) with a Locking Carabiner.
3. Insert one hand through the Web Loop on the Pick-Off Strap and pull up on the strap with both hands to position the victim and relieve tension on the victim's Fall Arrest System.
4. Disconnect the victim's Fall Arrest Lifeline or Lanyard.
5. Descend/Ascend with the victim to safety.

STORAGE: The Pick-Off Strap can be folded and bound with the included Hook & Loop Straps for storage with associated rescue equipment (harness, rope, descender, etc.). When not in use, store all rescue equipment in a cool, dry, clean environment out of direct sunlight. Avoid areas where chemical vapors may exist. Thoroughly inspect components after extended storage.

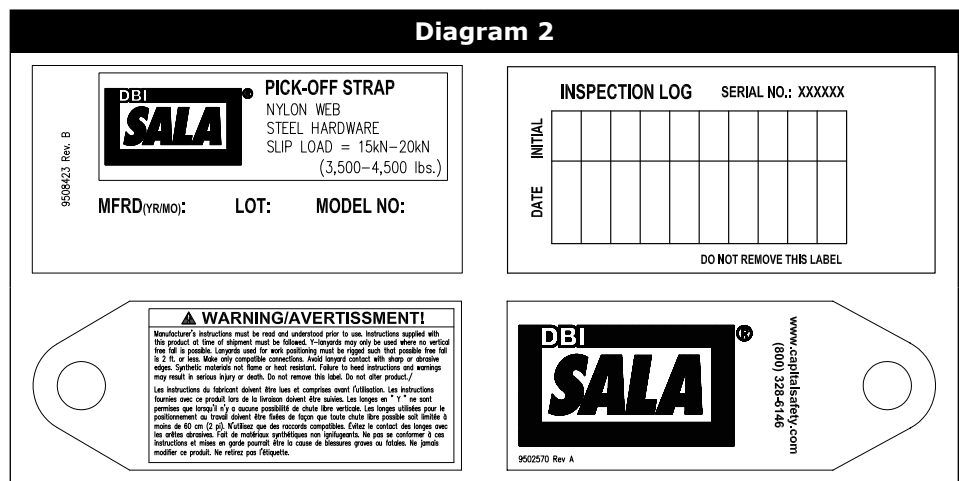
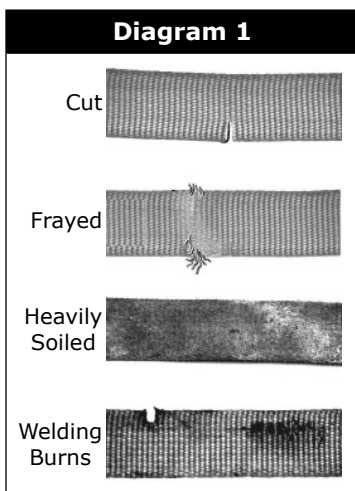
MAINTENANCE: Periodically clean The Pick-Off Strap with a soft brush, warm water, and a mild soap solution. Ensure parts are thoroughly rinsed with clean water.

REPAIR: Only Capital Safety or parties authorized in writing by Capital Safety may make repairs to this equipment. If the Pick-Off Strap has been subject to fall force or inspection reveals an unsafe or defective conditions, remove the Pick-Off Strap from service and destroy it.

IMPORTANT: Only Capital Safety or parties authorized in writing may make repairs to this equipment.

Table 1 - Inspection and Maintenance Log

Serial Number:		Date Purchased:	
Model Number:		Date of First Use:	
Inspection Date:		Inspected By:	
Components:	Inspection:	Pass	Fail
Webbing & Stitching (Diagram 1)	Inspect strap webbing for concentrated wear, frayed strands, broken yarn, burns, cuts, and abrasions. The strap must be free of knots throughout its length. Inspect for excessive soiling, paint build-up, and rust staining. Inspect for chemical or heat damage indicated by brown, discolored, or brittle areas. Inspect for ultraviolet damage indicated by discoloration and the presence of splinters and slivers on the lifeline surface. All stitching should be intact and free of any cuts or loose ends.	<input type="checkbox"/>	<input type="checkbox"/>
Connectors	Make sure the V-Ring Adjuster and D-Ring are free of corrosion, cracks, or other imperfections that may cause malfunction during operation. Adjust the strap length to ensure the V-Ring Adjuster is functioning correctly.	<input type="checkbox"/>	<input type="checkbox"/>
Labels (Diagram 2)	Verify that all labels are securely attached and are legible.	<input type="checkbox"/>	<input type="checkbox"/>



Corrective Action/Maintenance:	Approved By:
	Date:
Corrective Action/Maintenance:	Approved By:
	Date:
Corrective Action/Maintenance:	Approved By:
	Date:
Corrective Action/Maintenance:	Approved By:
	Date:
Corrective Action/Maintenance:	Approved By:
	Date:

CSG USA & Latin America
 3833 SALA Way
 Red Wing, MN 55066-5005
 Toll Free: 800.328.6146
 Phone: 651.388.8282
 Fax: 651.388.5065
 solutions@capitalsafety.com

CSG Canada
 260 Export Boulevard
 Mississauga, ON L5S 1Y9
 Phone: 905.795.9333
 Toll-Free: 800.387.7484
 Fax: 888.387.7484
 info.ca@capitalsafety.com

CSG Northern Europe
 5a Merse Road
 North Moons, Moat
 Reditch, Worcestershire, UK
 B98 9HL
 Phone: + 44 (0)1527 548 000
 Fax: + 44 (0)1527 591 000
 csgne@capitalsafety.com

CSG EMEA (Europe, Middle East, Africa)
 Le Broc Center
 Z.I. 1ère Avenue
 5600 M B.P. 15 06511
 Carros
 Le Broc Cedex
 France
 Phone: + 33 4 97 10 00 10
 Fax: + 33 4 93 08 79 70
 information@capitalsafety.com

CSG Australia & New Zealand
 95 Derby Street
 Silverwater
 Sydney NSW 2128
 AUSTRALIA
 Phone: +(61) 2 8753 7600
 Toll-Free : 1 800 245 002
 (AUS)
 Toll-Free : 0800 212 505 (NZ)
 Fax: +(61) 2 87853 7603
 sales@capitalsafety.com.au

CSG Asia Singapore:
 16S, Enterprise Road
 Singapore 627666
 Phone: +65 - 65587758
 Fax: +65 - 65587058
 inquiry@capitalsafety.com

Shanghai:
 Rm 1406, China Venturetech Plaza
 819 Nan Jing Xi Rd,
 Shanghai 200041, P R China
 Phone: +86 21 62539050
 Fax: +86 21 62539060

www.capitalsafety.com

