



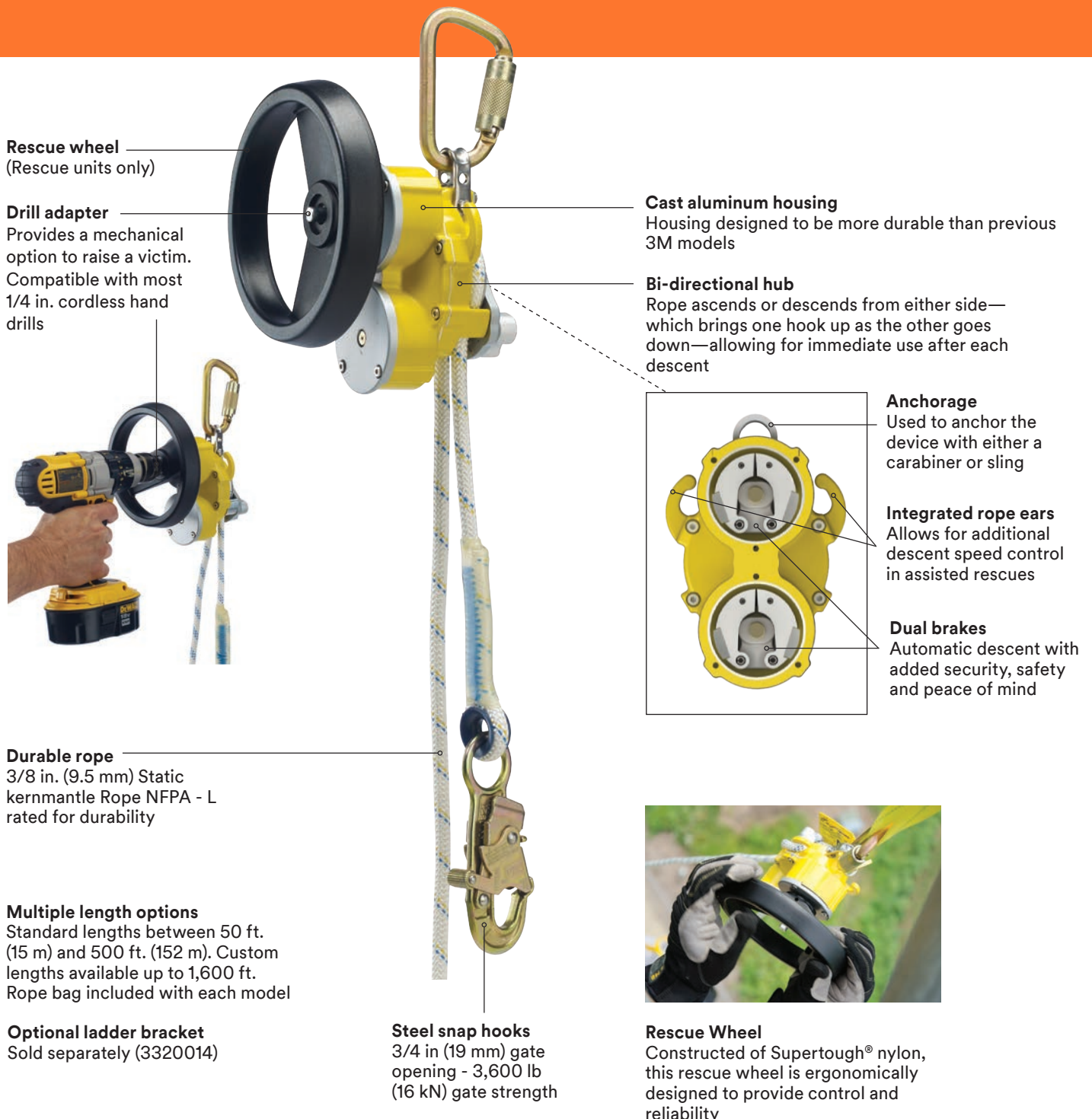
Rollgliss™ R550  
Rescue and Descent Device

Rescue and descent,  
made simple and  
**secure.**



# Designed for speed and simplicity.

A simple rescue is a safe one. That's why we created the 3M™ DBI-SALA® Rollgliss™ R550 Rescue and Descent Device. Its design offers the choice of rescue, evacuation, or the versatility of assisted rescue with lifting capabilities. From wind and cell towers, to cranes, buildings and more, count on the Rollgliss R550 for efficient, effective rescue when you need it most.



**Rescue wheel**  
(Rescue units only)

**Drill adapter**  
Provides a mechanical option to raise a victim. Compatible with most 1/4 in. cordless hand drills

**Cast aluminum housing**  
Housing designed to be more durable than previous 3M models

**Bi-directional hub**  
Rope ascends or descends from either side—which brings one hook up as the other goes down—allowing for immediate use after each descent

**Anchorage**  
Used to anchor the device with either a carabiner or sling

**Integrated rope ears**  
Allows for additional descent speed control in assisted rescues

**Dual brakes**  
Automatic descent with added security, safety and peace of mind

**Durable rope**  
3/8 in. (9.5 mm) Static kernmantle Rope NFPA - L rated for durability

**Multiple length options**  
Standard lengths between 50 ft. (15 m) and 500 ft. (152 m). Custom lengths available up to 1,600 ft. Rope bag included with each model

**Optional ladder bracket**  
Sold separately (3320014)

**Steel snap hooks**  
3/4 in (19 mm) gate opening - 3,600 lb (16 kN) gate strength

**Rescue Wheel**  
Constructed of Supertough® nylon, this rescue wheel is ergonomically designed to provide control and reliability

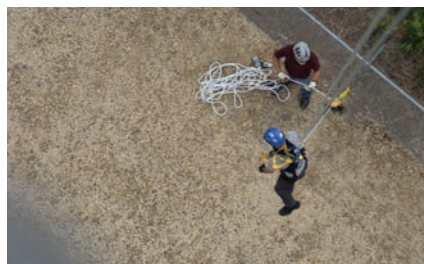
# One unit. Many possibilities.

Always refer to user manual and seek proper training before attempting rescue and descent options.



## Emergency escape

- Secure R550 to anchor point
- Connect the snap hook to dorsal or front D-ring of harness
- Descend safely to the ground



## Assisted rescue

- Secure R550 to anchor point
- Get into position above the victim
- Attach snap hook to victim
- Raise victim to unhook their fall arrest gear
- Descend victim safely to the ground



## Pick-off rescue

- Use when a victim is out of reach
- Secure R550 to anchor point and lower a second rescuer to victim
- Attach victim to rescuer
- Raise victim to unhook their fall arrest gear
- Descend both rescuer and victim to safety



## Custom rescue

- The R550 can be used for custom rescues, like an angled descent
- Secure R550 to anchor point on/near ground
- Run the rope up a pulley above the victim
- Raise victim to unhook their fall arrest gear
- Lower victim to the ground, away from structure

## Specifications:

Max. person allowed	2
Max. descent distance	18,044 ft. (5,500 m)
Factory inspection frequency (unsealed)	At least every 5 years
Factory inspection frequency (sealed)	At least every 10 years
Standards	ANSI/ASSP Z359.9-2021, CSA Z259.2.3-12
Rope material	3/8 in. (9.5 mm) Kernmantle
Snap hook material	Plated steel
Housing material	Aluminum alloy
Mechanical advantage	40:1

	1 Person	2 Person
Max. descent height	1,640 ft. (225 m) at 310 lb. (141 kg)	540 ft. (74 m) at 620 lb. (282 kg)
Max. weight allowed	310 lb. (141 kg)	620 lb. (282 kg)
Avg. descent speed	1.6 - 3.5 ft/s (depending on user weight and environmental conditions)	3.2 - 6.4 ft/s (depending on user weight and environmental conditions)
Max. hoisting capacity	310 lb. (141 kg)	N/A
Max. hoist height	330 ft. (100 m)	N/A

## Rescue units

Features a Supertough® nylon rescue wheel. Includes carabiner (2), 4 ft. (1.22 m) anchor sling and rope grab.



Part #	Length	Weight
3327025	25 ft. (8 m)	11.0 lbs. (4.99 kg)
3327050	50 ft. (15 m)	12.0 lbs. (5.42 kg)
3327075	75 ft. (23 m)	12.9 lbs. (5.85 kg)
3327100	100 ft. (30 m)	13.9 lbs. (6.28 kg)
3327125	125 ft. (38 m)	14.8 lbs. (6.71 kg)
3327150	150 ft. (46 m)	15.8 lbs. (7.14 kg)
3327175	175 ft. (53 m)	16.7 lbs. (7.58 kg)
3327200	200 ft. (61 m)	17.7 lbs. (8.01 kg)
3327250	250 ft. (76 m)	19.6 lbs. (8.87 kg)
3327275	275 ft. (84 m)	20.5 lbs. (9.30 kg)
3327300	300 ft. (91 m)	21.5 lbs. (9.73 kg)
3327325	325 ft. (99 m)	22.4 lbs. (10.2 kg)
3327350	350 ft. (107 m)	23.9 lbs. (10.8 kg)
3327375	375 ft. (114 m)	24.8 lbs. (11.3 kg)
3327400	400 ft. (122 m)	25.8 lbs. (11.7 kg)
3327450	450 ft. (137 m)	27.7 lbs. (12.5 kg)
3327500	500 ft. (152 m)	29.6 lbs. (13.4 kg)
3327550	550 ft. (168 m)	31.5 lbs. (14.3 kg)
3327600	600 ft. (183 m)	33.4 lbs. (15.1 kg)
3327700	700 ft. (213 m)	37.2 lbs. (16.8 kg)
3327800	800 ft. (244 m)	41.0 lbs. (18.6 kg)
3327900	900 ft. (274 m)	44.8 lbs. (20.3 kg)
3327051	1000 ft. (305 m)	48.6 lbs. (22.0 kg)
3327052	1100 ft. (335 m)	52.4 lbs. (23.7 kg)
3327053	1200 ft. (366 m)	56.2 lbs. (25.5 kg)
3327054	1300 ft. (396 m)	60.0 lbs. (27.2 kg)
3327055	1400 ft. (427 m)	63.8 lbs. (28.9 kg)
3327056	1500 ft. (457 m)	67.6 lbs. (30.6 kg)
3327057	1600 ft. (488 m)	71.4 lbs. (32.4 kg)



### 9508289

Fully sealed case provides 10-year minimum storage life. External humidity indicator allows user to inspect the seal without opening case.

Visit our website to learn more about our accessory products.



**3M Fall Protection Business**  
Personal Safety Division  
3833 SALA Way  
Red Wing, MN 55066 USA

**U.S.**  
Phone 800-328-6146  
Email 3mfallprotection@mmm.com  
Web 3M.com/FallProtection

## Rescue units with case

Includes edge protector, 4 ft (1.22 m) anchor sling (2), 2.5 ft. (0.76 m) anchor sling, pulley, rope grab, carabiner (3), rope bag and humidity case.

Part #	Length	Weight
3326100	100 ft. (30 m)	35.3 lbs. (16.0 kg)
3326150	150 ft. (46 m)	37.2 lbs. (16.9 kg)
3326200	200 ft. (61 m)	39.1 lbs. (17.7 kg)
3326300	300 ft. (91 m)	42.9 lbs. (19.5 kg)
3326350	350 ft. (107 m)	44.8 lbs. (20.3 kg)
3326302	361 ft. (110 m)	46.2 lbs. (20.95 kg)
3326400	400 ft. (122 m)	46.7 lbs. (21.2 kg)
3326500	500 ft. (152 m)	50.5 lbs. (22.9 kg)
3326700	700 ft. (213 m)	58.1 lbs. (26.4 kg)

## Escape units

Includes carabiner (2), 4 ft. (1.22 m) anchor sling and rope bag.



Part #	Length	Weight
3325100	100 ft. (31 m)	12.75 lbs. (5.78 kg)
3325200	200 ft. (61 m)	16.55 lbs. (7.51 kg)
3325275	275 ft. (84 m)	19.40 lbs. (8.80 kg)
3325300	300 ft. (92 m)	20.35 lbs. (9.23 kg)
3325400	400 ft. (122 m)	24.2 lbs. (11.0 kg)
3325500	500 ft. (152 m)	28.0 lbs. (12.7 kg)
3325600	600 ft. (183 m)	31.8 lbs. (14.4 kg)

## Accessories

Part #	Description
9506162	Rope bag
3320003	Edge protector with carabiner
9504733	Pulley
AC202D	Rope grab
2104523	Rescue pole
2104529	Rescue pole snap hook adapter
3320014	Ladder bracket
9508289	Humidity case
2000112	Carabiner 11/16 in. (1.75 cm) gate
2000114	Carabiner 2-3/16 in. (5.56 cm) gate

## Oil and Gas Rescue Unit

Part #	Length	Weight
3327001	200 ft. (61 m)	39.1 lbs. (17.7 kg)

9700978 Rev C

3M, DBI-SALA and Rollgliss are trademarks of 3M.  
© 3M 2022.  
Please recycle. Printed in USA.