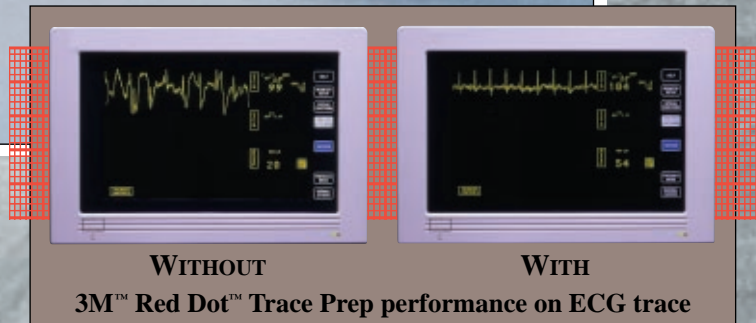


3M Red Dot Trace Prep

Clinically proven to deliver superior ECG trace quality



Product shown at actual size.



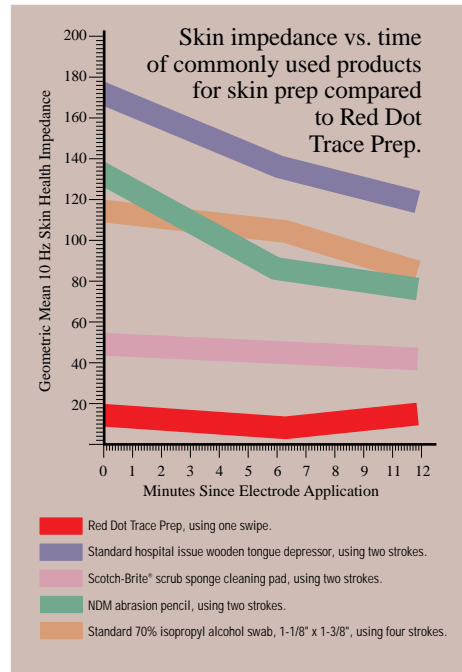
Innovative Products that Deliver Value and Superior Results

Advanced diagnostic ECG monitoring equipment demands excellent skin prep for optimal results. Virtually every ECG monitor and electrode supplier strongly recommends skin prep for optimal performance, and for good reason—it works. Removing the non-conductive skin layer with an effective skin prep will give you superior traces.

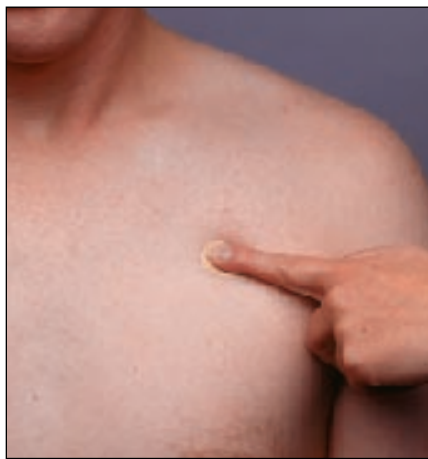


3M™ Red Dot™ Trace Prep provides a way to ensure optimum trace quality.

- Clinically proven to be the most effective skin impedance reduction tool available
- Cleaner traces mean less work for you:
 - fewer alarms
 - better diagnosis
 - less ECG paper wasted due to unnecessary print-outs
 - less nursing intervention to fix trace problems
 - fewer wasted electrodes
- Better patient skin care
 - does not harm skin or hurt patient
 - helps minimize number of electrode changes



Recommended skin preparation technique for 3M™ Red Dot™ Electrodes.



It is recommended that the skin be abraded with a “brushing” action over a fairly large area (2" x 2") rather than just a single swipe.

Apply each electrode immediately after preparing the skin on each of the application sites. This application technique, in conjunction with the “brushing” action with 3M™ Red Dot™ Trace Prep, will help to ensure that the gel portion of the electrode is placed on the site that is abraded.

1. Select electrode applications sites without bony prominences, avoiding fatty areas and major muscles.
2. Application sites with hair should be clipped or shaved.
3. Application sites must be clean and dry.
 - The preferred method for cleaning the skin is with soap and water.
 - The skin should be rubbed gently with a dry wash cloth or with gauze.
 - Cleaning with isopropyl alcohol should be avoided or limited to situations in which electrode adhesion is an issue (excessively oily or lotion-covered skin), since it may dehydrate the skin, thus causing skin impedance to rise.
 - If alcohol is used, allow it to dry prior to electrode application.
4. Attach the lead wires to electrodes prior to electrode application.
5. Application sites should then be abraded with Red Dot Trace Prep.

Dramatic effects of 3M Red Dot Trace Prep on ECG traces.

WITHOUT Red Dot Trace Prep

WITH Red Dot Trace Prep

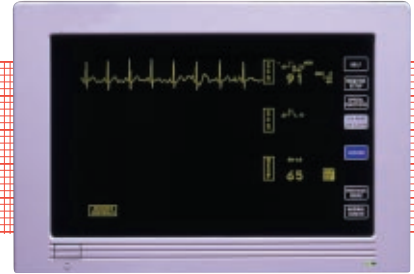
Lead Wire Movement



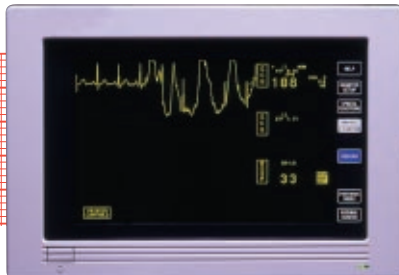
Patient Movement



Static Electricity



Pressure on Electrodes



Note: These photos are intended to show "typical" tracings for the situations indicated. Actual results may vary depending on other factors.



3M invites you to take our...



If we fail to show you a dramatic difference in traces using Red Dot Trace Prep as compared to traces without Red Dot Trace Prep, we'll provide you with a year's supply* of 3M™ Cavilon™ Durable Barrier Cream — absolutely free!

* Limit one case per facility.

Red Dot Trace Prep



Please contact me...

to schedule a demonstration on the dramatic difference Red Dot Trace Prep can provide, which includes a free trace quality educational inservice.



Please send me...

more information on the 3M Red Dot Electrode System.

Name _____ Title _____

Hospital _____ Dept. _____

Address _____ City/State _____ Zip _____

Phone Number _____ Fax Number _____

The best time to reach me is _____ Day, _____ Time.

Ordering Information

3M™ Red Dot™ Trace Prep			
Catalog No.	Description	Dispensers/Pack	Dispensers/Case
2236	18.1mm x 5m	3	36

Ask your 3M rep about the quick but dramatic demonstration that highlights the clinical value of 3M's Red Dot Trace Prep or return the postage paid appointment card.

*Also available as abrader pads on Red Dot Monitoring Electrodes.

For More Information

Contact your 3M Sales Representative, or call the 3M Health Care Customer Helpline at **1-800-228-3957**. These products can be ordered from your local distributor. Outside the United States, contact the local 3M subsidiary.

3M Alaska
11151 Calaska Circle
Anchorage, AK 99515
(907) 522-5200

3M Hawaii
Box 30048
Honolulu, HI 96820
(808) 422-2721

3M Puerto Rico
Puerto Rico Industrial Park
P.O. Box 100
Pueblo Station
Carolina, Puerto Rico
00986-0100
(787) 750-3000

3M Education Programs

Improve Your Trace Quality: A Clear Difference

This video program describes the importance of the skin prepping process and provides useful tips for solving trace quality problems.



Health Care

3M Center, Building 275-4E-01
St. Paul, MN 55144-1000
USA
1 800 228-3957

3M Canada Inc.

Post Office Box 5757
London, Ontario N6A 4T1
Canada
1 800 563-2921



40% Pre-consumer waste paper
10% Post-consumer waste paper

H.I. 4509
Printed in U.S.A.
© 3M 1998 70-2008-9852-9 (108.6) DPI



NO POSTAGE
NECESSARY
IF MAILED
IN THE
UNITED STATES

BUSINESS REPLY MAIL

FIRST-CLASS MAIL PERMIT NO. 1383 ST. PAUL, MN

POSTAGE WILL BE PAID BY ADDRESSEE

MONTAGE

2200 WEST COUNTY ROAD C
ROSEVILLE MN 55113-9629

