

# Esthetic replacement of two restorations on mandibular second molar

Clinical dentistry and photography by: Dr. Giuseppe Chiodera, Brescia, Italy

## About the Case:

Male patient, 28 years old.

The patient came to the office for a routine check-up. The mandibular second molar showed two insufficient fillings (occlusal and buccal) with secondary caries, open margins and occlusal wear.

Both restorations needed to be replaced. The patient opted for an esthetic, multi-layer composite restoration for a natural looking outcome.

## Challenge:

Poor accessibility and visibility of this restoration lead to a variety of clinical challenges such as composite placement and proper light curing.

## Step-by-Step:



Fig. 1: Initial situation: mandibular second molar with restorations require replacement.



Fig. 2: After placement of rubber dam the insufficient fillings were completely removed.



Fig. 3: After selective enamel etching, Single Bond Universal Adhesive was applied.

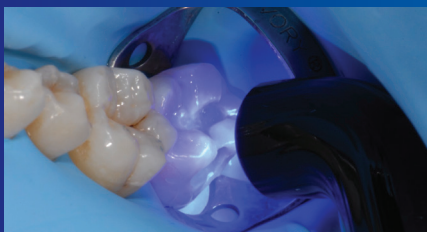


Fig. 4: Adhesive was cured for 10 seconds with Elipar™ DeepCure-S LED Curing Light after scrubbing and air drying steps were completed.



Fig. 5: Filtek™ Z350 XT Flowable Restorative, shade A3 was used as a liner for easy adaptation.



Fig. 6: Dentin was replaced with incremental placement and curing of Filtek™ Z350 XT Universal Restorative, shade A3B.

# Esthetic replacement of two restorations on mandibular second molar (continued)



Fig. 7: Enamel was replaced with Filtek™ Z350 XT Universal Restorative, shade A3E and light cured. Stains were applied in the fissure.

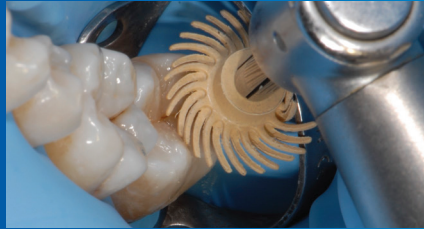


Fig. 8: The initial finishing was completed with Sof-Lex™ Discs, followed by pre-polishing with Sof-Lex™ Pre-Polishing Spiral.



Fig. 9: After pre-polishing was complete, the restoration was brought to a high gloss polish with Sof-Lex™ Diamond Polishing Spiral.



Fig. 10: Final restorations with an excellent esthetic appearance.

## The 3M Difference:

The esthetic result of the restoration doesn't have to be compromised by case challenges. Save steps and time — with our high performance system that's as simple as it is effective.

Refer to Instructions for Use (IFU) for complete product information.

# 3M

3M Oral Care  
2510 Conway Avenue  
St. Paul, MN 55144-1000 USA

Phone 1-800-634-2249  
Web [3M.com/dental](http://3M.com/dental)

3M Deutschland GmbH  
Location Seefeld  
3M ESPE · ESPE Platz  
82229 Seefeld · Germany  
[info3mespe@mmm.com](mailto:info3mespe@mmm.com)  
[www.3MESPE.com](http://www.3MESPE.com)

3M, 3M Science. Applied to Life., Elipar, Filtek and Sof-Lex are trademarks of 3M Company. Used under licence in Canada. All other trademarks are owned by other companies. Please recycle. Printed in U.S.A. © 3M 2016. All rights reserved.