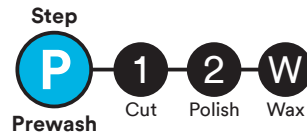


## 3M™ Perfect-It™ Boat Wash



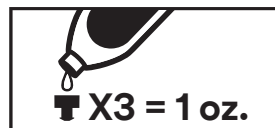
### DIRECTIONS FOR USE



1. Pour one ounce of Perfect-It™ Boat Wash per gallon of water into a bucket.
2. Apply solution with a soft sponge or soft bristle brush until debris is removed from the surface.
3. Wash the residual boat soap off of the boat surface with a consistent flow of water, completely removing boat soap from the boat.
4. Wipe the boat dry with a clean soft terry cloth/towel, a microfiber detailing cloth or a chamois.

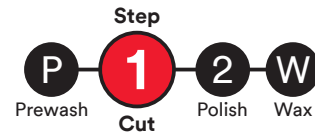
### DIRECTIONS FOR DILUTION

\* Three full caps of wash equals 1 oz.



**Note:** Do not apply undiluted concentrate to the boat.

## 3M™ Perfect-It™ Gelcoat Heavy Cutting Compound

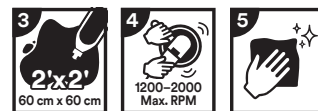


### DIRECTIONS FOR USE



1. Prior to compounding, wash surface using 3M™ Perfect-It™ Boat Wash (PN 09035).
2. Shake this product well before using.

### DIRECTIONS FOR USE BY MACHINE



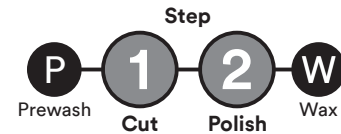
3. Apply enough material to work a 2' x 2' area with a thin film throughout the buffing process. **Important:** If too much compound is applied to the surface, product may create a heavy film that reduces workability. If this occurs, remove excess material from both panel and pad surfaces. Spur buffing pad as necessary.
4. Start buffing with medium pressure between 1200 – 2000 Max. RPM. For optimal finish, as the product begins to dry, reduce pressure at end of buffing cycle. Product can be buffed or wiped dry.
5. Use a soft cloth to remove any residual film and/or sling before moving on to another panel or before polishing.

**Optional:** On dark colored surfaces further refine surface with 3M™ Marine Finesse-It™ II Glaze.

**For added protection** apply 3M™ Perfect-It™ Boat Wax (PN 36113) after compounding is completed.

**Note:** Do not apply to a warm surface or in direct sunlight. Do not dilute. Follow gelcoat manufacturer recommendations for application and curing. Gelcoat age and condition will affect refinishing methods.

## 3M™ Perfect-It™ Gelcoat Compound + Polish

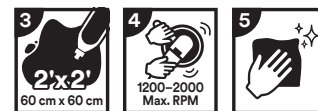


### DIRECTIONS FOR USE



1. Prior to compounding, wash surface using 3M™ Perfect-It™ Boat Wash (PN 09035).
2. Shake this product well before using.

### DIRECTIONS FOR USE BY MACHINE

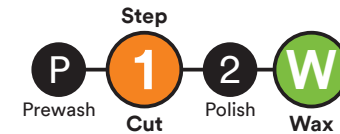


3. Apply enough material to work a 2' x 2' area with a thin film throughout the buffing process. **Important:** If too much compound is applied to the surface, product may create a heavy film that reduces workability. If this occurs, remove excess material from both panel and pad surfaces. Spur buffing pad as necessary.
4. Start buffing with medium pressure between 1200 – 2000 Max. RPM. For optimal finish, as the product begins to dry, reduce pressure at end of buffing cycle. Product can be buffed or wiped dry.
5. Use a soft cloth to remove any residual film and/or sling before moving on to another panel or before polishing.

**Note:** Do not apply to a warm surface or in direct sunlight. Do not dilute. Follow gelcoat manufacturer recommendations for application and curing. Gelcoat age and condition will affect refinishing methods.

**PROTECT FROM FREEZING.**

## 3M™ Perfect-It™ Gelcoat Medium Cutting Compound + Wax

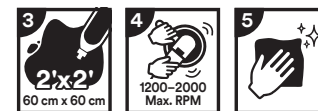


### DIRECTIONS FOR USE



1. Prior to compounding, wash surface using 3M™ Perfect-It™ Boat Wash (PN 09035).
2. Shake this product well before using.

### DIRECTIONS FOR USE BY MACHINE



3. Apply enough material to work a 2' x 2' area with a thin film throughout the buffing process. **Important:** If too much compound is applied to the surface, product may create a heavy film that reduces workability. If this occurs, remove excess material from both panel and pad surfaces. Spur buffing pad as necessary.
4. Start buffing with medium pressure between 1200 – 2000 Max. RPM. For optimal finish, as the product begins to dry, reduce pressure at end of buffing cycle. Product can be buffed or wiped dry.
5. Use a soft cloth to remove any residual film and/or sling before moving on to another panel.

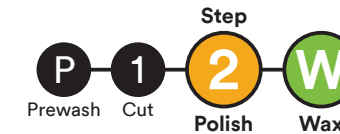
### DIRECTIONS FOR USE BY HAND



3. Apply material to a 1' x 1' area using a clean microfiber detailing cloth.
4. Rub gelcoat surface in a circular motion.
5. Work the area until the material is gone. Do not allow product to haze. **Heavily oxidized surfaces** may require application by machine.

**Note:** Do not apply in direct sunlight or on a warm surface. Do not dilute. Remove material sling as soon as possible using a soft damp microfiber detail cloth. Follow gelcoat manufacturer recommendation for application and curing. Gelcoat age and condition will affect finishing methods.

## 3M™ Perfect-It™ Gelcoat Light Cutting Polish + Wax



### DIRECTIONS FOR USE



1. Prior to polishing, wash surface using 3M™ Perfect-It™ Boat Wash (PN 09035).
2. Shake this product well before using.

### DIRECTIONS FOR USE BY MACHINE



3. Apply enough material to work a 2' x 2' area with a thin film throughout the buffing process. **Important:** If too much polish is applied to the surface, product may create a heavy film that reduces workability. If this occurs, remove excess material from both panel and pad surfaces. Spur buffing pad as necessary.
4. Start buffing with medium pressure between 1200 – 2000 Max. RPM. For optimal finish, as the product begins to dry, reduce pressure at end of buffing cycle. Product can be buffed or wiped dry.
5. Use a soft cloth to remove any residual film and/or sling before moving on to another panel.

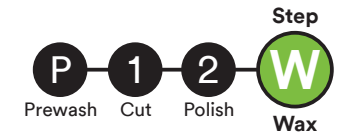
### DIRECTIONS FOR USE BY HAND



3. Apply material to a 1' x 1' area using a clean microfiber detailing cloth.
4. Rub gelcoat surface in a circular motion.
5. Work the area until the material is gone. Do not allow product to haze. **Heavily oxidized surfaces** may require application by machine.

**Note:** Do not apply in direct sunlight or on a warm surface. Do not dilute. Remove polish sling as soon as possible using a soft damp microfiber detail cloth. Follow gelcoat manufacturer recommendation for application and curing. Gelcoat age and condition will affect finishing methods.

## 3M™ Perfect-It™ Boat Wax



### DIRECTIONS FOR USE



1. Prior to waxing, wash boat using 3M™ Perfect-It™ Boat Wash (PN 09035).
2. Shake this product well before using.

### DIRECTIONS FOR USE BY MACHINE



3. Apply enough material to work a 2' x 2' area.
4. Spread the material with the buffing pad to reduce slinging.
5. Using light pressure, evenly apply wax to the surface of the boat using a 50% overlap. Do not allow wax to haze.
6. Wipe off excess wax with a clean dry microfiber detailing cloth.

### DIRECTIONS FOR USE BY HAND



3. Apply enough material to work a 2' x 2' area. Apply product with a clean dry microfiber detailing cloth.
4. Rub thoroughly onto the surface of the boat. Do not allow wax to haze.
5. Wipe off excess wax with a new clean dry microfiber detailing cloth.

**Note:** Do not use in direct sunlight or apply to a warm surface. Do not use on vinyl or rubber areas. Do not dilute. Follow gelcoat manufacturer recommendation for application and curing. Age and condition of gelcoat will affect finishing methods.



**Automotive Aftermarket Division**  
**3M Center, Building 223-6S-07**  
**St. Paul, MN 55144-1000**

**Phone 1-877-666-2277**  
**Web 3MMarine.com**

**Product Selection and Use:** Many factors beyond 3M's control and uniquely within user's knowledge and control can affect the use and performance of a 3M product in a particular application. As a result, customer is solely responsible for evaluating the product and determining whether it is appropriate and suitable for customer's application, including conducting a workplace hazard assessment and reviewing all applicable regulations and standards (e.g., OSHA, ANSI, etc.). Failure to properly evaluate, select, and use a 3M product in accordance with all applicable instructions and with appropriate safety equipment, or to meet all applicable safety regulations, may result in injury, sickness, death, and/or harm to property.

**Warranty, Limited Remedy, and Disclaimer:** Unless a different warranty is specifically stated on the applicable 3M product packaging or product literature (in which case such warranty governs), 3M warrants that each 3M product meets the applicable 3M product specification at the time 3M ships the product. 3M MAKES NO OTHER WARRANTIES OR CONDITIONS, EXPRESS OR IMPLIED, INCLUDING, BUT NOT LIMITED TO, ANY IMPLIED WARRANTY OR CONDITION OF MERCHANTABILITY, FITNESS FOR A PARTICULAR PURPOSE, OR ARISING OUT OF A COURSE OF DEALING, CUSTOM, OR USAGE OF TRADE. If a 3M product does not conform to this warranty, then the sole and exclusive remedy is, at 3M's option, replacement or repair of the 3M product or refund of the purchase price. Warranty claims must be made within one (1) year from the date of 3M's shipment.

**Limitation of Liability:** Except for the limited remedy stated above, and except to the extent prohibited by applicable law, 3M will not be liable for any loss or damage arising from or related to the 3M product, whether direct, indirect, special, incidental, or consequential (including, but not limited to, lost profits or business opportunity), regardless of the legal or equitable theory asserted, including, but not limited to, warranty, contract, negligence, or strict liability.

**Disclaimer:** 3M industrial and occupational products are intended, labeled, and packaged for sale to trained industrial and occupational customers for workplace use. Unless specifically stated otherwise on the applicable product packaging or literature, these products are not intended, labeled, or packaged for sale to or use by consumers (e.g., for home, personal, primary or secondary school, recreational/sporting, or other uses not described in the applicable product packaging or literature), and must be selected and used in compliance with applicable health and safety regulations and standards (e.g., U.S. OSHA, ANSI), as well as all product literature, user instructions, warnings, and limitations, and the user must take any action required under any recall, field action or other product use notice. Misuse of 3M industrial and occupational products may result in injury, sickness, or death. For help with product selection and use, consult your on-site safety professional, industrial hygienist, or other subject matter expert. For additional product information, visit 3M.com.