

**3M** Science.  
Applied to Life.™

Safety Series

## Strengthen your glass even on a budget with 3M™ Safety & Security Window Film.

- ▶ Engineered to help hold broken glass in place
- ▶ Helps prevent flying glass shards from harming occupants and damaging property
- ▶ Blocks up to 99% of the sun's harmful UV rays, the largest single cause of fading
- ▶ Products must be installed with the 3M™ Impact Protection Attachment (IPA) Sealant for all break & entry and for all spontaneous glass breakage applications on single pane tempered glass (product is not bulletproof and is not designed to stop intruders)
- ▶ Optically clear
- ▶ For application only to interior glass surfaces of windows and doors
- ▶ Comprehensive warranty by 3M

	S40	S70	S80	S140
Break and Entry		★★	★★	★★★★★
Safety Glazing	★★★	★★★★★	★★★★★	★★★★★
Seismic	★★★★★	★★★★★	★★★★★	★★★★★
Anti-Graffiti	★★	★★★	★★★	★★★★

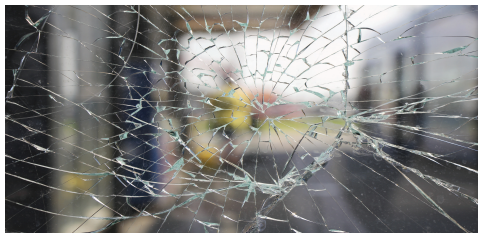
Best ★★★★★  
Better ★★★★★  
Good ★★★  
Fair ★★

*Ratings in comparison to other 3M™ Safety & Security Window Films.*

We recommend that you consult with an authorized 3M Window Film Dealer along with your architect, building contractor, and/or security professional to determine if these films or other 3M film solutions can help meet your security needs.

Valued  
Associations  
and Alliances:



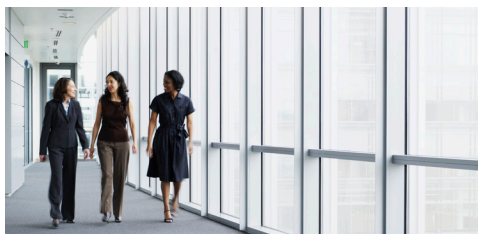


### Break and Entry

- ▶ Application applicable for S70, S80, and S140 and must be combined with 3M™ Impact Protection Attachment (IPA) Sealant
- ▶ Help delay intruders and help provide extra response time by slowing the intruder down.

#### Performance Testing

- ▶ 3M proprietary tests

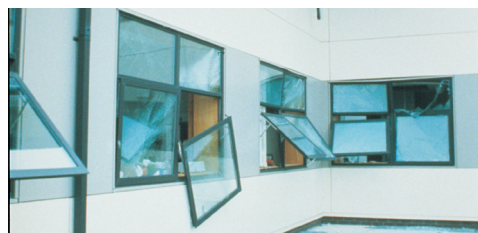


### Safety Glazing

- ▶ Can be used in certain instances to help upgrade facilities to building codes
- ▶ Help prevent flying shards of glass from harming building occupants or damaging property

#### Performance Testing

- ▶ ANSI Z97.1
- ▶ EN 12600



### Seismic and Spontaneous Glass Breakage

- ▶ Help retain the broken glass within the frame and help prevent glass fragments from falling from windows, balconies and guardrails

#### Performance Testing

- ▶ ANSI Z97.1
- ▶ EN 12600

## Film Properties (nominal) — not for specification purposes

Film Type	Film Thickness	Construction	Tensile Strength	Break Strength	Elongation at Break	Peel Strength	Abrasion Resistance
Safety S40	4 mil (0.10mm)	Single ply	25,000 psi (172 MPa)	100 lbs/in (445 N / 25mm)	>125%	> 4 lbs/in (18 N / 25mm)	<5%
Safety S70	7 mil (0.18mm)	Single ply	25,000 psi (172 MPa)	175 lbs/in (778 N / 25mm)	>125%	> 5 lbs/in (22 N / 25mm)	<5%
Safety S80	8 mil (0.20mm)	2-ply	25,000 psi (172 MPa)	200 lbs/in (890 N / 25mm)	>125%	> 2 lbs/in (9 N / 25mm)	<5%
Safety S140	14 mil (0.36mm)	3-ply	25,000 psi (172 MPa)	350 lbs/in (1,557 N / 25mm)	>125%	> 2 lbs/in (9 N / 25mm)	<5%

**IMPORTANT:** This is an overview of product features and benefits. Prior to product selection, always refer to the current 3M Technical Data Sheet and 3M Technical Specifications for more detailed product information.

**IMPORTANT PRODUCT AND APPLICATION LIMITATIONS:** Many factors can contribute to potential hazards and damages arising from wind, impact, seismic, explosion, or break and entry incidents, including the window film selected, type and thickness of glass, building construction, exterior pressure, proximity of impact occurrence, quality of window or door frames, intruder size and strength, and type of tools used to gain entry. Certain 3M™ Window Films require the use of 3M™ Impact Protection Attachment (IPA) Sealant on glass window and door frames for windstorm, break & entry, and explosion mitigation applications and for spontaneous glass breakage applications on single pane tempered glass. The sealant may also be recommended for certain other spontaneous glass breakage, safety glazing, and seismic applications. Always refer to the 3M Technical Data Sheets and 3M Technical Specifications to determine whether these combinations are required. **CAUTION:** While 3M™ Window Films, when applied in accordance with 3M instructions, may help reduce the impact of flying glass shards under certain conditions and potentially delay intruders, these films do not prevent property damage, personal injury, or death. **CAUTION:** Window films are not bulletproof and not designed to stop intruders. Always consult with security professionals and a 3M Authorized Window Film Dealer prior to selecting any window films to determine suitability for the intended application.

**IMPORTANT STATE OF FLORIDA NOTICE:** This product is not approved in the State of Florida for use as hurricane, windstorm, or impact protection from wind-borne debris from a hurricane or windstorm. In compliance with Florida Statute 553.842, this product may not be advertised, sold, offered, provided, distributed, or marketed in the State of Florida as hurricane, windstorm, or impact protection from wind-borne debris from a hurricane or windstorm.

**Warranty, Limited Remedy, and Disclaimer:** Please refer to the Warranty Bulletin for 3M™ Window Films (Flat Glass Applications) and 3M™ Impact Protection Attachment (IPA) Sealant for complete details on warranty coverage, which can be obtained by contacting your 3M Authorized Window Film Dealer or your local 3M sales representative. If a 3M product does not conform to the warranties described in this Warranty Bulletin, the sole and exclusive remedy is, at 3M's option, replacement of the 3M product or refund of the purchase price. Except to the extent prohibited by law, 3M will not be liable for any loss or damage arising from or related to the 3M product, whether direct, indirect, special, incidental, or consequential (including, but not limited to, lost profits or business opportunity), regardless of the legal or equitable theory asserted, including, but not limited to, warranty, contract, negligence, or strict liability.

