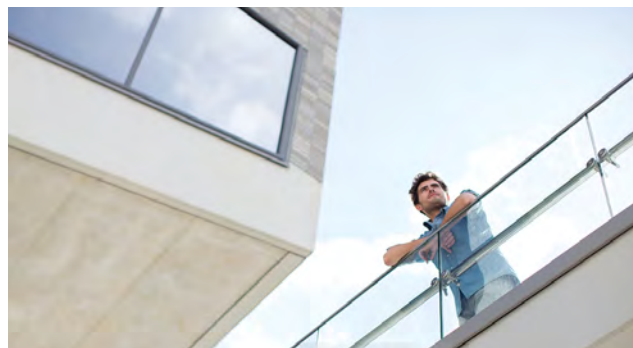


3M™ Safety & Security Window Film — glass solutions you and your tenants can count on.

- ▶ Designed for both exterior and interior applications
- ▶ Exterior weatherability
- ▶ Helps prevent flying glass shards in the following applications
 - Spontaneous glass breakage
 - Break and Entry Incidents
 - Seismic Events
 - Exterior-facing glass retention (e.g., balcony glass, balustrades, skylights, outer pane of insulated glass units (IGU), curtain walls)
- ▶ Helps delay intruders in break and entry incidents (Only if used with interior 3M™ Safety & Security Window Films combined with 3M™ Impact Protection Attachment (IPA) Sealant)
- ▶ Helps meet many industry performance standards for glass fragment retention
- ▶ Blocks up to 99% of the sun's UV rays, the largest single cause of fading
- ▶ Products must be installed with the 3M™ Impact Protection Attachment (IPA) Sealant for all windstorm, break & entry, and explosion mitigation applications and for all spontaneous glass breakage applications on single pane tempered glass (product is not bulletproof and is not designed to stop intruders)
- ▶ Comprehensive warranty by 3M

	S40X	S70X
Exterior Use	★★★★★	★★★★★
Spontaneous Glass Breakage	★★★★★	★★★★★
Seismic	★★★★★	★★★★★
Safety Glazing		★★★
Best	★★★★★	
Better	★★★★	
Good	★★★	
Fair	★★	

Ratings in comparison to other 3M™ Safety Window Films.





Exterior Window Film

- ▶ 3M's extensive weathering knowledge and technical innovations enable durable exterior films

Common Installations

- ▶ Balcony glass
- ▶ Balustrades
- ▶ Skylights
- ▶ Outer pane of insulated glass units (IGU)
- ▶ Curtain walls



Seismic and Spontaneous Glass Breakage

- ▶ Help retain the broken glass within the frame and help prevent glass fragments from falling from windows, balconies and guardrails

Performance Testing

- ▶ ANSI Z97.1
- ▶ EN 12600
- ▶ JIS A5759



Safety Glazing

- ▶ Helps meet many industry performance standards for glass fragment retention
- ▶ Helps prevent flying glass shards from harming occupants and damaging property

Performance Testing (S70X)

- ▶ ANSI Z97.1
- ▶ EN 12600
- ▶ JIS A5759

Film Properties (nominal) — not for specification purposes

Film Type	Film Thickness	Construction	Tensile Strength	Break Strength	Elongation at Break	Peel Strength	Abrasion Resistance
Safety S40X	4 mil (0.1mm)	Single ply	25,000 psi (172 MPa)	100 lbs/in (445 N/25mm)	>115%	>5 lbs/in (22 N/25mm)	5%
Safety S70X	7 mil (0.18mm)	Single ply	25,000 psi (172 MPa)	178 lbs/in (792 N/25mm)	>150%	>5 lbs/in (22 N/25mm)	5%

IMPORTANT: This is an overview of product features. References to explosions or blasts apply only to commercial and non-educational government facility applications. Prior to product selection, always refer to the current 3M Technical Data Sheet for detailed product information.

CAUTION: While 3M Window Films, when applied in accordance with 3M instructions, may help reduce the impact of flying glass shards under certain conditions and potentially delay intruders, **THESE FILMS DO NOT PREVENT PROPERTY DAMAGE, PERSONAL INJURY, OR DEATH. WINDOW FILMS ARE NOT BULLETPROOF AND NOT DESIGNED TO STOP INTRUDERS.**

IMPORTANT PRODUCT AND APPLICATION LIMITATIONS: Many factors can contribute to potential hazards and damages arising from wind, impact, seismic, explosion, or break and entry incidents, including the window film selected, type and thickness of glass, building construction, exterior pressure, proximity of impact occurrence, quality of window or door frames, intruder size and strength, and type of tools used to gain entry. Certain 3M™ Window Films require the use of 3M™ Impact Protection Attachment (IPA) Sealant on glass window and door frames for windstorm, break & entry, and explosion mitigation applications and for spontaneous glass breakage applications on single pane tempered glass. The sealant may also be recommended for certain other spontaneous glass breakage, safety glazing, and seismic applications. Always refer to the 3M Technical Data Sheets and 3M Technical Specifications to determine whether these combinations are required. **Always consult with security professionals and a 3M Authorized Window Film Dealer prior to selecting any window films to determine suitability for the intended application.**

IMPORTANT STATE OF FLORIDA NOTICE: This product is not approved in the State of Florida for use as hurricane, windstorm, or impact protection from wind-borne debris from a hurricane or windstorm. In compliance with Florida Statute 553.842, this product may not be advertised, sold, offered, provided, distributed, or marketed in the State of Florida as hurricane, windstorm, or impact protection from wind-borne debris from a hurricane or windstorm.

Warranty, Limited Remedy, and Disclaimer: Please refer to the Warranty Bulletin for 3M™ Window Films (Flat Glass Applications) and 3M™ Impact Protection Attachment (IPA) Sealant for complete details on warranty coverage, which can be obtained by contacting your 3M Authorized Window Film Dealer or your local 3M sales representative. If a 3M product does not conform to the warranties described in this Warranty Bulletin, the sole and exclusive remedy is, at 3M's option, replacement of the 3M product or refund of the purchase price. Except to the extent prohibited by law, 3M will not be liable for any loss or damage arising from or related to the 3M product, whether direct, indirect, special, incidental, or consequential (including, but not limited to, lost profits or business opportunity), regardless of the legal or equitable theory asserted, including, but not limited to, warranty, contract, negligence, or strict liability.



3M Commercial Branding & Transportation
 3M Center, Building 223-3N-30
 St. Paul, MN 55144-1000
3M.com/windowfilm

3M is a trademark of 3M Company.
 Used under license by 3M subsidiaries and affiliates.

Please recycle.
 © 3M 2025. All rights reserved.
 98-0150-0737-4