

# Competitive Product and Procedure Comparison

## 3M™ RelyX™ Fiber Post 3D Glass Fiber Post

Offered by 3M



## FibreKleer™ 4X™ Tapered Glass Fiber Post

Offered by Pentron Clinical



### Summary – Advantages of 3M Solution over Pentron Clinical

- Faster and simpler 3M post and core solution with proven products (Fig. 1)
- Reliable post and core build-up procedure with fewer clinical steps and fewer products (Fig. 1)
- Easier cementation with 3M™ RelyX™ Unicem 2 Automix Cement: no post silanating, no root canal conditioning, no application of cement to post, no lentulo usage (endo tip application of RelyX Unicem 2 Automix enables a virtually void-free cementation (Fig 1.))
- Easier bonding with 3M™ Scotchbond™ Universal Adhesive for the core build-up: No etching or priming (Fig. 1)

### 3M post and core solution compared to Pentron Clinical

	Post cementation						Core build-up					
	Apply etching gel	Apply primer	Mix adhesive	Apply adhesive	Condition post	Apply cement	Place post and cure	Apply etching gel	Apply primer	Mix adhesive	Apply adhesive	Core build-up
3M	-	-	-	-	-			-	-	-		
Pentron	-	-	-	-	-			-	-	-		

Fig. 1: Less components and steps compared to Pentron System Solution. Source: Steps according to instructions for use of FibreKleer™ 4X™ Tapered and 3M™ RelyX™ Fiber Post 3D.

### RelyX Fiber Post 3D – Major features

- No pre-treatment of the post needed due to the micro-porosity at the surface (Fig. 2)
- Integrated 3D macro retention in the coronal part for a high bond strength to the core build-up (Fig. 3)
- Excellent radiopacity for better post position control (Fig. 4)

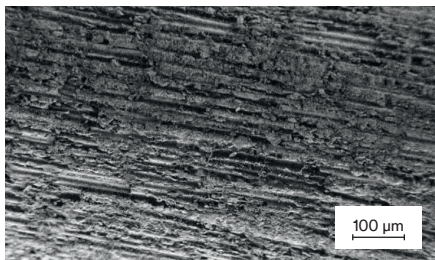


Fig. 2: Surface (SEM, 200x magnification) of 3M™ RelyX™ Fiber Post 3D.

Source: R. Peez, R. Hampe, S. Hader, E. Popp, J. Edgington: Evaluation of a New Cement Post and Core Procedure System, J Dent Res 94 (Spec Iss A): 0105, 2015, (www.dentalresearch.org)

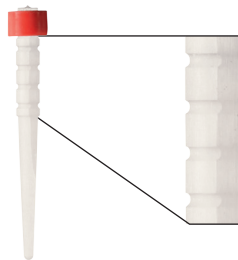


Fig. 3: The coronal macro retention of 3M™ RelyX™ Fiber Post 3D give a high and secure mechanical retention to the core build-up material, immediate depth control and guidance for post shortening.

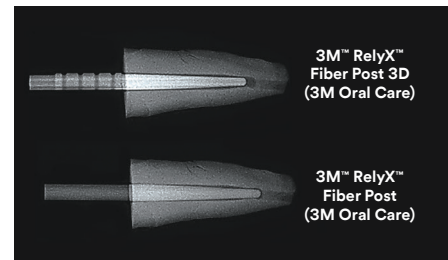


Fig. 4: Comparative radiography of both posts. Source: THE DENTAL ADVISOR, Research Report Number 70 – June 2015

## RelyX™ Fiber Post 3D Glass Fiber Post

Offered by 3M



## FibreKleer™ 4X™ Tapered Glass Fiber Post

Offered by Pentron Clinical\*



### Product description and benefits:

(As stated by the manufacturer)

Glass fiber reinforced composite post with uniquely designed coronal macro-retention. Embedded in a fast and simple 3M post and core solution for a secure bond from root to core.

FibreKleer 4X Fiber Posts feature outstanding radiopacity of up to 400% of aluminum to help ensure that they are instantaneously identified on a radiograph at placement as well as at follow up appointments.

### Cement



#### 3M™ RelyX™ Unicem 2 Automix Cement

- Self-adhesive universal resin cement, no need for etching, priming and bonding
- Reduces significant number of steps
- Endo tip allows easy and virtually void-free application
- Delivers reliable and strong bond of post to root canal

#### Breeze™ Cement

- Self-adhesive resin cement
- Procedure time is reduced, due to eliminating the etching, priming and bonding steps
- Exceptional bond strength
- Contains fluoride

### Post



#### 3M™ RelyX™ Fiber Post 3D

- High mechanical retention to core due to coronal macro retention
- Secure bond in the root canal due to superficial micro-porosity
- High radiopacity
- Dentin-like elasticity to avoid root fracture
- Esthetic alternative to metal posts
- The flattened coronal macro retention offer a safe grip with the tweezer

#### FibreKleer™ 4X™ Tapered

- Radiopacity up to 400% of Al – post is clearly identified on a radiograph
- Mimics properties of the root – ideal flexural modulus properties help minimize root fractures
- Translucent glass fibers

### Adhesive



#### 3M™ Scotchbond™ Universal Adhesive

- Light-curing, self-adhesive
- Reliable and strong bond to root and core
- Bonds to all surfaces including enamel, dentin, glass ceramic, zirconia, noble and non-precious alloys, and composites – without additional primer
- One application of adhesive sufficient (no etching or priming)
- Combined total-etch, self-etch and selective-etch adhesive

#### Bond-1® Primer/Adhesive

- Dual-curing
- High bond strengths
- Bonds to virtually all direct and indirect restorations
- Film thickness of only 8 microns

### Core build-up



#### 3M™ Filtek™ One Bulk Fill Restorative

- Improved opacity and esthetics
- Excellent cavity adaptation
- One-step placement up to 5 mm
- Excellent handling and sculptability
- Excellent wear resistance and polish retention
- High radiopacity

#### Build-It™ FR Fiber Reinforced Core Material

- Fiber reinforced dual-cure resin composite
- Radiopaque
- Available in 5 shades: A2, A3 and Opaque White for cosmetic restorations and Gold and Blue for margin definition

### How it works

- Clean RelyX Fiber Post 3D with alcohol
- Apply RelyX Unicem 2 Automix Cement into root canal
- Insert post into root canal
- Apply Scotchbond Universal Adhesive to the coronal part of post and tooth
- Build-up core with Filtek One Bulk Fill Restorative

- Clean post with alcohol
- Apply Bond-1® Primer/Adhesive into root canal
- Coat the post with cement
- Apply cement into root canal
- Insert post into root canal
- Apply etch gel to tooth
- Apply Bond-1® Primer/Adhesive to tooth
- Build-up core with Build-It FR Fiber Reinforced Core Material



\*Information obtained from <http://www.pentron.com/index.php/products>

**3M Oral Care**  
2510 Conway Avenue  
St. Paul, MN 55144-1000  
USA  
1-800-634-2249

**3M Canada**  
Post Office Box 5757  
London, Ontario N6A 4T1  
Canada  
1-888-363-3685

### 3M.com/dental

3M, ESPE, Filtek, RelyX and Scotchbond are trademarks of 3M Company or 3M Deutschland GmbH. Used under license in Canada. All other trademarks are owned by other companies. Please recycle. Printed in U.S.A. © 3M 2017. All rights reserved. 70-2013-0731-4 (Rev. 10/2017)