

3M Science.
Applied to Life.™



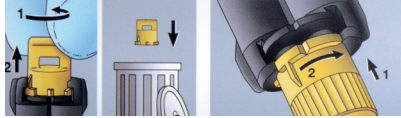
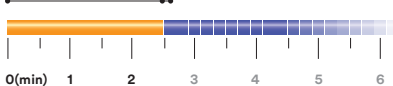
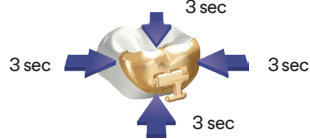
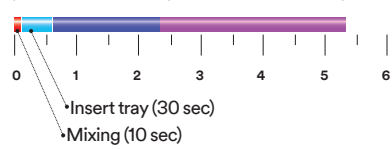
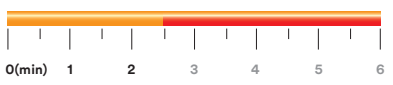
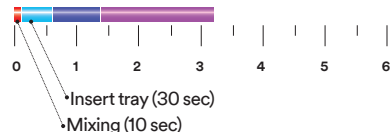
Incognito™ Appliance System

Bonding Protocols Step-by-Step Procedures

Bonding Protocols Step-by-Step Procedures

Adhesives	3
Bonding – Dual Cure, RelyX™ Unicem 2 Automix Self-Adhesive Resin Cement	4
· Incognito™ Clear Precision Tray	
· Thermoplastic Tray	
Bonding – Chemical Cure, Transbond™ IDB Pre-Mix Chemical Cure Adhesive	6
· Incognito™ Clear Precision Tray	
· 2-phase silicone tray	
Rebonding – RelyX™ Unicem 2 Automix Self-Adhesive Resin Cement	8
· Incognito™ Clear Precision Tray	
Rebonding – RelyX™ Unicem 2 Automix Self-Adhesive Resin Cement	10
· Without tray	
Bonding to Non-Enamel Surfaces – RelyX™ Unicem 2 Automix Self-Adhesive Resin Cement	12
· Pretreatment of metal crowns, crowns with metal lingual surface or composite crowns	
· Pretreatment of etchable glass ceramic restorations, zirconia and aluminium oxide ceramic restorations	
Notes	14



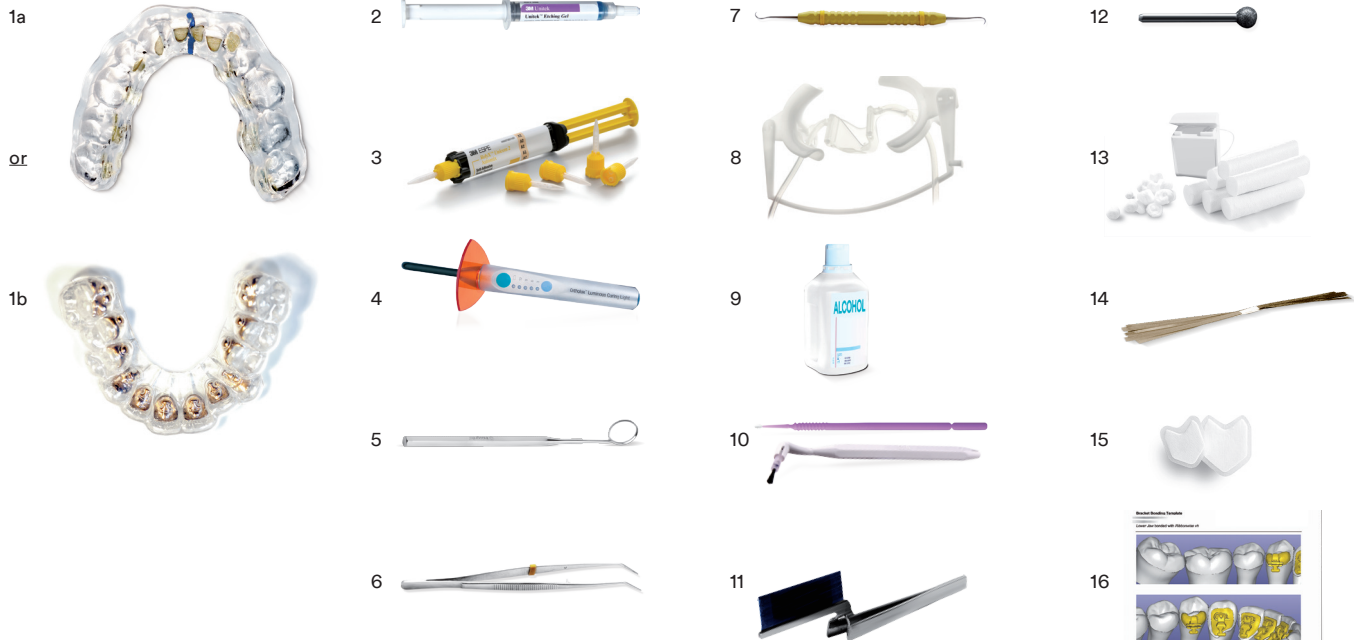
Material Properties	RelyX™ Unicem 2 Automix Self-Adhesive Resin Cement	Transbond™ IDB Pre-Mix Chemical Cure Adhesive
Indications	Bonding of Incognito™ Appliance System Brackets to <ul style="list-style-type: none"> Enamel Metal crowns, crowns with metal lingual surface, composite crowns Etchable glass ceramic restorations, zirconia and aluminium oxide ceramic restorations Rebonding of Incognito System Brackets	Bonding of Incognito™ Appliance System Brackets to <ul style="list-style-type: none"> Enamel
Bonding Trays	<ul style="list-style-type: none"> Incognito™ Clear Precision Tray Thermoplastic tray 	<ul style="list-style-type: none"> Incognito™ Clear Precision Tray 2-phase silicone tray
Material Description and Benefits	Self-Adhesive Universal Resin Cement <ul style="list-style-type: none"> Reduced bond failure Moisture tolerance Metal primer application not needed Automatic mixing Filled bonding material One adhesive for bonding and rebonding 	<ul style="list-style-type: none"> Transbond™ IDB Pre-Mix Chemical Cure Adhesive uses a BisGMA/TEGDMA based dental resin system, a chemical cure initiator system and 3% filler Metal primer application not needed
Storage	Do not store in refrigerator!	Store in refrigerator at 2°-8°C (36°-46°F) !
Shelf Life	18-months shelf life from manufacturing date, use within six months after opening the foil pouch	24-months shelf life from date of manufacture, when stored under refrigerated conditions at 2°-8°C (36°-46°F)
Usage	Use within six months after opening the foil pouch; used mixing tip stays on the cartridge as cap, discard initial cap. The mixing tip facilitates dosing and mixing. Do not cross-contaminate the outlets of the syringe. 	Resin A and B must be mixed well (10 seconds) before application <ul style="list-style-type: none"> Tray must be inserted within the required time Tray must be held (with pressure) for 3 minutes Tray must stay in mouth for 4 minutes before removal
Bonding Time	<div> <div>Working time (2.30 min)</div> <div>Light curing time (12 sec per tooth)</div>  </div> <div>  </div>	<div> <div>Refrigerated Working time (2.20 min) / Curing time (3 min)</div>  </div>
	<div> <div>Working time (2.30 min)</div> <div>Chemical curing time (6 min)</div>  </div>	<div> <div>Room temperature Working time (1.20 min) / Curing time (1.50 min)</div>  </div>

Dual Cure – RelyX™ Unicem 2 Automix Self-Adhesive Resin Cement

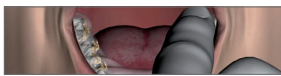
- Incognito™ Clear Precision Tray
- Thermoplastic Tray

Checklist

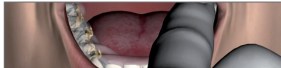
- | | | |
|---|---|---|
| <input type="checkbox"/> 1a Incognito™ Clear Precision Tray or | <input type="checkbox"/> 5 Dental Mirror | <input type="checkbox"/> 11 Articulating Paper |
| <input type="checkbox"/> 1b Thermoplastic Tray | <input type="checkbox"/> 6 Tweezer | <input type="checkbox"/> 12 Ball Burr |
| <input type="checkbox"/> 2 Unitek™ Etching Gel | <input type="checkbox"/> 7 Scaler | <input type="checkbox"/> 13 Cotton Balls and Dental Floss |
| <input type="checkbox"/> 3 RelyX™ Unicem 2 Automix Self-Adhesive Resin Cement | <input type="checkbox"/> 8 Dry Field System | <input type="checkbox"/> 14 Serrated Strips |
| <input type="checkbox"/> 4 Ortholux™ Luminous Curing Light | <input type="checkbox"/> 9 Alcohol | <input type="checkbox"/> 15 Dry Tips |
| | <input type="checkbox"/> 10 Brushes | <input type="checkbox"/> 16 Screenshots |



Incognito™ Clear Precision Tray ▼



Thermoplastic Tray ▼

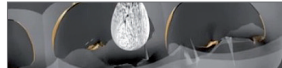


Verify the fit of the transfer tray.

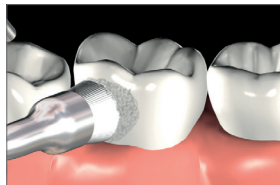
Incognito™ Clear Precision Tray ▼



Thermoplastic Tray ▼

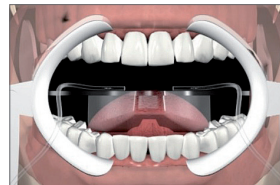


Clean the bracket surface with alcohol using a cotton pellet.

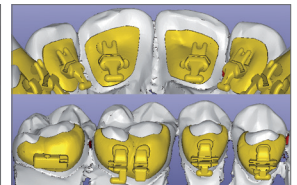


Clean the lingual surfaces thoroughly with pumice slurry and rinse with a water spray.

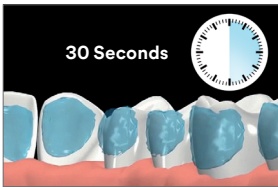
Make sure the surface is absolutely clean and free of dental pellicles.



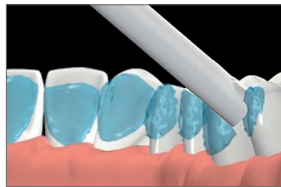
Insert the dry tips in each cheek and place the dry field system.



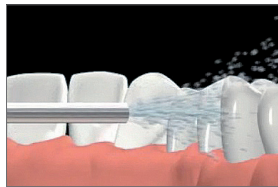
Use screenshot to reference all surfaces that need to be phosphoric acid etched.



Etch the lingual surface of all bonded teeth with 35% phosphoric acid for 30 seconds. Use screenshot for reference and check visually.



Remove etching gel with suction.



Rinse with water.



Carefully dry using oil-free and moisture-free air. Check etching result with the mirror.



RelyX Unicem 2 Cement is a dual cure self-adhesive resin cement. The mixing tip facilitates dosing and mixing. Do not cross-contaminate the outlets of the syringe.

Please observe the working time of 2 min 30 sec and refer to manufacturer's instructions.

Incognito™ Clear Precision Tray ▼



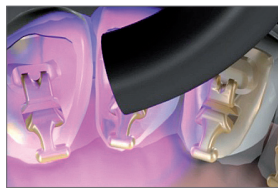
Thermoplastic Tray ▼



Using either the mixing tip or a micro-brush, apply a thin layer of bonding material to the bracket bases in the transfer tray. Control the amount of bonding material used. Too small amounts may result in gaps under the bracket bases. Too large amounts will create excessive flash.



Insert the transfer tray and hold in position while the assistant positions the curing light.



Hold the light guide of the Ortholux Luminous Curing Light* as close as possible and curing all four sides of the bracket for 3 seconds (total 12 sec. cure).

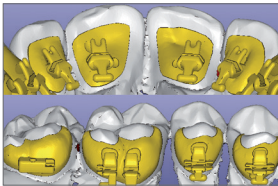
Tip: Start curing the anteriors followed by molars to ensure a good fixation.



Remove the dry field system first, then the Incognito Clear Precision Tray. Start with the outer rigid layer, work from posterior to anterior and from buccal to lingual. (use scaler if necessary)



Then remove the softer inner layer, again beginning in the posterior and working forward, and from the buccal to the lingual side.



Use the screenshots to check that all the brackets are positioned correctly.



Remove any excess bonding agent from the bracket's and the interproximal contacts using a scaler and dental floss. If necessary, use slow speed finishing burr.



Use dental floss to check that all the interproximal gaps are open.



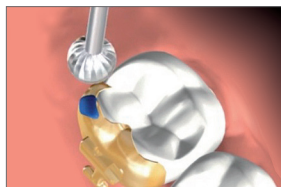
Use serrated strips if necessary. Don't forget to clean the occlusal and labial surfaces.



Check the bracket slots, tubes, wings and hooks for any remains of silicone from the bonding tray. This ensures proper wire fit and ligation.



Carefully check for premature contacts on the bracket bases in the lateral tooth area (premolars, molars) using Articulating paper. Premature contacts in the anterior region do not have to be corrected.



Remove premature contacts in the posterior tooth area using a ball burr.



Tip: Apply a sealant/ remineralization/ fluoridation agent to protect areas that were phosphoric acid etched but not covered with bonding material.

Please refer to the Ortholux™ Luminous Curing Light, RelyX™ Unicem 2 Automix Self-Adhesive Resin Cement, Unitek™ Etching Gel, ESPE™ Sil and CoJet™ Sand Instructions for Use for complete instructions.

Please store and use RelyX™ Unicem 2 Automix Self-Adhesive Resin Cement at room temperature!

*Curing time depends on power of your curing light. With less power, the required curing time increases. Please refer to manufacturer's instructions.

Chemical Cure – Transbond™ IDB Pre-Mix Chemical Cure Adhesive

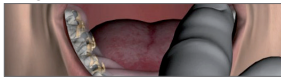
- Incognito™ Clear Precision Tray
- 2-Phase Silicone Tray

Checklist

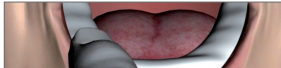
- | | | |
|--|---|---|
| <input type="checkbox"/> 1a Incognito™ Clear Precision Tray or | <input type="checkbox"/> 4 Mirror | <input type="checkbox"/> 10 Cotton and Dental Floss |
| <input type="checkbox"/> 1b 2-Phase Silicone Tray | <input type="checkbox"/> 5 Tweezer | <input type="checkbox"/> 11 Brushes |
| <input type="checkbox"/> 2 Unitek™ Etching Gel | <input type="checkbox"/> 6 Scaler | <input type="checkbox"/> 12 Dry Tips |
| <input type="checkbox"/> 3 Transbond™ IDB Pre-Mix Chemical Cure Adhesive | <input type="checkbox"/> 7 Serrated Strips | <input type="checkbox"/> 13 Articulating Paper |
| | <input type="checkbox"/> 8 Dry Field System | <input type="checkbox"/> 14 Ball Burr |
| | <input type="checkbox"/> 9 Alcohol | <input type="checkbox"/> 15 Screenshots |



Incognito™ Clear Precision Tray ▼



2-Phase Silicone Tray ▼



Verify the fit of the transfer tray.

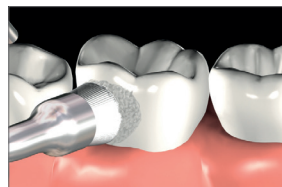
Incognito™ Clear Precision Tray ▼



2-Phase Silicone Tray ▼

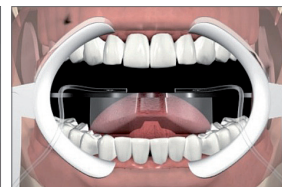


Clean the bracket surface with alcohol using a cotton pellet.

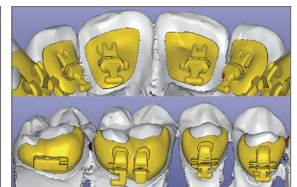


Clean the lingual surfaces thoroughly with pumice slurry and rinse with a water spray.

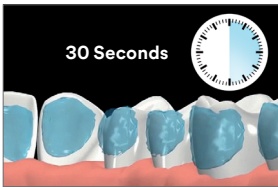
Make sure the surface is absolutely clean and free of dental pellicles.



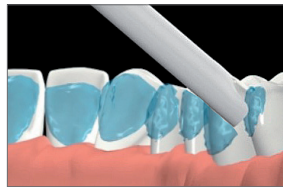
Insert the dry tips in each cheek and place the dry field system.



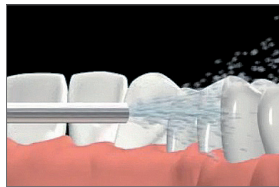
Use screenshot to reference all surfaces that need to be phosphoric acid etched.



Etch the lingual surface of all bonded teeth with 35% phosphoric acid for 30 seconds. Use screenshot for reference and check visually.



Remove etching gel with suction.



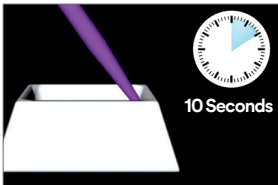
Rinse with water.



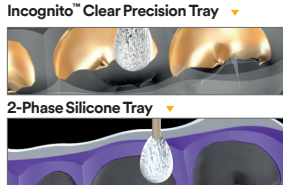
Carefully dry using oil-free and moisture-free air. Check etching result with the mirror.



Dispense equal amounts, 4 drops each of Transbond IDB Adhesive Part A and Part B into a mixing well. Keep Transbond IDB Adhesive refrigerated until ready to mix (working with cold adhesive increases working time).



Mix thoroughly by stirring for 10 seconds.



For indirect bonding, apply a thin layer of the mixed adhesive to every bracket base in the tray (assistant) and ...



... apply a thin layer of the same adhesive to the surface of the tooth (orthodontist).

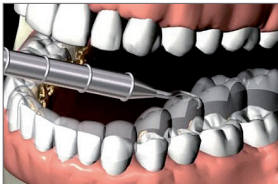
Control with the mirror.



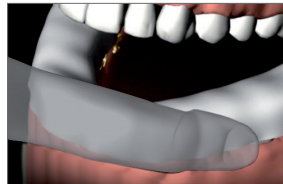
Insert the transfer tray and hold in position for three minutes. Then leave in mouth for one additional minute.



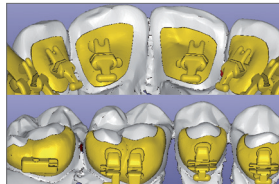
Incognito™ Clear Precision Tray
Remove the dry field system first, then the Incognito Clear Precision Tray. Start with the outer rigid layer, work from posterior to anterior and from buccal to lingual (use scaler if necessary).



Incognito™ Clear Precision Tray
Then remove the softer inner layer, again beginning in the posterior and working forward, and from the buccal to the lingual side (Incognito Clear Precision Tray).



2-Phase Silicone Tray
Remove the dry field system first, then the bonding tray. Work from posterior to anterior and from buccal to lingual (2-phase silicone tray).



Use the screenshots to check that all the brackets are positioned correctly.



Remove any excess bonding agent from the bracket's and the inter-proximal contacts using a scaler and dental floss. If necessary, use slow speed finishing burr.



Use dental floss to check that all the interproximal gaps are open.



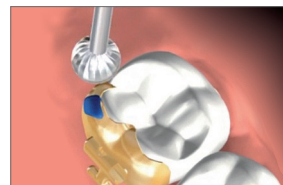
Use serrated strips if necessary. Don't forget to clean the occlusal and labial surfaces.



Check the bracket slots, tubes, wings and hooks for any remains of silicone from the bonding tray. This ensures proper wire fit and ligation.



Carefully check for premature contacts on the bracket bases in the lateral tooth area (premolars, molars) using Articulating paper. Premature contacts in the anterior region do not have to be corrected.



Remove premature contacts in the posterior tooth area using a ball burr.

Please refer to the Ortholux™ Luminous Curing Light, RelyX™ Unicem 2 Automix Self-Adhesive Resin Cement, Unitek™ Etching Gel, ESPE™ Sil and CoJet™ Sand Instructions for Use for complete instructions.

Please store Transbond™ IDB Pre-Mix Adhesive in refrigerator at 2°-8°C (36°-46°F)!

*Curing time depends on power of your curing light. With less power, the required curing time increases. Please refer to manufacturer's instructions.

Rebonding – RelyX™ Unicem 2 Automix Self-Adhesive Resin Cement

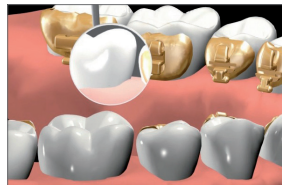
• Incognito™ Clear Precision Tray

Checklist

- | | | |
|---|---|--|
| <input type="checkbox"/> 1 Empty Incognito™ Clear Precision Tray | <input type="checkbox"/> 6 Scalpel | <input type="checkbox"/> 13 Brushes |
| <input type="checkbox"/> 2 Ortholux™ Luminous Curing Light | <input type="checkbox"/> 7 Tweezer | <input type="checkbox"/> 14 Sandblasting device to clean bracket surface |
| <input type="checkbox"/> 3 RelyX™ Unicem 2 Automix Self-Adhesive Resin Cement | <input type="checkbox"/> 8 Dental Mirror | <input type="checkbox"/> 15 Ball Burr |
| <input type="checkbox"/> 4 Unitek™ Etching Gel | <input type="checkbox"/> 9 Articulating Paper | <input type="checkbox"/> 16 Screenshots |
| <input type="checkbox"/> 5 Debonded Incognito™ Appliance System Bracket | <input type="checkbox"/> 10 Scaler | |
| | <input type="checkbox"/> 11 Cotton Rolls and Dental Floss | |
| | <input type="checkbox"/> 12 Alcohol | |



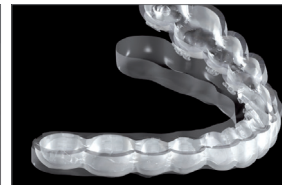
Prepare the surface of the tooth. Remove all residual bonding agent using a tungsten carbide finishing burr.



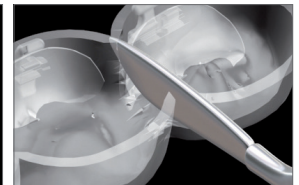
Check visually ...



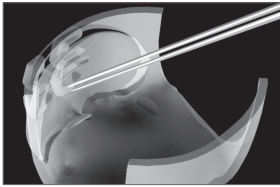
... and with probing to ensure that all bonding residue has been removed.



Separate the inner soft layer of the bonding tray from the rigid outer layer.



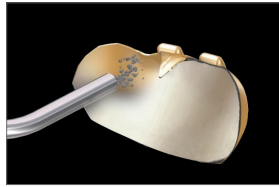
To prepare the repositioning jig, identify the correct tooth cavity in the silicone tray and cut along the interproximal areas mesial and distal of this tooth.



Check for, and remove, any loose silicone residue in the bracket cavity.



Without the bracket inserted, place the repositioning jig on the tooth and verify the fit.



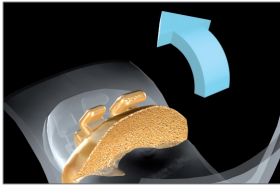
Vertically sandblast the base of the bracket. Completely remove any remaining bonding material and roughen the metal surface.



Sandblasted bracket base.



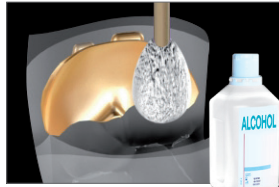
Check bracket fit to ensure that surfaces are smooth and the bracket is correctly positioned in the mouth.



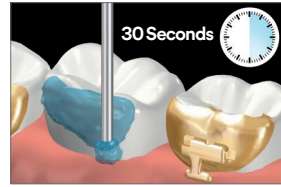
Insert the sandblasted bracket into the repositioning jig.



Incognito™ Clear Precision Tray
With the bracket inserted, place the repositioning jig on the tooth and verify the fit again.



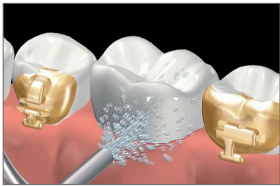
Clean the bracket base with alcohol using a cotton pellet.



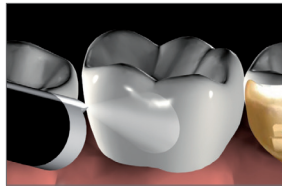
Apply etching gel (35% phosphoric acid) and etch for 30 seconds. Refer to screenshot for position, if needed.



Remove etchant with suction.



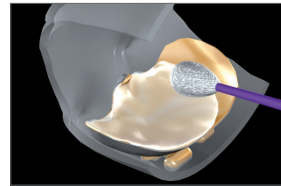
Rinse with water.



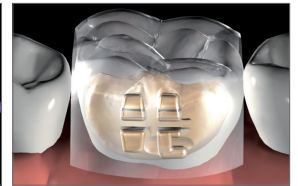
Carefully dry using oil- and moisture-free air and recheck the surface of the tooth.



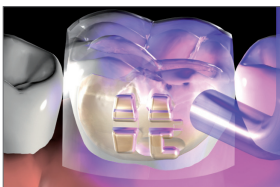
RelyX Unicem 2 Automix Cement is a dual cure self-adhesive resin cement. The mixing tip facilitates dosing and mixing. Do not cross-contaminate the outlets of the syringe. Please observe the working time of 2 min 30 sec and refer to manufacturer's instructions.



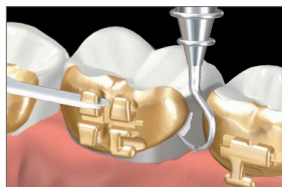
Using the mixing tip or a micro-brush, apply a thin, even layer of bonding material directly to the bracket base in the repositioning jig. Control the amount of bonding material used. Too small amounts may result in gaps under the bracket base. Too large amounts will create excessive flash.



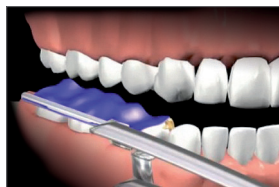
Seat the repositioning jig with the bracket inserted.



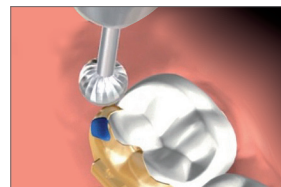
Hold the light guide of the Ortholux Luminous Curing Light* as close as possible and curing all four sides of the bracket for 3 seconds (total 12 sec. cure).



Remove the repositioning jig and carefully remove any excess bonding material using a scaler or a slow speed finishing burr if necessary.



Check occlusion.



Any premature contacts with the bracket base in the lateral tooth area must be removed with the ball burr.

Please refer to the Ortholux™ Luminous Curing Light, RelyX™ Unicem 2 Automix Self-Adhesive Resin Cement, Unitek™ Etching Gel, ESPE™ Sil and CoJet™ Sand Instructions for Use for complete instructions.

Please store RelyX™ Unicem 2 Automix Self-Adhesive in refrigerator at 2°-8°C (36°-46°F)!

*Curing time depends on power of your curing light. With less power, the required curing time increases. Please refer to manufacturer's instructions.

Rebonding – RelyX™ Unicem 2 Automix Self-Adhesive Resin Cement

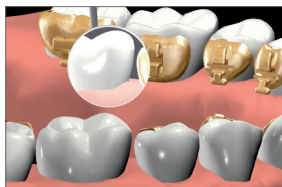
• Without Tray

Checklist

- | | | |
|---|--|--|
| <input type="checkbox"/> 1 RelyX™ Unicem 2 Automix Self-Adhesive Resin Cement | <input type="checkbox"/> 5 Articulating Paper | <input type="checkbox"/> 10 Brushes |
| <input type="checkbox"/> 2 Ortholux™ Luminous Curing Light | <input type="checkbox"/> 6 Scaler | <input type="checkbox"/> 11 Tweezer |
| <input type="checkbox"/> 3 Unitek™ Etching Gel | <input type="checkbox"/> 7 Cotton Rolls and Dental Floss | <input type="checkbox"/> 12 Sandblasting Device to clean Bracket surface |
| <input type="checkbox"/> 4 Dental Mirror | <input type="checkbox"/> 8 Ball Burr | <input type="checkbox"/> 13 Screenshots |



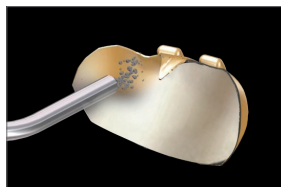
Prepare the surface of the tooth. Remove all residual bonding agent using a tungsten carbide finishing burr.



Check visually ...



... and with probing to ensure that all bonding residue has been removed.



Vertically sandblast the base of the bracket. Completely remove the composite base and roughen the metal surface.



Sandblasted bracket base.

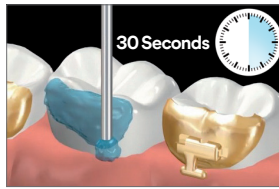


Check bracket fit to ensure that it is correctly positioned in the mouth using a pair of special lingual bracket tweezers.

Option: Isolate hooks, wings and bracket slot with wax to avoid contamination with resin cement.



After checking the fit, clean the bracket base with alcohol using a cotton pellet.



Apply etching gel (35% phosphoric acid) and etch for 30 seconds.



Remove etchant with suction.



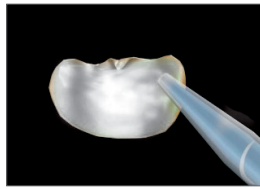
Rinse with water.



Carefully dry using oil- and moisture-free air and recheck the surface of the tooth.



RelyX Unicem 2 Automix Cement is a dual cure self-adhesive resin cement. The mixing tip facilitates dosing and mixing. Do not cross-contaminate the outlets of the syringe. Please observe the working time of 2 min 30 sec and refer to manufacturer's instructions.



Using the mixing tip or a micro-brush, apply a thin, even layer of bonding material directly to the bracket base. Control the amount of bonding material used. Too little of the bonding material may result in gaps under the bracket base. Too much will create excessive flash.



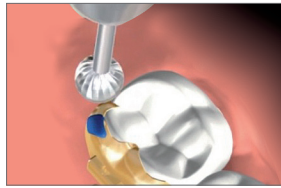
Seat the bracket and carefully remove excess resin.



Hold the light guide of the Ortholux Luminous Curing Light* as close as possible and curing all four sides of the bracket for 3 seconds (total 12 sec. cure).



Check occlusion.



Any premature contacts with the bracket base in the lateral tooth area must be removed with the ball bur.

Please refer to the **Ortholux™ Luminous Curing Light, RelyX™ Unicem 2 Automix Self-Adhesive Resin Cement, Unitek™ Etching Gel, ESPE™ Sil and CoJet™ Sand** Instructions for Use for complete instructions.

Please store and use **RelyX™ Unicem 2 Automix Self-Adhesive Resin Cement** at room temperature!

*Curing time depends on power of your curing light. With less power, the required curing time increases. Please refer to manufacturer's instructions.

Bonding to Non-Enamel Surfaces – RelyX™ Unicem 2 Automix Self-Adhesive Resin Cement

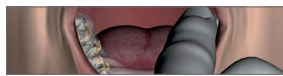
Checklist

- | | | |
|---|---|---|
| <input type="checkbox"/> 1 Incognito™ Clear Precision Tray | <input type="checkbox"/> 8 Dental Mirror | <input type="checkbox"/> 15 Aluminium Oxide $\leq 40 \mu\text{m}$ |
| <input type="checkbox"/> 2 Ortholux™ Luminous Curing Light* | <input type="checkbox"/> 9 Articulating Paper | <input type="checkbox"/> 16 Dry Field System |
| <input type="checkbox"/> 3 RelyX™ Unicem 2 Automix | <input type="checkbox"/> 10 Scaler | <input type="checkbox"/> 17 Ball Burr |
| <input type="checkbox"/> 4 Unitek™ Etching Gel | <input type="checkbox"/> 11 Sandblasting Device | <input type="checkbox"/> 18 Serrated Strips |
| <input type="checkbox"/> 5 ESPE™ Sil | <input type="checkbox"/> 12 Alcohol | <input type="checkbox"/> 19 Dry Tips |
| <input type="checkbox"/> 6 CoJet™ Sand | <input type="checkbox"/> 13 Brushes | <input type="checkbox"/> 20 Screenshots |
| <input type="checkbox"/> 7 Tweezer | <input type="checkbox"/> 14 Cotton Rolls and Dental Floss | |

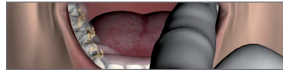


Preparation

Incognito™ Clear Precision Tray



Thermoplastic Tray

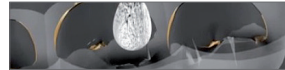


Verify the fit of the transfer tray.

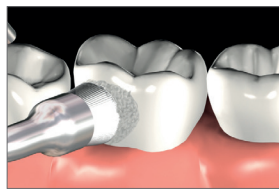
Incognito™ Clear Precision Tray



Thermoplastic Tray

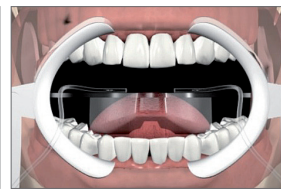


Clean the bracket surface with alcohol using a cotton pellet.

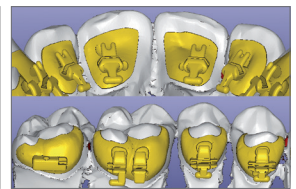


Clean the lingual surfaces thoroughly with pumice slurry and rinse with a water spray.

Make sure the surface is absolutely clean and free of dental pellicles.



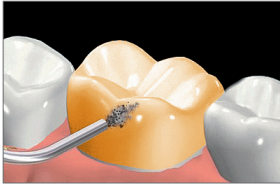
Insert the dry tips in each cheek and place the dry field system.



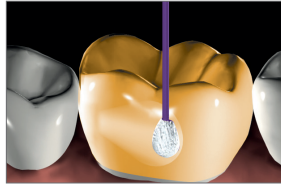
Use screenshot to reference all surfaces that need to be phosphoric acid etched.

Pretreatment

- Metal crowns
- Crowns with metal lingual surface
- Composite crowns



Blast the restoration surface with aluminium oxide $\leq 50\mu\text{m}$. Cover the patient's face to protect it from the powder. Rinse well!

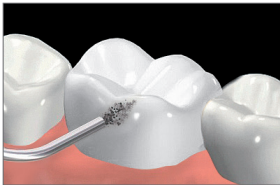


Clean the blasted surface with alcohol.



Carefully dry using oil- and moisture-free air. Check the treatment result with the mirror.

- Etchable glass ceramic restorations
- Zirconia and aluminium oxide ceramic restorations

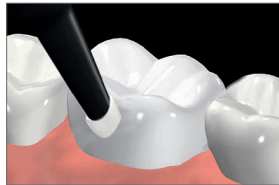


Coat (silicate) the restoration surface to be luted with the micro-blasting device CoJet Prep** and the blast-coating agent CoJet Sand** from a distance of 2 – 10 mm and vertically to the surface for 15 seconds.



See Instructions For Use for CoJet Prep and CoJet Sand!

Make sure that you don't hurt the gingiva while micro-etching. Cover the patient's face to protect it from the powder. Rinse well!

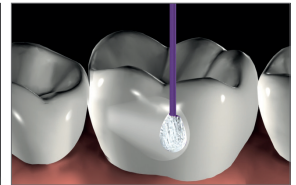


Blow away any residues of the blasting agent with water-free and oil-free air. Check the treatment result with the mirror.



Apply ESPE Sil in accordance with the instructions for use. For each use, freshly dose ESPE Sil in a clean, grease-free dish.

Immediately after use, reseal the bottle containing the volatile solution.



Use a disposable brush to apply the silane solution to the surface(s) silicized with CoJet Sand once. Allow the volatile silane solution (ESPE Sil) to dry for 30 seconds.

Bonding with RelyX™ Unicem 2 Automix Self-Adhesive Resin Cement

For Instructions continue on page 5 - step 10.

**CoJet Intraoral Adhesive Repair System

- CoJet Prep, the intraoral microblasting unit.
- CoJet Sand, the coating medium for cold silicatisation of the restoration surface.
- ESPE Sil, the silane coupling agent (for silicized surfaces)



Please refer to the Ortholux™ Luminous Curing Light, RelyX™ Unicem 2 Automix Self-Adhesive Resin Cement, Unitek™ Etching Gel, ESPE™ Sil and CoJet™ Sand Instructions for Use for complete instructions.

Please store RelyX™ Unicem 2 Automix Self-Adhesive in refrigerator at 2°-8°C (36°-46°F)!

*Curing time depends on power of your curing light. With less power, the required curing time increases. Please refer to manufacturer's instructions.

[illegible]

Notes

[illegible]



3M Oral Care
2510 Conway Avenue
St. Paul MN 55144-1000 USA

Phone: 1-800-423-4588
Web: 3M.com/ortho

TOP-Service für Lingualtechnik GmbH
A 3M Company
Schledehauser Straße 81
49152 Bad Essen
Germany
Tel.: +49 (0)5472 – 94 91 - 0
Fax: +49 (0)5472 – 94 91 - 19
E-Mail: info-incognito@mmm.com
www.incognito.net

3M, "3M Science. Applied to Life.", CoJet, ESPE, Ortholux, RelyX, Transbond, Incognito and Unitek are trademarks of 3M. Used under license in Canada. All other trademarks are property of their respective holders.

For more information please visit
www.incognito.net

© 3M 2017. All rights reserved.
70-2021-5281-8