



Esthetic Restoration Solution

**A beautiful
smile she can't
wait to share.**

Menu

- ▶ Introduction
- ▶ Esthetic Restoration Solution
 - A difference you can see!
- ▶ Filtek™ Z350 XT Universal Restorative
 - Nanotechnology. For a beautiful polish.
 - Nanotechnology. For beautifully strong restorations ... anywhere
- ▶ Sof-Lex™ Diamond Polishing System
 - Diamond particles. For a gorgeous, paste-like gloss
- ▶ Competitive Comparisons
- ▶ Resources
- ▶ Ordering Information



Because you want every patient to leave with a beautiful smile.

Patients love the way highly polished restorations look and feel, but creating a high-end, natural-looking gloss can take more of your valuable time. So what do you do ... do you sacrifice higher esthetics for higher productivity? Or spend the extra time to create a beautiful smile, because, “that’s just the way it is?”

That’s why 3M created the **Esthetic Restoration Solution** ... to make it simple to create natural-looking restorations with a gorgeous paste-like gloss.

Watch the video.



Introduction

Now simple esthetics can be as easy as 1, 2, 3...

A factor in the success of this solution is 3M's unprecedented history in abrasive technologies. We leveraged that expertise to create a polishing solution that can help you maximize the esthetic benefits of Filtek™ Z350 XT Universal Restorative with ease and simplicity.



Esthetic Restoration Solution

A difference you can see!

Here's proof that the composite and polishing system you use ... matters.
Notice a clearer reflection when Filtek™ Z350 XT Universal Restorative is polished with the Sof-Lex™ Diamond Polishing System.



Filtek™ Z350 XT
Universal Restorative
polished with Sof-Lex™
Diamond Polishing
System



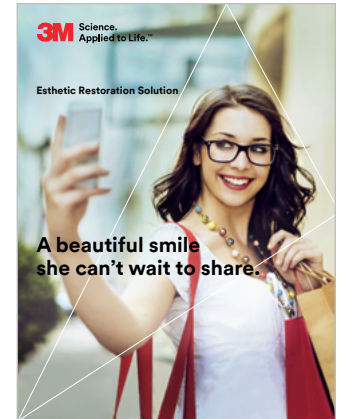
TPH Spectra®
Universal Composite
polished with
Enhance® PoGo®
Finishing and
Polishing System



Tetric EvoCeram®
Universal Composite
polished with
Astropol®



Herculite™ Ultra
Universal Nanohybrid
Composite polished
with Occlubrush®
Polishing System



Download the brochure
(PDF, 1.1 MB)

Filtek™ Z350 XT Universal Restorative

Nanotechnology. For a beautiful polish.

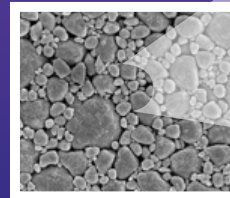
You can spend a lot of time polishing most composites, only to find the initial gloss doesn't last long. Or, you can create smiles your patients will love by using our Esthetic Restoration Solution.

Thanks to 3M's unique, patented nanotechnology, Filtek™ Z350 XT Universal Restorative is easy to polish and also offers unsurpassed polish retention.



3M's TRUE nanofiller technology

Filtek Z350 XT restorative uses the same TRUE nanofiller technology that's been time-proven by the Filtek™ family of leading restorative products. Not only does this technology contribute to high strength, it offers excellent handling and is easy to polish.



5K magnification
of nanocluster



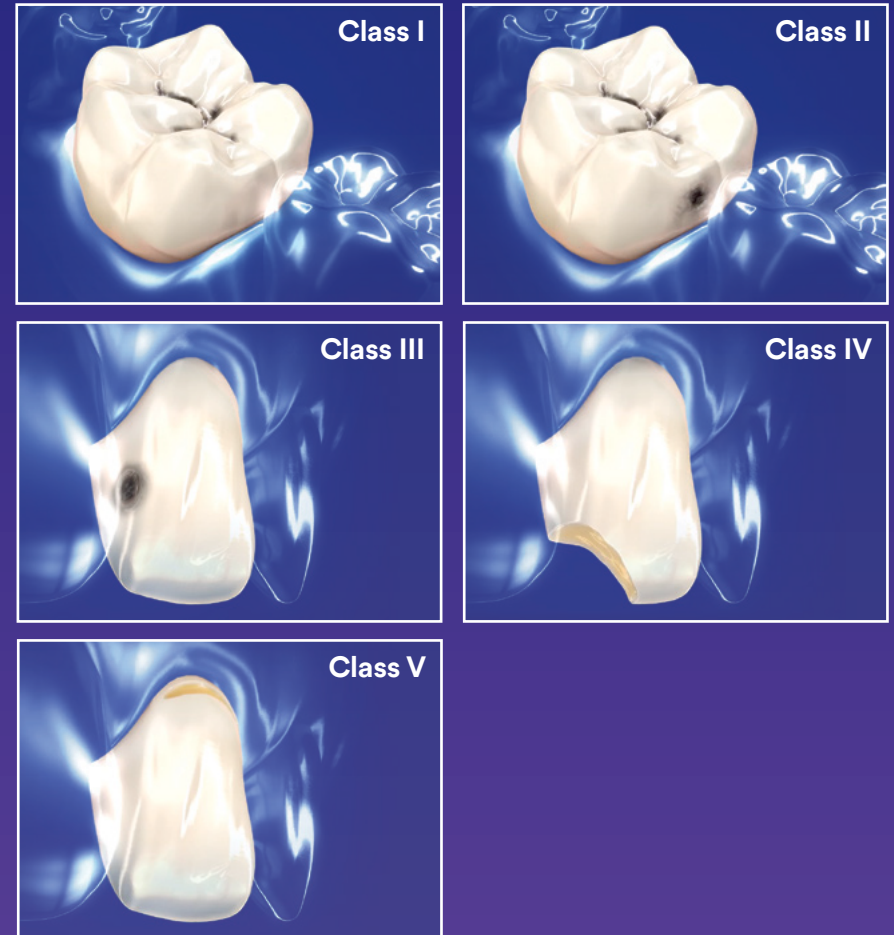
50K magnification
of nanocluster

Filtek™ Z350 XT Universal Restorative

**Nanotechnology.
For beautifully
strong restorations ...
anywhere.**

The same nanotechnology that makes Filtek™ Z350 XT Universal Restorative beautiful makes it strong, too, giving you the option of using it in any place and for any Class.

Having one restorative that can do it all is a beautiful thing.



Sof-Lex™ Diamond Polishing System

Diamond particles. For a gorgeous, paste-like gloss.

The esthetic appearance of a restoration depends on the shade, shape and the gloss achieved by final polishing.

With the 3M™ ESPE™ Sof-Lex™ Diamond Polishing System, you can get a gorgeous, diamond paste-like gloss—with the convenience of a rubberized system!



Sof-Lex™ Pre-Polishing Spiral (beige) smooths and removes scratches in restorations that develop during contouring and prepares the surface for high-gloss polishing.

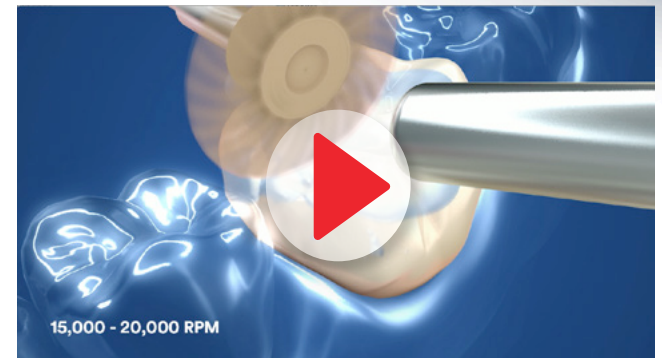


Sof-Lex™ Diamond Polishing Spiral (pink) contains diamond particles to create a smooth, high-gloss polish.

Enjoy a simple and efficient way to polish. You won't need to stop and switch between traditional points, cups, discs and brushes. The flexible spirals adapt to all tooth surfaces—anterior and posterior, convex and concave. Plus, they can be sterilized and reused, making them an economical choice for your practice.



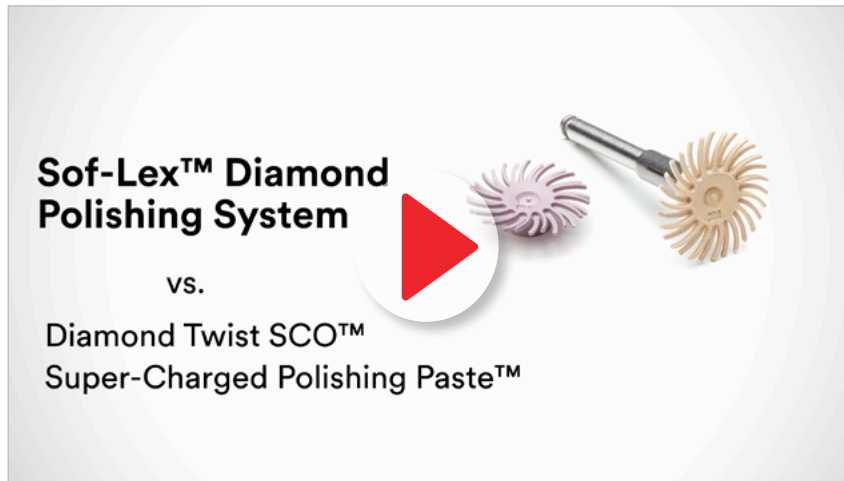
**See how the spirals work.
Watch the video.**



Competitive Comparisons

See how much more efficiently you can achieve a high-gloss polish.

Watch these head-to-head videos.



Polishing anterior restorations

3M™ ESPE™ Sof-Lex™ Diamond Polishing System on Filtek™ Z350 XT Universal Restorative vs. a polishing paste with a rubberized system (1:36)



Polishing posterior restorations

3M™ ESPE™ Sof-Lex™ Diamond Polishing System on Filtek™ Z350 XT Universal Restorative vs. Dentsply Enhance® Polishers on TPH Spectra® Universal Restorative Composite (3:00)

Competitive Comparisons

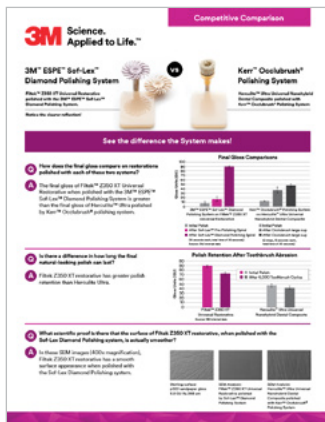
See how your system compares.

How does our Esthetic Restoration Solution compare to other composite and polishing systems?

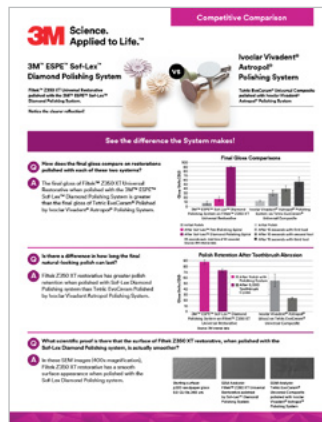
Competitive Comparison Sheets



3M™ ESPE™ Sof-Lex™
Diamond Polishing
System on Filtek™
Z350 XT Universal
Restorative vs. Dentsply
Enhance® Polishers on
TPH Spectra® Universal
Restorative Composite
(PDF, 729 KB)



3M™ ESPE™ Sof-Lex™
Diamond Polishing
System on Filtek™
Z350 XT Universal
Restorative vs. Kerr™
Occlubrush® Polisher
on Herculite™ Ultra
Universal Nanohybrid
Dental Composite
(PDF, 739 KB)



3M™ ESPE™ Sof-Lex™
Diamond Polishing
System on Filtek™
Z350 XT Universal
Restorative vs. Ivoclar
Vivadent® Astropol®
Polishing System on
Tetric EvoCeram®
Universal Composite
(PDF, 698 KB)

Resources

Brochure



Esthetic Restorative Solution, 4-page brochure (PDF, 1.1 MB)

Sell Sheet



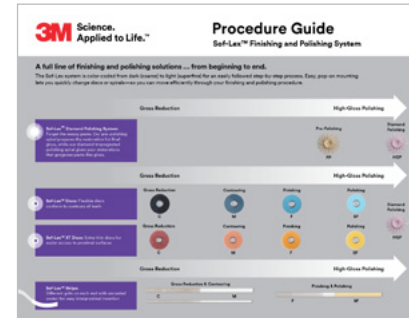
Sof-Lex™ Diamond Polishing System, 2-page sell sheet (PDF, 538 KB)

Technical Data Sheet



Sof-Lex™ Diamond Polishing System, 16-page technical data sheet (PDF, 2 MB)

Procedure Guide



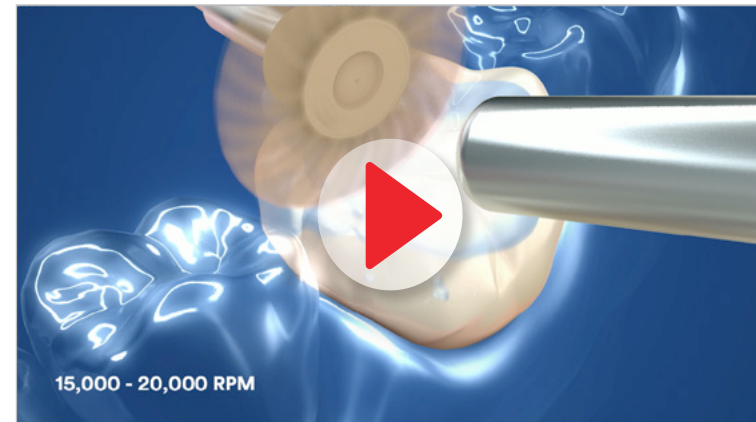
Sof-Lex™ Diamond Finishing and Polishing System, 2-page procedure guide (PDF, 1.2 MB)

Resources

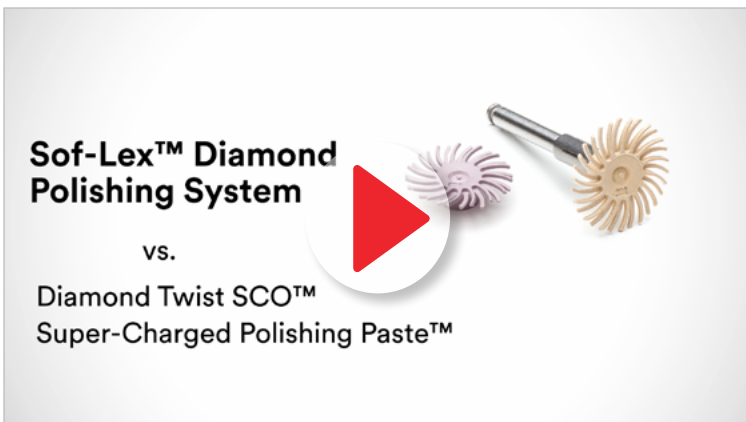
Videos



Esthetic Restorative Solution, Introduction Video (2:12)



Sof-Lex™ Diamond Polishing System, Technique Video (1:10)



Anterior restoration video comparing 3M™ ESPE™ Sof-Lex™ Diamond Polishing System on Filtek™ Z350 XT Universal Restorative vs. a polishing paste with a rubberized system (1:36)



Posterior restoration video comparing 3M™ ESPE™ Sof-Lex™ Diamond Polishing System on Filtek™ Z350 XT Universal Restorative to Dentsply Enhance® Polishes on TPH Spectra® Universal Restorative Composite (3:00)

Ordering Information

Filtek™ Z350 XT Universal Restorative

Item #	Product Information
7018S	Filtek™ Z350 XT Universal Restorative Single Shade Intro Kit—Syringe Kit includes: 4 – 4g syringes: 2 each of Body shades A2, A3; Technique Guide; Instructions for Use
7018D	Filtek™ Z350 XT Universal Restorative Dual Shade Intro Kit—Syringe Kit includes: 4 – 4g syringes: 1 each of Dentin shades A3, A4 and Enamel shades A2, A3; 1 Shade Selector Wheel; Technique Guide; Instructions for Use

DENTIN SHADE REFILLS

Refill	Item #	Item #
SHADE	SYRINGE	CAPSULE
A1D	7018A1D	
A2D	7018A2D	
A3D	7018A3D	
A4D	7018A4D	
B3D	7018B3D	
C4D	7018C4D	
White	7018WD	

ENAMEL SHADE REFILLS

Refill	Item #	Item #
SHADE	SYRINGE	CAPSULE
A1E	7018A1E	
A2E	7018A2E	
A3E	7018A3E	
B1E	7018B1E	
B2E	7018B2E	
D2E	7018D2E	
White	7018WE	
Extra White	7018XWE	

BODY SHADE REFILLS

Refill	Item #	Item #
SHADE	SYRINGE	CAPSULE
A1B	7018A1B	7019A1B
A2B	7018A2B	7019A2B
A3B	7018A3B	7019A3B
A3.5B	7018A3.5B	7019A3.5B
B1B	7018B1B	7019B1B
B2B	7018B2B	7019B2B
C1B	7018C1B	
C2B	7018C2B	7019C2B
A4B	7018A4B	7018A4B
A6B	7018A6B	
B3B	7018B3B	
B5B	7018B5B	
C3B	7018C3B	7018C3B
D2B	7018D2B	
D3B	7018D3B	
White	7018WB	
Extra White	7018XWB	

TRANSLUCENT SHADE REFILLS

Refill	Item #	Item #
SHADE	SYRINGE	CAPSULE
Clear	7018CT	
Blue	7018BT	
Grey	7018GT	
Amber	7018AT	

SYRINGE SHADE REFILLS: Include 1 – 4g syringe; Instructions for Use

CAPSULE SHADE REFILLS Dentin, Enamel and Translucent Shade Refills include 10 – 0.2g capsules; Body Shade Refills include 20 – 0.2g capsules; Instructions for Use

Sof-Lex™ Diamond Polishing System

Item #	Product Information
5092-I	Sof-Lex™ Diamond Polishing System—Introductory Kit Kit includes: 5 Sof-Lex™ Pre-Polishing Spirals (Beige); 5 Sof-Lex™ Diamond Polishing Spirals (Pink); Instructions for Use; Technique Card
5090	Sof-Lex™ Pre-Polishing Spirals—Refill Includes: 15 Sof-Lex Pre-Polishing Spirals (Beige)
5091	Sof-Lex™ Diamond Polishing Spirals—Refill Includes: 15 Sof-Lex Diamond Polishing Spirals (Pink)

Simple Esthetics

While Filtek™ Z350 XT Universal Restorative is known for its wide range of shades and opacities, most single-shade restorations are made with one of 8 Body shades.



3M Oral Care
2510 Conway Avenue
St. Paul, MN 55144-1000 USA
Phone 1-800-634-2249
Web 3M.com/dental

3M Deutschland GmbH
Location Seefeld
3M ESPE • ESPE Platz
82229 Seefeld • Germany
Info3MESPE@mmm.com
www.3MESPE.com

www.3MESPE.com

3M, 3M Science. Applied to Life., ESPE, Filtek and Sof-Lex are trademarks of 3M or 3M Deutschland GmbH. Used under license in Canada. © 3M 2016. All rights reserved. All other trademarks are not trademarks of 3M.