

# The edge you need for the productivity you want.

## 3M™ Lava™ Ultimate CAD/CAM Restorative for Planmill™

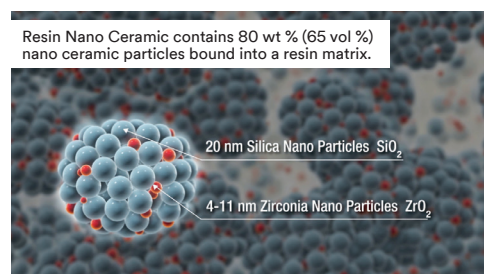
The world's first resin nano ceramic material, Lava Ultimate Restorative is designed for **precision**, **speed** and single-appointment **efficiency**. Because the resin nano ceramic material is less brittle than glass ceramic, it **resists chipping and cracking when milled**. Dentists can achieve **better edge quality** and smooth margins for a brilliant restoration that feels as natural as it looks. There's **no post firing**, so the **restoration is finished faster**. Simply polish to a high-quality luster. It's an advance that will improve your productivity and create a better experience for your patients.



### The benefits of resin nano ceramic material

Nanotechnology and proprietary curing treatment create a unique hybrid material that offers the benefits of both glass ceramic and resin materials:

- High flexural strength adds durability to posterior restorations.
- Excellent wear resistance.
- Less wear to opposing enamel than glass ceramics.
- Brilliant and long-lasting polish.



### The cementation system

Lava Ultimate restorations must be bonded with an adhesive resin cement. 3M Oral Care recommends 3M™ RelyX™ Ultimate Adhesive Resin Cement with 3M™ Scotchbond™ Universal Adhesive — primer and adhesive in one bottle. For step-by-step instructions, download a free copy of the Step by Step guide at [3MESPE.com/LavaUltimateTips](http://3MESPE.com/LavaUltimateTips).



## Chairside steps to give you brilliant results

From onlays and inlays to veneers, 3M™ Lava™ Ultimate Restorative is engineered specifically to help you produce efficient chairside restorations. And create results your patients will love.

### Onlay clinical case study



1. Initial situation



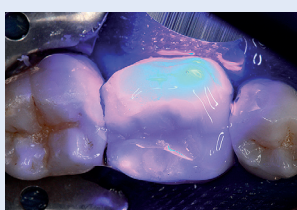
2. Tooth preparation



3. Selective etch



4. Bond with  
3M™ Scotchbond™  
Universal Adhesive and  
3M™ RelyX™ Ultimate  
Adhesive Resin Cement



5. Light cure each surface



6. Final restoration



Lava Ultimate restorative is indicated for:

- Onlays
- Inlays
- Veneers



Our Step by Step Guide for Lava Ultimate Restorative can be found online at **3MESPE.com/LavaUltimateTips**.

## Ordering Information

3M™ Lava™ Ultimate Restorative for Planmill™ — Refills  
Each refill box contains five blocks of a single shade in size 14L.

### 3M™ Lava™ Ultimate Restorative for Planmill™ – REFILLS

Shade	Low Translucency	High Translucency
	Size 14L Item No.	Size 14L Item No.
A1	5074A1-LT	5074A1-HT
A2	5074A2-LT	5074A2-HT
A3	5074A3-LT	5074A3-HT
A3.5	5074A3.5-LT	
B1	5074B1-LT	5074B1-HT
C2	5074C2-LT	
D2	5074D2-LT	
BLEACH	5074BL-LT	



**Customer Care Center: 1-800-634-2249**  
**3M.com/LavaUltimate**



3M Oral Care  
2510 Conway Avenue  
St. Paul, MN 55144-1000 USA

Phone 1-800-634-2249  
Web 3M.com/dental

3M Canada  
Post Office Box 5757  
London, Ontario N6A 4T1  
Canada

Phone 1-888-363-3685

3M, ESPE, Lava, RelyX, and Scotchbond are trademarks of 3M or 3M Deutschland GmbH. Used under license in Canada. PlanMill is a registered trademark of Planmeca.

Please recycle. Printed in U.S.A. © 3M 2017.  
All rights reserved. 70-2013-0710-8 (REV 4/2017)