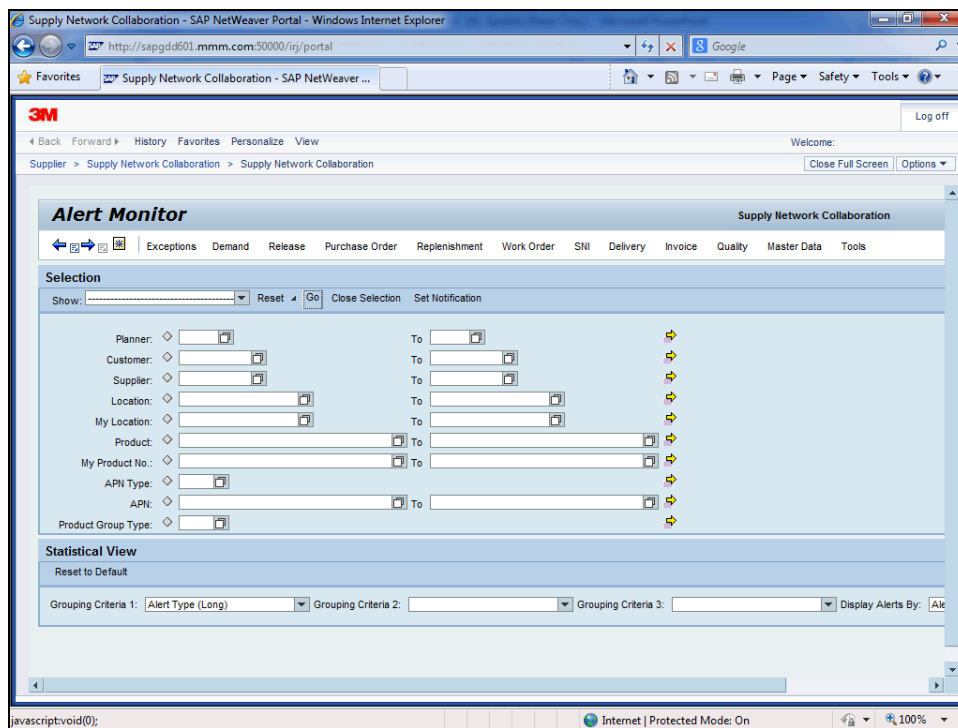



## Reviewing the 3M Demand in the Order Forecast Details EN

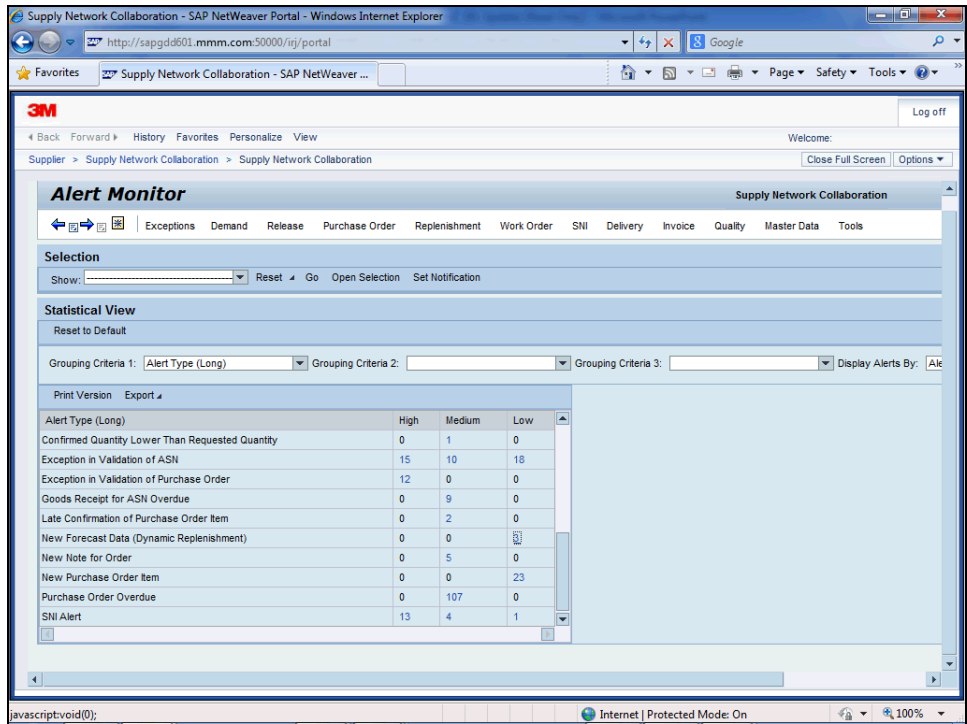
Use this Supplier portal activity to review the forecasted 3M demand.



| Step | Action   |
|------|--|
| 1.   | Upon logging into the SAP SNC system, the <i>Alert Monitor</i> displays.<br><br>In this example leave all <i>Selection</i> criteria blank to display all Alerts. |

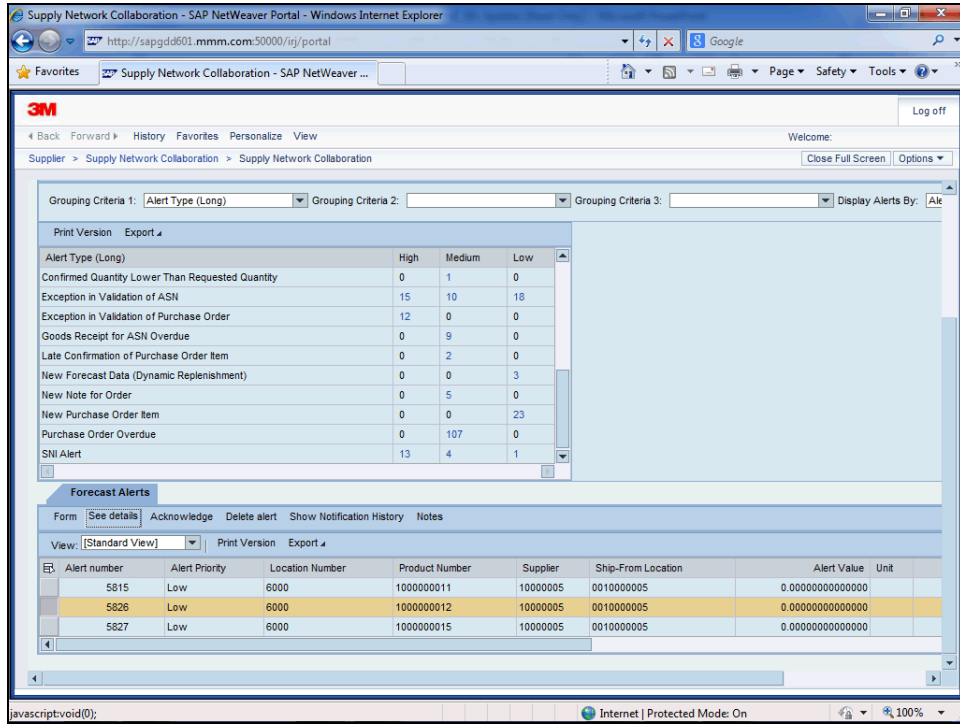


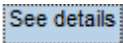
| Step | Action  |
|------|---|
| 2.   | Click <b>Go</b> .<br>  |
| 3.   | Scroll down to view the Alerts.   |
| 4.   | Click the <b>Vertical</b> scroll bar.   |
| 5.   | In the <i>Statistical View</i> section, scroll down to <b>New Forecast Data</b> .<br><br>To view the forecast data, click the number link in the <b>Alert Type</b> status column: <b>High</b> , <b>Medium</b> , or <b>Low</b> . |
| 6.   | Click the <b>Vertical</b> scroll bar.   |

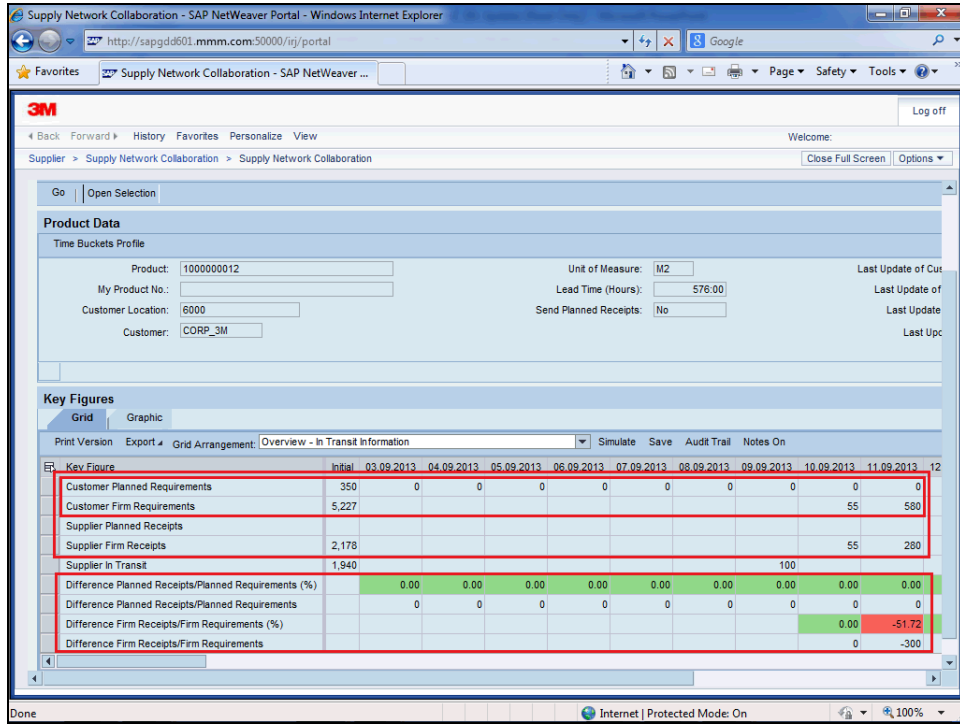
| Step | Action   |
|------|--|
| 7.   | In this example, there are 3 items under <b>Low</b> and no items in <b>High</b> or <b>Medium</b> . |



| Step | Action   |
|------|--|
| 8.   | Click <b>3</b> .<br>      |
| 9.   | Scroll down to view the list of new Forecast Alerts.   |
| 10.  | Click the <b>Vertical</b> scroll bar.  |
| 11.  | Locate and select the Forecast Alert to view.  |
| 12.  | Click the row header.<br> |



| Step | Action  |
|------|---|
| 13.  | Click <b>See details</b> .<br> |
| 14.  | The forecast information displays.<br><br>Scroll to the right to view more information.                           |



| Step | Action                                      |
|------|---|
| 15.  | Click the <b>Horizontal</b> scroll bar.     |
| 16.  | Click the <b>Horizontal</b> scroll bar.     |
| 17.  | Scroll back to the left to access the tabs. |
| 18.  | Click the <b>Horizontal</b> scroll bar.     |
| 19.  | Display the information as a graph.         |

Supply Network Collaboration (Supplier View) - Windows Internet Explorer

http://sapgd1502.mmm.com:8000/sap/bc/webdynpro/srf/snc\_s?sap-language=EN

Supply Network Collaboration (Supplier View)

### Order Forecast Details - Product View

Supply Network

Exceptions Demand Release Purchase Order Replenishment Work Order SMI Delivery Invoice Quality Master Data Tools

Selection Area

Go | Open Selection

Product Data

Time Buckets Profile

Product: 1000000012 Unit of Measure: M2 Last Update of Customer: [blank]

My Product No.: [blank] Lead Time (Hours): 576.00 Last Update of Customer: [blank]

Customer Location: 6000 Send Planned Receipts: No Last Update of Supplier: [blank]

Customer: CORP\_3M Last Update of Supplier: [blank]

Key Figures

Grid Graphic

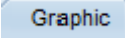
Print Version Export Grid Arrangement: Overview - In Transit Information Simulate Save Audit Trail Notes On

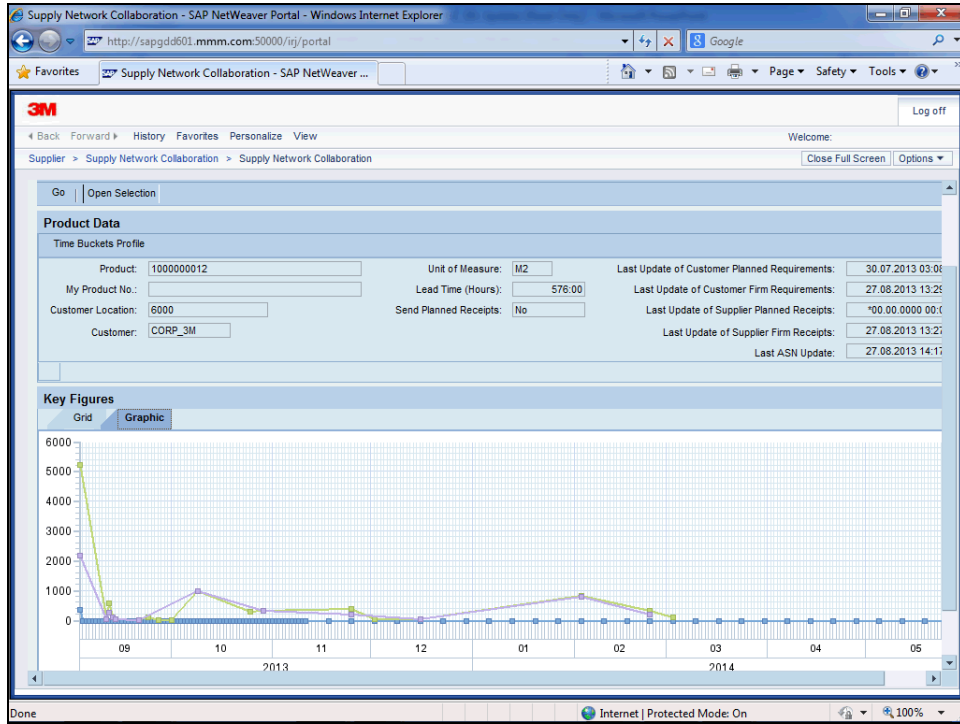
| Key Figure   | Initial | 03.09.2013 | 04.09.2013 | 05.09.2013 | 06.09.2013 | 07.09.2013 | 08.09.2013 | 09.09.2013 | 10.09.2013 | 11.09.2013 | 12.09.2013 |
|--|---------|------------|------------|------------|------------|------------|------------|------------|------------|------------|------------|
| Customer Planned Requirements                        | 350     | 0          | 0          | 0          | 0          | 0          | 0          | 0          | 0          | 0          | 0          |
| Customer Firm Requirements                           | 5,227   |            |            |            |            |            |            |            | 55         | 580        |            |
| Supplier Planned Receipts                            |         |            |            |            |            |            |            |            |            |            |            |
| Supplier Firm Receipts                               | 2,178   |            |            |            |            |            |            |            | 55         | 280        |            |
| Supplier In Transit                                  | 1,940   |            |            |            |            |            |            | 100        |            |            |            |
| Difference Planned Receipts/Planned Requirements (%) |         | 0.00       | 0.00       | 0.00       | 0.00       | 0.00       | 0.00       | 0.00       | 0.00       | 0.00       | 0.00       |
| Difference Planned Receipts/Planned Requirements     |         | 0          | 0          | 0          | 0          | 0          | 0          | 0          | 0          | 0          | 0          |
| Difference Firm Receipts/Firm Requirements (%)       |         |            |            |            |            |            |            |            | 0.00       | -51.72     |            |
| Difference Firm Receipts/Firm Requirements           |         |            |            |            |            |            |            |            | 0          | -300       |            |

Done

Internet | Protected Mode: On

100%

| Step | Action   |
|------|--|
| 20.  | Click the <b>Graphic</b> tab.<br> |
| 21.  | The <i>Graphic</i> displays.   |



| Step | Action  |
|------|---|
| 22.  | You have completed this activity.<br><b>End of Procedure.</b> |