

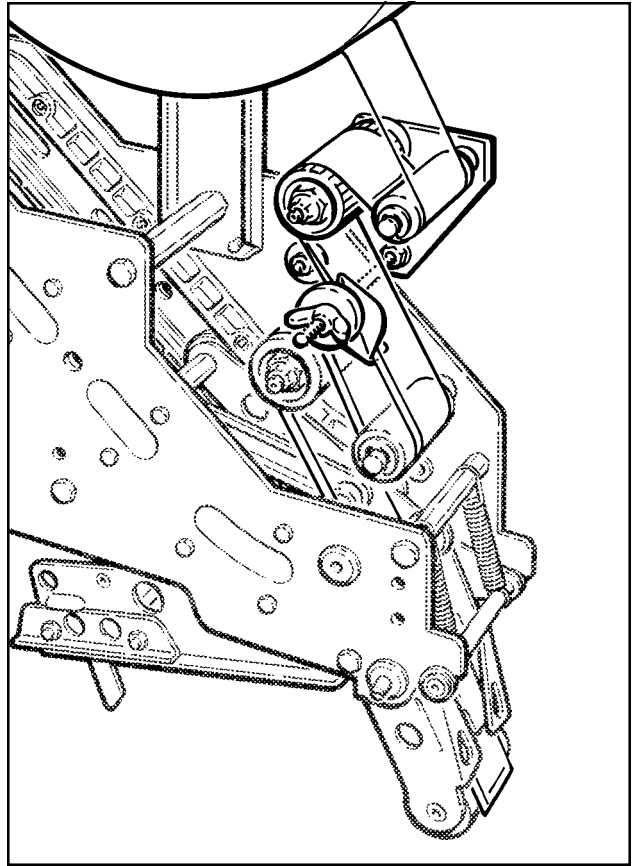
Instructions and Parts List

3M-Matic™

Tape Edge Fold Kit for: AccuGlide™ II STD

Upper and Lower Taping Heads

Kit Part Number	Fits AccuGlide II STD
78-8095-4854-4	2 Inch Upper Head
78-8095-4855-1	2 Inch Lower Head
78-8095-4852-8	3 Inch Upper Head
78-8095-4853-6	3 Inch Lower Head



**Tape Edge Fold Kit installed on
AccuGlide™ II STD 2 Inch Upper Taping Head**

Purpose of Kit

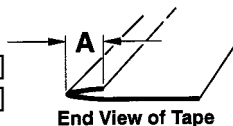
The 3M-Matic™ Tape Edge Fold Kit attached to upper and/or lower AccuGlide™ II taping heads, folds one edge of the tape strip over and provides a starting edge for removal of the tape strip. The fold can be adjusted to a minimum fold of approximately 3 mm [1/8 inch]. The kit is completely assembled and is easily attached to either upper or lower taping heads.

Note: This kit to be used only with single planetary wound tape rolls. It is not to be used in conjunction with spliced tape products or tape dispensed through splice producing devices such as the 3M-Matic™ Continuous Taping System.

Specifications

Tape Fold Over:
(Dimension "A")

- Minimum – 3 mm [1/8 in.]
- Maximum – 6 mm [1/4 in.]



Tape Roll Maximum Diameter:
355 mm [14 in.] with standard tape drum mounting on taping head.

Attachment Weight:
Packaged – 1.1 kg [2-1/2 lbs.]
Unpackaged – 0.7 kg [1-1/2 lbs.]

Tape Edge Fold Kit consists of:

Qty.	Description
1	Edge Fold Assembly
1	Capscrew – Hex Hd, M6 x 16
1	Nut
1	Plain Washer – M6
1	Fender Washer – M6

Installation

Notes:

1. Installation shown is on upper taping head. Installation on lower head is a mirror image of upper head.
2. Most installations on upper taping heads can be done without removing taping head from case sealer.
3. Installation on lower taping head is easier with taping head removed from case sealer.

1. Tension roller on taping head must be removed to install edge fold kit. Mark position of roller in slot so it can be replaced in same relative position when installing edge fold kit.

Remove M6 x 12 hex head capscrew and plain washer that fastens tension roller to taping head frame and remove tension roller assembly. See Figure 1.

2. Attach edge fold assembly to back side of taping head frame with M6 x 12 hex head capscrew (screw that held tension roller to frame in Step 1), M6 plain washer, M6 fender washer and M6 hex nut as shown in Figure 2. Before tightening capscrew, be sure slots in edge fold assembly and slots in taping head are lined up together.

3. Attach tension roller assembly to taping head with M6 x 16 hex head capscrew (supplied with kit), and M6 plain washer. Install in same position it was before removal in Step 1. See Figure 3.

Loosen adjustment nut on this tension roller so roller is "free-wheeling" as tension roller on edge fold kit is now used to apply tape tension.

Note – These illustrations show taping head set to apply 70 mm [2-3/4 inch] tape legs. If taping head was adjusted to apply 50 mm [2 inch] tape legs, tension roller would be mounted in other slotted hole according to machine manual instructions.

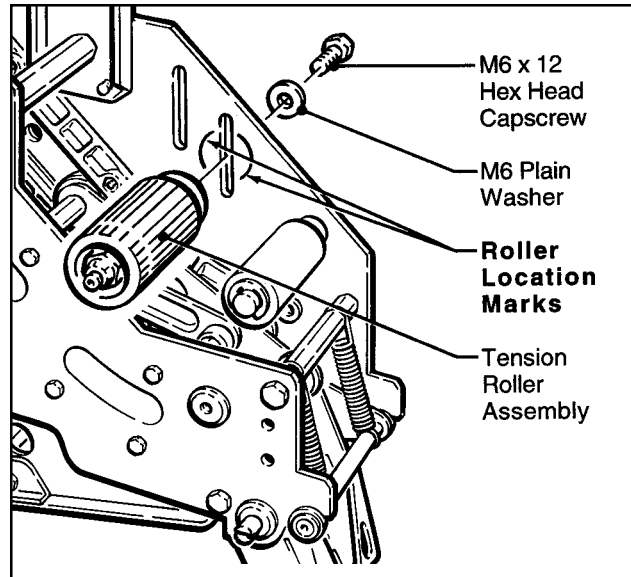


Figure 1

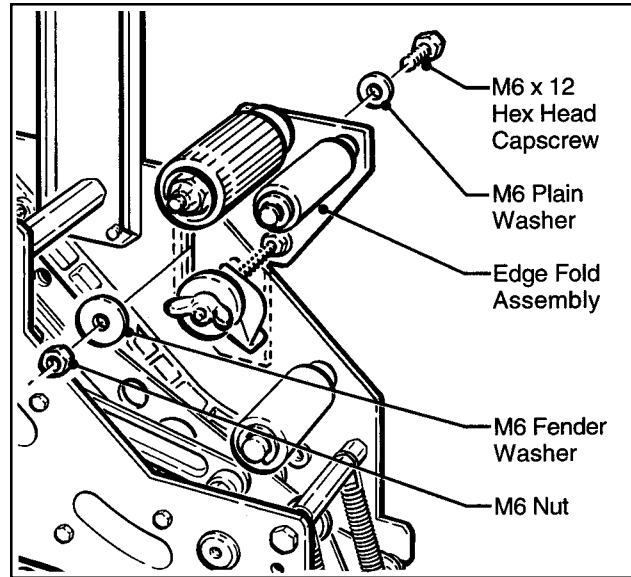


Figure 2

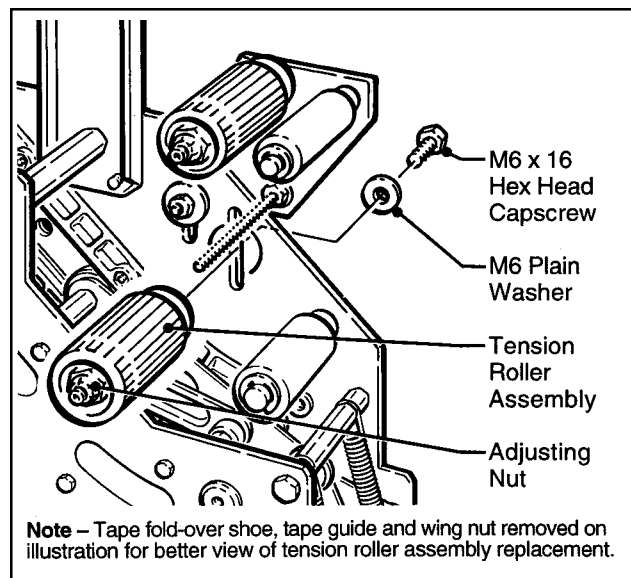


Figure 3

Installation (Continued)

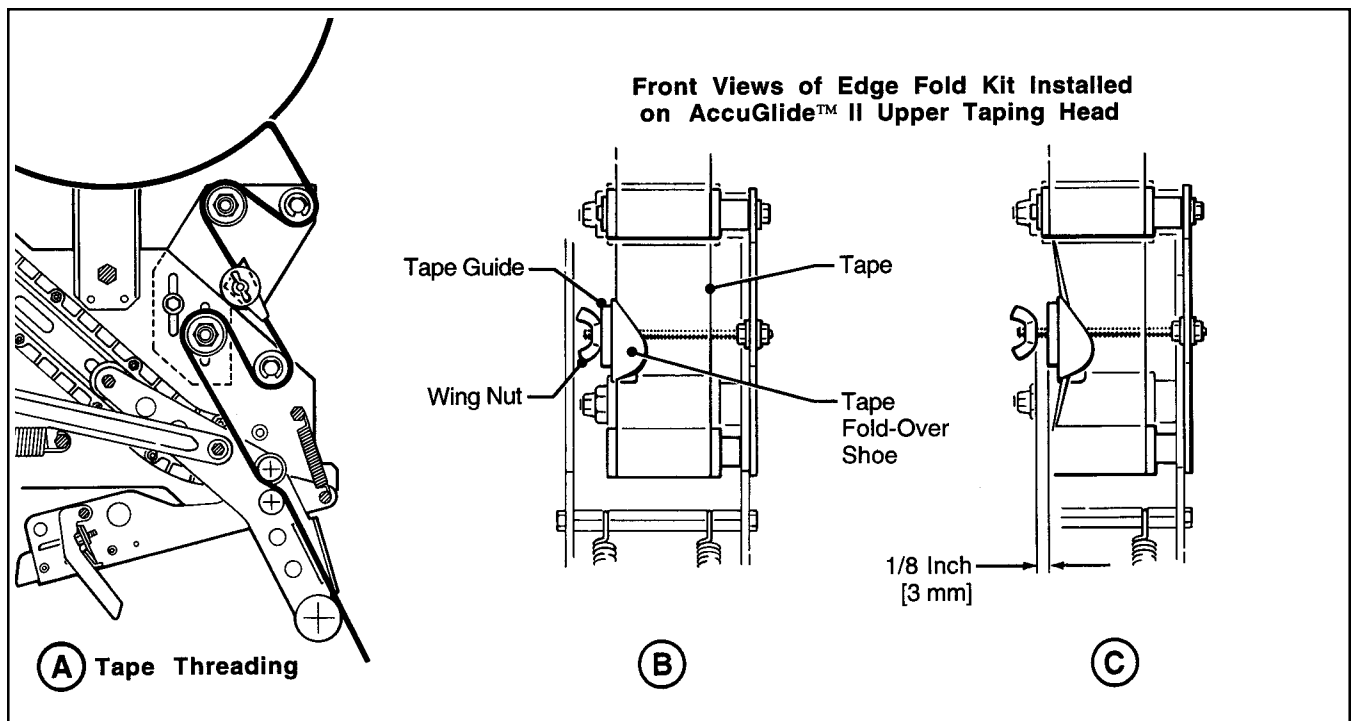


Figure 4

- Adjust wing nut, tape guide and tape fold-over shoe out so fold-over shoe does not interfere with alignment of tape when tape is threaded through taping head.

Thread tape through edge fold kit and taping head. See Figure 4A.

- Adjust tape fold-over shoe for desired tape fold-over.

To obtain a minimum fold of 3 mm [1/8 inch], turn tape guide and wing nut in until tape fold-over shoe touches tape. See Figure 4B. Then, while holding wing nut in position for reference point, turn tape guide in 3 mm [1/8 inch] as shown in Figure 4C. Hold tape guide and turn wing nut in against tape guide and tighten to lock tape guide/tape fold-over shoe in place.

Note – For a wider fold-over, adjust shoe in to obtain desired fold-over.

- Start fold by pinching tape just below tape fold-over shoe with an approximate 3 mm [1/8 inch] fold as shown in Figure 5.
- Run several boxes through taping head/case sealer to check tape fold-over. Once fold is started, shoe can be adjusted in (larger fold) or out (smaller fold) to obtain the desired fold-over.

WARNING – DO NOT adjust tape fold-over while taping head/case sealer is operating. Shut off case sealer electrical power when adjusting shoe position and restore power, run boxes, to check fold. Severe personal injury could occur if hands are caught in tape, taping head or case sealer components.

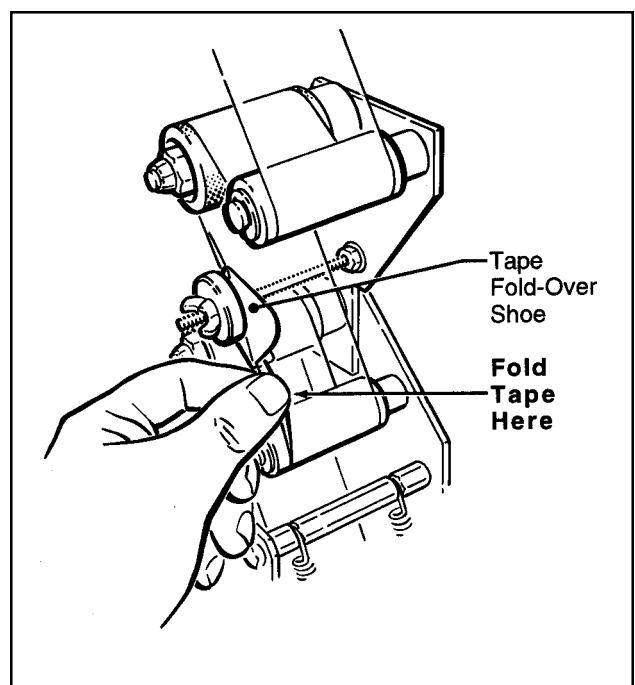
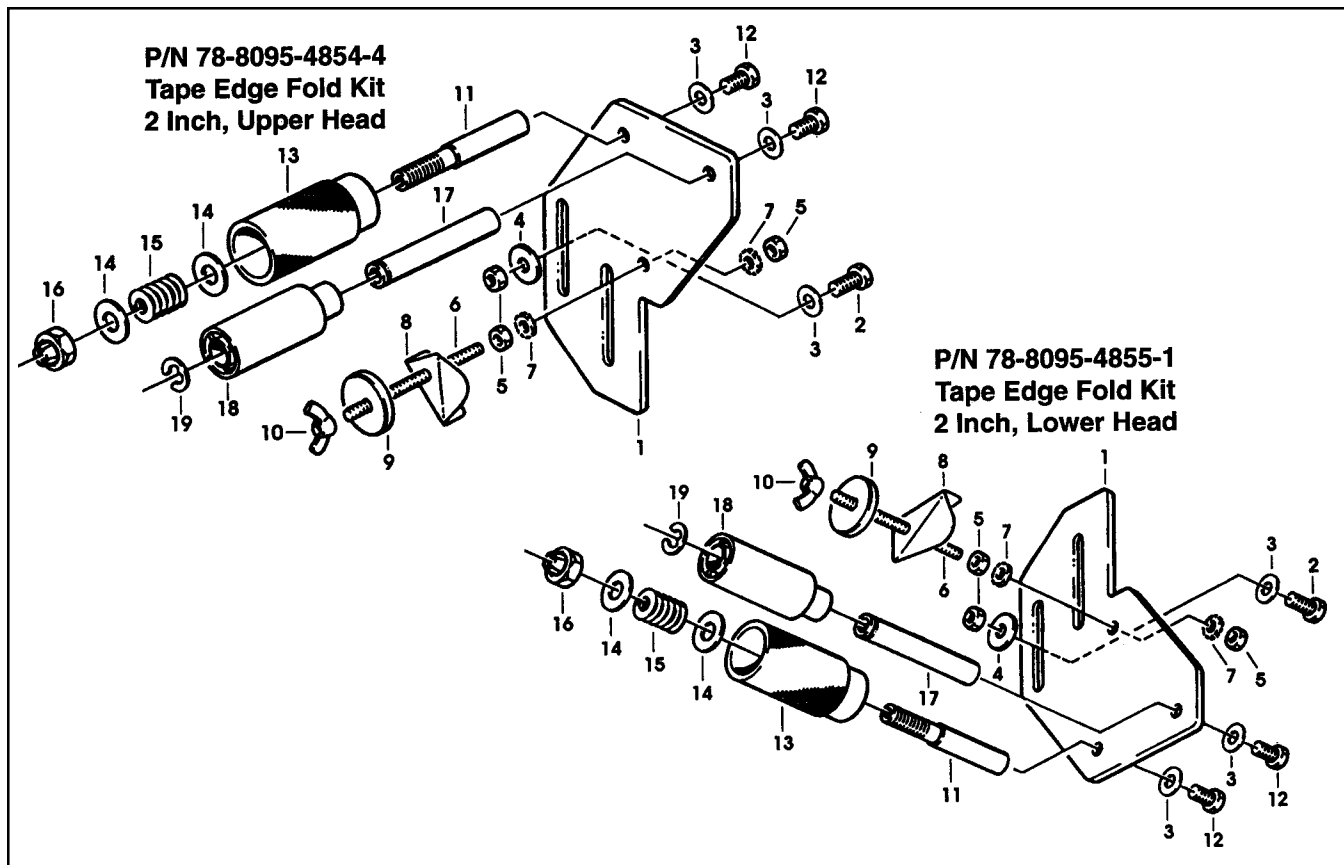


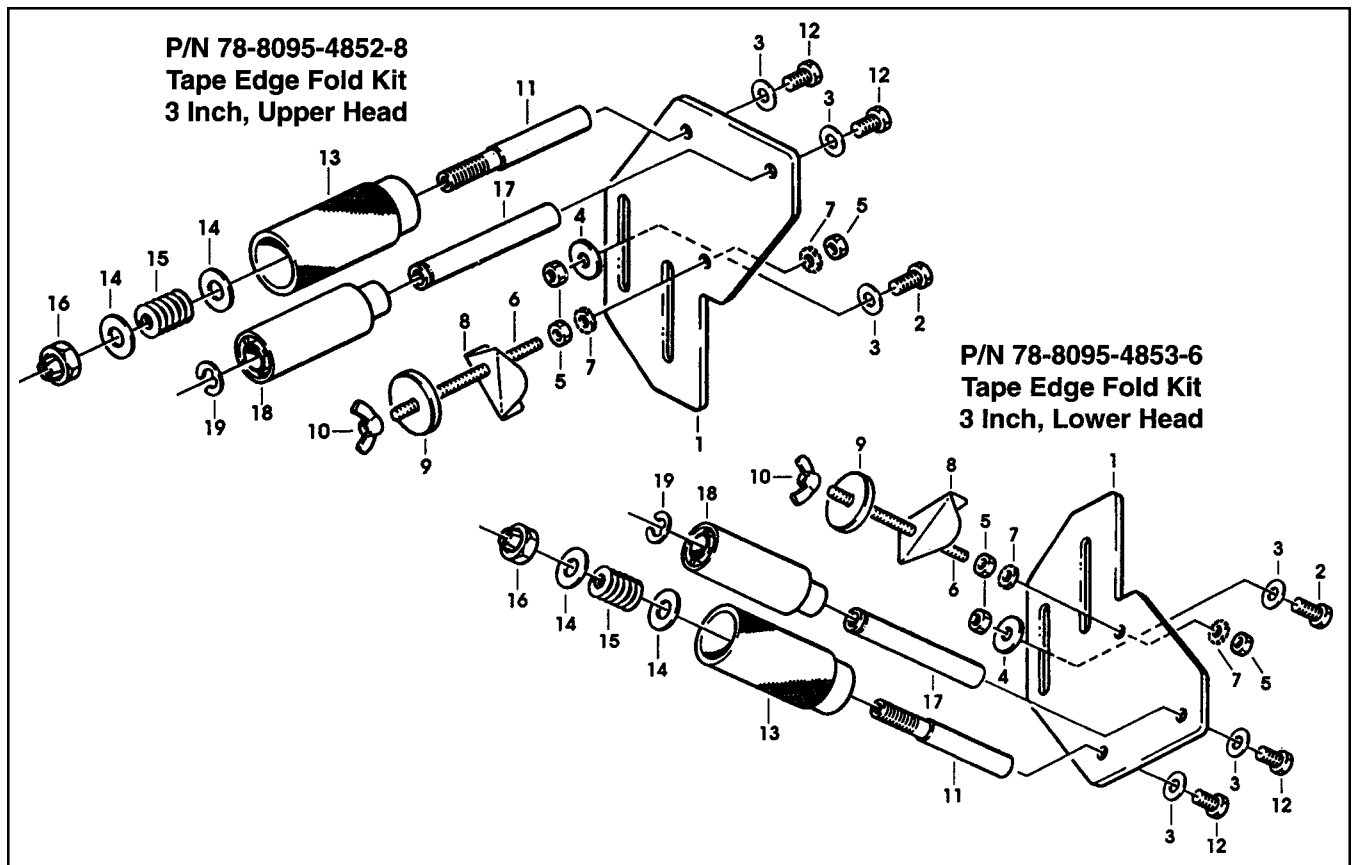
Figure 5

Parts Drawing /List – 2 Inch Tape Edge Fold Kit



Ref. No.	3M Part Number	Description
	78-8095-4854-4	Tape Edge Fold Kit – 2 Inch, Upper Head
	78-8095-4855-1	Tape Edge Fold Kit – 2 Inch, Lower Head
1	78-8095-1066-8	Plate – Mounting
2	78-8032-0375-7	Screw – Hex Hd, M6 x 16 Lg
3	26-1000-0010-3	Washer – Plain, M6
4	78-8042-2919-9	Washer – Triple, M6
5	78-8010-7418-4	Nut – Hex, M6
6	78-8094-6173-0	Stud – M6 x 95 Lg
7	78-8094-6166-4	Washer – Star, M6
8	78-8095-1075-9	Shoe – Tape Fold-Over, Upper Head
	78-8094-6172-2	Shoe – Tape Fold-Over, Lower Head
9	78-8098-9169-6	Guide – Tape
10	26-1011-8928-5	Nut – Wing, M6
11	78-8052-6564-8	Shaft – Tension Roller
12	26-1003-5828-7	Screw – Hex Hd, M6 x 12 Lg
13	78-8052-6565-5	Roller – Tension, Upper Head
	78-8052-6606-7	Roller – Tension, Lower Head
14	78-8052-6566-3	Washer – Friction
15	78-8052-6567-1	Spring – Compression
16	78-8017-9077-1	Nut – Self-Locking, M10
17	78-8052-6568-9	Shaft – Wrap Roller
18	78-8052-6569-7	Roller – Wrap
19	26-1000-1613-3	Ring – Retaining

Parts Drawing /List – 3 Inch Tape Edge Fold Kit



Ref. No.	3M Part Number	Description
	78-8095-4852-8	Tape Edge Fold Kit – 3 Inch, Upper Head
	78-8095-4853-6	Tape Edge Fold Kit – 3 Inch, Lower Head
1	78-8095-1066-8	Plate – Mounting
2	78-8032-0375-7	Screw – Hex Hd, M6 x 16 Lg
3	26-1000-0010-3	Washer – Plain, M6
4	78-8042-2919-9	Washer – Triple, M6
5	78-8010-7418-4	Nut – Hex, M6
6	78-8094-6171-4	Stud – M6 x 120 Lg
7	78-8094-6166-4	Washer – Star, M6
8	78-8095-1075-9	Shoe – Tape Fold-Over, Upper Head
	78-8094-6172-2	Shoe – Tape Fold-Over, Lower Head
9	78-8098-9169-6	Guide – Tape
10	26-1011-8928-5	Nut – Wing, M6
11	78-8054-8796-0	Shaft – Tension Roller
12	26-1003-5828-7	Screw – Hex Hd, M6 x 12 Lg
13	78-8054-8797-8	Roller – Tension, Upper Head
	78-8054-8817-4	Roller – Tension, Lower Head
14	78-8052-6566-3	Washer – Friction
15	78-8052-6567-1	Spring – Compression
16	78-8017-9077-1	Nut – Self-Locking, M10
17	78-8054-8798-6	Shaft – Wrap Roller
18	78-8054-8799-4	Roller – Wrap
19	26-1000-1613-3	Ring – Retaining

How To Order Replacement Parts

1. Refer to Parts Illustration to find part needed and reference number.
2. Refer to parts list for correct part number.
3. Order by **part number, description, and quantity required.**
4. Replacement parts and part prices available direct from:

**3M/Tape Dispenser Parts
241 Venture Drive
Amery, WI 54001-1325**

**800/344 9883
FAX #715/268 8153**

**Minimum billing on parts orders will be \$25.00.
Replacement parts prices available on request.**

**\$10.00 restocking charge per invoice on
returned parts.**

**Note: Outside U.S. contact the local 3M
subsidiary for parts ordering information.**

Equipment Warranty and Limited Remedy: THE FOLLOWING WARRANTY IS MADE IN LIEU OF ALL OTHER WARRANTIES, EXPRESS OR IMPLIED, INCLUDING, BUT NOT LIMITED TO, THE IMPLIED WARRANTY OF MERCHANTABILITY, THE IMPLIED WARRANTY OF FITNESS FOR A PARTICULAR PURPOSE AND ANY IMPLIED WARRANTY ARISING OUT OF A COURSE OF DEALING, A CUSTOM OR USAGE OF TRADE:

3M warrants that its **3M-Matic™ Tape Edge Fold Kit** will be free from defects for two (2) years after delivery. If any part is proved to be defective within the warranty period, then the exclusive remedy and 3M's and seller's sole obligation shall be, at 3M's option, to repair or replace the part, provided the defective part is returned immediately to 3M's factory or an authorized service station designated by 3M. A part will be presumed to have become defective after the warranty period unless the part is received or 3M is notified of the problem no later than five (5) calendar days after the warranty period. If 3M is unable to repair or replace the part within a reasonable time, then 3M, at its option, will replace the equipment or refund the purchase price. 3M shall have no obligation to provide or pay for the labor required to install the repaired or replacement part. 3M shall have no obligation to repair or replace: (1) those parts failing due to operator misuse, carelessness, or due to any accidental cause other than equipment failure, or (2) parts failing due to non-lubrication, inadequate cleaning, improper operating environment, improper utilities or operator error.

Limitation of Liability: 3M and seller shall not be liable for direct, indirect, special, incidental or consequential damages based upon breach of warranty, breach of contract, negligence, strict liability or any other legal theory.

The foregoing Equipment Warranty and Limited Remedy and Limitation of Liability may be changed only by a written agreement signed by authorized officers of 3M and seller.



3M Packaging Systems Division
3M Center, Building 220-8W-01
St. Paul, MN 55144-1000

"3M Matic" and "AccuGlide" are trademarks of
3M, St. Paul, MN 55144-1000

Litho U.S.A

© 3M 1999 44-0009-1884-5(B99.0.)