

3M Science.
Applied to Life.™

Victory Series™
Superior Fit Buccal Tubes



Superior Fit
Outstanding Comfort
Low Profile Tubes

APC™ Flash-Free
Adhesive Coated Appliance System

APC™ II
Adhesive Coated Appliance System

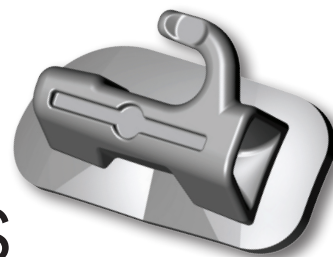
MBT™
Versatile+ Appliance System

“We all loved the design... The fluted/flared mesial opening **made wire insertion simple**, even in difficult mesially rotated molars.

The tube is **easily held for placement** during bonding... **Extremely secure** and very unlikely to slip or spin as occurs frequently with other tubes we have used.”

Dr. Ross Taddeo
Orlando, Florida

Reliability and improvements you can see and feel.



Developed with user insight and testing.

Introducing Victory Series™ Superior Fit Buccal Tubes – a new generation of the popular and widely used Victory Series™ Buccal Tubes from 3M. Designed with extensive user input, these tubes take advantage of modern computer design tools to offer performance enhancements you can both see and feel when you place them.

- Large compound contour base for superior fit
- Exclusive “contoured funnel” design for easy wire insertion
- Low profile and flush-mount hook for patient comfort
- Improved gripping and handling features
- Available with APC™ Adhesive coating

“Being a huge advocate of only banding lower molars, I was very skeptical of even trying a bonded bracket on the lower 6's. The Victory Series™ Superior Fit Buccal Tubes just fit so well into the occlusion, and having them fit right into our pre-coated bonding system, made it seamless. Overall, I could not be happier, and I am sold on using lower bonded 6's in my new bonding regimen.”

– Dr. Scott McCranel
West Palm Beach, FL



Key Benefits

Buccal surface of tube is parallel to the torque of the tube for ease of holding and placement

Gripping notch for improved handling

Mesial-Distal surfaces are parallel for easier gripping and holding

Contoured funnel entry for smooth and easy wire insertion; designed to reduce binding and notching

Sleek, low profile, tapered body to reduce occlusal interference and for patient comfort

Buccal recess to aid with seating

Low profile, bendable flush-mount hook for patient comfort

Mesial-Distal visual alignment mark for ease of positioning and archwire slot referencing

ID dot

Anatomical, compound-contour curvature base for superior fit

Micro-etched, 80-gauge mesh pad

Available APC™ Adhesive Coated Appliance System

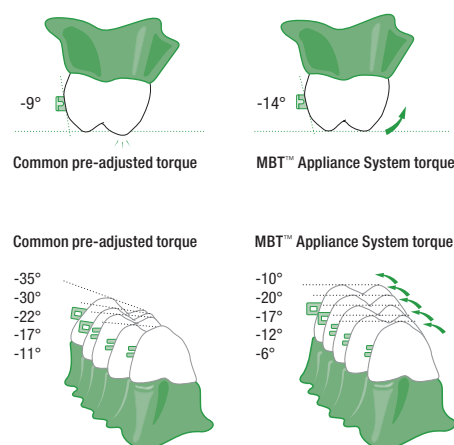
Every practice is challenged to meet the specific treatment needs of each individual patient, while employing standard treatment processes for optimal practice efficiency. Now, both goals are met within one treatment methodology. The MBT™ Versatile+ Appliance System is a combined set of appliances and solutions that work together to provide an efficient means to address all levels of clinical challenges.

Victory Series™ Superior Fit Buccal Tubes are fully compliant with MBT System requirements.

Challenges of Torque Control

- Upper anterior torque loss
- Lower anterior flaring
- Upper posterior buccal rolling
- Lower posterior lingual rolling

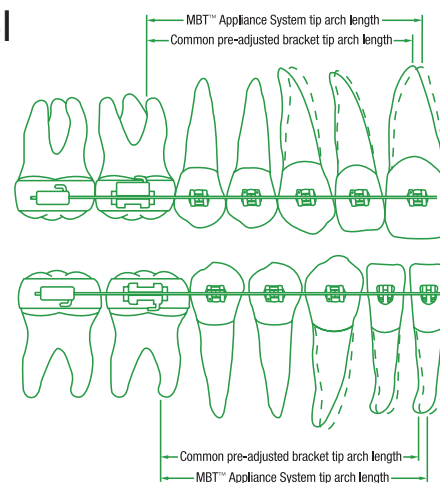
The MBT System's prescription updates the original pre-adjusted appliance values to achieve the desired effective torque expressed on each tooth. Especially when using light, continuous force mechanics, these values are designed to arrive at the desired torque angle without producing inadequate or excessive torque requiring further adjustment. It is a versatile system, offering different torque options to meet the optimal needs of each patient.



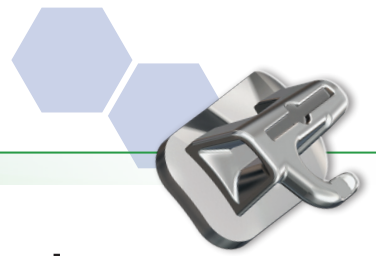
Challenges of Tip and Rotation Control

- Excessive tip in anterior teeth
- Misalignment of cuspid roots
- Inadequate arch length
- Molar intercuspation interference
- Unwanted lower molar distal rotation

The original pre-adjusted appliance overcompensated on tip values to counteract the high forces exerted by the archwire. Current wire technology and sliding mechanics allow the MBT System to include tip values closer to biological norms found in research. This reduces the occurrence of over-tipped crowns that can experience interference and it uprights the roots, reducing crown width and reducing overall arch length. Improved arch length is further achieved through the application of light forces on the molar appliance values, designed for improved anchorage control and reduced distal rotation for a better molar fit.



For more information on the MBT™ Appliance System and its benefits for your treatment success, visit 3M.com/ortho or ask a 3M sales representative.



Victory Series™ Superior Fit Buccal Tubes feature the efficient APC™ Adhesive Coated Appliance System

A Standard for Bonding Ease

3M has set the standard in orthodontic bonding efficiency with the APC™ Adhesive Coated Appliance System, offering fast and reliable bonding and fewer steps than traditional bonding systems. Victory Series™ Superior Fit Buccal Tubes are available with APC™ Flash-Free Adhesive pre-coating or with APC™ II Adhesive, so you and your patients can enjoy the world's most efficient bonding system along with the advantages of Victory Series Superior Fit Buccal Tubes.



*Reference data at 3M.com/ortho.

APC™ Flash-Free
Adhesive Coated Appliance System

Reduced Bonding Steps

APC™ Flash-Free Adhesive System – 5 Steps



APC™ II Adhesive System – 6 Steps

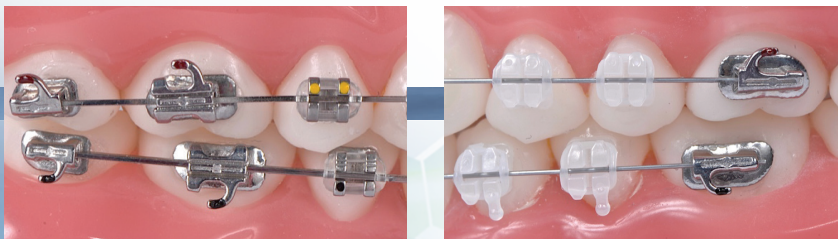


APC™ II
Adhesive Coated Appliance System

Traditional Light Cure Bonding Systems – 11 Steps



*Using Transbond™ Plus Self Etching Primer



3M

Victory Series™ Superior Fit Buccal Tubes



MBT™
Versatile+ Appliance System

MBT™ System Prescription

Upper			Tube Length		0.018 in.		0.022 in.	
Tooth	Type	T/O	inches	mm	L	R	L	R
1st Molar	Single Convertible	-14T/10°	.170	4.3	069-5303	069-5314	069-6303	069-6314
1st Molar	Single Nonconvertible	-14T/10°	.187	4.7	069-5103	069-5114	069-6103	069-6114
1st Molar	Double Convertible	-14T/10°	.170	4.3	069-5153	069-5164	069-6153	069-6164
2nd Molar	Single Nonconvertible	-14T/10°	.147	3.7	069-3103	069-3114	069-4103	069-4114
Lower			Tube Length		0.018 in.		0.022 in.	
Tooth	Type	T/O	inches	mm	L	R	L	R
1st Molar	Single Convertible	-20T/0°	.170	4.3	069-5403	069-5414	069-6403	069-6414
1st Molar	Single Nonconvertible	-20T/0°	.187	4.7	069-5203	069-5214	069-6203	069-6214
1st Molar	Double Convertible	-20T/0°	.170	4.3	069-5253	069-5264	069-6253	069-6264
2nd Molar	Single Nonconvertible	-15T/0°	.147	3.7	069-3203	069-3214	069-4203	069-4214
					Adding Prefix "4" is APC™ Flash-Free Adhesive System – Example: 4069-5303			
					Adding Prefix "3" is APC™ II Adhesive System – Example: 3069-5303			

Check with 3M for availability of APC™ Adhesive Coating.

Roth* Prescription

Upper			Tube Length		0.018 in.		0.022 in.	
Tooth	Type	T/O	inches	mm	L	R	L	R
1st Molar	Single Convertible	-10T/7°	.170	4.3	069-5313	069-5324	069-6313	069-6324
1st Molar	Single Nonconvertible	-10T/7°	.187	4.7	069-5113	069-5124	069-6113	069-6124
1st Molar	Double Convertible	-10T/7°	.170	4.3	069-5163	069-5174	069-6163	069-6174
2nd Molar	Single Nonconvertible	-10T/6°	.147	3.7	069-3113	069-3124	069-4113	069-4124
Lower			Tube Length		0.018 in.		0.022 in.	
Tooth	Type	T/O	inches	mm	L	R	L	R
1st Molar	Single Convertible	-25T/6°	.170	4.3	069-5413	069-5424	069-6413	069-6424
1st Molar	Single Nonconvertible	-25T/6°	.187	4.7	069-5213	069-5224	069-6213	069-6224
1st Molar	Double Convertible	-25T/6°	.170	4.3	069-5263	069-5274	069-6263	069-6274
2nd Molar	Single Nonconvertible	-30T/6°	.147	3.7	069-3213	069-3224	069-4213	069-4224
					Adding Prefix "4" is APC™ Flash-Free Adhesive System – Example: 4069-5113			
					Adding Prefix "3" is APC™ II Adhesive System – Example: 3069-5113			

Check with 3M on local availability.

*3M version of this prescription. No endorsement by the Doctor is implied.

REFERENCES:

3M Claims DB: 1. "Victory Series™ Superior Fit Buccal Tube bases designed to provide superior tooth/base fit...", S10756. 2. "...advanced contoured base design to better fit a variety of molar surfaces...", S10790. 3. "The optimized base and tube design...enables secure handling of the buccal tube." S10792. 4. "...facilitates ease of seating and positioning.", S10793. 5. "The low profile...is designed to enhance patient comfort.", S10794. 6. "...is designed to avoid occlusal interference.", S10795. 7. "...have a funneled entry for easy wire insertion.", S10797. 8. "The contoured funnel entry...enables smooth wire insertion.", S10798. 9. "The innovative funnel entry...has a smooth transition into the wire slot...", S10799. 10. "...feature and exclusive "contoured funnel" entry for easy wire insertion, designed to eliminate sharp corners and edges that contribute to binding and notching.", S10800. 11. "...have smooth surfaces and rounded corners for patient comfort.", S10801. 12. "...have a rounded, low profile hook design for patient comfort.", S10802. 13. "The position and shape of the hook...was designed for ample area for attachment." S10803. 14. "...are easy to place on the molars", S10844. 15. "In a customer evaluation, participants reported that...lower first molars fit well on a variety of molar contours." S10845. 16. "In an in-vivo evaluation of lower first molar non-convertible...tube length was acceptable for adequate rotation control." S10847. 17. "...have a low profile for patient comfort.", S10848. 18. "The hook...is bendable." S10864. 19. "The features...include: Large compound contour base for superior fit, exclusive contoured funnel design for easy wire insertion, low profile and flush-mount hook for patient comfort, improved gripping and handling features, available with APC™ Adhesive coating." S10865

3M

3M Oral Care
2510 Conway Avenue
St. Paul, MN 55144-1000 USA
Phone 1-800-423-4588
Web 3M.com/ortho

3M Canada
Health Care Division
300 Tartan Dr.
London, ON N5V 4M9 Canada
Phone 1-800-443-1661

3M, APC, MBT, Transbond and Victory Series are trademarks of 3M. Used under license in Canada.
© 3M 2016. All rights reserved.
70-2021-4956-6 1602