

# 3M Pulp & Paper Sourcing Policy

Background for 3M Suppliers



Sustainability  
and You

# Unsustainable Forestry is Impacting our World



<http://www.npr.org/blogs/parallels/2013/05/31/187301981/Battling-Deforestation-In-Indonesia-One-Firm-At-A-Time>



# 3M Pulp & Paper Sourcing Policy

- Applies to 3M Direct Suppliers (Tier 1), flowing upstream
- Additional expectations beyond minimum legal harvesting and other regulatory requirements
- Applies to special & technical product papers, as well as packaging and recycled materials
- Utilizes Forest Conservation principles, including:
  - Managing High Conservation Values
  - Protecting High Carbon Stock forests
- Promotes Sustainable Forestry practices like:
  - Education/training (“Capacity-building”) of suppliers
  - Due Diligence Management System approach
- Requires traceability to source of harvest (i.e. forest)
- Includes social aspects like respect for workers and indigenous peoples’ rights

**See [3M Supplier Direct Pulp & Paper Sourcing Page](#) for  
Policy, Guidance, and  
Additional Training**

# A Sustainability Message from our CEO

*“At 3M, we are working hard to help create a better world for people everywhere. We apply our ingenuity, our expertise and our technology to solve problems innovatively, and with a focus on solutions for the longer term. Sustainability is fundamental to our business philosophy – from product development and manufacturing to how customers use our products.”*

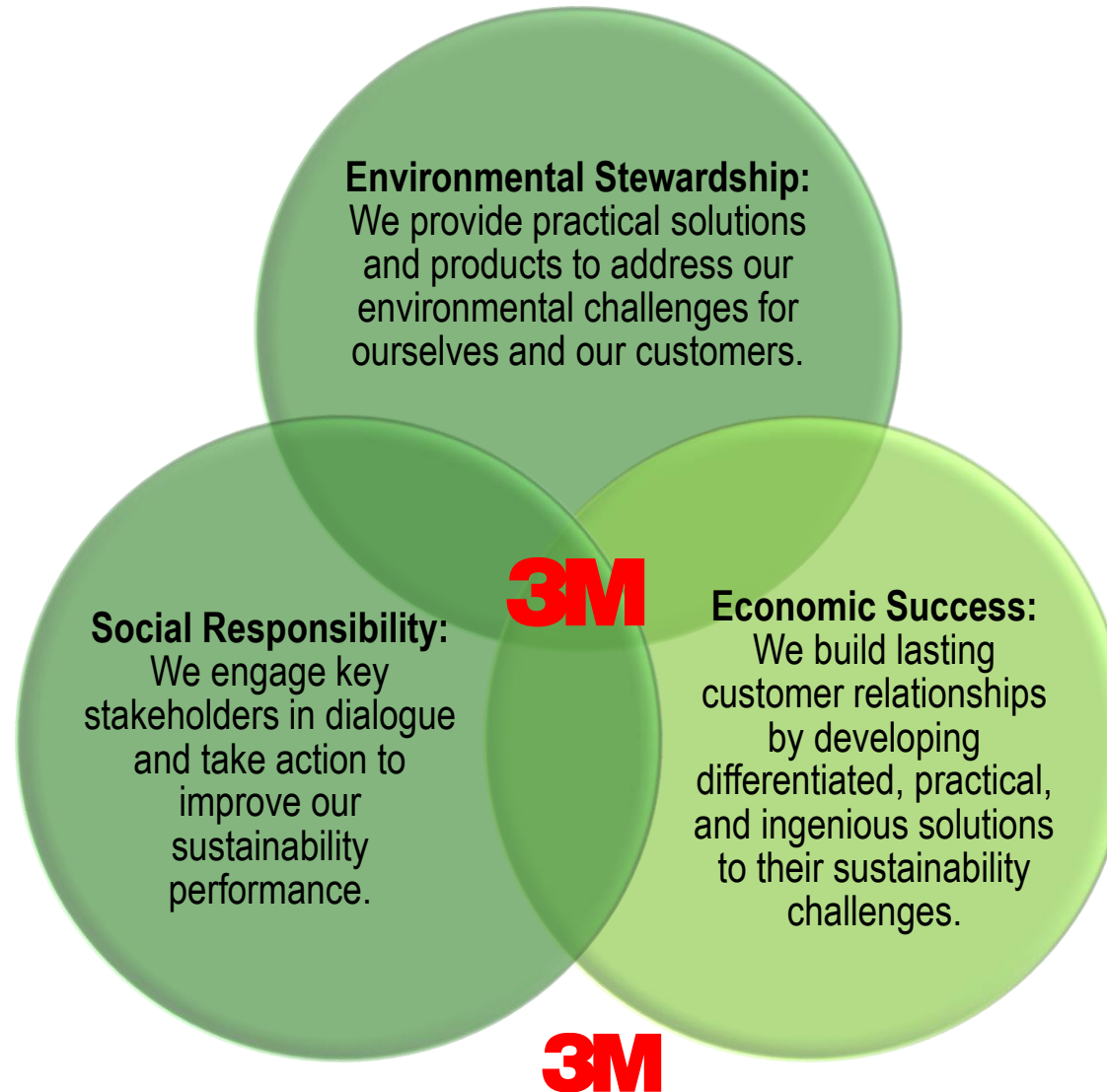
—Inge Thulin Chairman and CEO of 3M



# 3M Products Rely on Forest Products



# Our Approach to Sustainability



# 3M Values

3M's Pulp and Paper Sourcing Policy is directly linked to our corporate values:

Act with uncompromising honesty and integrity in everything we do.

Satisfy our customers with innovative technology and superior quality, value and service.

Respect our social and physical environment around the world.

Value and develop our employees' diverse talents, initiative and leadership.

Earn the admiration of all those associated with 3M worldwide.

Provide our investors an attractive return through sustainable, global growth.

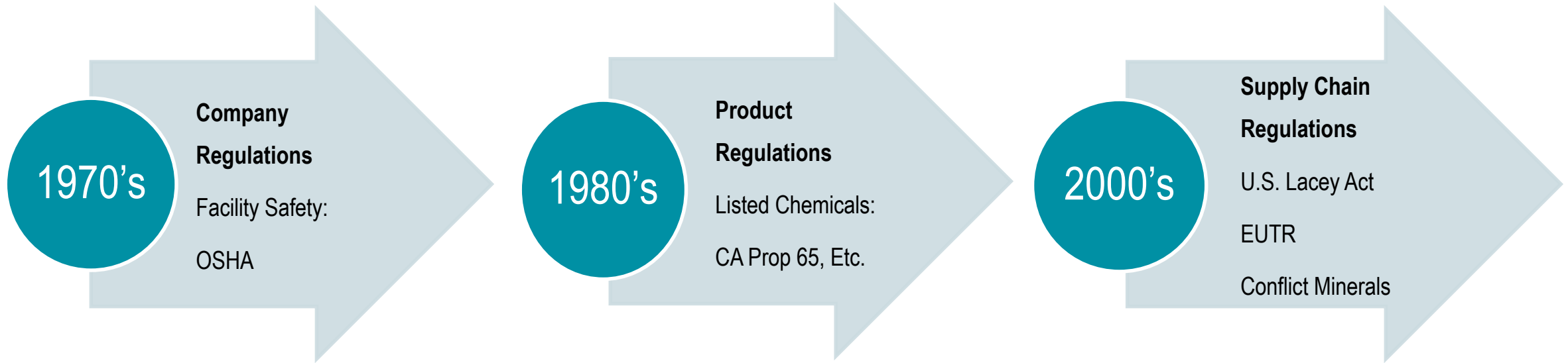


# Evolving Regulatory and Legal Environment

How do you operate facilities?

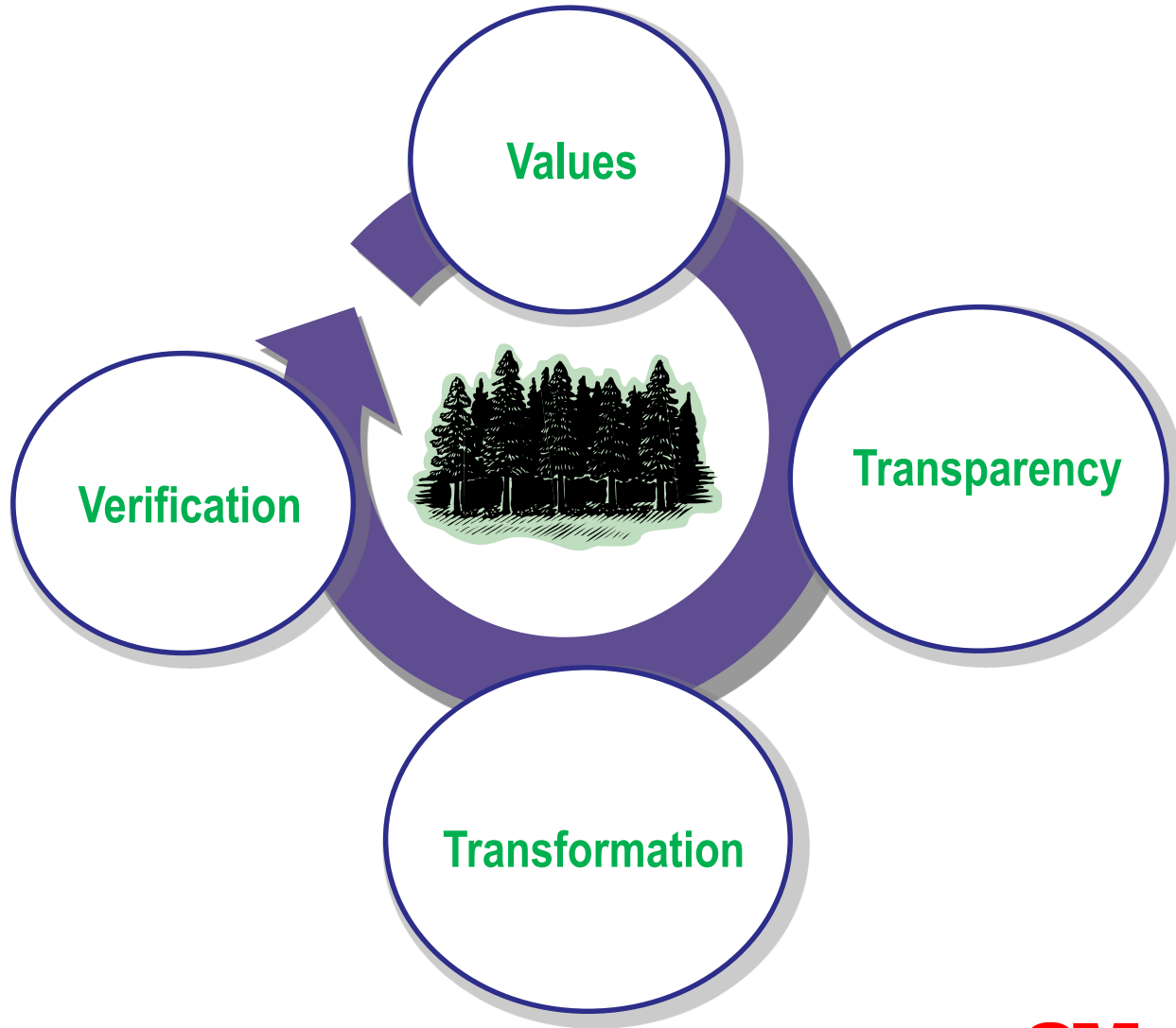
What is in your product?

What is in your supply chain?



**Our goal is to move beyond regulatory compliance toward more sustainable paper sourcing**

# Holistic Approach to Supply Chain Sustainability



**Goal is to move the global forest products supply chain toward sustainability, not to modify or restrict 3M's supply chain**

# Policy Overview

- New policy is based on 3M values, and aligns with the United Nations Global Compact (of which 3M is a signatory)
- Based on leading research in sustainable forest management
- Incorporates social and environmental responsibility aspects into supply chain
- Focuses on traceability to forest source to verify sustainability and responsibility of pulp and paper sources

# Policy Requirements – Legality

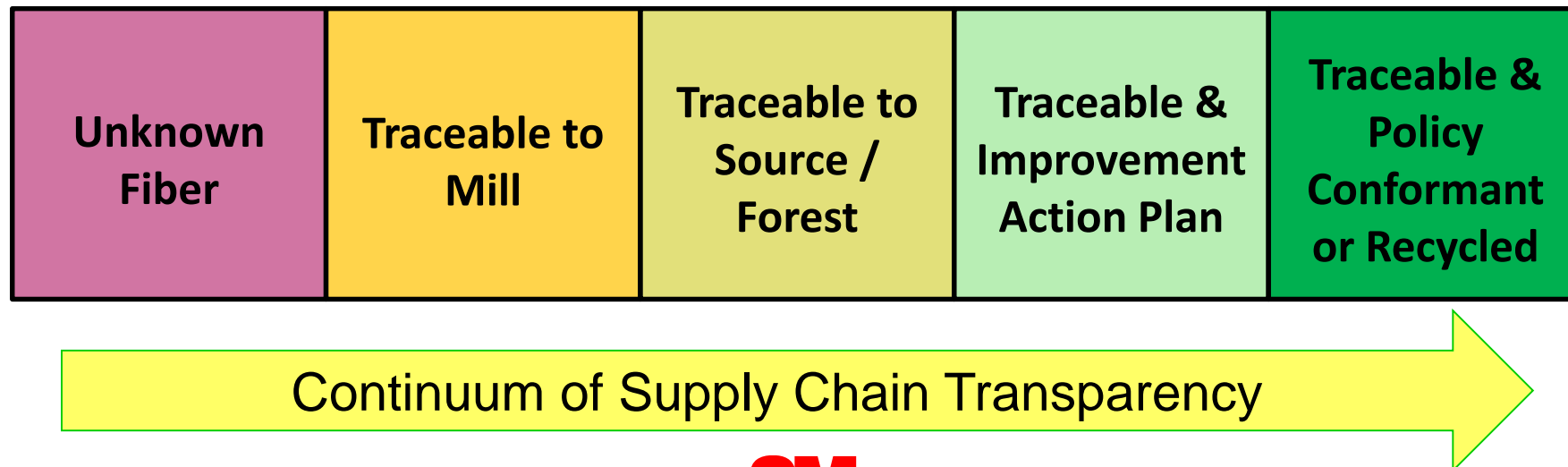
- All pulp and paper products are legally harvested, transported and exported from their country of origin
- Exercise *Due Care* to assure compliance with global legal harvesting laws
  - U.S. Lacey Act
  - European Union Timber Regulation
  - Australian Illegal Logging Prohibition Act
- 3M has long global supply chains, so due diligence must be performed by our suppliers around the world
- Suppliers should adopt a Due Diligence Management System to support legality and policy conformance



See [Legal Harvest Laws Page](#) for additional information

# Policy Requirements – Traceability

- Traceability of our supply chain down to the forest source is a foundational requirement of our Policy
- The United Nations defines **Traceability** as *“The ability to identify and trace the history, distribution, location and application of products, parts and materials, to ensure the reliability of sustainability claims, in the areas of human rights, labor (including health and safety), the environment and anti-corruption.”*



# Policy Requirements

Harvesting should not threaten High Conservation Values (HCVs) including peatland ecosystems and intact forest landscapes

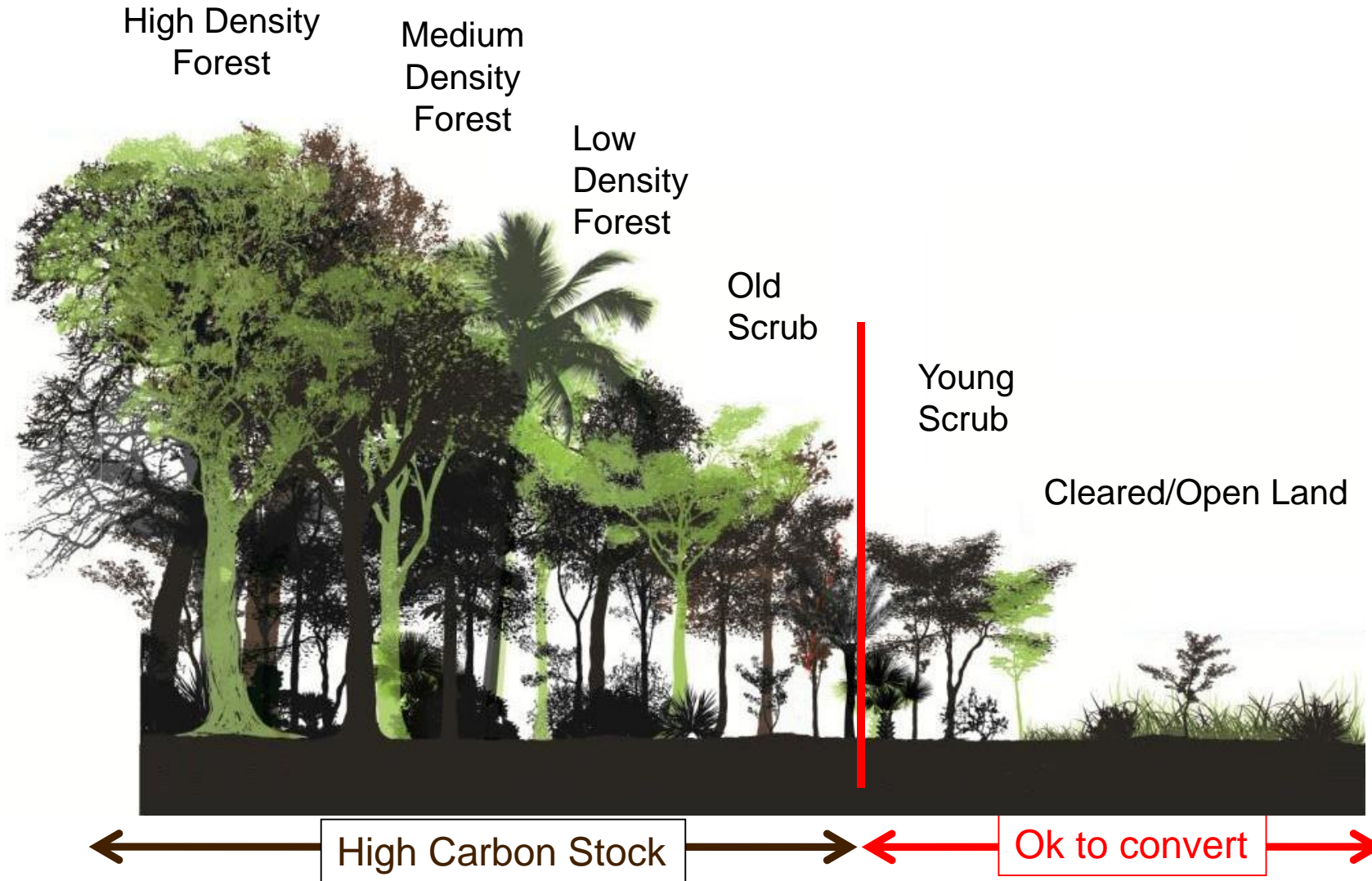


<http://www.worldwildlife.org/stories/amur-tiger-habitat-threatened-by-illegal-logging-of-russian-forests>



**High Conservation Values are biological, ecological, social or cultural values which are considered outstandingly significant or critically important, at the national, regional or global level**

# Policy Requirements – Protect High Carbon Stock Forests



3M does not support “deforestation” – the conversion of natural forests with High Carbon Stock into other land uses or plantations

# Policy Requirements – Workers' and Indigenous Peoples' Rights

Virgin wood fiber must be obtained in a manner that:

- Respects the rights of indigenous peoples and rural communities to the ownership and control of their titled or customary lands, including their right to give or withhold their Free, Prior and Informed Consent (FPIC) to proposed developments on their lands.
- Respects the rights and safety of workers



# Policy Goals

1. **Sustainable Forestry:** 3M wants to leverage its position in the supply chain to promote and incentivize sustainable forest management practices
2. **Responsible Supply Chains:** Prioritize safe work conditions and reduce environmental impacts in the entire supply chain
3. **Collaboration for Change:** We want to partner with the best suppliers who are committed to advancing sustainable forestry and transparent, responsible supply chains
4. **Transparency:** Greater supply chain transparency to better understand pulp and paper supplies down to forest-level for meaningful evaluation of policy conformance



# Policy Implementation

- Supplier Engagement & Education
- Information Gathering – Compliance, Traceability & Policy Conformance
- Risk Assessment & Mitigation
- Material Optimization Projects

# Quick Start Guide

1. Read and understand the 3M Pulp and Paper Sourcing Policy  
[Click here for link](#)
2. Many common questions are answered and terms are defined in the Pulp and Paper Sourcing Policy Conformance Guidance [Click here for link](#)
3. Commit to make reasonable and timely progress in building the necessary systems and tools to conform to the Policy

# *Thank you*

*Together, we can sustain our forests for future generations*

Contact us at [supplierregulatory@mmm.com](mailto:supplierregulatory@mmm.com) with questions