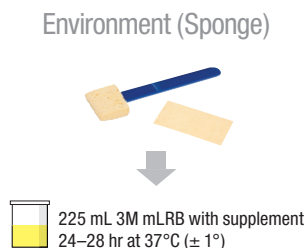


3M™ Molecular Detection System

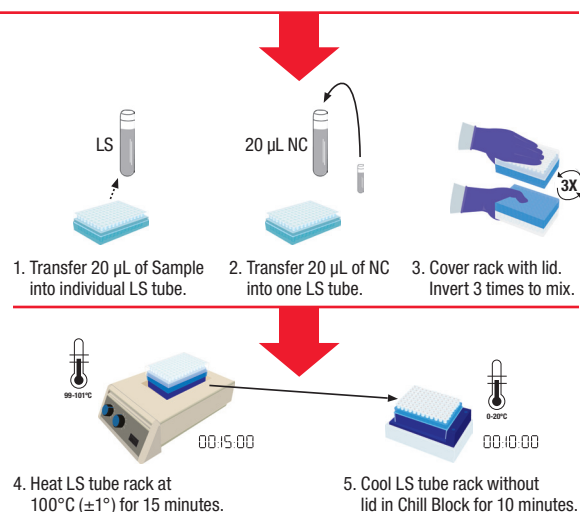
Listeria Protocol Reference Guide

Enrichment



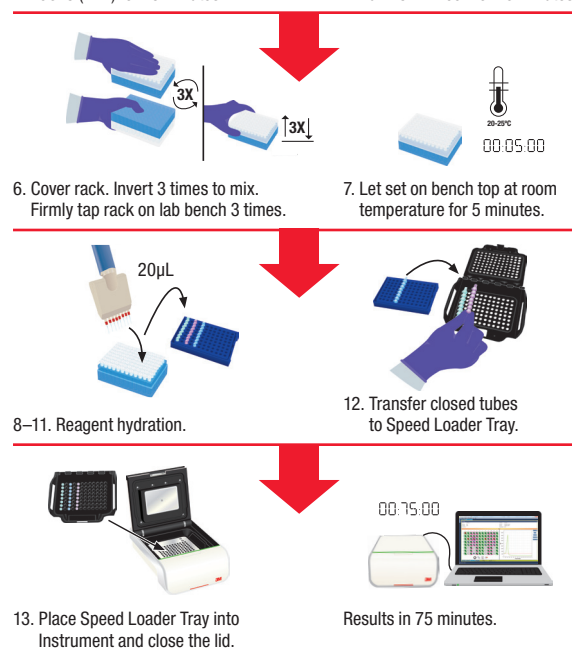
Lysis

1. Transfer 20 µL of Sample into individual Lysis (LS) tube.
2. Transfer 20 µL of Negative Control (NC) into one LS tube.
3. Cover rack of LS tubes with lid and invert 3 times to mix.
4. Place rack with LS tubes into a heating block (100°C ± 1°C) and heat for 15 minutes.
5. Remove the rack of LS tubes from heating block and remove lid. Place rack on Chill Block for 10 minutes.
6. Remove the rack from Chill Block and mix 3 times. Tap rack on bench 3 times.
7. Let set on bench top at room temperature for 5 minutes.



Amplification

8. Transfer 20 µL of each sample lysate into Reagent tubes. Mix by gently pipetting up and down 5 times. Seal tubes with caps.
9. If needed, transfer 20 µL of sample lysate into MC tubes. Mix by gently pipetting up and down 5 times. Seal tubes with caps.
10. Transfer 20 µL NC lysate into one Reagent tube. Mix by gently pipetting up and down 5 times. Seal tube with cap.
11. Transfer 20 µL NC lysate into one Reagent Control (RC) tube. Mix by gently pipetting up and down 5 times. Seal tube with cap.
12. Transfer closed tubes to Speed Loader Tray.
13. Place Speed Loader Tray into instrument and close the lid to start the assay.



3M

Food Safety
3M Center
Building 275-5W-05
St. Paul, MN 55144-1000
USA
1-800-328-6553
www.3M.com/3MMolecularDetectionSystem

3M Canada
Post Office Box 5757
London, Ontario N6A 4T1
Canada
1-800-364-3577

3M is a trademark of 3M.
Used under license in Canada.
Please recycle. Printed in Canada
© 2012, 3M. All rights reserved.
1208-02157E

