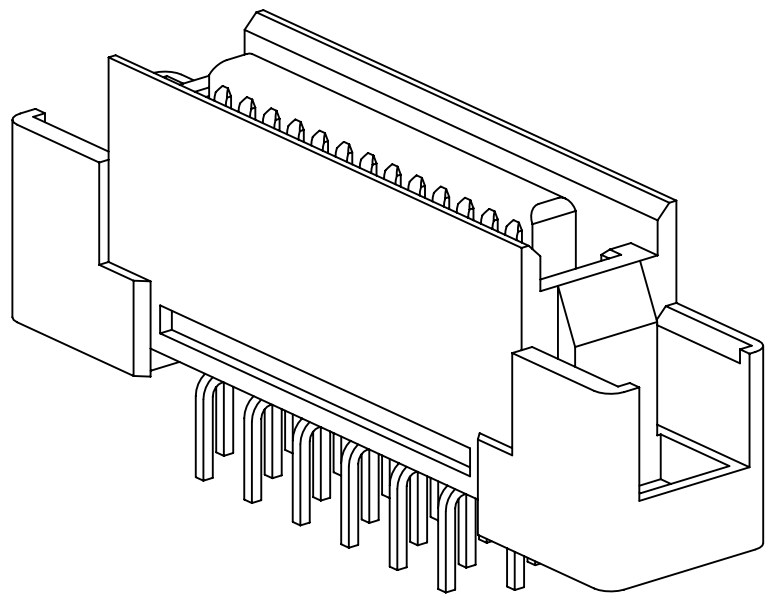
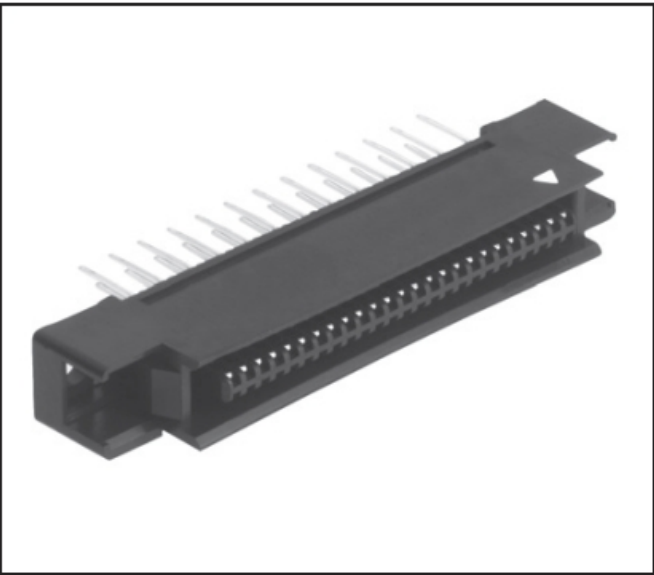
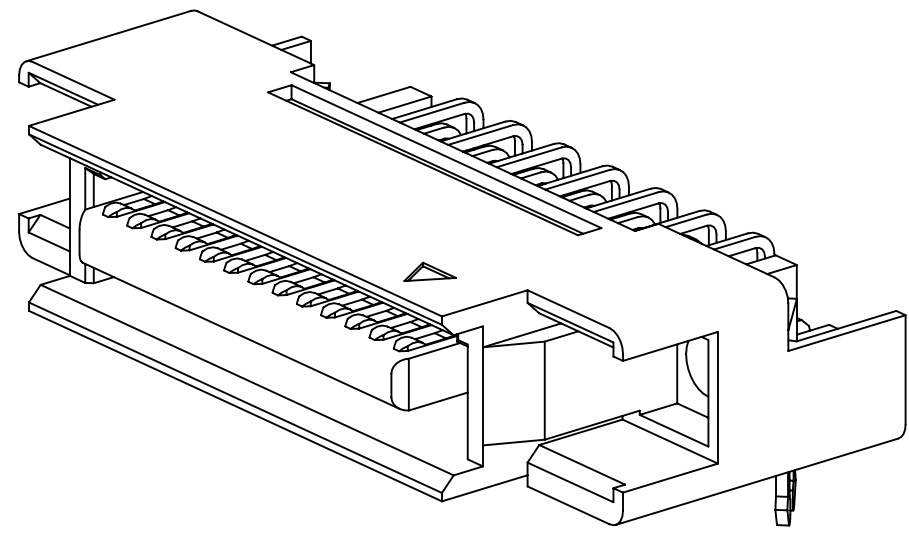


.050" STRAIGHT AND RIGHT ANGLE, THROUGH-HOLE

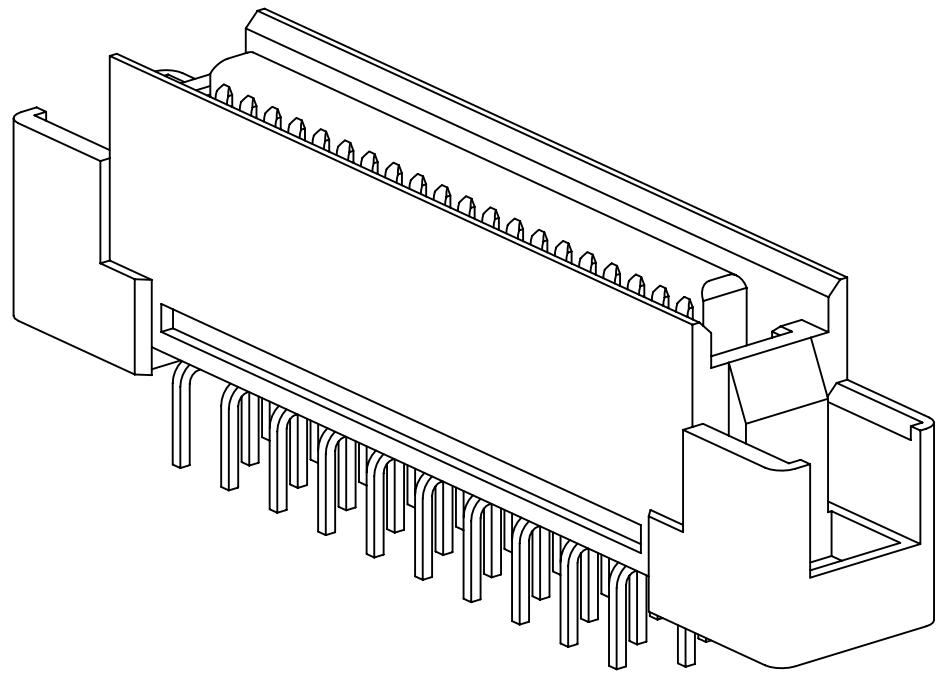
1. REGULATORY INFORMATION:
VISIT 3M.com/regs
2. IN THE EVENT OF CONFLICT
BETWEEN THIS DATA AND THAT
CONTAINED IN THE PRODUCT
SPECIFICATION, THE PRODUCT
SPECIFICATION TAKES PRECEDENT.



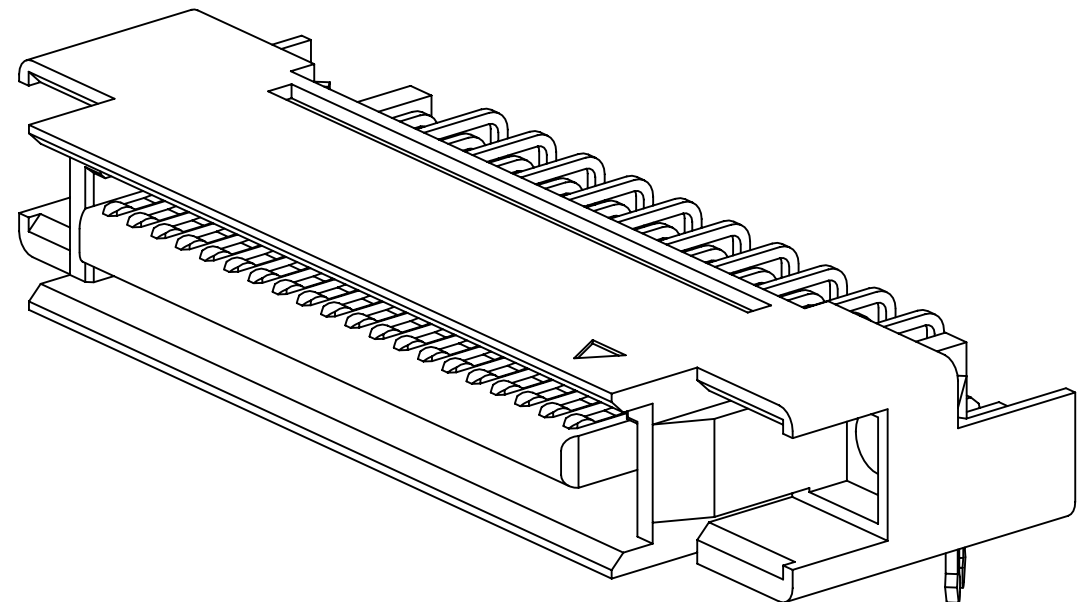
P50E-026P1-S1
STRAIGHT VERSION



P50E-026P1-RR1
RIGHT ANGLE VERSION



P50E-040P1-S1
STRAIGHT VERSION



P50E-040P1-RR1
RIGHT ANGLE VERSION

```

INSULATION :
MATERIAL : GLASS FILLED NYLON
FLAMMABILITY : UL94V-0
COLOR : BLACK
CONTACT :
MATERIAL : COPPER ALLOY
PLATING :
UNDER PLATING : NICKEL-OVERALL
WIPING AREA : 10μ" [ 0.25μm ] GOLD
SOLDER TAILS : GOLD FLASH
RETENTION CLIPS : TIN-COPPER
MARKINGS COMPATIBILITY : TS-1143, TS-1141, TS-2047

```

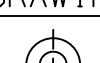
CURRENT RATING: 0.5 A
INSULATION RESISTANCE: $>1 \times 10^9 \Omega$ AT 500 V_{DC}
WITHSTANDING VOLTAGE: 650V_{AC} FOR 1 MINUTE


TEMPERATURE RATING: -55°C TO +85°C
PROCESS RATING: 260°C WAVE SOLDER COMPATIBLE

P50E - XXXP1 - XXX EA

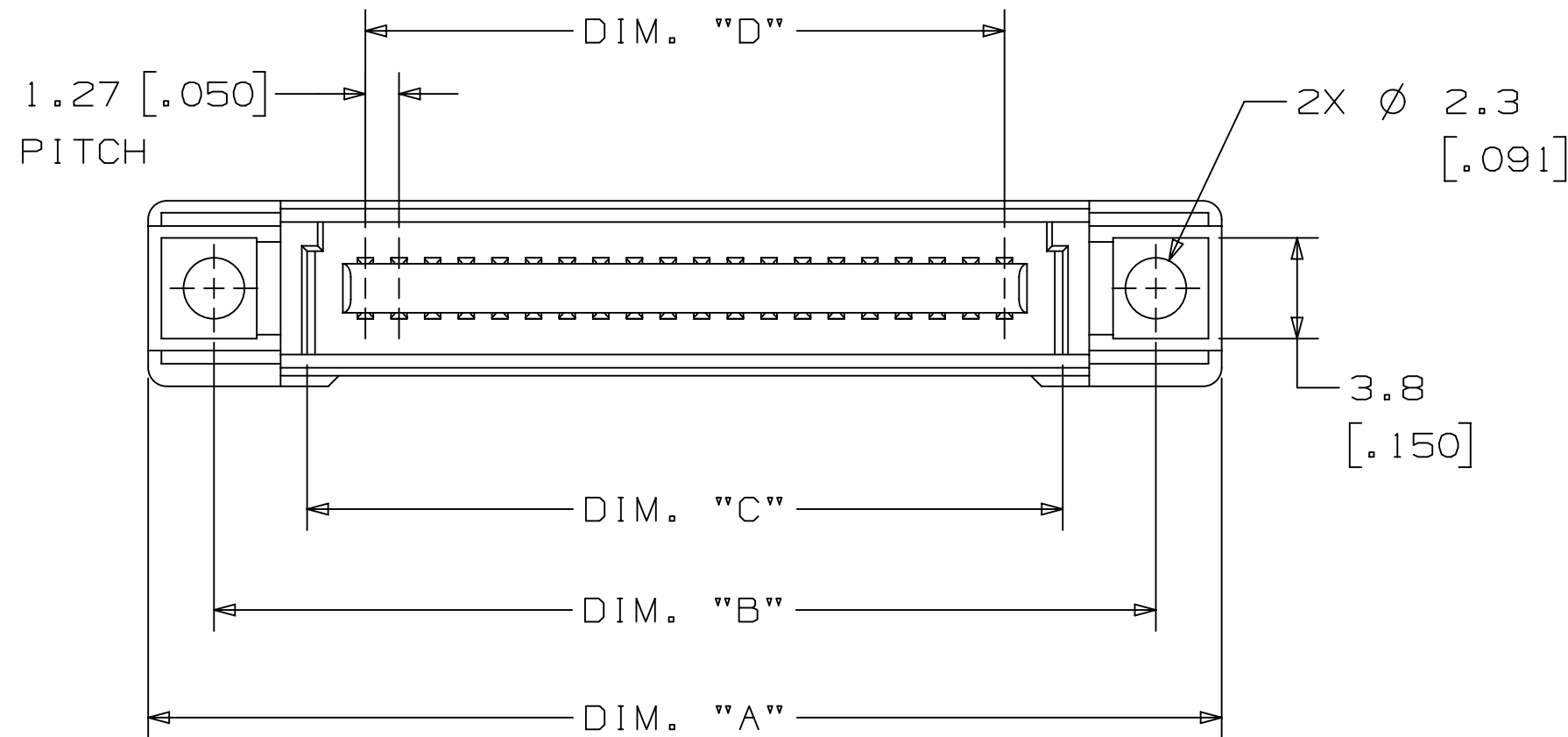
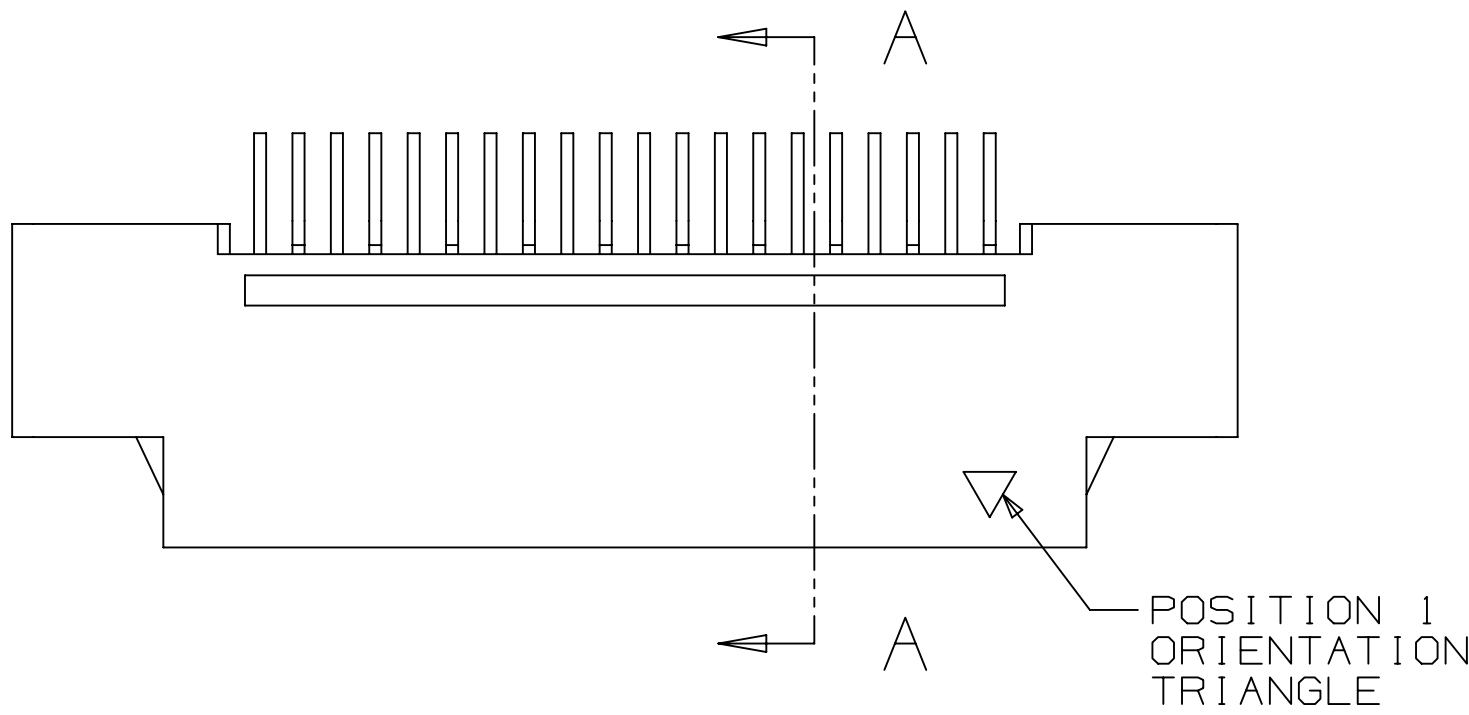
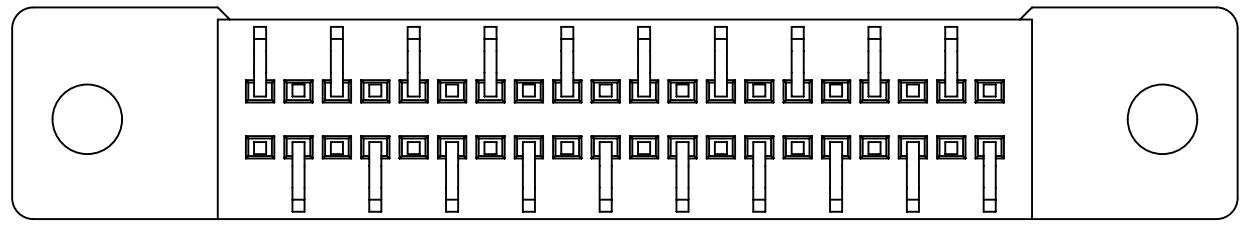
SOLDER TAIL/CLIP OPTIONS:
 S1=STRAIGHT TAILS, WITHOUT RETENTION CLIPS
 SR1=RIGHT ANGLE TAILS, WITHOUT RETENTION CLIPS
 RR1=RIGHT ANGLE TAILS, WITH RETENTION CLIPS

3M IS A TRADEMARK OF 3M COMPANY.
FOR TECHNICAL, SALES OR ORDERING
INFORMATION CALL 800-225-5373

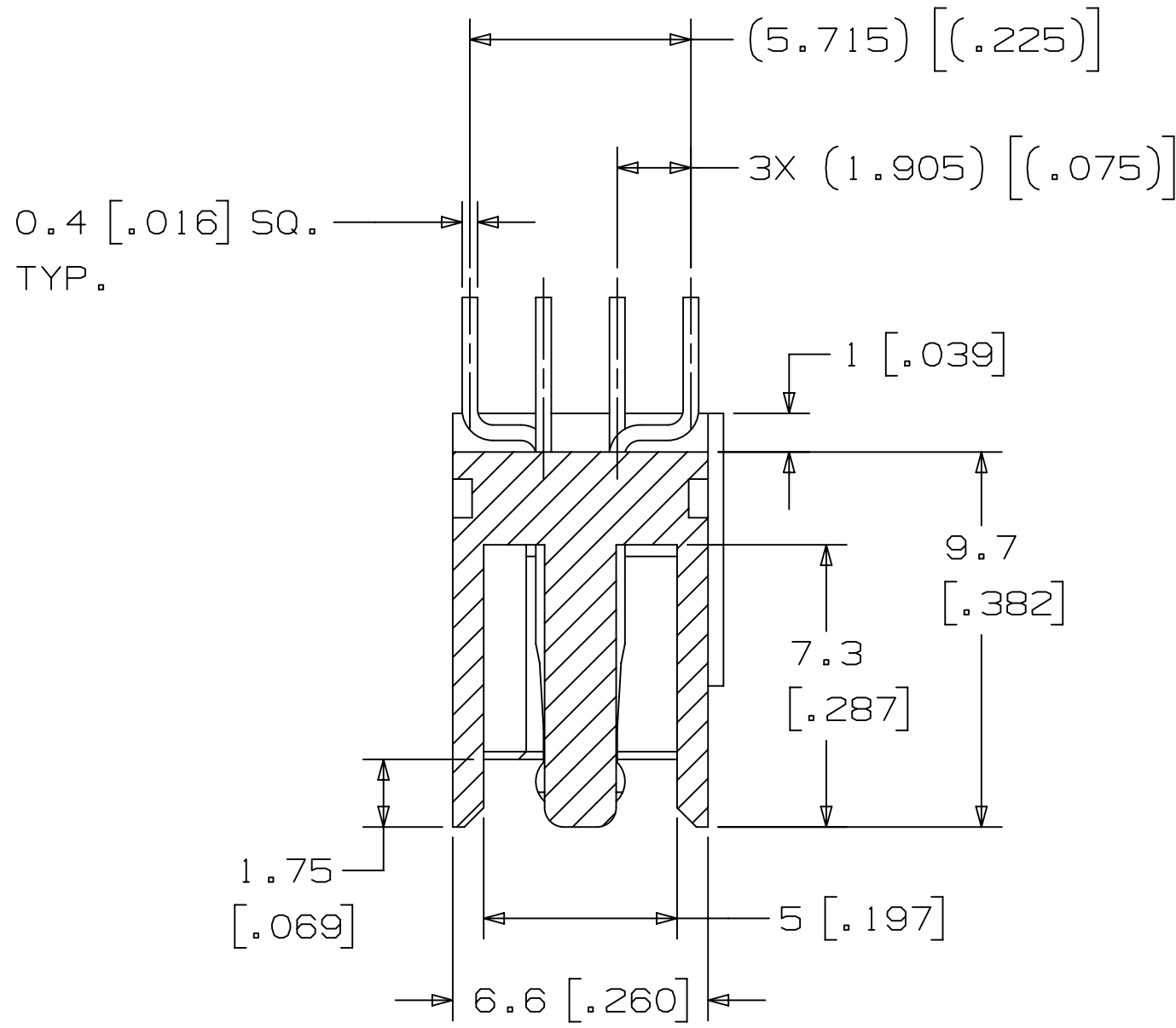
DESIGN REFERENCE		NEXT ASSEMBLY									
ACCESS CODES											
DIVISION		DIVISION CODE									
DO NOT SCALE		DEPP									
SCALE		TOLERANCES EXCEPT AS NOTED									
DRAWING		INCHES									
		<table border="1"> <tr><td>.0</td><td>±</td></tr> <tr><td>.00</td><td>±</td></tr> <tr><td>.004</td><td>±</td></tr> <tr><td>.0000</td><td>±</td></tr> </table>		.0	±	.00	±	.004	±	.0000	±
.0	±										
.00	±										
.004	±										
.0000	±										
THIRD ANGLE PROJECTION		MILLIMETERS									
INTERPRET PER ASME Y14.5 - 2018		<table border="1"> <tr><td>0</td><td>±</td></tr> <tr><td>.0</td><td>± .25</td></tr> <tr><td>.00</td><td>± 0.13</td></tr> <tr><td>.0000</td><td>± .005</td></tr> </table>		0	±	.0	± .25	.00	± 0.13	.0000	± .005
0	±										
.0	± .25										
.00	± 0.13										
.0000	± .005										
MAX SURFACE ROUGHNESS		ANGLES ±									
<input checked="" type="checkbox"/> ALL SURFACES <input type="checkbox"/> MARKED ONLY											

C	122452	JUN 03,2025		JNC	FJR
		REVISE VIEWS AND REDRAWN			
B	31869	JAN 31,2011		SBO	SAN
		REVISE TABLE 1			
REV	ECO	ISSUE DATE AND DESCRIPTION		DRFT	CHKD
CASTIGLIONE		JUN 03,2025			
CHKD		DATE	APPR. _____ R. RODRIGUEZ	DATE	JUN 03,2025
		<p align="center">© 3M COPYRIGHT 2025</p> <p>This document and the information it contains are 3M property and may not be reproduced or further distributed without the 3M permission, or used or disclosed otherwise for non 3M authorized purposes. All rights reserved.</p>			
		<p align="center">3M CENTER ST. PAUL, MN 55144</p>			
TITLE					
<p align="center">PAK50 BOARDMOUNT PLUG, .050" STR & RA, THROUGH HOLE</p>					
CASE NUMBER	D	DRAWINGS NO.			REV.
		28-5100-1144-4			C
MODEL	P50E	DET.	TESTS	YES <input type="checkbox"/> NO <input checked="" type="checkbox"/>	SHT 1 OF 4

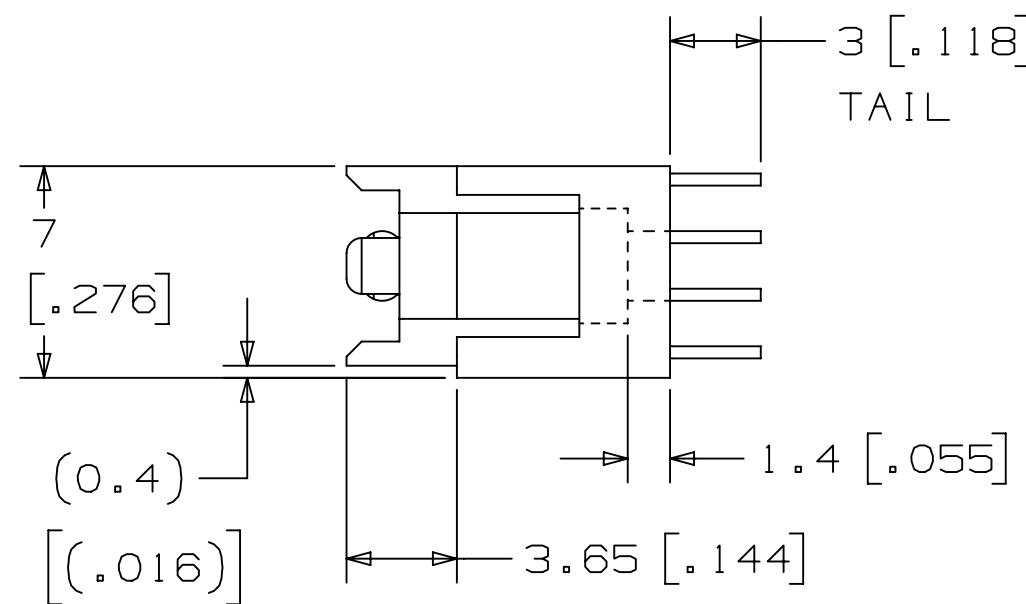
3M™ PAK 50 BOARDMOUNT PLUG, P50E SERIES
.050" STRAIGHT AND RIGHT ANGLE, THROUGH-HOLE



STRAIGHT PLUG SHOWN

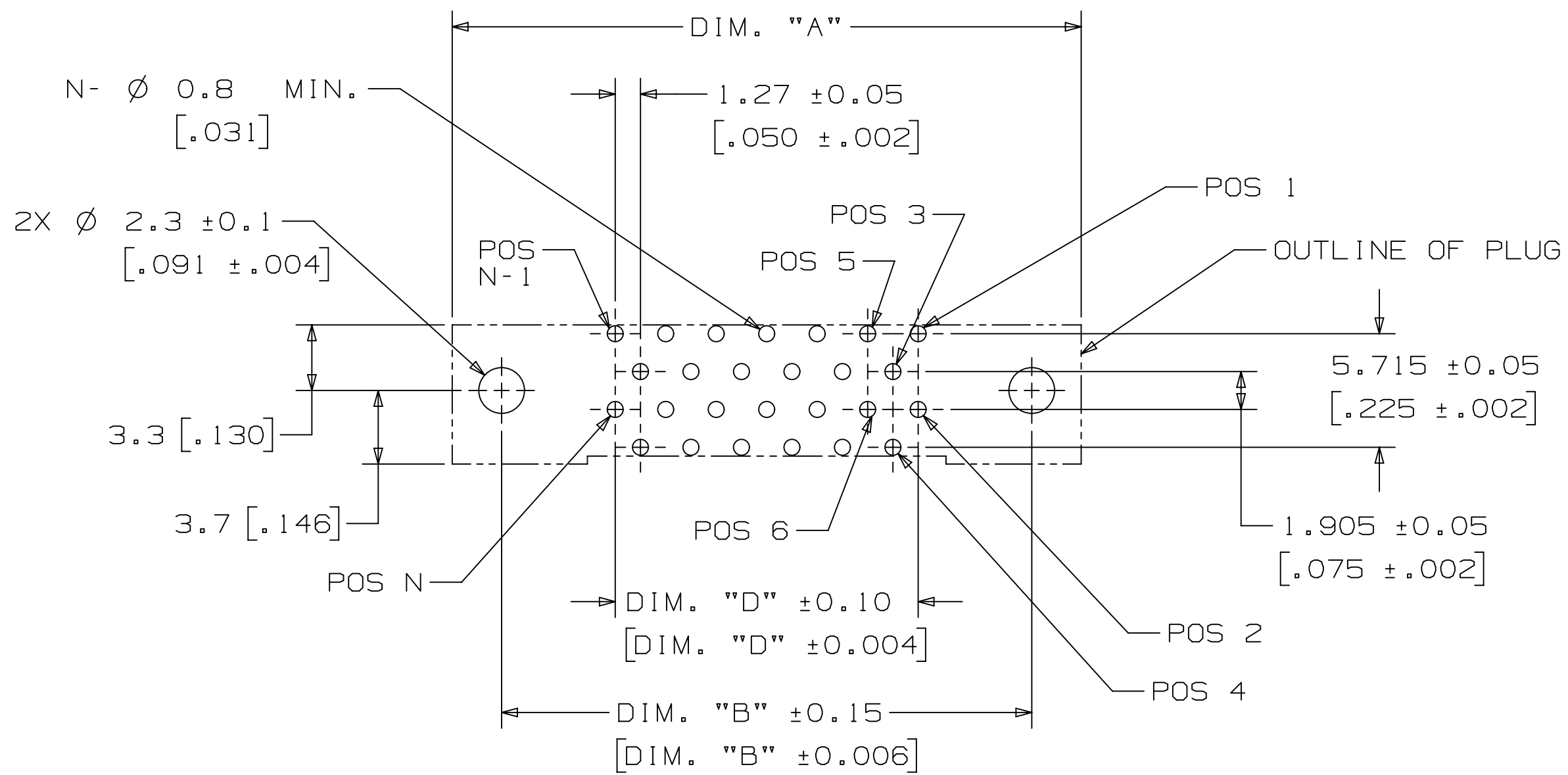


SECTION A - A
SCALE 6x

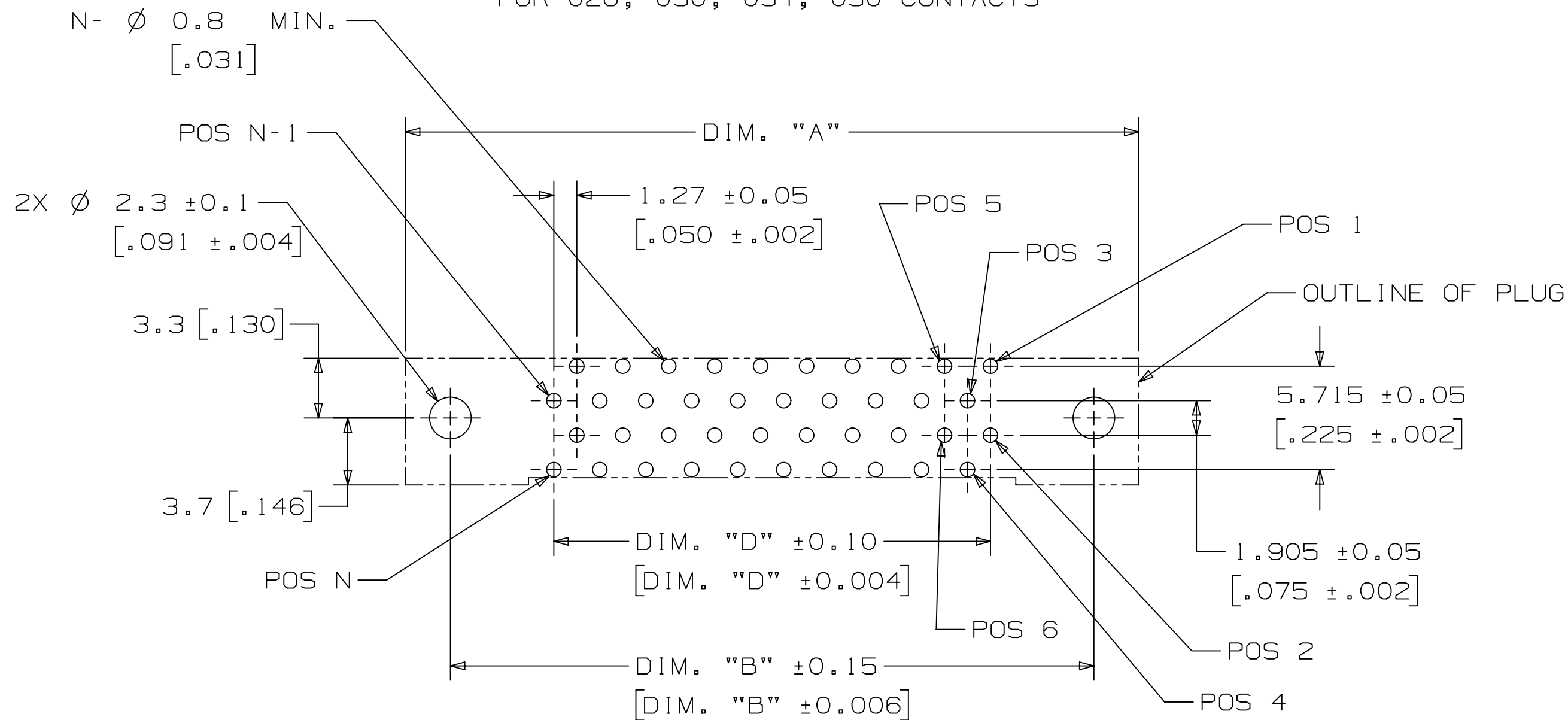


PRODUCT TABLE / DIMENSIONS
(FOR STRAIGHT AND RIGHT ANGLE PLUG)

TABLE 1				
CONTACT QTY.	DIM. "A"	DIM. "B"	DIM. "C"	DIM. "D"
020	27.83 [1.096]	22.86 [.900]	15.83 [.623]	11.43 [.450]
026	31.64 [1.246]	26.67 [1.050]	19.64 [.773]	15.24 [.600]
030	34.18 [1.346]	29.21 [1.150]	22.18 [.873]	17.78 [.700]
032	35.45 [1.396]	30.48 [1.200]	23.45 [.923]	19.05 [.750]
034	36.72 [1.446]	31.75 [1.250]	24.72 [.973]	20.32 [.800]
036	37.99 [1.496]	33.02 [1.300]	25.99 [1.023]	21.59 [.850]
040	40.53 [1.596]	35.56 [1.400]	28.53 [1.123]	24.13 [.950]
050	46.88 [1.846]	41.91 [1.650]	34.88 [1.373]	30.48 [1.200]
052	48.15 [1.896]	43.18 [1.700]	36.15 [1.432]	31.75 [1.250]
060	53.23 [2.096]	48.26 [1.900]	41.23 [1.623]	36.83 [1.450]
068	58.31 [2.296]	53.34 [2.100]	46.31 [1.823]	41.91 [1.650]
080	65.93 [2.596]	60.96 [2.400]	53.93 [2.123]	49.53 [1.950]
100	78.63 [3.096]	73.66 [2.900]	66.63 [2.623]	62.23 [2.450]



FOR 026, 030, 034, 050 CONTACTS



FOR 020, 032, 036, 040, 052, 060, 068, 080, 100 CONTACTS

PRINTED CIRCUIT BOARD LAYOUT
(COMPONENT SIDE VIEW)

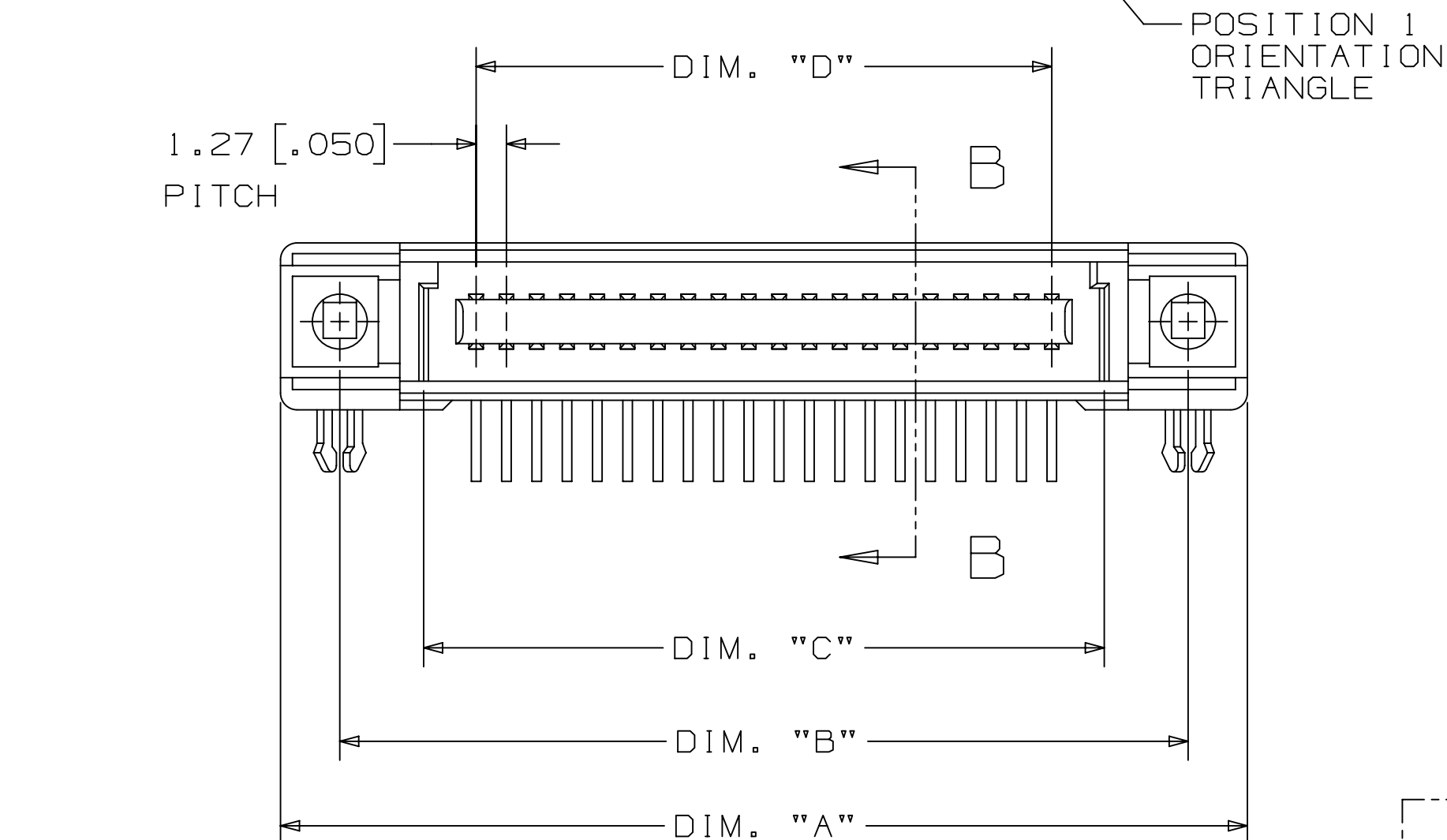
RECOMMENDED PC BOARD THICKNESS: 1.6±0.19
[.063±.007]

3M™ Display and Electronics Product Platform, (DEPP)
Transportation and Electronics Business Group (TEBG)
<http://www.3M.com/interconnect>

3M IS A TRADEMARK OF 3M COMPANY.
FOR TECHNICAL, SALES OR ORDERING
INFORMATION CALL 800-225-5373

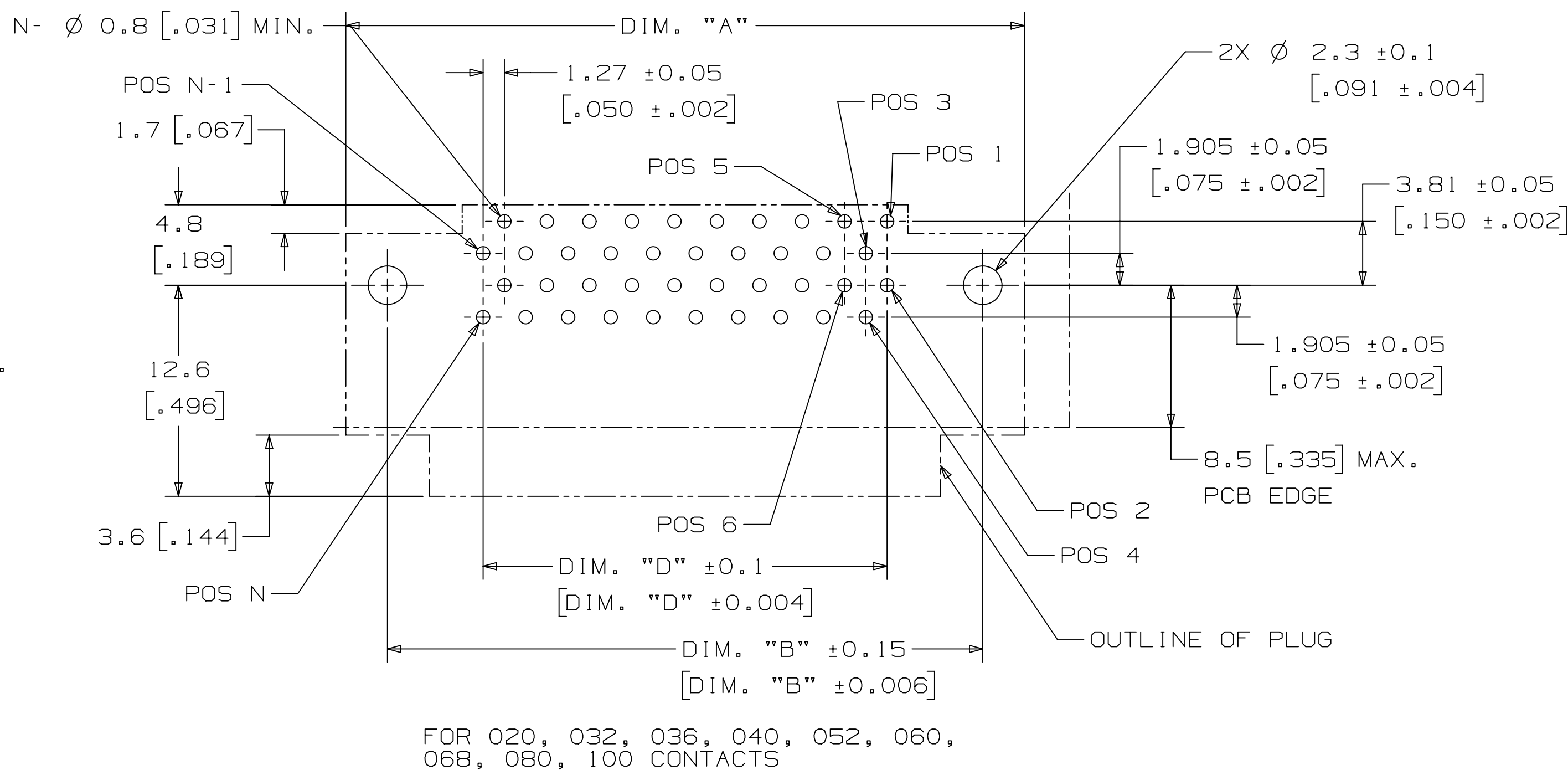
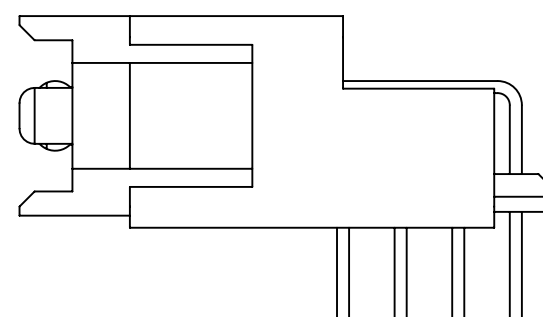
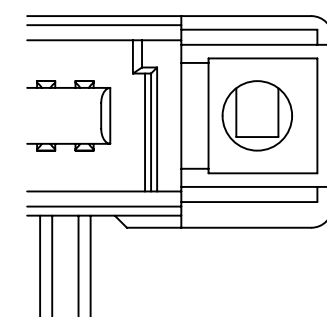
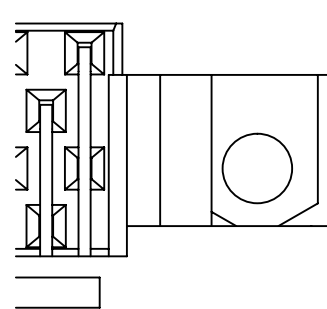
DESIGN REFERENCE		NEXT ASSEMBLY		C	122452	JUN 03,2025		JNC	FJR
XREF CODES		DIVISION		REV	ECO	ISSUE DATE AND DESCRIPTION		DRFT	CHKD
DIVISION		SCALE		DRFT	CASTIGLIONE	DATE JUN 03,2025		DATE	
DO NOT SCALE DRAWING		TOLERANCES EXCEPT AS NOTED		CHKD		DATE		DATE	
THIRD ANGLE PROJECTION		MILLIMETERS		APPRV. F. RODRIGUEZ		DATE JUN 03,2025			
INTERPRET PER ASME Y14.5 - 2018		INCHES		3M		© 3M COPYRIGHT 2025			
MAX. SURFACE ROUGHNESS		TITLES		3M Center St. Paul, MN 55144		This document and the information it contains are 3M property and may not be reproduced or further distributed without 3M permission, or used or disclosed other than for 3M authorized purposes. All rights reserved.			
MARKED ONLY		PAK50 BOARDMOUNT PLUG, .050" STR & RA, THROUGH HOLE		CAGE NUMBER		SIZE		DRAWING NO.	
				MODEL		P50E		REV.	
								DET	
								LISTS	
								YES	
								NO	
								SHT 2 OF 4	

.050" STRAIGHT AND RIGHT ANGLE, THROUGH-HOLE



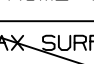


Technical drawing of a mechanical part with dimensions in inches and millimeters. The drawing shows a cross-section of a component with a central hole and a flange. Dimensions are provided in inches [millimeters].

- Overall height: 7 [276]
- Flange thickness: (0.4) [(016)]
- Central hole diameter: 3.65 [144]
- Flange outer diameter: 3 [118]
- Flange inner diameter: 0.40 [016] SO. TYP.
- Flange feature: TAIL



RECOMMENDED PC BOARD THICKNESS: 1.6 ± 0.19
[$.063 \pm .007$]

DESIGN REFERENCE		NEXT ASSEMBLY		REV	ECO	ISSUE DATE AND DESCRIPTION		DRFT	CHKD
ACROSS CODES				DRFT	CASTIGLIONE	DATE JUN 03, 2025		MPG	DATE
				CHKD		DATE		APPLV. F. RODRIGUEZ	DATE JUN 03, 2025
DIVISION		DIVISION CODE		© 3M COPYRIGHT 2025					
		DEPP		 3M Center St. Paul, MN 55144		This document and the information it contains are 3M property and may not be reproduced or further distributed without 3M permission, or used or disclosed other than for 3M authorized purposes. All rights reserved.			
DO NOT SCALE DRAWING		TOLERANCES EXCEPT AS NOTED		TITLE PAK50 BOARDMOUNT PLUG, .050" STR & RA, THROUGH HOLE					
		INCHES							
THIRD ANGLE PROJECTION		.0 ± .00 ± .000 ± .0000 ±							
INTERPRET PER ASME Y14.5 - 2018		MILLIMETERS		CASE NUMBER D SIZE DRAWING NO. 578-5100-1144-4 REV. C					
MAX SURFACE ROUGHNESS  ALL SURFACES <input checked="" type="checkbox"/> MARKED ONLY		0 ± .0 ±.25 .00 ±0.13 .000 ±.005		MODEL P50E		DET. <input type="checkbox"/> LISTS <input type="checkbox"/> YES <input checked="" type="checkbox"/> NO		SHT 3 OF 4	
		ANGLES ±							

3M IS A TRADEMARK OF 3M COMPANY.
FOR TECHNICAL, SALES OR ORDERING
INFORMATION CALL 800-225-5373

87654321

3M™ PAK 50 BOARDMOUNT PLUG, P50E SERIES
.050" STRAIGHT AND RIGHT ANGLE, THROUGH-HOLE

Regulatory: For regulatory information about this product, visit 3M.com/regs or contact your 3M representative.

Technical Information: The technical information, guidance, and other statements contained in this document or otherwise provided by 3M are based upon records, tests, or experience that 3M believes to be reliable, but the accuracy, completeness, and representative nature of such information is not guaranteed. Such information is intended for people with knowledge and technical skills sufficient to assess and apply their own informed judgment to the information. No license under any 3M or third party intellectual property rights is granted or implied with this information.

Product Use: Many factors beyond 3M's control and uniquely within user's knowledge and control can affect the use and performance of a 3M product in a particular application. As a result, customer is solely responsible for evaluating the product and determining whether it is appropriate and suitable for customer's application, including conducting a workplace hazard assessment and reviewing all applicable regulations and standards (e.g., OSHA, ANSI, etc.). Failure to properly evaluate, select, and use a 3M product in accordance with all applicable instructions and with appropriate safety equipment, or to meet all applicable safety regulations, may result in injury, sickness, death, and/or harm to property.

Warranty, Limited Remedy, and Disclaimer: Unless a different warranty is specifically stated on the applicable 3M product packaging or product literature (in which case such warranty governs), 3M warrants that each 3M product meets the applicable 3M product specification at the time 3M ships the product. 3M MAKES NO OTHER WARRANTIES OR CONDITIONS, EXPRESS OR IMPLIED, INCLUDING, BUT NOT LIMITED TO, ANY IMPLIED WARRANTY OR CONDITION OF MERCHANTABILITY, FITNESS FOR A PARTICULAR PURPOSE, OR ANY IMPLIED WARRANTY OR CONDITION ARISING OUT OF A COURSE OF DEALING, CUSTOM, OR USAGE OF TRADE. If a 3M product does not conform to this warranty, then the sole and exclusive remedy is, at 3M's option, replacement or repair of the 3M product or refund of the purchase price.

Limitation of Liability: Except for the limited remedy stated above, and except to the extent prohibited by applicable law, 3M will not be liable for any loss or damage arising from or related to the 3M product, whether direct, indirect, special, incidental, or consequential (including, but not limited to, lost profits or business opportunity), regardless of the legal or equitable theory asserted, including, but not limited to, warranty, contract, negligence, or strict liability.

Disclaimer: For industrial use only. Not intended, labeled or packaged for consumer sale or use.

3M Company
Electronics Materials Solutions Division
13011 McCallen Pass, Bldg. C
Austin, TX 78753-5380
1-800-225-5373
www.3M.com/interconnect

3M™ Display and Electronics Product Platform, (DEPP)
Transportation and Electronics Business Group (TEBG)
http://www.3M.com/interconnect

3M IS A TRADEMARK OF 3M COMPANY.
FOR TECHNICAL, SALES OR ORDERING
INFORMATION CALL 800-225-5373

87654321

DESIGN REFERENCE		NEXT ASSEMBLY		REV	ECO	ISSUE DATE AND DESCRIPTION		DRFT	CHKD
XREF CODES				DRFT	CASTIGLIONE		DATE JUN 03,2025	MFG	DATE
				CHKD			DATE	APPRV F. RODRIGUEZ	DATE JUN 03,2025
DIVISION		DIVISION CODE DEPP		© 3M COPYRIGHT 2025					
DO NOT SCALE DRAWING		SCALE		TOLERANCES EXCEPT AS NOTED		3M 3M Center St. Paul, MN 55144 This document and the information it contains are 3M property and may not be reproduced or further distributed without 3M permission, or used or disclosed other than for 3M authorized purposes. All rights reserved.			
THIRD ANGLE PROJECTION		INCHES		TITLE					
INTERPRET PER ASME Y14.5 - 2018		MILLIMETERS		PAK50 BOARDMOUNT PLUG, .050" STR & RA, THROUGH HOLE					
MAX SURFACE ROUGHNESS		ANGLES		CAGE NUMBER		SIZE	DRAWING NO.		REV.
ALL SURFACES				D			78-5100-1144-4		C
MARKED ONLY				MODEL		P50E		DET LISTS YES NO SHT 4 OF 4	