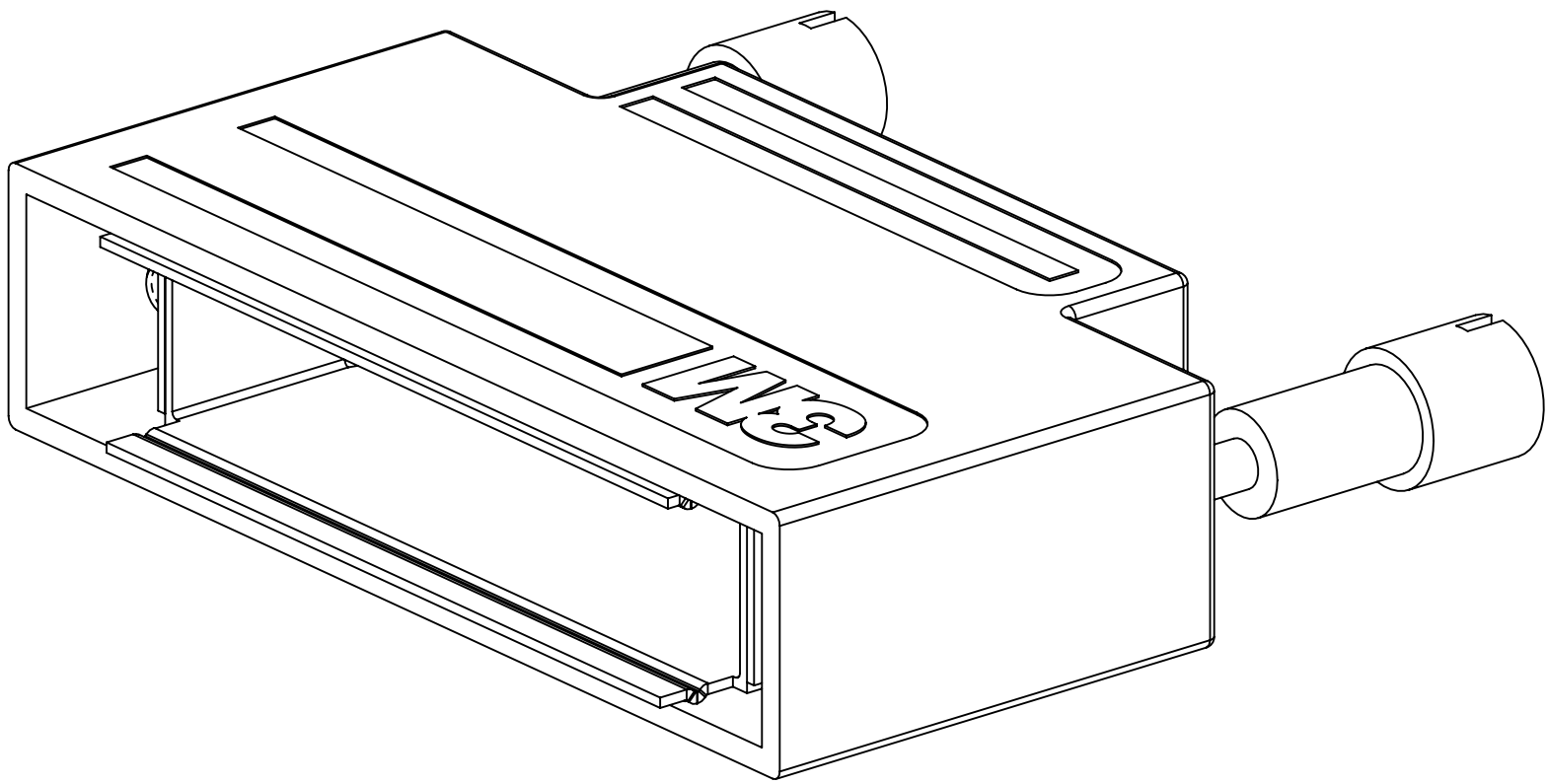


3M™ MINI D RIBBON (MDR) CONNECTORS, 103 SERIES
.050" PLASTIC SHIELDED JUNCTION SHELL FOR ROUND CABLE

- * ROUND CABLE STRAIGHT EXIT.
- * RELIABLE THUMBSCREW DESIGN.
- * PLASTIC SHROUD OVER METAL EMI SHIELD.
- * EXCELLENT EMI/ESD PROTECTION.
- * COLORS AVAILABLES, SEE ORDERING INFORMATION.
- * AVAILABLE IN 26, 50 AND 68 POSITIONS.



1. PART NUMBER INCLUDES A CABLE CLAMP AND TWO M2.6 SCREWS. THESE PARTS ARE NOT SHOWN.
2. USE THE JACKSOCKET 3341-31 WITH THE 26 POSITION AND THE 3341-30 WITH THE 50 AND 68 POSITION FOR MOUNTING TO THE PANEL.
3. TABS ADJACENT TO DIM. "A" (SHOWN ON SHEET 2) MUST BE BROKEN OFF OR FLATTENED DURING SHELL ASSEMBLY (SEE INSTRUCTIONS).
4. REGULATORY INFORMATION: VISIT 3M.com/regs



PHYSICAL :

OUTER SHELL :

MATERIAL : COPOLYESTER ELASTOMER

FLAMMABILITY : UL94V-0

COLOR : SEE ORDERING INFORMATION

INNER SHELL :

MATERIAL : STEEL .02 (0.5) THICK

PLATING : NICKEL

MARKINGS :

SOLDER TAILS : 3M LOGO

ORDERING INFORMATION
103XX-32J0-00X

CONTACT QUANTITY : (SEE TABLE 1)

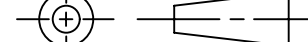
SHELL COLORS:

0 = BEIGE

3 = GRAY

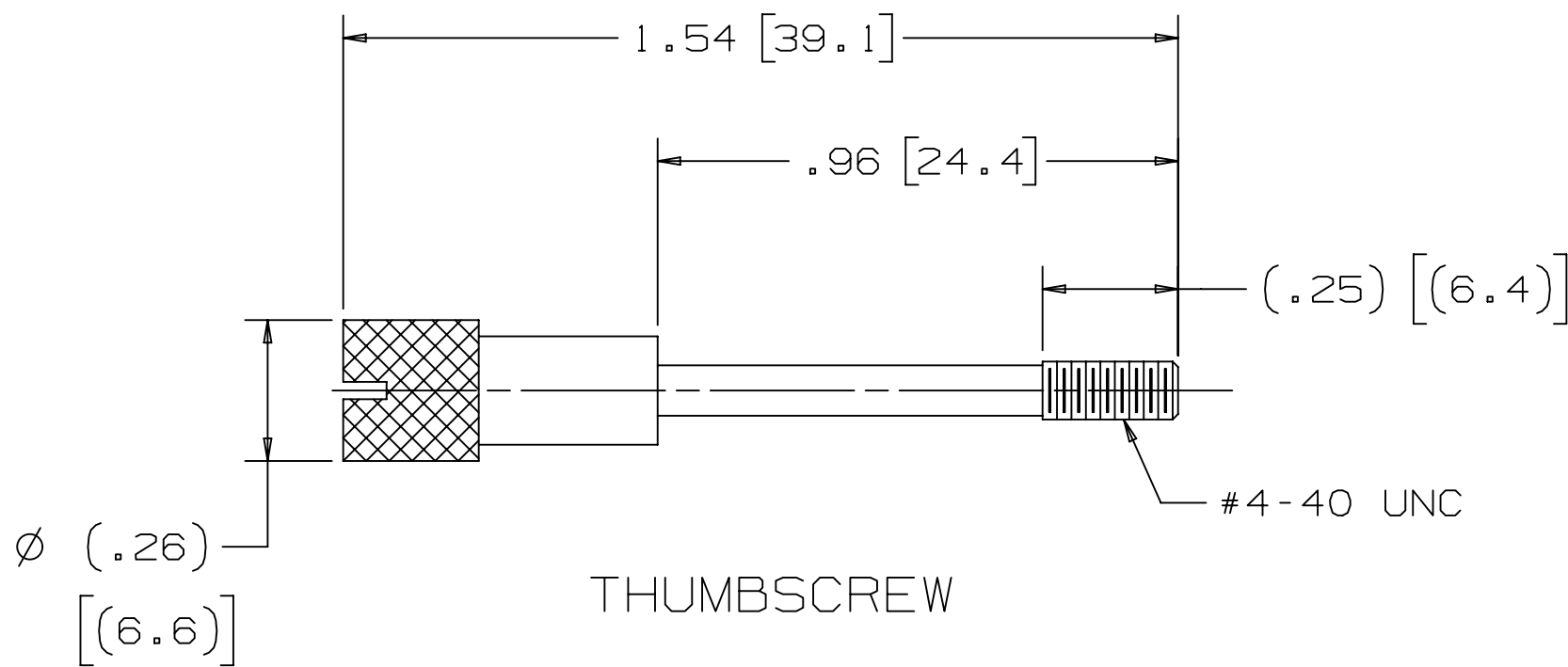
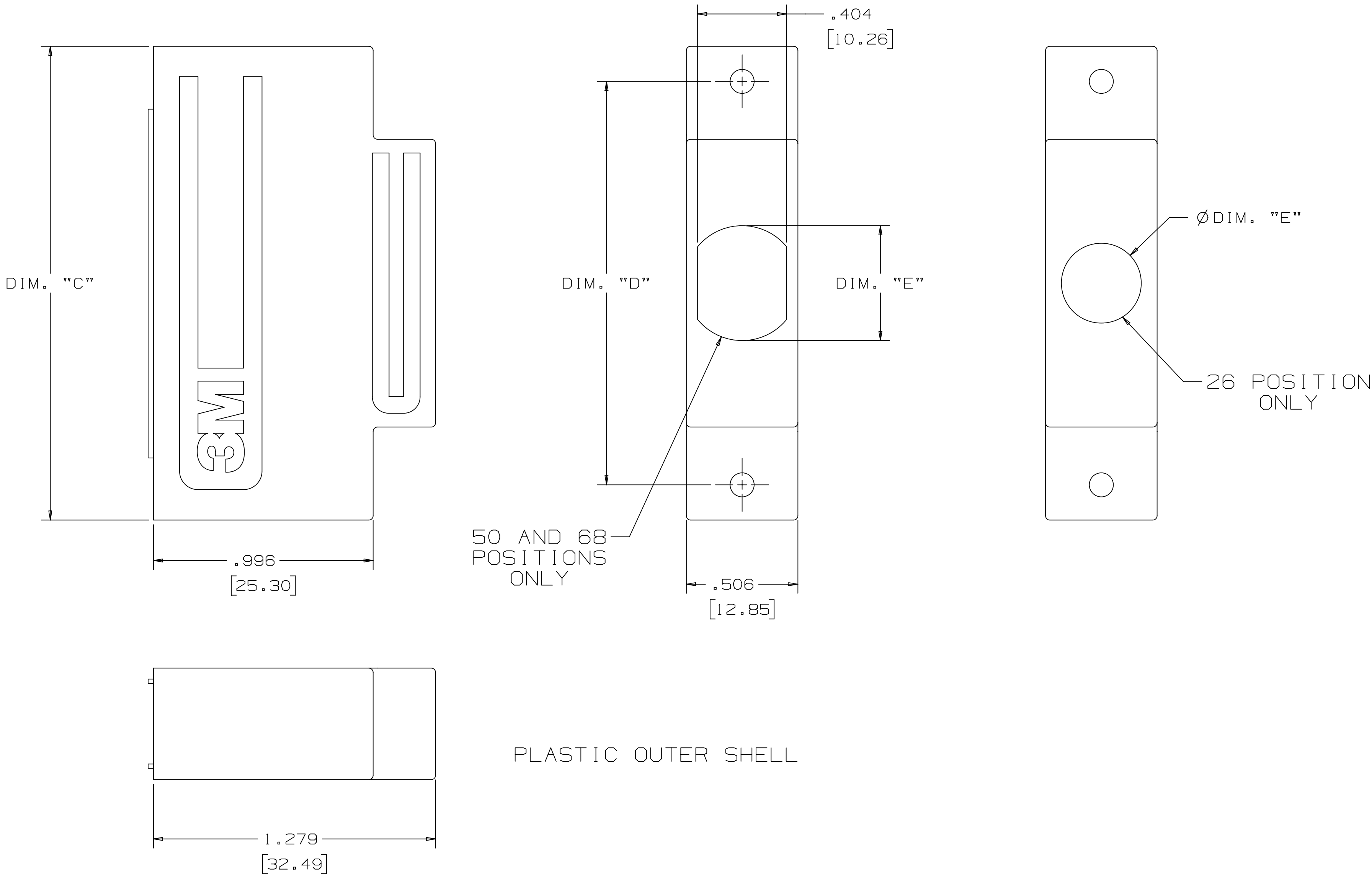
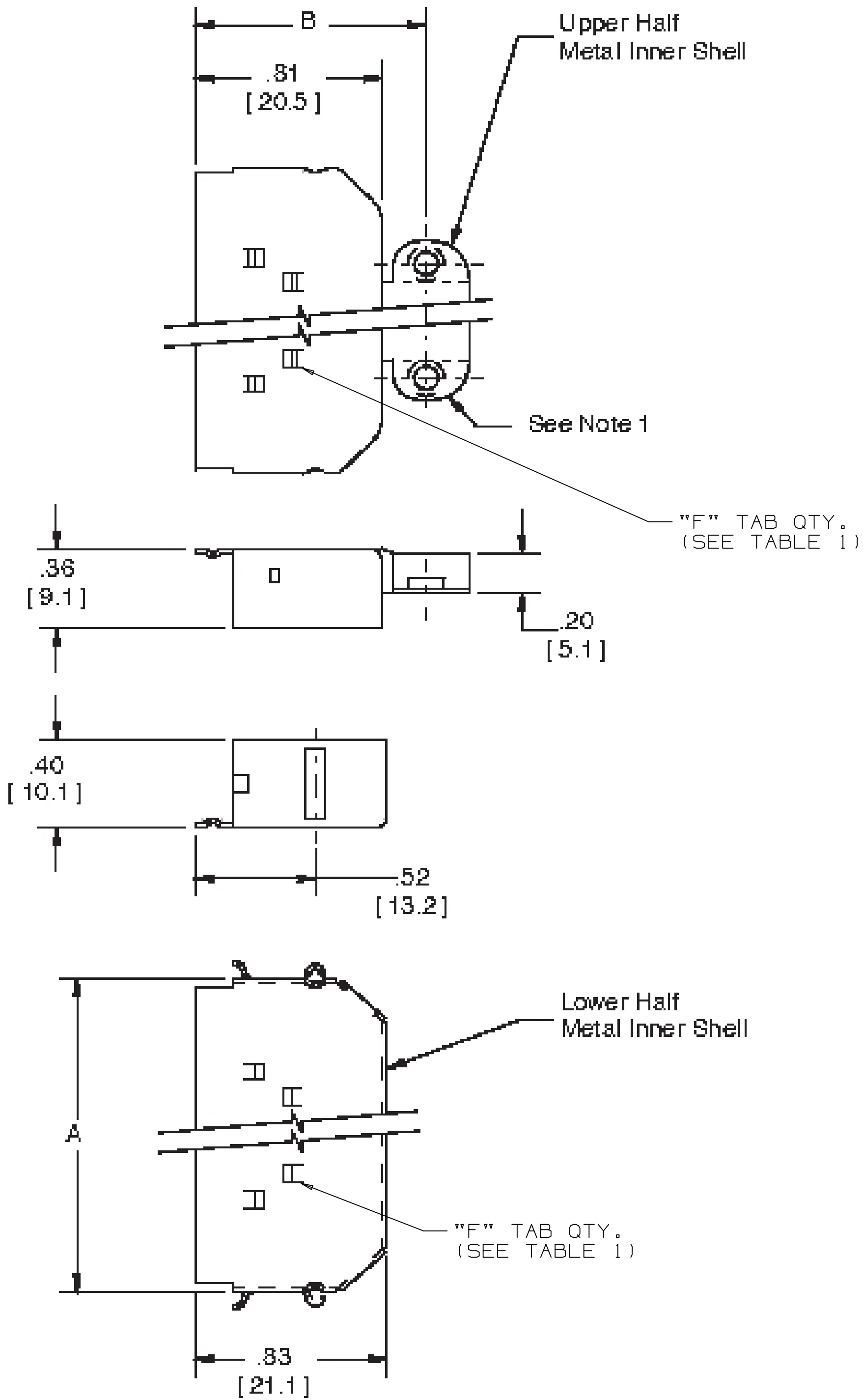
6 = BLACK

DIMENSIONS: INCHES (MM)
[MM] IS FOR REF. ONLY

DESIGN REFERENCE		NEXT ASSEMBLY		REV	ECO	ISSUE DATE AND DESCRIPTION		DRFT	CHKD
ACCESS CODES				DRFT	CASTIGLIONE	DATE	SEP 19, 2024	MFG	DATE
				CHKD		DATE		APPRV	DATE
								F. RODRIGUEZ	SEP 20, 2024
DIVISION		DIVISION CODE							
		EMSD							
DO NOT SCALE DRAWING		SCALE		TOLERANCES EXCEPT AS NOTED		© 3M COPYRIGHT 2024 This document and the information it contains are 3M property and may not be reproduced or further distributed without the written 3M permission, or used or disclosed other than for 3M authorized purposes. All rights reserved.			
				INCHES		3M Center St. Paul, MN 55144			
				.00 ± .1		TITLE MDR CONN, .050" PLASTIC SHIELDED JCT SHELL, RD CABLE			
THIRD ANGLE PROJECTION				.00 ± .01					
				.00 ± .005					
				.0000 ± .0002					
				MILLIMETERS					
INTERPRET PER ASME Y14.5 - 2018				.00 ±					
MAX SURFACE ROUGHNESS				.00 ±					
<input checked="" type="checkbox"/> ALL SURFACES				.00 ±					
<input type="checkbox"/> MARKED ONLY				.000 ±					
				ANGLES ±					

3M™ MINI D RIBBON (MDR) CONNECTORS, 103 SERIES
.050" PLASTIC SHIELDED JUNCTION SHELL FOR ROUND CABLE

TABLE 1							
CONTACT QTY.	DIM. "A"	DIM. "B"	DIM. "C"	DIM. "D"	DIM. "E"	DIM. "E" SHAPE	"F" TAB QTY.
26	1.06 [27.0]	1.15 [29.3]	1.55 [39.7]	1.23 [31.27]	.36 [9.2]	ROUND HOLE	3
50	1.66 [42.2]	.98 [24.8]	2.15 [54.6]	1.83 [46.5]	.52 [13.2]	SLOT	4
68	2.11 [53.6]	.98 [24.8]	2.60 [66.0]	2.28 [57.9]	.52 [13.2]	SLOT	4



3M ELECTRONICS MATERIALS SOLUTIONS DIVISION
INTERCONNECT SOLUTIONS
<http://www.3M.com/interconnect>

3M IS A TRADEMARK OF 3M COMPANY.
FOR TECHNICAL, SALES OR ORDERING
INFORMATION CALL 800-225-5373

DESIGN REFERENCE		NEXT ASSEMBLY		REV		ISSUE DATE AND DESCRIPTION		DRFT		CHKD	
XREF CODES		DIVISION CODE		ECO		SEP 19, 2024		MFG		DATE	
DIVISION		EMSD		CASTIGLIONE		SEP 19, 2024		F. RODRIGUEZ		SEP 20, 2024	
DO NOT SCALE DRAWING		TOLERANCES EXCEPT AS NOTED		3M		3M Center St. Paul, MN 55144		© 3M COPYRIGHT 2024		This document and the information it contains are 3M property and may not be reproduced or further distributed without 3M permission, or used or disclosed other than for 3M authorized purposes. All rights reserved.	
THIRD ANGLE PROJECTION		INTERPRET PER ASME Y14.5 - 2018		TITLE		MDR CONN, .050" PLASTIC SHIELDED JCT SHELL, RD CABLE		CAGE NUMBER		DRAWING NO.	
MAX. SURFACE ROUGHNESS		ALL SURFACES		MODEL		103		DET		YES	
MARKED ONLY		ANGLES		C		78-5100-0535-4		SHT 2 OF 3		REV.	

3M™ MINI D RIBBON (MDR) CONNECTORS, 103 SERIES
 .050" PLASTIC SHIELDED JUNCTION SHELL FOR ROUND CABLE

Regulatory: For regulatory information about this product, visit 3M.com/regs or contact your 3M representative.

Technical Information: The technical information, guidance, and other statements contained in this document or otherwise provided by 3M are based upon records, tests, or experience that 3M believes to be reliable, but the accuracy, completeness, and representative nature of such information is not guaranteed. Such information is intended for people with knowledge and technical skills sufficient to assess and apply their own informed judgment to the information. No license under any 3M or third party intellectual property rights is granted or implied with this information.

Product Use: Many factors beyond 3M's control and uniquely within user's knowledge and control can affect the use and performance of a 3M product in a particular application. As a result, customer is solely responsible for evaluating the product and determining whether it is appropriate and suitable for customer's application, including conducting a workplace hazard assessment and reviewing all applicable regulations and standards (e.g., OSHA, ANSI, etc.). Failure to properly evaluate, select, and use a 3M product in accordance with all applicable instructions and with appropriate safety equipment, or to meet all applicable safety regulations, may result in injury, sickness, death, and/or harm to property.

Warranty, Limited Remedy, and Disclaimer: Unless a different warranty is specifically stated on the applicable 3M product packaging or product literature (in which case such warranty governs), 3M warrants that each 3M product meets the applicable 3M product specification at the time 3M ships the product. 3M MAKES NO OTHER WARRANTIES OR CONDITIONS, EXPRESS OR IMPLIED, INCLUDING, BUT NOT LIMITED TO, ANY IMPLIED WARRANTY OR CONDITION OF MERCHANTABILITY, FITNESS FOR A PARTICULAR PURPOSE, OR ANY IMPLIED WARRANTY OR CONDITION ARISING OUT OF A COURSE OF DEALING, CUSTOM, OR USAGE OF TRADE. If a 3M product does not conform to this warranty, then the sole and exclusive remedy is, at 3M's option, replacement or repair of the 3M product or refund of the purchase price.

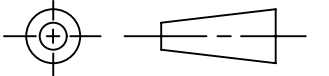
Limitation of Liability: Except for the limited remedy stated above, and except to the extent prohibited by applicable law, 3M will not be liable for any loss or damage arising from or related to the 3M product, whether direct, indirect, special, incidental, or consequential (including, but not limited to, lost profits or business opportunity), regardless of the legal or equitable theory asserted, including, but not limited to, warranty, contract, negligence, or strict liability.

Disclaimer: For industrial use only. Not intended, labeled or packaged for consumer sale or use.

3M Company
Electronics Materials Solutions Division
13011 McCallen Pass, Bldg. C
Austin, TX 78753-5380
1-800-225-5373
www.3M.com/interconnect

3M ELECTRONICS MATERIALS SOLUTIONS DIVISION
INTERCONNECT SOLUTIONS
<http://www.3M.com/interconnect>

3M IS A TRADEMARK OF 3M COMPANY.
FOR TECHNICAL, SALES OR ORDERING
INFORMATION CALL 800-225-5373

		C		C 73708		SEP 20, 2024		JNC		FJR	
		B		16981		REVISED AND REDRAWN		AUG 18, 2008		BAC	
		A		----		REMOVE THUMBSCREW OPTIONS		AUG 18, 2007		BF	
						RELEASED				BF	
DESIGN REFERENCE				NEXT ASSEMBLY				REV			
ACCESS CODES								ISSUE DATE AND DESCRIPTION			
								DATE			
				DES. CASTIGLIONE				MFG			
				CHKD				DATE			
								APPR. F. RODRIGUEZ			
								DATE SEP 20, 2024			
DIVISION				DIVISION CODE				© 3M COPYRIGHT 2024			
DO NOT SCALE DRAWING				SCALE				TOLERANCES EXCEPT AS NOTED			
								3M Center St. Paul, MN 55144			
THIRD ANGLE PROJECTION								This document and the information it contains are 3M property and may not be reproduced or further distributed without written permission, or used or disclosed otherwise than for 3M authorized purposes. All rights reserved.			
INTERPRET PER ASME Y14.5 - 2018								TITLE			
MAX. SURFACE ROUGHNESS								MDR CONN, .050" PLASTIC SHIELDED JCT SHELL, RD CABLE			
ALL SURFACES								CAGE NUMBER			
MARKED ONLY								DRAWING NO.			
✓								D 78-5100-0535-4			
								MODEL			
								103			
								DEF. LISTS			
								YES			
								NO			
								SHT 3 OF 3			