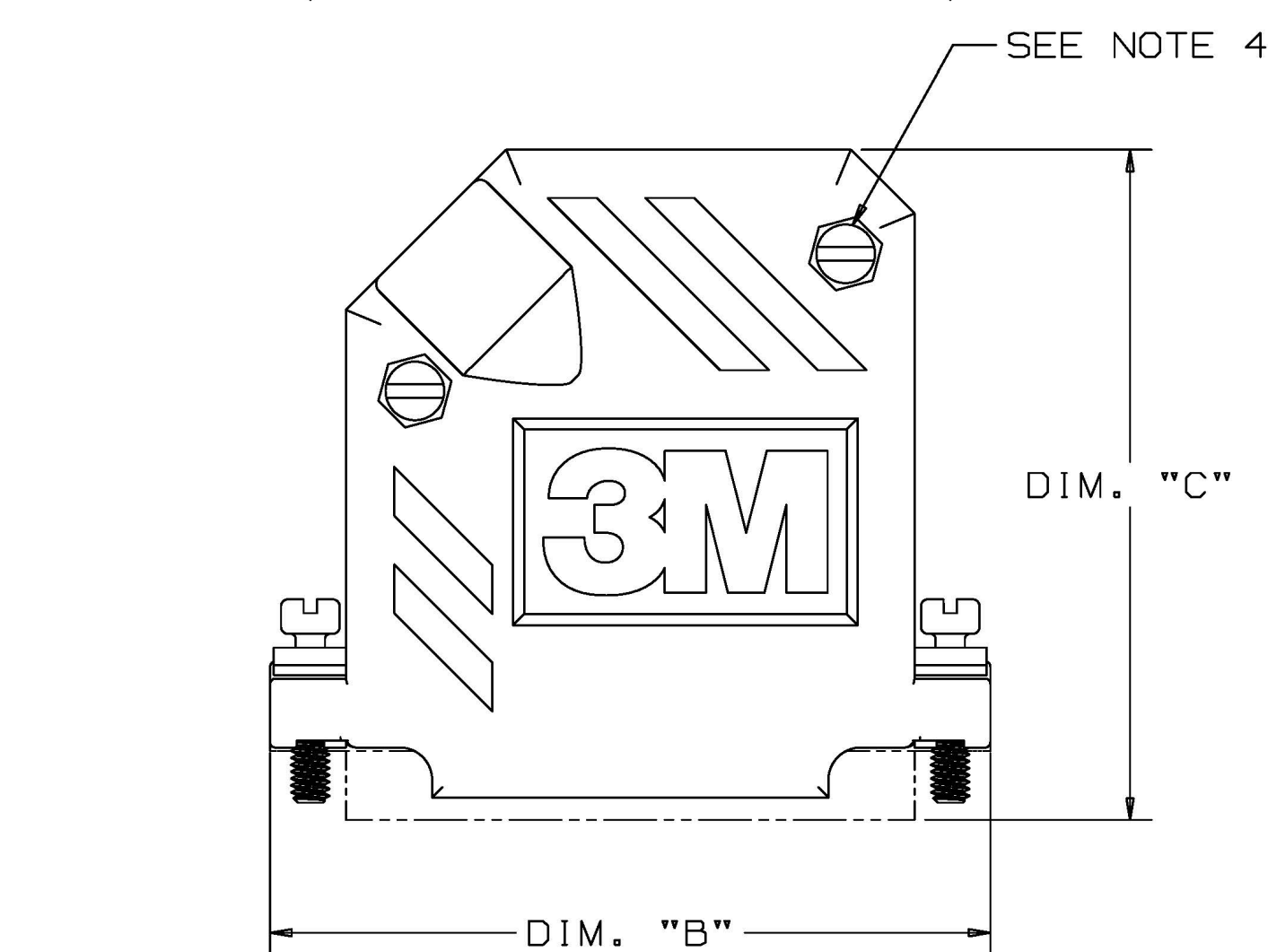
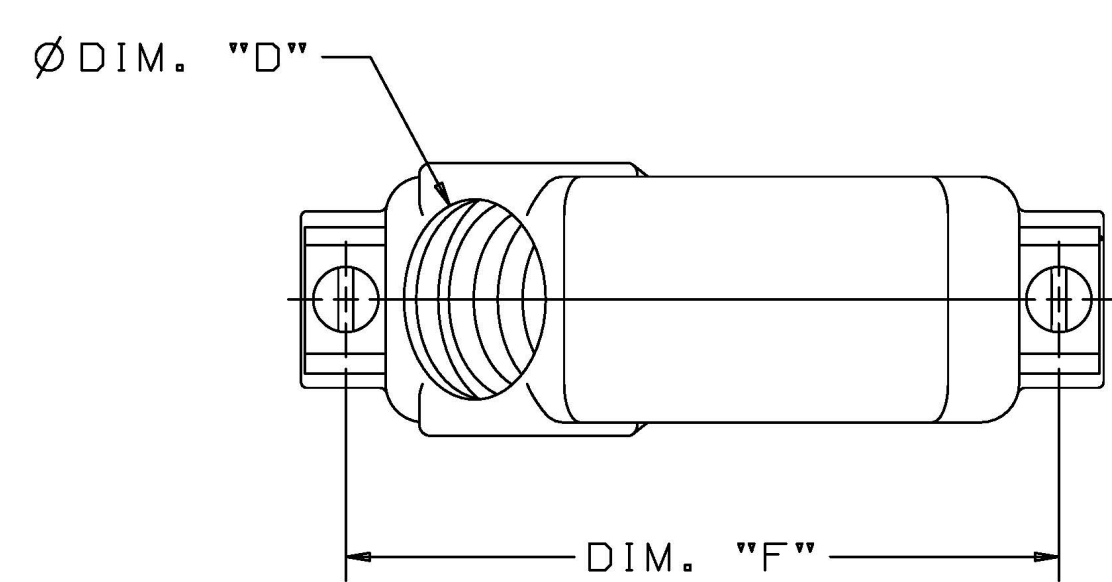


3M™ D-SUB EMI JUNCTION SHELL

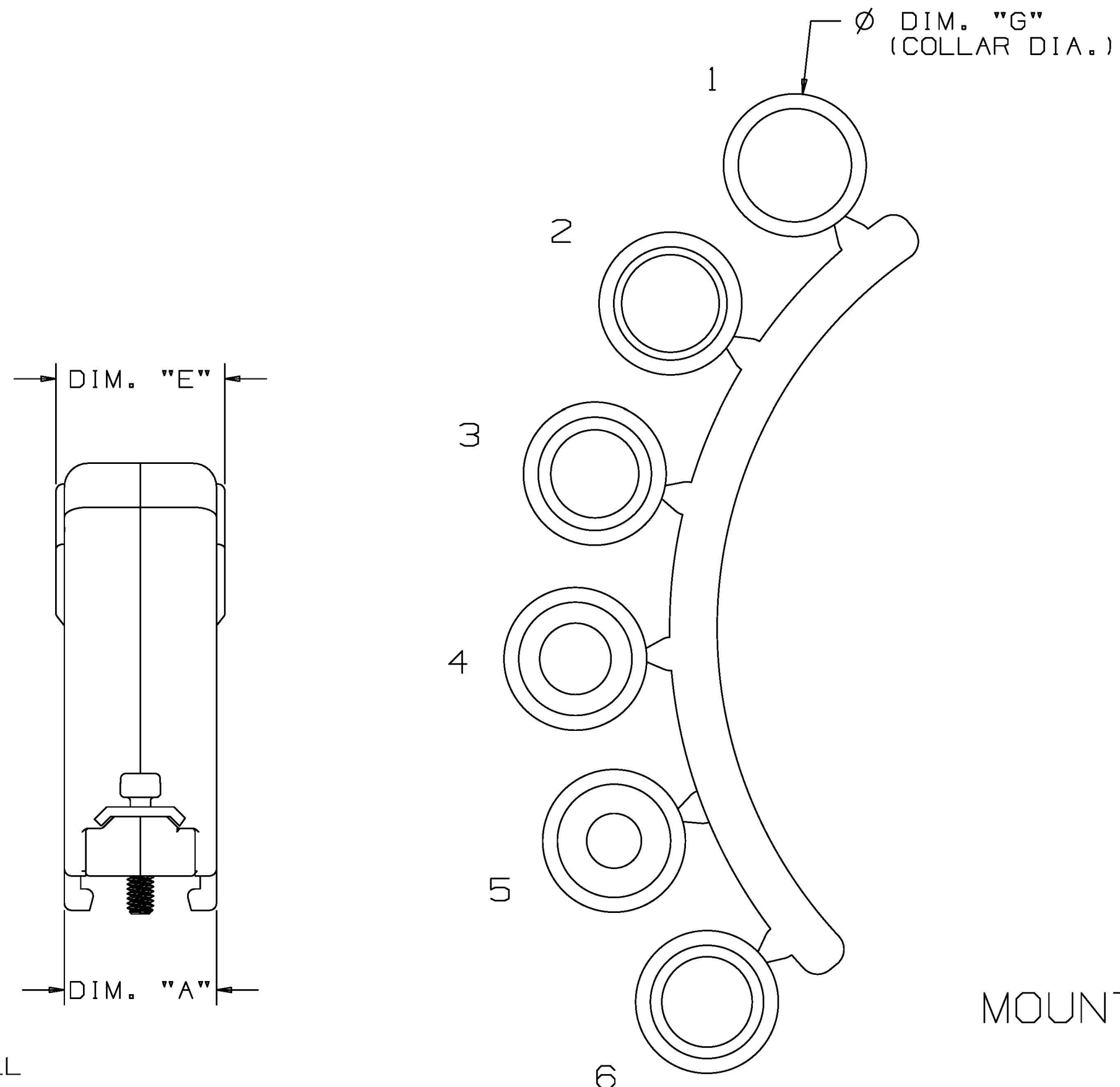
METALIZED PLASTIC

TABLE 1 - COMPRESSION INSERT DIMENSIONS

INSERT FOR	1		2		3		4		5		6		DIM. "G"
	OD	ID	OD	ID	OD	ID	OD	ID	OD	ID	OD	ID	
3357-6509	.475 [12.07]	.320 [8.13]	.360 [9.14]	.315 [8.00]	.360 [9.14]	.285 [7.24]	.360 [9.14]	.255 [6.48]	.360 [9.14]	.210 [5.33]	N/A	N/A	.475 [12.07]
3357-6515	.600 [15.24]	.450 [11.43]	.450 [11.43]	.410 [10.41]	.450 [11.43]	.370 [9.40]	.450 [11.43]	.300 [7.62]	.450 [11.43]	.230 [5.84]	N/A	N/A	.600 [15.24]
3357-6537	.810 [20.57]	.650 [16.51]	.700 [17.78]	.620 [15.75]	.655 [16.64]	.570 [14.48]	.655 [16.64]	.500 [12.70]	.655 [16.64]	.425 [10.80]	.665 [16.64]	.350 [8.89]	.810 [20.57]

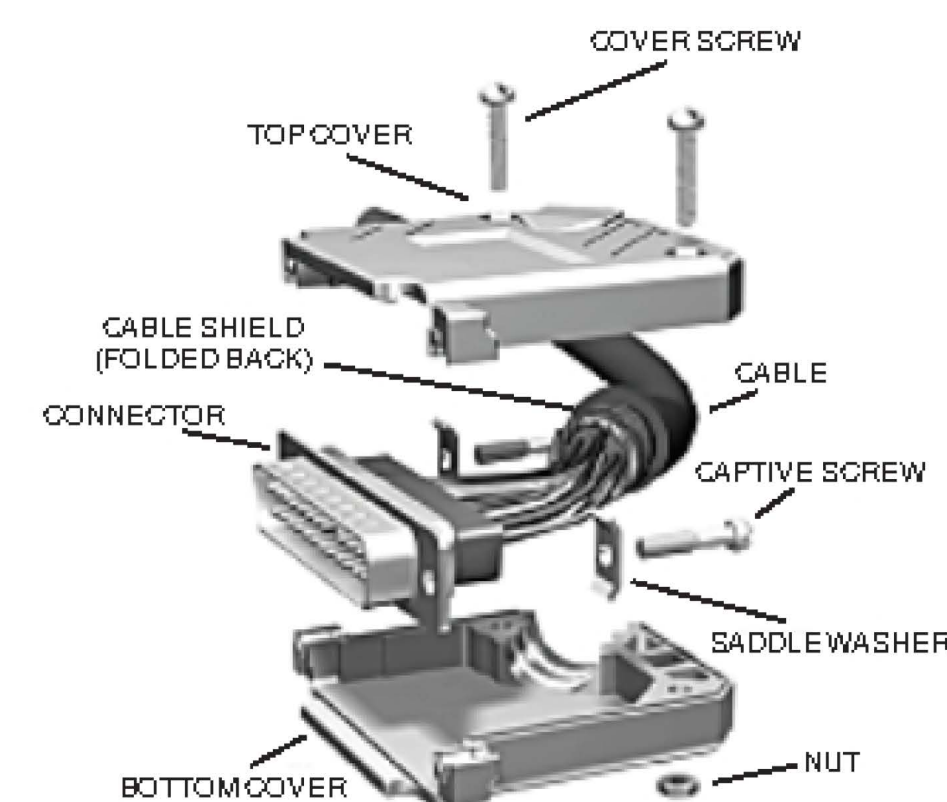


JUNCTION SHELL
SEE TABLE 2



COMPRESSION INSERTS
SEE TABLE 1

- * PROTECTION FROM EMI/ESD.
- * EASY ASSEMBLY HELPS REDUCE TIME AND LABOR TO ENSURE LOW APPLIED COST.
- * LIGHT WEIGHT, COMPACT DESIGN.
- * STRAIN RELIEF COMPENSATES FOR MULTIPLE CABLE DIAMETERS.
- * JACKSCREWS PROVIDE POSITIVE RETENTION.



PHYSICAL :

SHELL :
MATERIAL : ABS
PLATING : NICKEL OVER COPPER

COMPRESSION INSERT :
MATERIAL : THERMOPLASTIC ELASTOMETER
FLAMMABILITY : UL94V-0
DUROMETER : 75±5

HARDWARE : (2) JACKSCREWS #4-40 X .438
(2) SADDLE WASHERS
(2) NUTS #4-40 UNC FOR 9, 15 & 25 POSITION
(3) NUTS #4-40 UNC FOR 37 POSITION
(2) SCREWS #4-40 UNC FOR 9, 15 & 25 POSITION
(3) SCREWS #4-40 UNC FOR 37 POSITION

MATERIAL : STEEL
PLATING : ZINC

MOUNTING HARDWARE :

SEE SPECIFICATION SHEET TS-0142

ENVIRONMENTAL :

TEMPERATURE RATING : 0°C TO +75°C

TABLE 2 - JUNCTION SHELL

3M PART NUMBER	DIMENSIONS						CABLE OD RANGE	
	DIM. "A"	DIM. "B"	DIM. "C"	DIM. "D"	DIM. "E"	DIM. "F"	MIN.	MAX.
3357-6509	.64 [16.3]	1.22 [31.0]	1.58 [40.13]	.40 [10.2]	.64 [16.3]	.984 [24.99]	.210 [5.33]	.320 [8.13]
3357-6515		1.54 [39.1]	1.71 [43.43]			1.312 [33.32]		
3357-6525		2.09 [53.1]	1.88 [47.75]	.52 [13.2]	.71 [18.0]	1.857 [47.17]	.230 [5.84]	.450 [11.43]
3357-6537		2.73 [69.3]	2.12 [53.85]	.73 [18.5]	.91 [23.11]	2.500 [63.50]	.350 [8.89]	.650 [16.51]

ORDERING INFORMATION

3357-65XX-1C

CONNECTOR SIZE:
09 = 9 POSITION
15 = 15 POSITION
25 = 25 POSITION
37 = 37 POSITION

3M ELECTRONICS MATERIALS SOLUTIONS DIVISION
INTERCONNECT SOLUTIONS
<http://www.3M.com/interconnect>

3M IS A TRADEMARK OF 3M COMPANY.
FOR TECHNICAL, SALES OR ORDERING
INFORMATION CALL 800-225-5373

- NOTES
1. REGULATORY INFORMATION:
VISIT 3M.com/regs
 2. COMPRESSION INSERTS CANNOT
BE ORDERED SEPARATELY.
 3. USE APPLICABLE JACK SCREW
OR JACK SOCKET KIT MOUNTING
HARDWARE.
 4. THE 37 POSITION SHELL HAS
3 SCREW HOLES.

DIMENSIONS: INCHES [MM]
[MM] IS FOR REF. ONLY

DESIGN REFERENCE	NEXT ASSEMBLY	REV	ECO	ISSUE DATE AND DESCRIPTION	DRFT	CHKD
		D	116220	MAY 13, 2024 REVISED AND REDRAWN	JNC	FJR
		C	80598	NOV 13, 2008 FIX ERRORS	SBC	SBC
		B	19964	AUG 01, 2008 REVISE ORDERING INFO	DFC	DFC
				MAY 13, 2024		
				MAY 13, 2024		

DIVISION DO NOT SCALE DRAWING THIRD ANGLE PROJECTION INTERPRET PER ASME Y14.5 - 2018 MAX SURFACE ROUGHNESS ALL SURFACES <input checked="" type="checkbox"/> MARKED ONLY	SCALE TOLERANCES EXCEPT AS NOTED INCHES .0 ±.1 .00 ±.01 .000 ±.010 .0000 ±.0005 MILLIMETERS 0 ± .0 ± .00 ± .000 ± ANGLES ±	TITLE D-SUB, EMI JUNCTION SHELL, 45 DEG, METALIZED PLASTIC, CAGE NUMBER DRAWING NO. D 78-5100-0032-2 MODEL DEF LISTS <input type="checkbox"/> YES <input checked="" type="checkbox"/> NO SHT 1 OF 2
---	--	---

DRAWING NUMBER 78-5100-0032-2

REVISION 1

3M™ D-SUB EMI JUNCTION SHELL
METALIZED PLASTIC

Regulatory: For regulatory information about this product, visit 3M.com/regs or contact your 3M representative.

Technical Information: The technical information, guidance, and other statements contained in this document or otherwise provided by 3M are based upon records, tests, or experience that 3M believes to be reliable, but the accuracy, completeness, and representative nature of such information is not guaranteed. Such information is intended for people with knowledge and technical skills sufficient to assess and apply their own informed judgment to the information. No license under any 3M or third party intellectual property rights is granted or implied with this information.

Product Use: Many factors beyond 3M's control and uniquely within user's knowledge and control can affect the use and performance of a 3M product in a particular application. As a result, customer is solely responsible for evaluating the product and determining whether it is appropriate and suitable for customer's application, including conducting a workplace hazard assessment and reviewing all applicable regulations and standards (e.g., OSHA, ANSI, etc.). Failure to properly evaluate, select, and use a 3M product in accordance with all applicable instructions and with appropriate safety equipment, or to meet all applicable safety regulations, may result in injury, sickness, death, and/or harm to property.

Warranty, Limited Remedy, and Disclaimer: Unless a different warranty is specifically stated on the applicable 3M product packaging or product literature (in which case such warranty governs), 3M warrants that each 3M product meets the applicable 3M product specification at the time 3M ships the product. 3M MAKES NO OTHER WARRANTIES OR CONDITIONS, EXPRESS OR IMPLIED, INCLUDING, BUT NOT LIMITED TO, ANY IMPLIED WARRANTY OR CONDITION OF MERCHANTABILITY, FITNESS FOR A PARTICULAR PURPOSE, OR ANY IMPLIED WARRANTY OR CONDITION ARISING OUT OF A COURSE OF DEALING, CUSTOM, OR USAGE OF TRADE. If a 3M product does not conform to this warranty, then the sole and exclusive remedy is, at 3M's option, replacement or repair of the 3M product or refund of the purchase price.


Limitation of Liability: Except for the limited remedy stated above, and except to the extent prohibited by applicable law, 3M will not be liable for any loss or damage arising from or related to the 3M product, whether direct, indirect, special, incidental, or consequential (including, but not limited to, lost profits or business opportunity), regardless of the legal or equitable theory asserted, including, but not limited to, warranty, contract, negligence, or strict liability.

Disclaimer: For industrial use only. Not intended, labeled or packaged for consumer sale or use.

3M Company
Electronics Materials Solutions Division
13011 McCallen Pass, Bldg. C
Austin, TX 78753-5380
1-800-225-5373
www.3M.com/interconnect

3M ELECTRONICS MATERIALS SOLUTIONS DIVISION
INTERCONNECT SOLUTIONS
<http://www.3M.com/interconnect>

3M IS A TRADEMARK OF 3M COMPANY.
FOR TECHNICAL, SALES OR ORDERING
INFORMATION CALL 800-225-5373

DESIGN REFERENCE	NEXT ASSEMBLY	REV	ECO	ISSUE DATE AND DESCRIPTION	DRFT	CHKD
		DRFT	CASTIGLIONE	DATE MAY 13, 2024	MFG	DATE
		CHKD		DATE	APPRV	DATE
					F. RODRIGUEZ	MAY 13, 2024
DIVISION	DIVISION CODE	 © 3M COPYRIGHT 2024 This document and the information it contains are 3M property and may not be reproduced or further distributed without 3M permission, or used or disclosed other than for 3M authorized purposes. All rights reserved.				
DO NOT SCALE DRAWING	SCALE	TOLERANCES EXCEPT AS NOTED INCHES .0 ± .1 .00 ± .01 .000 ± .010 .0000 ± .0005 MILLIMETERS 0 ± .0 ± .00 ± .000 ± ANGLES ±				
THIRD ANGLE PROJECTION	INTERPRET PER ASME Y14.5 - 2018	TITLE D-SUB, EMI JUNCTION SHELL, 45 DEG, METALIZED PLASTIC,				
MAX SURFACE ROUGHNESS	ALL SURFACES	CAGE NUMBER	SIZE	DRAWING NO.	REV.	
<input checked="" type="checkbox"/> MARKED ONLY		D		78-5100-0032-2	D	
		MODEL			DET	ISTS <input type="checkbox"/> YES <input checked="" type="checkbox"/> NO SHT 2 OF 2

DRAWING NUMBER 78-5100-0032-2 REVISION D