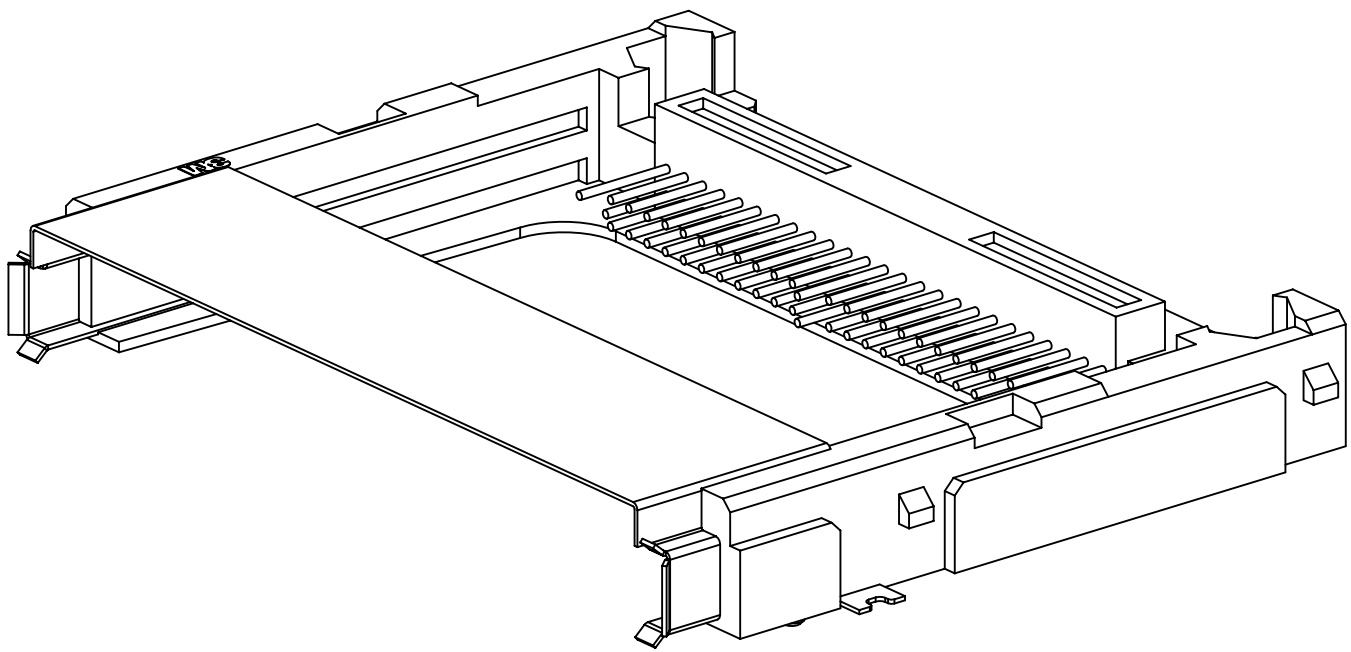
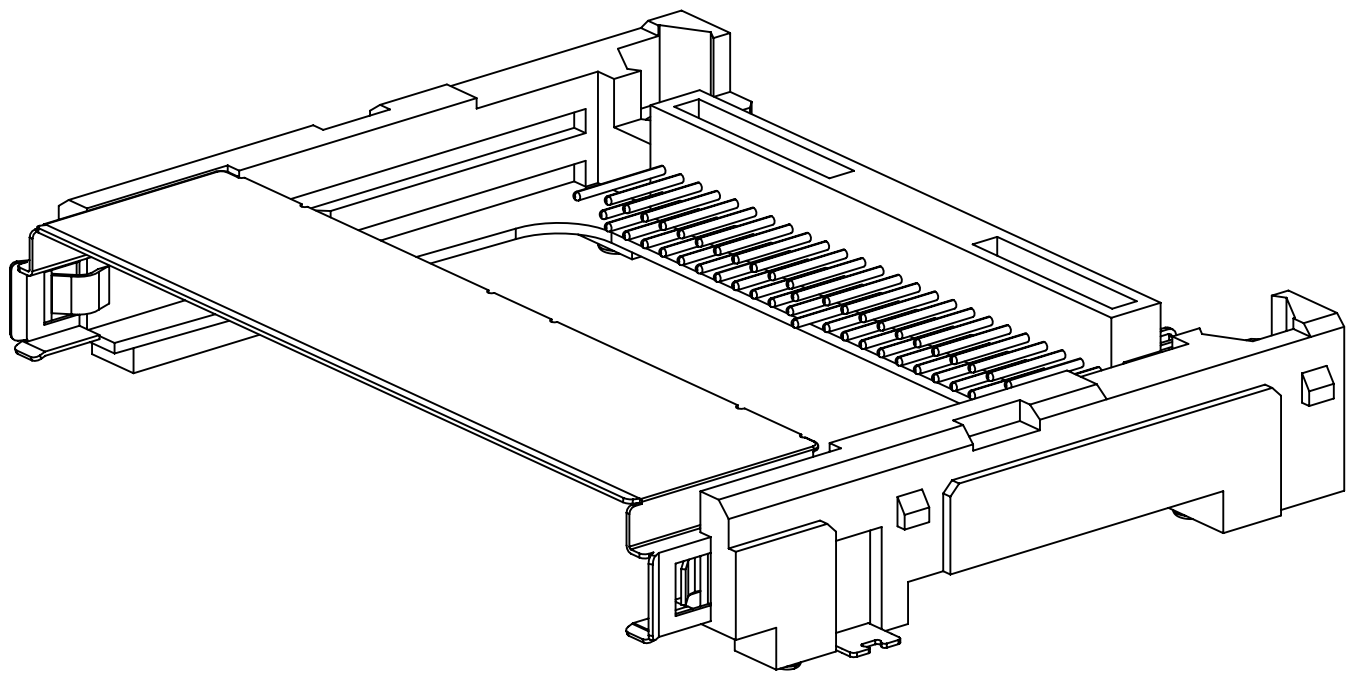


3M™ CF CARD HEADER, 7E50 SERIES
COMPACTFLASH™ TYPE II, LONG GUIDES, SURFACE MOUNT



N7E50-M516XX-40
NO STANDOFF



N7E50-M516XX-50
WITH STANDOFF

- * HEADERS MATE WITH BOTH COMPACTFLASH™ TYPE I AND TYPE II CARDS.
- * POLARIZATION OPTIONS FOR TOP OR BOTTOM BOARDMOUNT.
- * EXTENDED GUIDE RAILS ENABLE ACCURATE AND EASY CARD INSERTION.
- * SINGLE ROW SURFACE MOUNT SOLDER TAILS FACILITATE AUTO PLACEMENT AND IR SOLDERING.
- * OPTION 2 mm BOARD STANDOFF ENABLES BOARD POPULATION.
- * MEETS CFA STANDARDS FOR KNOWN COMPATIBLTY AND RELIABILITY.
- * METAL BRACE PROVIDES STABILITY FOR EJECTOR ATTACHMENT.
- * MULTIPLE STYLES OF EJECTOR AVAILABLE.
- * OPTIONAL EJECTOR CAN BE PURCHASED PER-ASSEMBLED OR SEPARATELY.
- * OPTIONAL TAPE AND REEL OR TRAY PACKAGING FOR AUTOMATED ASSEMBLY.



2 PHYSICAL :

INSULATOR: MATERIAL: HIGH TEMPERATURE THERMOPLASTIC
FLAMMABILITY: UL94V-0
COLOR: BEIGE
CONTACT: MATERIAL: COPPER ALLOY
PLATING: UNDER PLATING: 2.03µm [80µ"] NICKEL-OVERALL
WIPING AREA: 0.38µm [15µ"] OR 0.76µm [30µ"] GOLD
SOLDER TAILS: 3.81µm [150µ"] MATTE TIN OR GOLD FLASH
MARKINGS: 3M LOGO

2 ELECTRICAL :

CURRENT RATING: 0.5 A
INSULATION RESISTANCE: >1 X 10⁹Ω AT 500 V_{DC},
>1 X 10⁹Ω AT 500 V_{DC} AFTER ENVIRONMENTAL CONDITIONING
WITHSTANDING VOLTAGE: 500V_{AC} FOR 1 MINUTE

2 ENVIRONMENTAL :

TEMPERATURE RATING: -40°C TO +85°C
PROCESS RATING: MAXIMUM 260°C, PER J-STD-020C
MOISTURE SENSITIVITY LEVEL: 1 (PER J-STD-020C)

ORDERING INFORMATION
N7E50-X516XX-XX-XXX

M = CF I & II, 31.60 mm, NORMAL TYPE, METAL GUIDE
N = CF I & II, 31.60 mm, INVERSE TYPE, METAL GUIDE

PLATING OPTIONS:
RA = 0.38µm [15µ"] GOLD WITH MATTE TIN TAIL
RB = 0.76µm [30µ"] GOLD WITH MATTE TIN TAIL
EA = 0.38µm [15µ"] GOLD WITH AU FLASH TAIL
EB = 0.76µm [30µ"] GOLD WITH AU FLASH TAIL

BOARD STANDOFF:
40 = NONE
50 = 2.00 mm [.079"]

PRE-ASSEMBLED EJECTOR OPTION:
BLANK = NO EJECTOR
A = RIGHT DUAL PUSH EJECTOR (7E50-B516-05)
C = LEFT DUAL PUSH EJECTOR (7E50-B616-05)

*PACKAGING OPTIONS:
BLANK = STANDARD WHITE POLYSTYRENE TRAYS
WF = TAPE AND REEL (AUTOMATED ASSEMBLY)

NOTE: WF OPTION INCLUDES MOLDED SUCTION CAP FOR AUTOMATED PICK AND PLACE

3M ELECTRONICS MATERIALS SOLUTIONS DIVISION
INTERCONNECT SOLUTIONS
<http://www.3M.com/interconnect>

3M IS A TRADEMARK OF 3M COMPANY.
FOR TECHNICAL, SALES OR ORDERING
INFORMATION CALL 800-225-5373

COMPACTFLASH IS A REGISTERED TRADEMARK OF Sandisk Corporation

NOTES

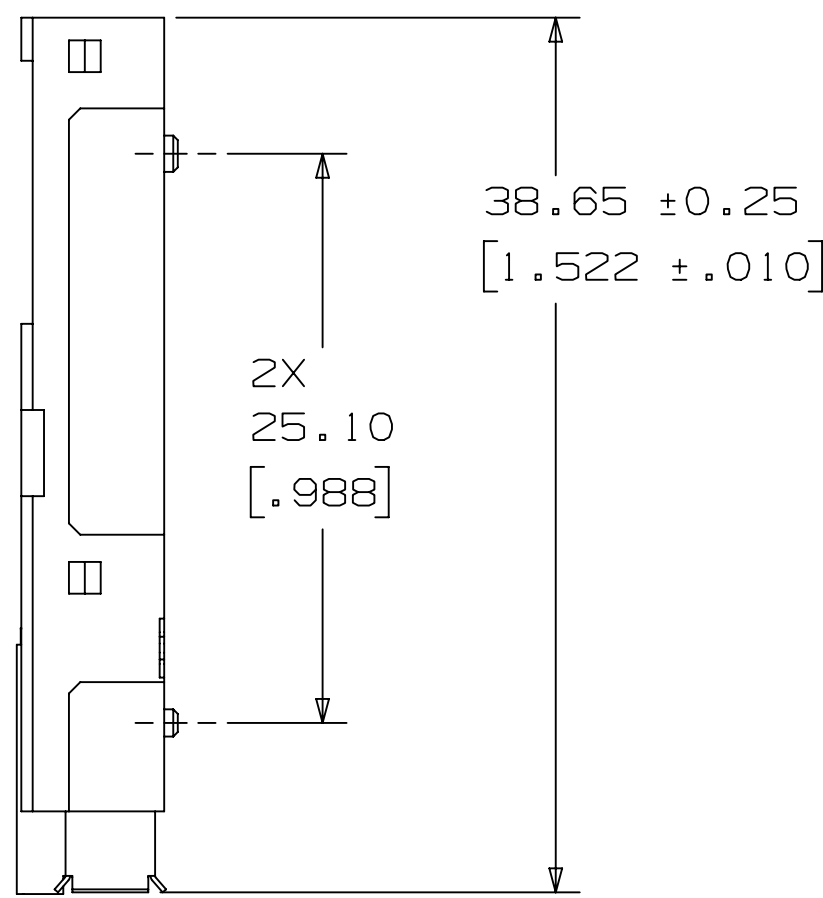
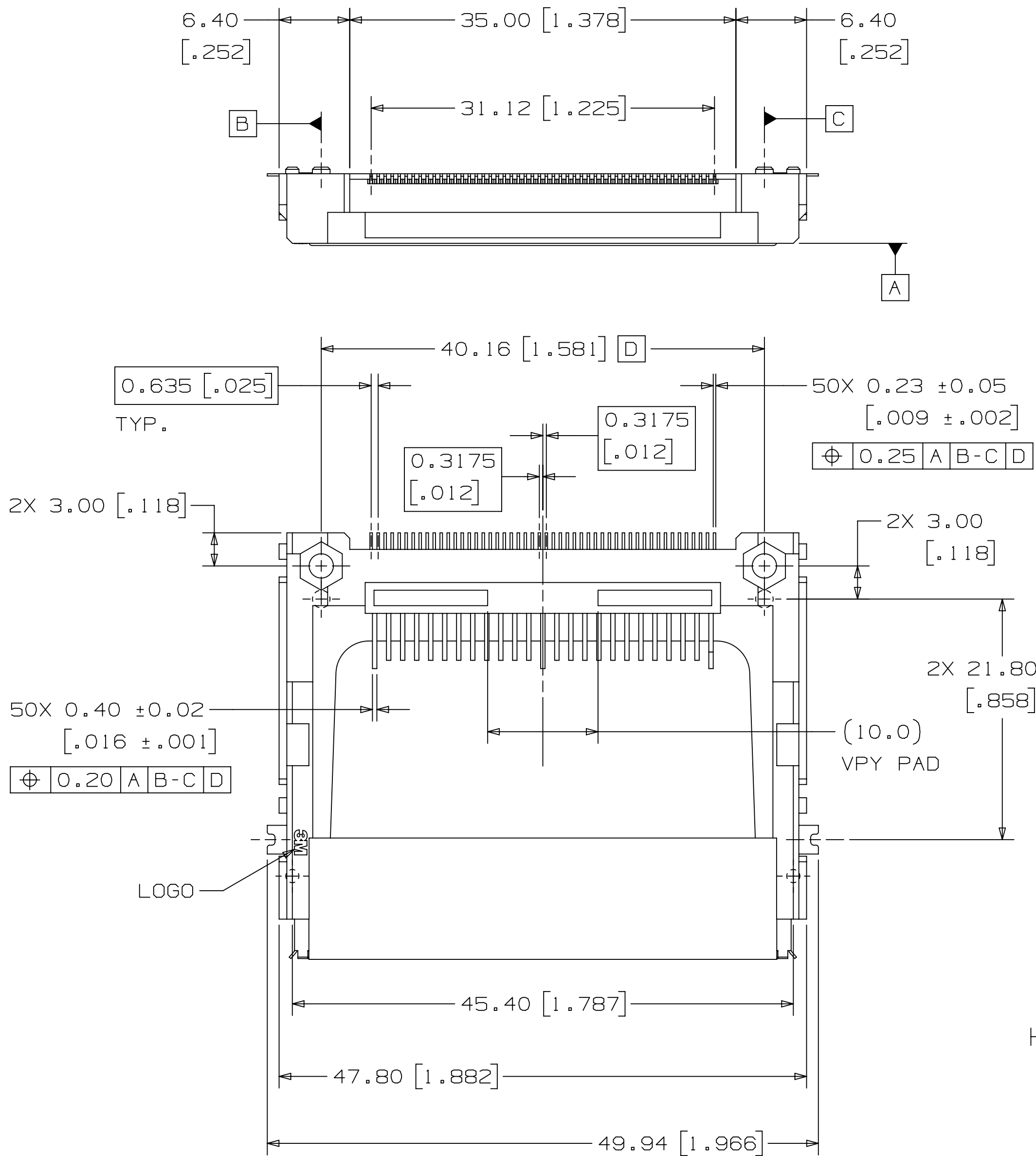
1. REGULATORY INFORMATION:
VISIT 3M.com/regs
2. UNLESS OTHERWISE NOTED, REFERENCES TO INDUSTRY SPECIFICATIONS ARE INTENDED TO INDICATE SUBSTANTIAL COMPLIANCE TO THE MATERIAL ELEMENTS OF THE SPECIFICATION. SUCH REFERENCES SHOULD NOT BE CONSTRUED AS A GUARANTEE OF COMPLIANCE TO ALL REQUIREMENTS IN A GIVEN SPECIFICATION.
3. SEE TS-2154 FOR APPLICABLE EJECTORS AND DRAWNGS OF ASSEMBLED EJECTORS AND HEADERS.

DIMENSIONS: MM [INCHES]
[INCHES] IS FOR REF. ONLY

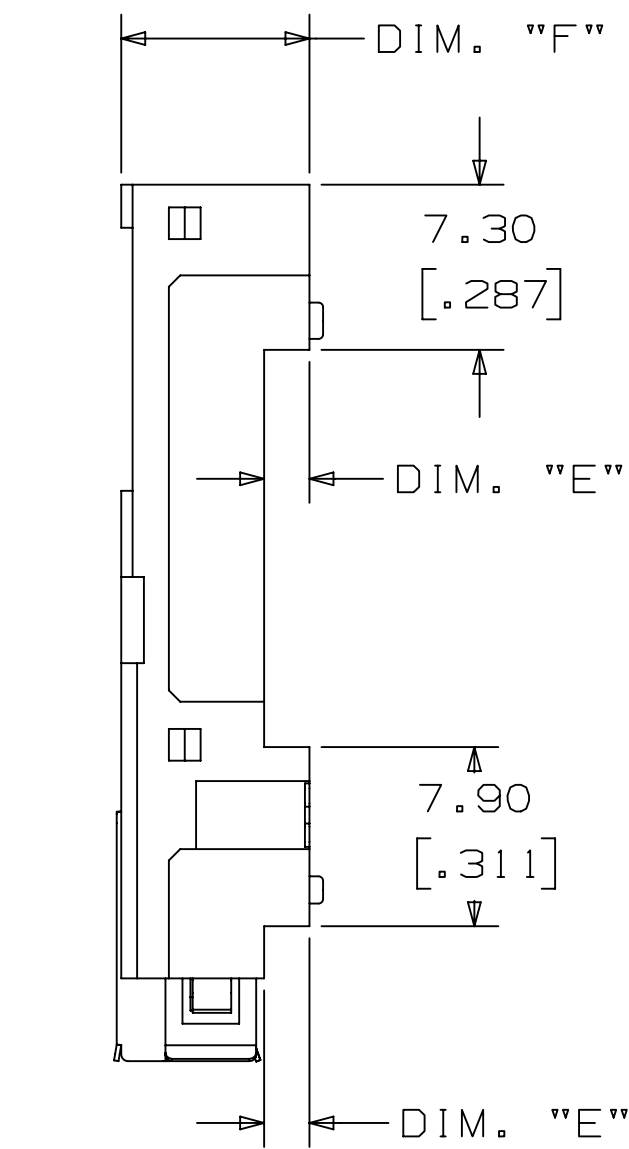
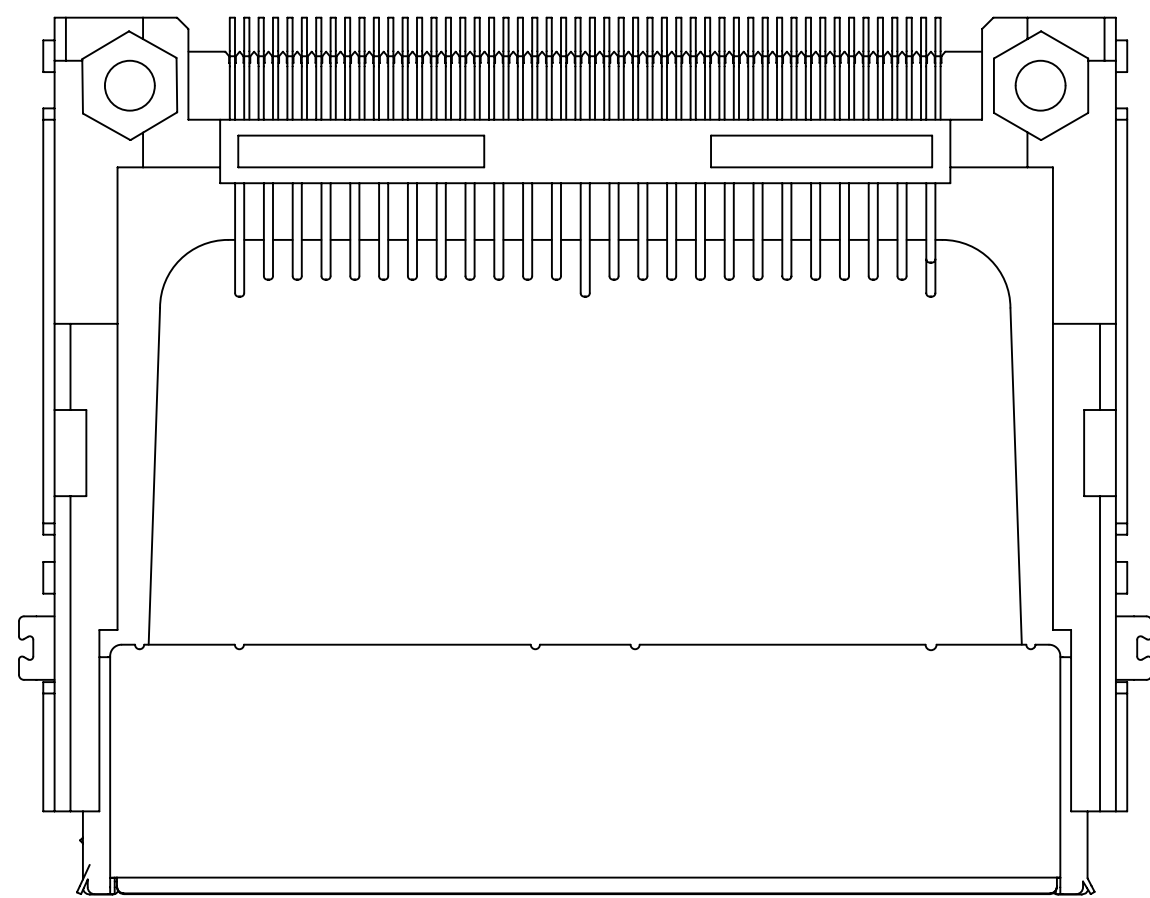
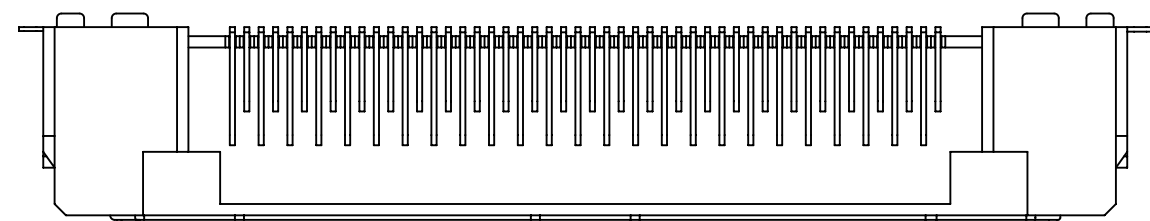
DESIGN REFERENCE	NEXT ASSEMBLY
HEADER CODES	
DIVISION	DIVISION CODE EMSD
DO NOT SCALE DRAWING	SCALE TOLERANCES EXCEPT AS NOTED
THIRD ANGLE PROJECTION	INCHES MILLIMETERS
INTERPRET PER ASME Y14.5 - 2018	INTERPRET PER ASME Y14.5 - 2018
MAX. SURFACE ROUGHNESS ALL SURFACES MARKED ONLY	MAX. SURFACE ROUGHNESS ALL SURFACES MARKED ONLY

H	116140	SEP 17, 2024	JNC	FJR
G	29668	AUG 16, 2010	OKC	KHN
REV	ECO	ISSUE DATE AND DESCRIPTION	DRFT	CHKD
DRFT	CASTIGLIONE	DATE	DATE	DATE
CHKD		DATE	DATE	DATE
3M	3M Center St. Paul, MN 55144	© 3M COPYRIGHT 2024 This document and the information it contains are 3M property and may not be reproduced or further distributed without 3M permission, or used or disclosed other than for 3M authorized purposes. All rights reserved.		
TITLE	CF CARD HEADER, COMPACTFLASH TYPE II, LONG GUIDES, SMT			
CAGE NUMBER	SIZE	DRAWING NO.	REV.	
D	7E50	78-5100-2083-3	H	
MODEL	7E50	DET	ISTS	YES NO SHT 1 OF 5

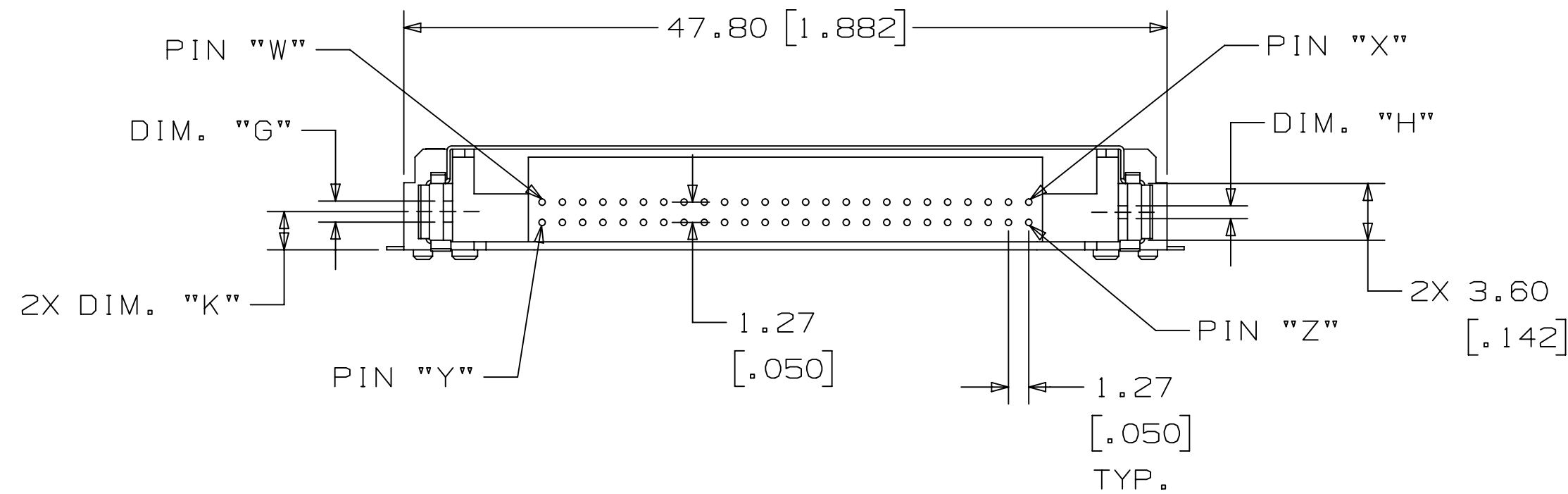
3M™ CF CARD HEADER, 7E50 SERIES
COMPACTFLASH™ TYPE 11, LONG GUIDES, SURFACE MOUNT



HEADER WITHOUT
STANDOFF



HEADER WITH
STANDOFF



PIN FUNCTION	DIM. "L" PIN LENGTH	PIN POSITION
DETECT	3.50 mm [.138]	25, 26
GENERAL USE	4.25 mm [.167]	ALL OTHER PINS
POWER	5.00 mm [.197]	1, 13, 38, 50

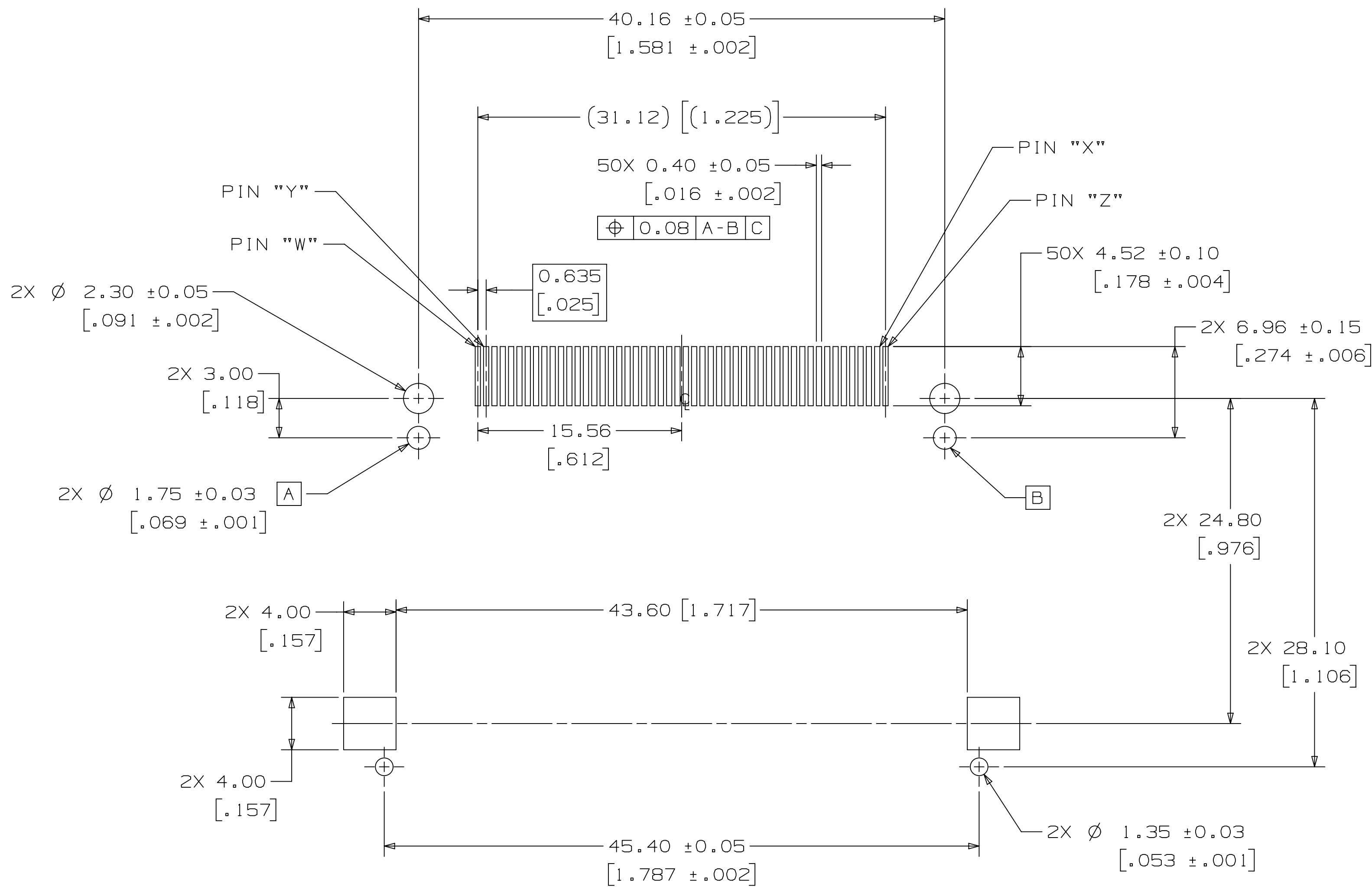
3M ELECTRONICS MATERIALS SOLUTIONS DIVISION
INTERCONNECT SOLUTIONS
<http://www.3M.com/interconnect>

3M IS A TRADEMARK OF 3M COMPANY.
FOR TECHNICAL, SALES OR ORDERING
INFORMATION CALL 800-225-5373

DESIGN REFERENCE	NEXT ASSEMBLY	REV	ECO	ISSUE DATE AND DESCRIPTION	DRFT	CHKD
XXXXXX	XXXXXX	DRFT	CASTIGLIONE	SEP 17, 2024	MFG	DATE
DIVISION	DIVISION CODE	CHKD	DATE	APPRV	F. RODRIGUEZ	DATE
DO NOT SCALE DRAWING	SCALE	TOLERANCES EXCEPT AS NOTED	INCHES	0.00 ±.000	0.00 ±.000	0.00 ±.000
THIRD ANGLE PROJECTION	INTERPRET PER ASME Y14.5 - 2018	MILLIMETERS	0 ±.000	0 ±.000	0 ±.000	0 ±.000
MAX SURFACE ROUGHNESS	ALL SURFACES	MARKED ONLY	ANGLES	0 ±.000	0 ±.000	0 ±.000
TITLE		CAGE NUMBER		DRAWING NO.		REV.
CF CARD HEADER, COMPACTFLASH TYPE 11, LONG GUIDES, SMT		D 78-5100-2083-3		7E50		H
MODEL		LISTS		YES		NO
SHT 2 OF 5		SHT 2 OF 5		SHT 2 OF 5		SHT 2 OF 5

3M™ CF CARD HEADER, 7E50 SERIES
COMPACTFLASH™ TYPE II, LONG GUIDES, SURFACE MOUNT

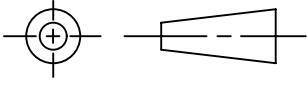

PART NUMBER	DIM. "E" STANDOFF	DIM. "F"	DIM. "G"	DIM. "H"	DIM. "K"	PIN "W"	PIN "X"	PIN "Y"	PIN "Z"
N7E50-M516XX-40	NO STANDOFF	6.30 [.248]	1.40 [.55]	0.80 [.031]	2.35 [.093]	PIN 1	PIN 25	PIN 26	PIN 50
N7E50-M516XX-50	2.00 [.079]	8.30 [.328]	1.40 [.055]	0.80 [.031]	4.35 [.171]	PIN 1	PIN 25	PIN 26	PIN 50
N7E50-N516XX-40	NO STANDOFF	6.30 [.248]	0.80 [.031]	1.40 [.055]	3.95 [.156]	PIN 50	PIN 26	PIN 25	PIN 1
N7E50-N516XX-50	2.00 [.079]	8.30 [.328]	0.80 [.031]	1.40 [.055]	5.95 [.234]	PIN 50	PIN 26	PIN 25	PIN 1
N7E50-H516XX-50	2.00 [.079]	7.90 [.311]	1.40 [.055]	0.80 [.031]	4.15 [.163]	PIN 1	PIN 25	PIN 26	PIN 50



SUGGESTED PCB LAYOUT

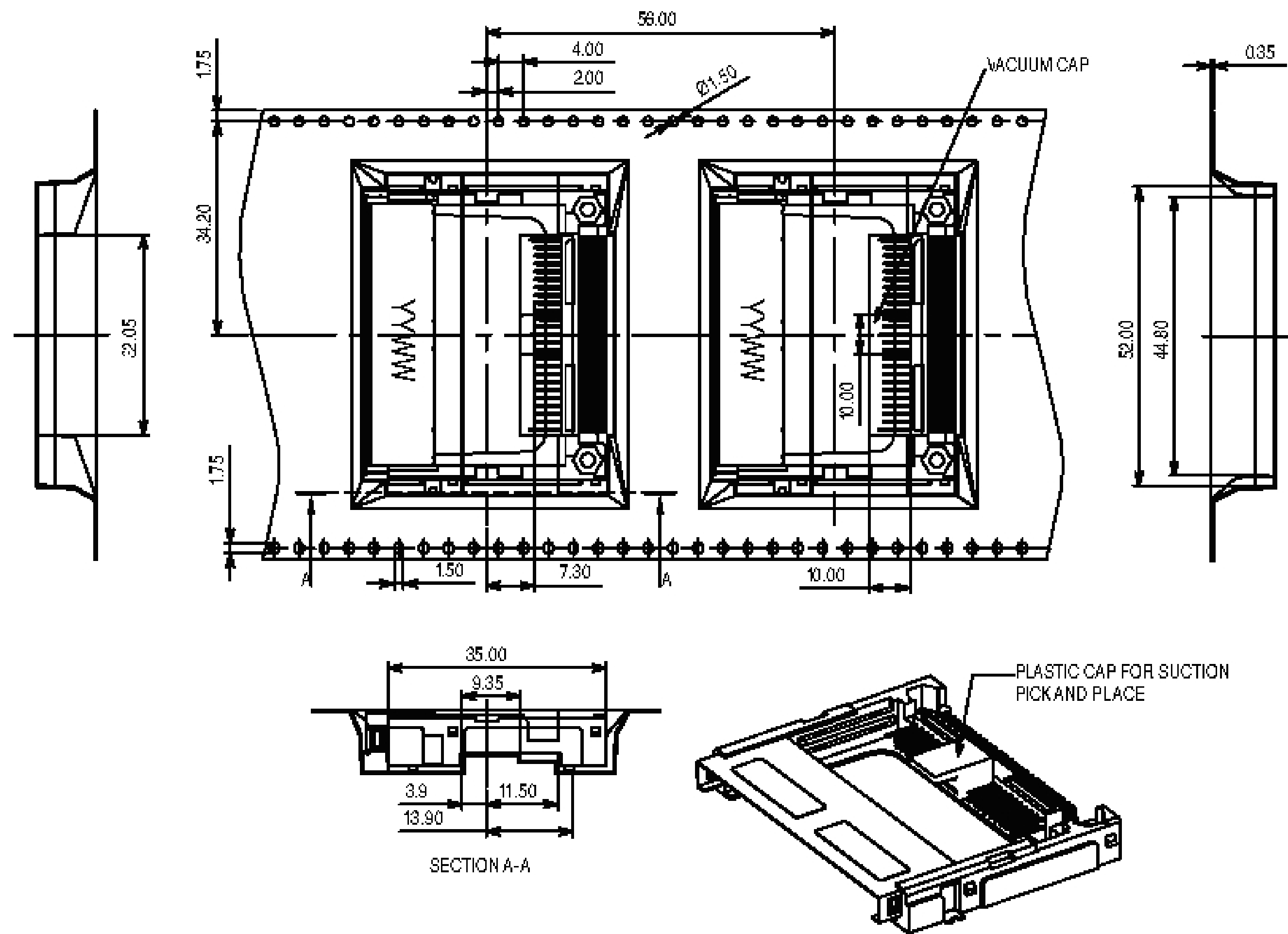
3M ELECTRONICS MATERIALS SOLUTIONS DIVISION
INTERCONNECT SOLUTIONS
<http://www.3m.com/interconnect>

3M IS A TRADEMARK OF 3M COMPANY.
FOR TECHNICAL, SALES OR ORDERING
INFORMATION CALL 800-225-5373

H		116140		SEP 17, 2024		JNC		FJR	
G		29668		AUG 16, 2010		OKC		KHN	
DESIGN REFERENCE ADDRESS CODES NEXT ASSEMBLY				REV ECD ISSUE DATE AND DESCRIPTION DATE 17, 2024 INFO DATE APPR. F. RODRIGUEZ DATE					
DIVISION DO NOT SCALE DRAWING  THIRD ANGLE PROJECTION INTERPRET PER ASME Y14.5 - 2018 MAX SURFACE ROUGHNESS <input checked="" type="checkbox"/> ALL SURFACES <input type="checkbox"/> MARKED ONLY				DIVISION CODE EMSD TOLERANCES EXCEPT AS NOTED INCHES .00 ± .00 .00 ± 0.2 .000 ± .010 MILLIMETERS .0 ± .3 .00 ± 0.2 .00 ± .100 ANGLES ±					
 3M Center St. Paul, MN 55144				© 3M COPYRIGHT 2024 This document and the information it contains are 3M property and may not be reproduced or further distributed without the written permission, or used or disclosed other than for 3M authorized purposes. All rights reserved.					
TITLE CF CARD HEADER, COMPACTFLASH TYPE 11, LONG GUIDES, SMT				CAGE NUMBER D 78-5100-2083-3		DRAWING NO. H		REV. H	
MODEL 7E50				DET. LISTS <input checked="" type="checkbox"/> YES <input type="checkbox"/> NO		SHT 3 OF			

3M™ CF CARD HEADER, 7E50 SERIES
COMPACTFLASH™ TYPE II, LONG GUIDES, SURFACE MOUNT

TAPE AND REEL FOR AUTOMATED PICK AND PLACE
(NO EJECT ATTACHED)

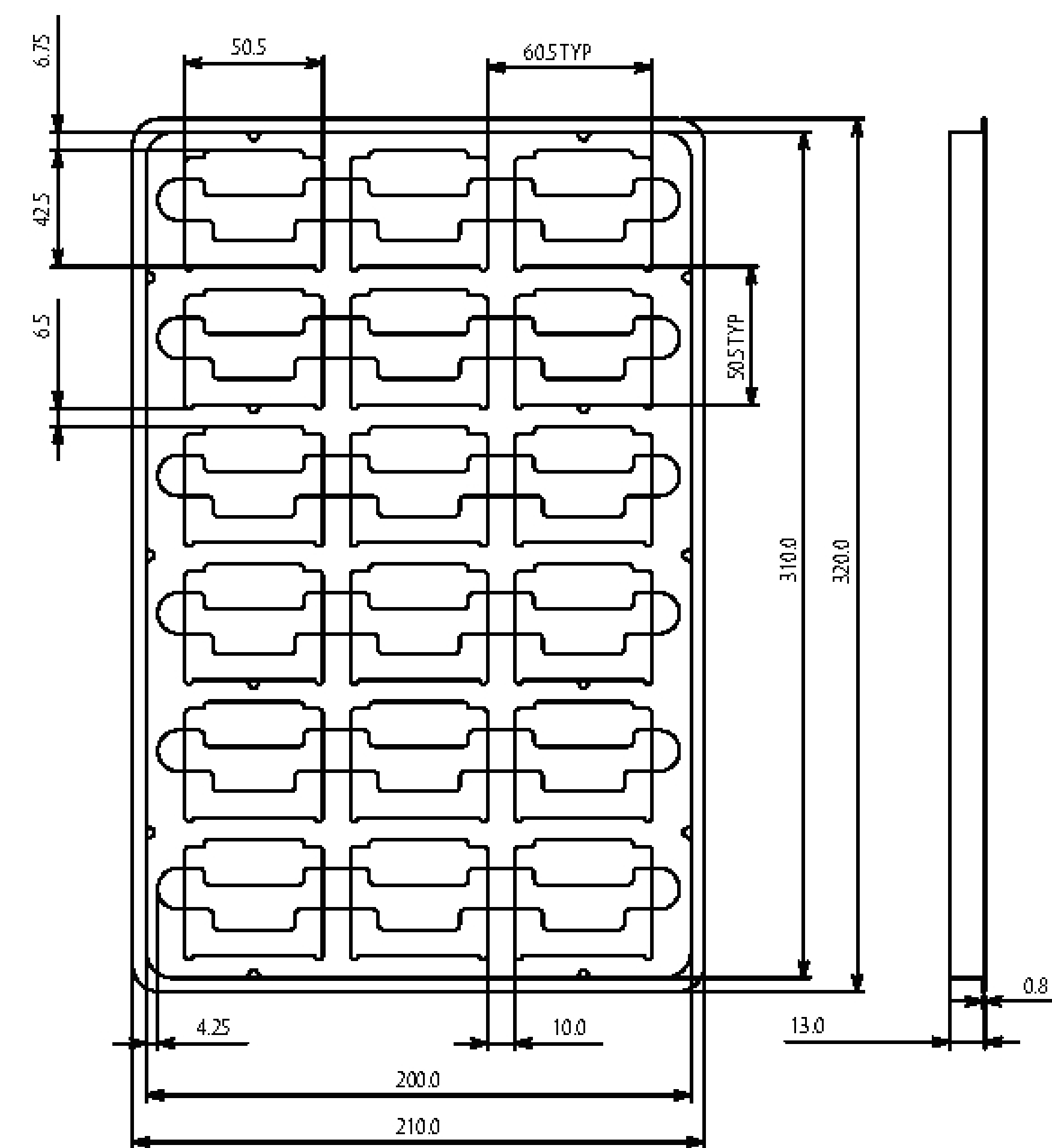


NOTES :

1. MATERIAL: PS
2. PACKAGING QUANTITY:
 - 1 REEL: 100 PCS.
 - 1 CARTON: 4 REELS PER CARTON (400 PCS TOTAL)
3. CARTON SIZE: 725MM (L) BY 375MM (W) BY 320MM (H)
4. FOR TAPE AND REEL PACKAGING WITH REMOVABLE VACUUM CAP FOR SUCTION PICK AND PLACE OPERATIONS.
5. FOR PRODUCT WITH ATTACHED EJCTORS CONTACT 3M TECHNICAL SERVICES FOR DIMENSIONED DRAWINGS.

3M ELECTRONICS MATERIALS SOLUTIONS DIVISION
INTERCONNECT SOLUTIONS
<http://www.3M.com/interconnect>

3M IS A TRADEMARK OF 3M COMPANY.
FOR TECHNICAL, SALES OR ORDERING
INFORMATION CALL 800-225-5373

STANDARD WHITE POLYSTYRENE TRAYS
(NO EJECT ATTACHED)

NOTES:

1. MATERIAL: PS
2. PACKAGING QUANTITY:
 - 1 TRAY: 18 PCS.
 - 1 CARTON BOX: 15 TRAYS PER CARTON (270 PCS TOTAL)
3. CARTON SIZE: 340MM (L) BY 230MM (W) BY 255MM (H)
4. STANDARD TRAY PACKAGING IS NOT SUITABLE FOR SUCTION TYPE PICK AND PLACE OPERATIONS. PICK AND PLACE CAPABLE TRAY PACKAGING IS AVAILABLE ON REQUEST. CONTACT 3M TECHNICAL SERVICE.
5. FOR PRODUCT WITH PRE-ASSEMBLED EJECTORS CONTACT 3M TECHNICAL SERVICES FOR DIMENSIONED DRAWINGS.

CONTACT INGS.		H 116140		SEP 17,2024		JNC		FJR	
		G 29668		REVISE INSULATION RESISTANCE & REDRAW				OKC KHN	
				AUG 16,2010 REVISE NOTES AND DIM'S					
DESIGN REFERENCE		NEXT ASSEMBLY		REV ECO		ISSUE DATE AND DESCRIPTION		DRFT CHKD	
ACCESS CODES				DRF CASTIGLIONE		DATE SEP 17,2024		MFG DATE	
				CHKD		DATE		APPRV. F. RODRIGUEZ	
DIVISION		DIVISION CODE EMISO		3M		© 3M COPYRIGHT 2024			
DO NOT SCALE DRAWING		TOLERANCES EXCEPT AS NOTED		St. Paul, MN 55144		This document and the information it contains are 3M property and may not be reproduced or further distributed without 3M permission, or used on or disclosed other than for 3M authorized purposes. All rights reserved.			
THIRD ANGLE PROJECTION		INCHES 0.0 ± .00 ± .000 ± .0000 ±		TITLE CF CARD HEADER, COMPACTFLASH TYPE 11, LONG GUIDES, SMT					
INTERPRET PER ASME Y14.5 - 2018		MILLIMETERS 0 ±2 .0 ±.3 .00 ±0.2 .000 ±.100		CAGE NUMBER		SIZE DRAWING NO.		REV.	
MAX. SURFACE ROUGHNESS ALL SURFACES MARKED ONLY		ANGLES		D 78-5100-2083-3		H			
				MODEL 7E50		DET. LISTS <input type="checkbox"/> YES <input checked="" type="checkbox"/> NO		SHT 4 OF 5	

