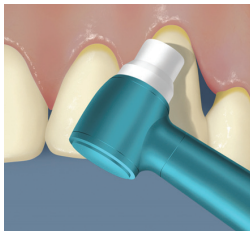
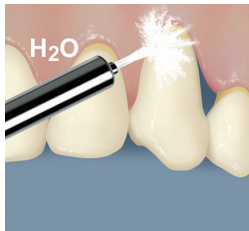


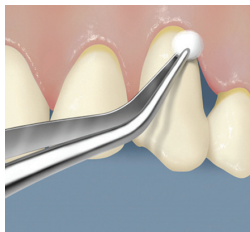
Adper™ Scotchbond™ SE Self-Etch Adhesive



1



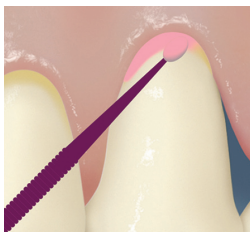
2



3



4



5

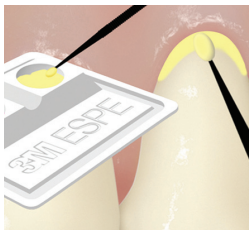


6

Adper™ Scotchbond™ SE Self-Etch Adhesive



7



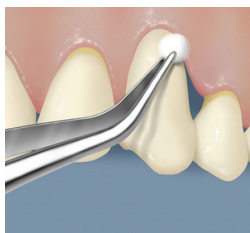
8



9



10



11

Adper™ Scotchbond™ SE
Self-Etch Adhesive

Adper™ Scotchbond™ SE
Self-Etch Adhesive

3M, ESPE, Adper, and Scotchbond are trademarks of 3M or 3M Deutschland GmbH.
Used under license in Canada. © 3M 2012. All rights reserved.



3M ESPE
Dental Products
2510 Conway Avenue
St. Paul, MN 55144-1000 USA



3M Deutschland GmbH
Dental Products
Carl-Schurz-Strasse 1
D-41453 Neuss, Germany



44-0007-4689-9-A

