

# Sof-Lex™

Spiral Finishing and Polishing Wheels



Clinical Case and photos courtesy of  
**Dr. Jeff Blank, Fort Mills, SC**



Preoperative condition showing recurrent tooth decay.

**3M** ESPE



## Step 1

Isolation with rubber dam.

**3M** ESPE



## Step 2

Prepared tooth.

**3M** ESPE





### Step 3

Selective enamel etch for 15 seconds then rinse and lightly dry.

**3M** ESPE



#### Step 4

Apply Scotchbond™ Universal Adhesive for 20 seconds with scrubbing motion.

**3M** ESPE



## Step 5

Air dry adhesive for a minimum of 5 seconds.

**3M** ESPE



## Step 6

Light cure adhesive for 10 seconds.

**3M** ESPE





## Step 7

Placement of Filtek™ Supreme Ultra Universal Restorative in increments.

**3M** ESPE



## Step 8

Sculpt Filtek™ Supreme Ultra Universal Restorative.

**3M** ESPE



## Step 9

Light cure according to the instructions for use.

**3M** ESPE



## Step 10

Refine margins and anatomy.

**3M** ESPE





## Step 11

3M™ ESPE™ Sof-Lex™ Spiral Finishing and Polishing Wheels.

**3M** ESPE



Surface prior to Sof-Lex™ Spiral Finishing and Polishing Wheels.

**3M** ESPE



## Step 12

Smooth and remove scratches using the Sof-Lex™ Spiral Finishing Wheel.

Note: Sof-Lex Spiral Finishing wheel should be used on a slow-speed handpiece at the recommended speeds of 10,000-20,000 rpm.

**3M** ESPE

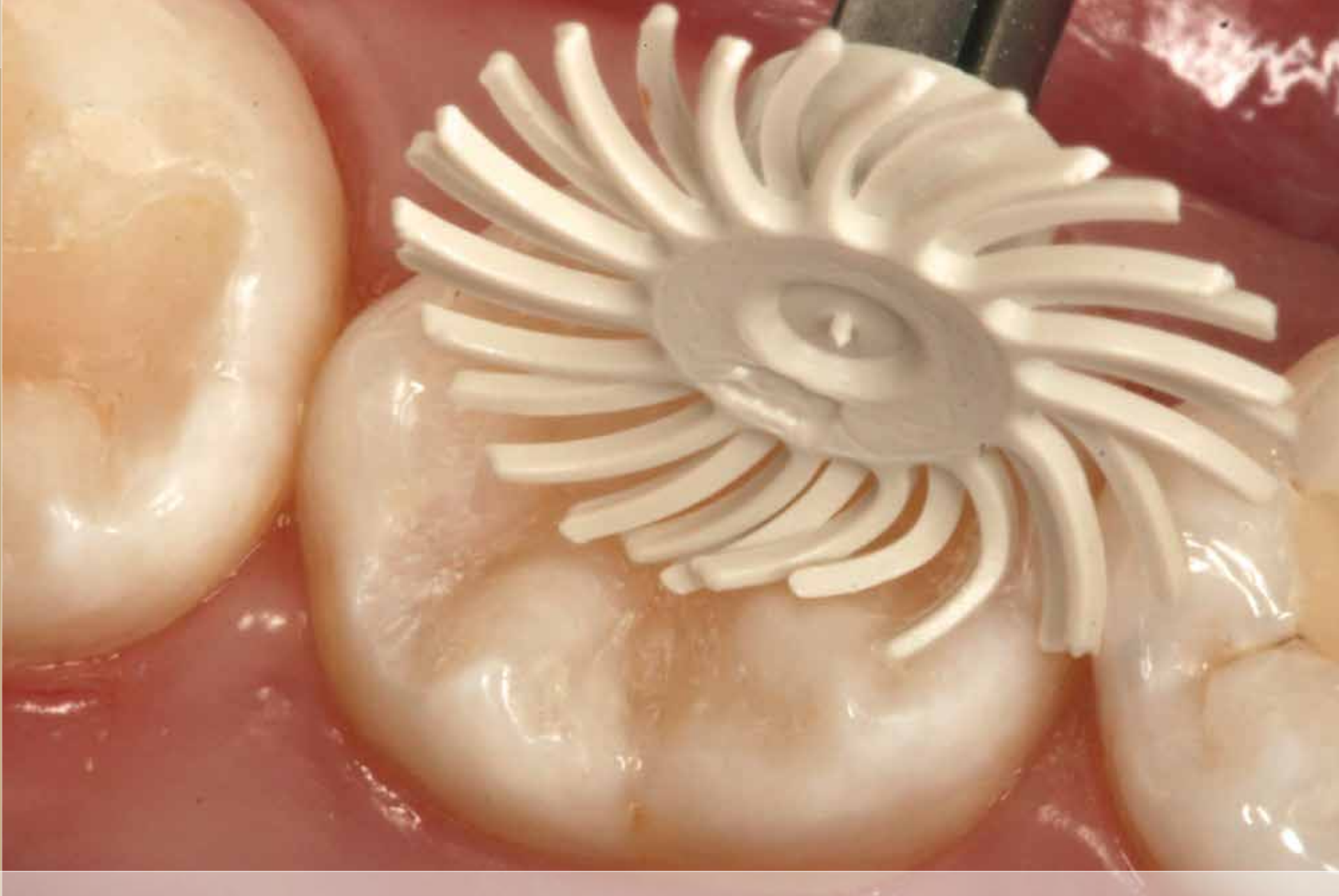




Surface after using the Sof-Lex™ Spiral Finishing Wheel.

**3M** ESPE





## Step 13

Polish to a high gloss using the Sof-Lex™ Spiral Polishing Wheel.

Note: Sof-Lex Spiral Polishing wheel should be used on a slow-speed handpiece at the recommended speeds of 10,000-20,000 rpm.

**3M** ESPE



Surface after using the Sof-Lex™ Spiral Polishing Wheel.

**3M** ESPE



Final result immediately post-op.

**3M** ESPE