

Description

This information folder contains pavement surface preparation and application procedures for 3M™ Stamark™ removable pavement marking tapes (the "Tape"). Tapes are for use for temporary traffic diversion during roadway work zone construction. Roads can be opened to traffic immediately after Tape application.

3M™ Stamark™ Removable Tapes

- 3M™ Stamark™ Wet Retroreflective Removable Tape 710IR
- 3M™ Stamark™ Wet Retroreflective Removable Tape 711IR
- 3M™ Stamark™ Non-Retroreflective Removable Tape 715IR, Black

Application

Only apply Tape to surfaces conforming to the [3M Road Surface Guide for 3M™ Stamark™ Pavement Marking Tapes](#). Areas newly marked with Tape can be opened to traffic immediately following application.

General Application Requirements

- Minimum air and pavement temperatures of 50°F (10°C) and rising
- Clean and dry pavement surface
- Tape must be wide enough to delineate with a single taped line.
- Tape must be wide enough to cover existing markings with a single taped line.
- Butt splices must be used. Do NOT overlap Tape ends.
- Do NOT apply Tape on longitudinal seams or joints.

NOTE

The Tape's service life may be limited in areas of high traffic encroachment or of rough, exposed aggregate surfaces (for example tined Portland cement or open graded asphalt cement concrete). In such situations, 3M recommends inspecting the Tape for replacement at least every two months.

Surface Preparation Adhesive

Surface preparation adhesive is NOT needed when applying Tape under normal conditions. Installers may use a 3M™ Stamark™ Surface Preparation Adhesive SPA60 or 3M™ Stamark™ Surface Preparation Adhesive P-50 to improve initial and long term adhesion when applying Tape under marginal weather condition. See [3M Information Folder 5.17](#) and [3M Information Folder 5.21](#) for detailed surface preparation adhesive application instructions.

Marginal weather conditions include, but are not limited to, circumstances where:

- Air and pavement temperatures have NOT exceeded 50°F (10°C) for the majority of the 24 hours preceding application.
- Prolonged or heavy rainfall is predicted for the 24 hours preceding Tape application.
- Applications occur in the early spring or late fall, outside of the typical road construction season.

NOTE

Using a surface preparation adhesive increases Tape adhesion, which can make removal more difficult. Tape may break more often during removal and additional force may be required during removal of Tape applied with a surface preparation adhesive.

NOTE

3M does not recommend using any surface preparation adhesive when the Tape is used to cover permanent markings intended for reuse.

Long Line Application Procedure

Follow the procedure described below when installing Tape as edge, lane, or channelizing lines.

1. Ensure the application environment meets all of the requirements listed above.
2. Remove the curing compound from new concrete that has been open to traffic for less than 30 days by shot-blasting, hydroblasting, sand-blasting, or lightly grinding the pavement surface.

NOTE

The pavement surface must be allowed to dry a minimum of 24 hours after hydroblasting.

3. Clean the surface of the road where the tape will be applied using a high pressure, high velocity compressed air blower with:
 - A minimum airflow of 185 cfm airflow and 120 psi at the air nozzle
 - No more than 50 feet of 3/4-inch ID hose from the compressor to the air nozzle and the
 - An air nozzle with an interior diameter of at least 1/2 in. (1.3 cm)
 - A moisture and oil trap
 - 3M recommends the air nozzle be no more than two feet from the ground.A street sweeper or pickup broom may also be effective to remove larger or adhered debris, but installers will still need to perform a final pass with the air compressor to completely clean the surface. The road surface must be dry prior to applying tape. Do NOT apply tape to any sealed surface before the sealing emulsion is cured and loose aggregate has been removed.
4. Mark the road according to the applicable state department of transportation or Federal Highway Administration guidelines.
5. OPTIONAL: For marginal weather conditions, installers can apply a surface preparation adhesive. See [3M Information Folder 5.17](#) and [3M Information Folder 5.21](#) for detailed surface preparation adhesive application instructions.
6. Apply Tape using a manual or motorized tape cart.
7. Tamp the tape thoroughly with a tamper cart with a minimum 200 pound (91 kg) load, or a vehicle equipped with a pointing device to help keep the vehicle on the tape. Make a minimum of six passes, or slowly drive over the tape for a total of six tire hits with a vehicle (three vehicle passes). 3M does NOT recommend using vehicle tires to tamp intersection markings.
 - a. If the applied tape is wider than the roller or vehicle tire, make additional passes to ensure the full width of the tape has been adequately tamped to the road surface.
8. Check to ensure all Tape edges are firmly adhered to the road surface.
9. Cut Tape 1 in. (2.5 cm) away from both sides of any cracks or joints to help prevent adhesion issues on cracked pavement surfaces and bridge expansion joints. See Figure 1.
10. Roads may be opened to traffic as soon as the Tape has been properly tamped.

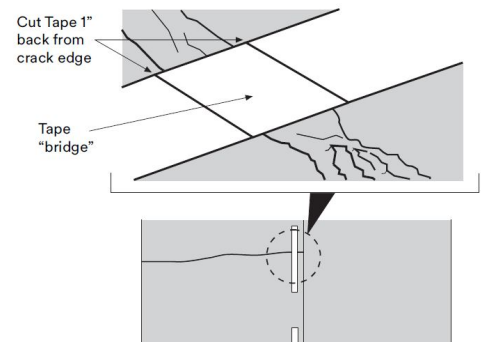


Figure 1. Cutting Tape Applied Over Cracks and Expansion Joints

Removal

Any Tape installations that have been subjected to high traffic flows (ADT > 10,000), installed on marginal pavement surfaces, left on pavement for long periods (more than six months), or which are being removed at low temperatures, are more difficult to remove. Under most other conditions, Tape can be removed largely intact or in large pieces from asphalt and smooth Portland cement concrete surfaces at temperatures above 40°F (4°C) without the use of heat, solvents, grinding, or sandblasting. At temperatures below 40°F (4°C), Tape may be more difficult to remove in large pieces and may leave residue on the pavement surface. Always wear gloves and eye protection when removing Tape.

Use the following procedure to remove Tape:

1. Pry up the edge of the Tape using a chisel-like tool.
2. Hand or machine pull Tape straight up (at an angle of approximately 90°, relative to the pavement).

NOTE

3M does NOT recommend either burning or grinding for Tape removal. In areas of high encroachment, or where Tape has been installed on rough exposed aggregate surfaces, removal and replacement of Tape may be required during normal construction season. In such instances, mechanical methods, such as high pressure water blasting, may be required to remove Tape.

NOTE

The user is responsible for determining the Tape's suitability for their specific application.

NOTE

Tape must be removed before asphalt overlay is installed.

3M Related Literature

In addition to other 3M bulletins specified in this document, the following bulletins provide details users may need to successfully apply 3M™ Stamark™ removable pavement marking tapes. Contact a 3M representative for additional guidance if needed.

- [3M Information Folder 5.17](#) 3M™ Stamark™ Surface Preparation Adhesive P-50 Instructions for use with 3M™ Stamark™ Pavement Marking Tapes
- [3M Information Folder 5.21](#) 3M™ Stamark™ Low VOC Surface Preparation Adhesive SPA60 Spray Application Instructions for Bulk Liquid for Longitudinal Pavement Marking Tapes
- [3M Product Bulletin 710IR](#) 3M™ Stamark™ Removable Tape Series 710IR
- [3M Road Surface Guide for 3M™ Stamark™ Pavement Marking Tapes](#)

Health and Safety

Chemicals

When handling any chemical products, read the manufacturers' container labels and the safety data sheets (SDS) for important health, safety, and environmental information.

[Follow this link to obtain SDS sheets for 3M products.](#)

[Follow this link to obtain information about substances of very high concern \(SVHC\) for EU products.](#)

Tools and Equipment Usage

When using any equipment, always follow the manufacturer's instructions for safe operation.

Warranty Information

Technical Information

Technical information, guidance, and other statements provided by 3M are based upon records, tests, or experience that 3M believes to be reliable, but the accuracy, completeness, and representative nature of such information is not guaranteed. Such information is intended for people with knowledge and technical skills sufficient to assess and apply their own informed judgment to the information. No license to any intellectual property rights is granted or implied with respect to this technical information.

Product Selection and Use

Many factors beyond 3M's control and uniquely within user's knowledge and control can affect the use and performance of a 3M product in a particular application. Customer is solely responsible for evaluating the product and determining whether it is appropriate and suitable for customer's application, including conducting a workplace hazard assessment, reviewing all applicable regulations and standards, and reviewing the product label and use instructions. Failure to properly evaluate, select, and use a 3M product in accordance with instructions or to meet all applicable safety regulations may result in injury, sickness, death, and/or harm to property.

Warranty, Limited Remedy, and Disclaimer

Unless a different warranty is specifically stated on the applicable 3M product packaging or product literature (in which case such warranty governs), 3M warrants that each 3M product meets the applicable 3M product specification at the time 3M ships the product. 3M MAKES NO OTHER WARRANTIES OR CONDITIONS, EXPRESS OR IMPLIED, INCLUDING, BUT NOT LIMITED TO, ANY WARRANTY OR CONDITION OF MERCHANTABILITY, FITNESS FOR A PARTICULAR PURPOSE, OR ARISING OUT OF A COURSE OF DEALING, CUSTOM, OR USAGE OF TRADE. If a 3M product does not conform to this warranty, the sole and exclusive remedy is, at 3M's option, replacement of the 3M product or refund of the purchase price.

Limitation of Liability

Except for the limited remedy stated above, and except to the extent prohibited by law, 3M will not be liable for any loss or damage arising from or related to the 3M product, whether direct, indirect, special, incidental, or consequential (including, but not limited to, lost profits or business opportunity), regardless of the legal or equitable theory asserted, including, but not limited to, warranty, contract, negligence, or strict liability.

Commercial Branding and Transportation

3M Center, Building 223-3N-30
St. Paul, MN 55144

1-800-553-1380
3M.com/roadsafety

© 3M 2026. All rights reserved.
3M and Stamark are trademarks of 3M.
Used under license in Canada.
All other trademarks are property of their respective owners.
Revision B, April 2026 Please recycle.

