

# 3M™ Littmann® Special Edition Series



## Quality Instruments. Distinctive Finishes.



They're Music To Your Ears, And Eyes.

New finishes are now available for select Littmann® stethoscopes. These finishes coat the standard Littmann® stainless steel chestpiece and headset – providing a new look with the same Littmann quality. Choose from these finish/tube pairings:



**NEW**

### **Brass Finish/Black Tubing**

3M™ Littmann® Cardiology III  
3M™ Littmann® Classic II S.E.



### **Gold Finish/Black Tubing**

3M™ Littmann® Master Classic II



**NEW**

### **Copper Finish/Chocolate Tubing**

3M™ Littmann® Cardiology III  
3M™ Littmann® Classic II S.E.

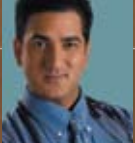


### **Black Finish/Black Tubing**

3M™ Littmann® Cardiology III  
3M™ Littmann® Master Cardiology™  
3M™ Littmann® Master Classic II  
3M™ Littmann® Classic II S.E.

To order, see your 3M Littmann authorized dealer. Or to learn more, visit [www.littmann.com](http://www.littmann.com)





# 3M™ Littmann® Special Edition Series

## Ordering Information

Description	Catalog #	Chestpiece & Eartube Finish	Flexible Tubing	Length
<b>3M™ Littmann® Master Cardiology™</b> <ul style="list-style-type: none"> <li>Offers a handcrafted stainless steel chestpiece with the portable convenience of a single-sided stethoscope.</li> <li>The tunable diaphragm conveniently alternates between low- and high-frequency sounds with a simple pressure change on the chestpiece.</li> <li>Recommended for cardiology and high performance adult and pediatric use.</li> <li>Dual-lumen tubing.</li> </ul>	2161	Black	Black	27 in. (69 cm)
<b>3M™ Littmann® Cardiology III</b> <ul style="list-style-type: none"> <li>Offers two tunable diaphragms which allows the user to conveniently alternate between low- and high-frequency sounds without turning over the chestpiece.</li> <li>The large side can be used for adult patients, while the small side is especially useful for pediatric or thin patients, around bandages, and for carotid assessment.</li> <li>Recommended for cardiology and high performance adult and pediatric use.</li> <li>Dual-lumen tubing.</li> </ul>	3128BRS 3137CPR 3131BE	Brass Copper Black	Black Chocolate Black	27 in. (69 cm)
<b>3M™ Littmann® Master Classic II</b> <ul style="list-style-type: none"> <li>Traditional bell combined with a tunable diaphragm that allows the user to conveniently alternate between low- and high-frequency sounds without turning over the chestpiece.</li> <li>Single-lumen tubing.</li> </ul>	2142G 2141	Gold Black	Black Black	27 in. (69 cm)
<b>3M™ Littmann® Classic II S.E</b> <ul style="list-style-type: none"> <li>Features a two-sided chestpiece that offers high acoustic sensitivity for superior performance.</li> <li>The tunable diaphragm on one side augments the traditional bell function of the opposite side.</li> <li>Single-lumen tubing.</li> </ul>	2201BRS 2820CPR 2218BE	Brass Copper Black	Black Chocolate Black	28 in. (71,1 cm)

To learn more about 3M™ Littmann® Stethoscopes, visit us on the web at [www.Littmann.com](http://www.Littmann.com).  
Or call the 3M Health Care Helpline at 1-800-228-3957.



**3M Health Care  
Littmann Brand Products**  
3M Center, Building 275-4W-02  
St. Paul, MN 55144-1000  
USA  
1-800 228 3957  
[www.3M.com/healthcare](http://www.3M.com/healthcare)  
[www.littmann.com](http://www.littmann.com)

**3M Health Care  
3M Canada**  
Post Office Box 5757  
London, Ontario N6A 4T1  
Canada  
1-800 364 3577

3M, Littmann and Master Cardiology  
are trademarks of 3M.  
Please recycle. Printed in U.S.A.  
© 3M 2009. All rights reserved.  
70-2010-7471-6