

3M Unitek

Transbond™ XT

Light Cure Orthodontic Adhesive
in Syringes or Capsules



3M

**3M Unitek
Orthodontic Products**

2724 South Peck Road
Monrovia, CA 91016 USA

European Representative:

3M Unitek GmbH

Ohmstrasse 3
86899 Landsberg, Germany
+49/(0)8191/ 9474-0

CE
0086 93/42/EEC

© 2008 3M. All rights reserved.

REF 011-519-10 0807

A. Tooth Preparation

B. Acid Etching

C. Priming Teeth

D. Adhesive Application from Capsules

E. Adhesive Application from Syringes

F. Placement and Curing

G. Storage and Use

Instructions For Use

English

Warning: Transbond™ XT primer and adhesive contains acrylate monomers. Acrylate monomers are known to produce allergic skin reactions in certain sensitive individuals. May cause eye and skin irritation.

Important: All resin-based primers that penetrate into the enamel rods may alter under certain conditions temporarily alter the appearance of the enamel. It does not discolor the enamel; rather it creates a contrast to the chalky appearance of the surrounding enamel.

Precautions: Avoid eye and skin contact. Wear gloves when handling this material.

First aid: Eye contact: Immediately flush with plenty of water. See a physician if irritation persists.

Skin contact: Wash affected area with soap and water. See a physician if irritation persists.

Precaution: Please follow manufacturer's directions on the handling, proper use and recommendations for eye protection, when using a curing light.

Precaution: Care must be taken when bonding to porcelain crowns or facings as debonding may cause chipping, delamination or breakage of the crown.

Do not bond to porcelain crowns that have thin facings or that appear to be compromised. Prepare the porcelain crown to be bonded by using a porcelain primer such as 3M™ ESPE™ RelyX™ Ceramic Primer. Follow instructions included with the porcelain primer.

Indications For Use: Transbond XT adhesive is not indicated for use with plastic (polycarbonate) brackets. Transbond XT Light Cure Orthodontic Adhesive is designed for bonding ceramic and metal orthodontic brackets.

A. Tooth Preparation

1. Prophyl teeth with an oil-free pumice or paste. Rinse with water. (Figure 1)
2. Isolate teeth.
3. Air dry thoroughly using oil and moisture-free air source. (Figure 2)



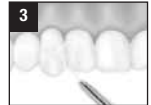
B. Acid Etching

1. If using Transbond™ Plus Self Etching Primer, proceed to Option 3: Priming Surfaces with Transbond Plus Self Etching Primer steps below. Otherwise, continue with acid etching.
2. Apply Transbond™ XT Etching Gel (REF 712-039) to tooth surfaces following the instructions provided with the etching gel delivery system. If using other gel etching systems, consult the manufacturer's instructions for proper technique and recommended etching times.
3. Rinse with water.

C. Priming

Option 1: Priming Surfaces with Transbond XT Primer

1. Air dry tooth thoroughly. Figure 3.
2. Place small amount of Transbond XT primer in well. Figure 4.
3. Apply thin uniform coat of primer on each tooth surface to be bonded. Figure 5.



Note: Since Transbond XT primer acts as a wetting agent, only a very thin film of primer is necessary.

Option 2: Priming Surfaces with Transbond™ MIP Moisture Insensitive Primer

For detailed instructions on Transbond™ MIP Moisture Insensitive Primer, please refer to Instructions For Use REF 011-563.

Option 3: Priming Surfaces with Transbond™ Plus Self Etching Primer

For detailed instructions on Transbond Plus Self Etching Primer, please refer to REF 011-581.

D. Adhesive Bonding with Capsules

1. To insert capsule into dispenser, open dispenser handle as wide as possible. Pull plunger toward opened handle. Place capsule tip into the barrel slot. (Figure 6)
2. Seat the capsule in the barrel by pushing the capsule forward (away from the handle) as far as possible (Figure 7). Push plunger towards capsule. Close handle until plunger contacts capsule. Remove the cap from the capsule.



3. Dispense a small amount of Transbond XT adhesive paste onto bracket base using a slow, steady pressure (Figure 8). When completed wipe capsule tip clean and replace cap.



4. To remove the used capsule, open the dispenser handle as wide as possible. Pull plunger away from capsule. Push the capsule toward the plunger. (Figure 9). Turn dispenser upside down to drop capsule into hand.



E. Adhesive Bonding with Syringes

1. With the syringe apply a small amount of Transbond XT adhesive paste onto bracket base. Use sparingly. **When completed wipe syringe tip clean and replace cap.**

F. Placement and Curing

1. Immediately after applying adhesive, lightly place bracket onto tooth surface.
2. Adjust bracket to final position, press firmly to seat bracket.
3. Gently remove excess adhesive from around the bracket base without disturbing the bracket. Figure 10.



Note: If final positioning will be delayed, cover patient's mouth with a dark colored mask or other article to avoid premature curing by ambient light.

4. Hold the curing light stationary at a distance of 2-3 mm above interproximal contact for metal appliances and perpendicular to ceramic appliance surface.

Refer to charts 1 and 2 to determine the curing conditions for optimal bond strength. If your curing light does not appear on this chart, please refer to your light manufacturer's instructions for curing conditions.

A technique tip for faster light curing of metal brackets is to position the curing light guide interproximal to two brackets. Figure 11. However, in order for the bracket to **fully cure, both sides of the bracket must be cured.**



Precaution: Please follow manufacturer's directions for the handling, proper use and eye protection recommendations when using a curing light.

G. Storage and Use

1. Do not expose materials to elevated temperatures or intense light. Bring to room temperature prior to use.
2. Do not store material in proximity to eugenol-containing products as this may inhibit the proper adhesive curing.
3. This system is designed to be used at room temperature (20-25°C, 68-77°F). Storage between 2-27°C/35-80°F
Light Sensitive
4. Shelf life at room temperature is per the expiration date on the kit box. Rotate inventory to optimize shelf life.

Contents of Transbond XT Syringe Kit (REF 712-035)

Item Description

- 2 Adhesive Paste Syringes (4gm each)
 - 1 Brush Holder
 - 1 Light Cure Orthodontic Adhesive Primer (6ml) (REF 712-032)
- 60 Brush Inserts

Contents of Transbond XT Capsule Kit (REF 712-030)

Item Description

- 25 Adhesive Paste Capsules (0.2gm each) (REF 712-031)
- 1 Light Cure Orthodontic Adhesive Primer (6ml) (REF 712-032)
- 1 Dispensing Gun (REF 712-032)

Chart 1

Appliance with Transbond™ PLUS Color Change Adhesive	Ortholux™ LED Curing Light (App. 1000 mW/cm ²) (LED)
Metal Brackets	5 seconds mesial + 5 seconds distal
Ceramic Brackets	5 seconds through the bracket 10 seconds mesial
Bondable Buccal Tubes	+ 10 seconds occlusal

Chart 2

Plasma Arc (App. 2000 mW/cm ²)	Ortholux™ XT Curing Light (App. 600 mW/cm ²) (Halogen)
3 seconds mesial + 3 seconds distal	10 seconds mesial + 10 seconds distal
3 seconds through the bracket	10 seconds through the bracket
6 seconds mesial + 6 seconds occlusal	20 seconds mesial + 20 seconds occlusal