

Powertrain Solutions

How can 3M help you?

Contact 3M Automotive Division to see how we can help your business.

Our team of specialists are on hand to help solve your business issues and application requirements.

Interior

Exterior

Paintshop

Body in White

Powertrain

New Technology

Introduction

With our products for engine, transmission and chassis we offer you solutions in the areas of:

- Exhaust systems
- Fuel systems
- Innovative powertrain technology

3M offers dependable high-tech solutions for mounting ceramic monoliths for traditional and innovative exhaust systems. 3M mat mounts handle temperature fluctuations over 1,000°C, compensate for the extreme differences in the expansion of metal and ceramics, and protect the sensitive monoliths from jolts and vibrations over the entire service life of the vehicle.

The entire Interam™ product line includes expanding mat mounts, pure fibre mats and hybrid versions for use in catalytic converters and diesel filters. Our laboratories and broad range of test equipment ensure that we are able to offer advanced technical support, including in-house, customer-specific test rigs that enable us to evaluate products and systems even under extreme conditions.

More rigorous legal regulations and consumer sensitivity challenge the automotive industry to develop environmentally compatible exhaust systems. Non-classified fibres in 3M Mat Mounts are categorized as unobjectionable on health grounds, due to their biosolubility, or due to their controlled fibre thickness.

Tel. 01344 857 867

www.3M-automotive.com

High-Performance Suspension

- **3M™ Interam™ Mat Mount - Petrol Applications** - with balanced pressure behaviour and high erosion resistance, petrol solutions from 3M are designed to work over a broad temperature range. The Interam™ 570NC expanding mat mount is the non-classified alternative to the Interam™ 100 mat. The fibres remain high-performance and are biosoluble at maximum temperatures. The new development, 600NC, generates lower expansion pressure and is highly resistant to erosion. With these characteristics it is also suitable for thin-walled substrates and it represents a cost-effective alternative to polycrystalline products.



- **3M™ Interam™ Mat Mount - Diesel Applications** - Interam™ 2500NC ensures high holding forces over a broad temperature spectrum when mounting diesel particulate filters. Interam™ 600NC, which is less expensive than polycrystalline mats, is suitable in all temperature ranges with uniform pressure formation and the highest performance capacity. It is well suited for diesel particulate filters, as well as for diesel oxidation catalytic converters.



- **3M™ Interam™ Mat Mounts - Truck Applications** - Interam™ 1200NC is the non-classified solution developed specifically for the mounting of truck applications.



3M Automotive

Driven by Innovation. Worldwide

3M

- **Hybrid Solutions - 2000 LT, Edge Seal** - hybrid solutions with an interplay of different types of mounts increase the total performance of a mounting system and are usually more economical than polycrystalline solutions. Edge Seal is the ideal solution when pure intumescent mats or pure polycrystalline mats are pushed to their limits through hot gases, vibrations or thermal shock.



- **Polycrystalline Solutions - 1600 HTE** - heat, vibration, pulsation – applications near the engine place particular demands on the support mat mount, and require a special construction. With moderate pressure curves Interam™ 1600 HTE is outstanding for protective mounting of sensitive ultra-thin substrates.



Fastening and Abrading

- **Scotch-Grip Thread Sealant** - screws and threads that are pre-coated with microencapsulated fastener systems and thread sealants provide additional stability and are particularly suitable for engine and gear system construction. The adhesive is only activated when the capsule breaks as the bolt is screwed in, and it cures at room temperature. Scotch-Grip fastening systems are temperature-resistant up to 200°C, and resistant to fuels, brake fluid, as well as transmission fluid and motor oil.

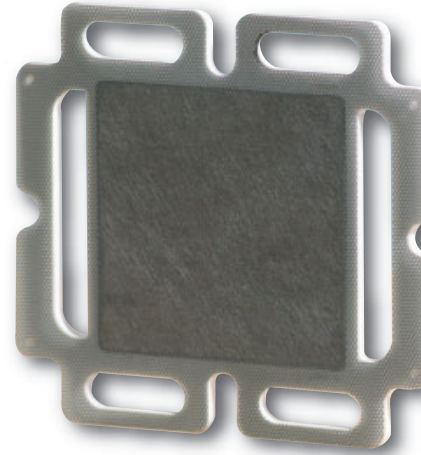


- **Microfinishing Abrasives** - the finish of crankshafts and camshafts must be equal to the highest stresses. Microfinishing film products offer high abrasive performance and are resistant to oils, water and emulsions.



New Technology

- **Membrane Electrode Assembly** - the major vehicle manufacturers are working on a powertrain with fuel cells. The Membrane Electrode Assembly (MEA) is the heart of the fuel cell. 3M supplies the crucial key technologies for all components of the MEA.



- **Aluminium Matrix Composites** - 3M has combined the light-weight characteristics of aluminium with the strength and the power capacity of continuous metal oxide fibres of the composite material class.

The result is a higher performance aluminium matrix composite material that has the same strength and rigidity of steel or cast iron, but only half of the weight.



3M Automotive

Driven by Innovation. Worldwide

Tel. 01344 857 867
www.3M-automotive.com