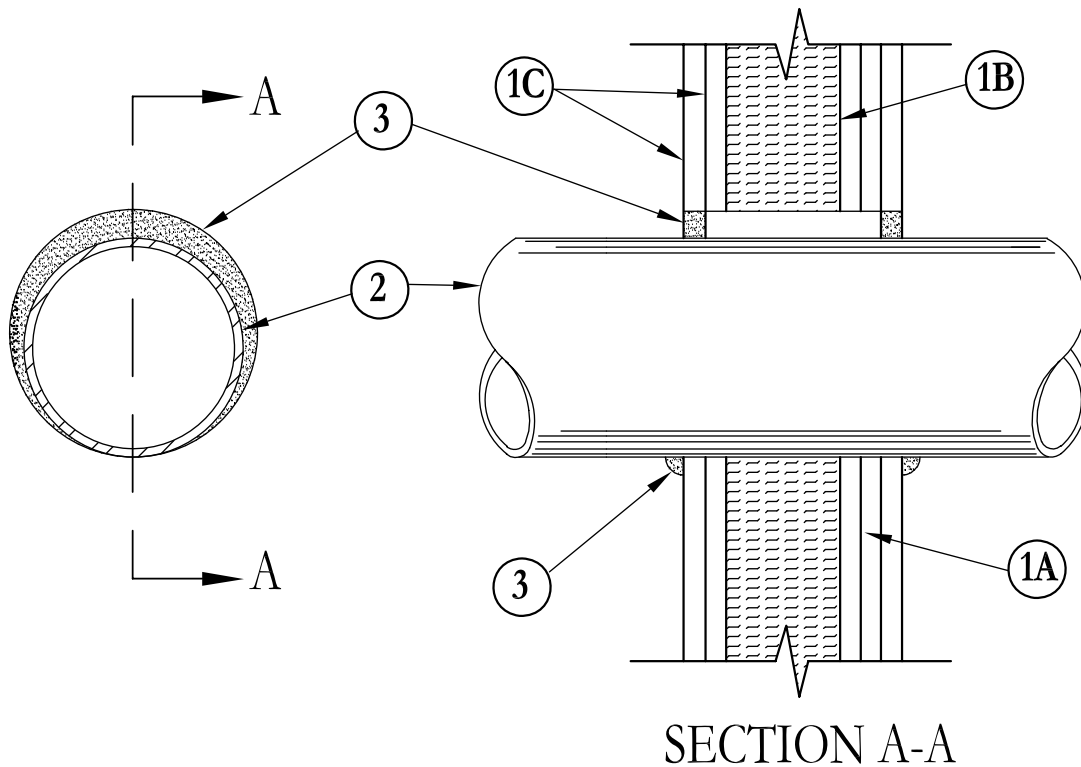


System No. W-L-1202

September 03, 2004

F Rating – 4 Hr

T Rating – 1/4 Hr



SECTION A-A

- Wall Assembly** - The 4 hr fire rated gypsum board/stud wall assembly shall be constructed of the materials and in the manner specified in the individual U400 Series Wall and Partition Designs in the UL Fire Resistance Directory and shall include the following construction features:
 - Studs** – Wall framing consist of min 20 gauge steel channel studs. Steel studs to be min 3-5/8 in. wide and spaced max 24 in. OC. When opening size exceeds width of stud cavity additional framing members shall be installed between the vertical studs and screw attached at each end.
 - Batts and Blankets** – Min 3 in. thickness of min 4 pcf mineral wool batt insulation to be placed in the stud cavity.
 - Gypsum* Board** – Two layers of nom 3/4 in. thick gypsum board, as specified in the individual Wall and Partition Design. Max size of opening is 25 in.
- Through Penetrants** – One metallic pipe, conduit or tubing installed either concentrically or eccentrically within the firestop system. The annular space between pipe, conduit or tubing and periphery of opening shall be min of 0 in. (point contact) to max 1 in. Pipe, conduit or tubing to be rigidly supported on both sides of wall assembly. The following types and sizes of metallic pipes, conduits or tubing may be used:
 - Conduit** – Nom 6 in. diam (or smaller) steel conduit or nom 4 in. diam (or smaller) steel electrical metallic tubing.
 - Copper Tubing** – Nom 6 in. diam (or smaller) Type L (or heavier) copper tubing.
 - Copper Pipe** – Nom 6 in. diam (or smaller) Regular (or heavier) copper pipe.
 - Steel Pipe** – Nom 24 in. diam (or smaller) Schedule 10 (or heavier) steel pipe.
 - Iron Pipe** – Nom 24 in. diam (or smaller) service weight (or heavier) cast iron soil pipe, nom 24 in. diam (or smaller) or Class 50 (or heavier) ductile iron pressure pipe.
- Fill, Void or Cavity Materials* – Caulk or Sealant**– Min thickness of 3/4 in. of fill material applied within annulus, flush with both surfaces of wall assembly. Min 1/2 in. diam bead of caulk applied to the penetrant/wallboard interface at point contact location on both surfaces of wall assembly.

3M COMPANY – CP 25WB+ caulk or FB-3000 WT sealant.

*Bearing the UL Classification Marking

This material was extracted and drawn by 3M Fire Protection Products from the 2006 edition of the UL Fire Resistance Directory.