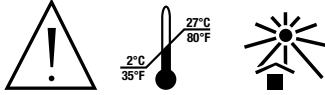


Transbond™ MIP Moisture Insensitive Primer

Instructions For Use



Warning

Acrylate monomers are known to produce allergic skin reactions in certain sensitive individuals. May cause eye and skin irritation.

Important: All resin-based primers that penetrate into the enamel rods may under certain conditions temporarily alter the appearance of the enamel. It does not discolor the enamel; rather it creates a contrast to the chalky appearance of the surrounding enamel.

Precaution: Avoid eye and skin contact. Wear gloves when handling this material.

First Aid

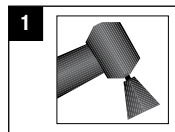
Eye contact: Immediately flush with plenty of water. See a physician if irritation persists.

Skin contact: Wash affected area with soap and water. See a physician if irritation persists.

Note: *Transbond™ MIP Moisture Insensitive Primer has been formulated to work in both a moist and dry environment. If bonding is delayed and moisture contamination occurs after the application of primer onto the tooth surface, apply a fresh coat of primer over the contaminated area, agitate (rub) for 3 seconds on the tooth surface, deliver a gentle air burst for 1-2 seconds and bond immediately.*

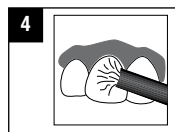
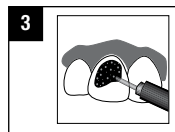
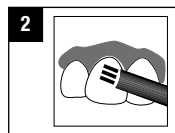
Tooth Preparation

1. Prophyl teeth with an oil-free pumice or paste. (Figure 1). Rinse with water. Isolate teeth.
2. Air dry thoroughly using oil and moisture-free air source. (Figure 2).



Acid Etching

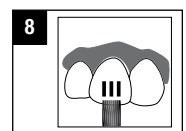
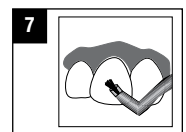
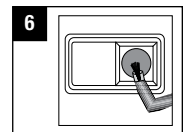
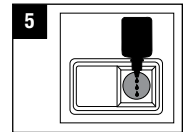
3. Apply Transbond™ XT Etching Gel (REF 712-039) to teeth surfaces following the instructions with the etching system. (Figure 3). If using other etching systems, consult the manufacturer's instructions for proper technique and recommended etching times.
4. Rinse thoroughly with water to ensure total removal of etchant. (Figure 4). Remove excess water, but drying of tooth surface is not necessary.



Priming Surfaces with Transbond MIP

Note: For best results, closely follow priming instructions.

5. Dispense three drops of Transbond MIP moisture insensitive primer (REF 712-021) in primer well. (Figure 5). Tightly cap primer bottle to prevent evaporation.
6. Dip and completely saturate the brush tip. (Figure 6). **Apply one liberal coat**, covering entire etched surface of tooth. (Figure 7). Avoid touching the gingival area.
7. Re-dip brush in primer for **each tooth** to be primed. (Figure 6).
8. Gently **blow air on each tooth for 2-5 seconds**, aiming the air stream perpendicular to the labial surface of the tooth. (Figure 8).



Adhesive Bonding

Follow APC™ Adhesive Coated Appliance, Transbond™ XT or LR Light Cure Adhesive, Concise™ Orthodontic Bonding Adhesive or Unitek™ Adhesive instructions for appropriate bonding procedures.

Storage and Use

1. Do not expose materials to elevated temperatures or intense light. Bring to room temperature prior to use.
2. Do not store material in proximity to eugenol-containing products as this may inhibit the proper adhesive curing.
3. This system is designed to be used at room temperature (20°- 25°C, 68°-77°F). Storage between 2°-27°C/35°-80°F Light Sensitive
4. Shelf life at room temperature is per the expiration date on the package label. Rotate inventory to optimize shelf life.

3M

3M Unitek
Orthodontic Products
2724 South Peck Road
Monrovia, CA 91016 USA

© 2004, 2009 3M.
All rights reserved.
REF 011-563-5 0905

CE
0086

European Representative:

3M Unitek
Ohmstrasse 3
86899 Landsberg, Germany
+49/(0)8191/ 9474-0