

SmartClip™ Self-Ligating Appliance System

INSTRUCTIONAL GUIDE



SMARTCLIP™
SELF-LIGATING APPLIANCE SYSTEM



WIRE ENGAGEMENT AND INSERTION TECHNIQUE

WIRE POSITIONING

LIGHT ARCHWIRES

LARGER ARCHWIRES

INSERTION/REMOVAL

LIGHT ROUND WIRES

LARGE RECTANGULAR WIRES

BRACKET HANDLING

3M Unitek

Products that make your life easier.

SmartClip™ Self-Ligating Appliance System

Bracket Features

- Passive design for efficient tooth movement
- Twin bracket design lets you use current treatment techniques
- Active capability per-tooth and on demand
- Reduced friction and light forces permit increased patient comfort
- Easy wire engagement and disengagement
- Familiar bracket design permits easy transition to self-ligation
- Self-Ligating brackets can mean reduced chair time
- APC™ Adhesive for bonding efficiency
- MBT™ System Prescription for treatment efficiency and predictability



SMARTCLIP™
SELF-LIGATING APPLIANCE SYSTEM

WIRE ENGAGEMENT AND INSERTION TECHNIQUE



Insert wire perpendicular to the base of the slot. This may require torquing of the wire.



If the wire does not enter the clip correctly, it can create a positive stop (black arrows) and resist easy wire insertion.



Proper alignment to the slot will also assist in wire engagement.

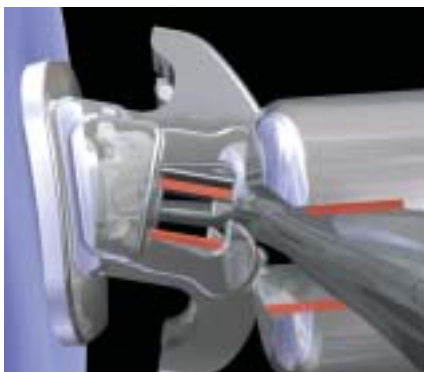
Graphic representations for illustration purposes only.



WIRE POSITIONING

LIGHT ARCHWIRES

IMPROPER POSITION



TOOL ANGLE ROUND WIRE

When positioning the wire for engagement, it is important to take into consideration the torque built into each bracket.

Do not use perpendicular force with the engagement tool when inserting the wire. This may cause the wire to bind on the bracket. For easy engagement, position the wire and engagement tool at an angle of approach equal to the torque built into the appliance. Then gently apply pressure.

PROPER POSITION

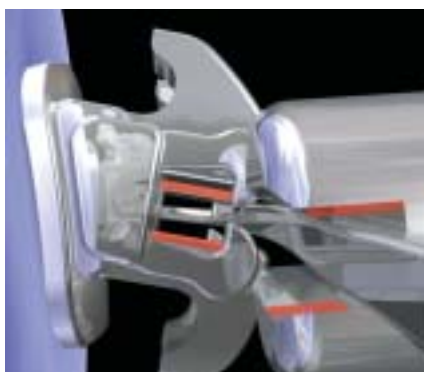




WIRE POSITIONING

LARGER ARCHWIRES

IMPROPER POSITION

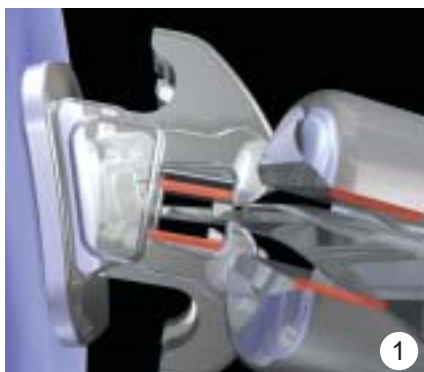


TOOL ANGLE RECTANGULAR WIRE

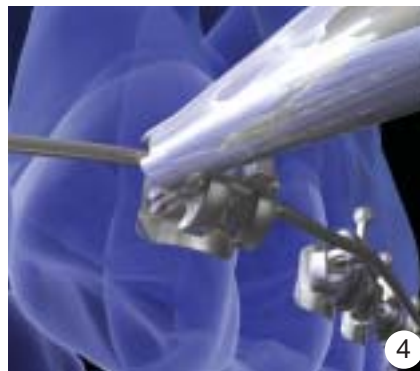
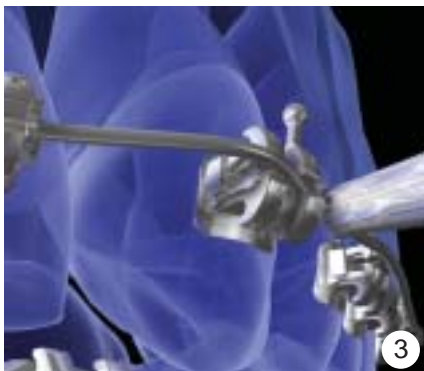
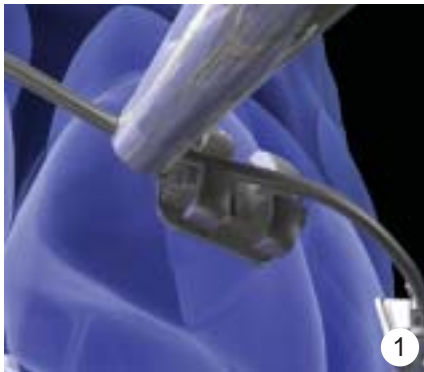
When positioning the wire for engagement, it is important to take into consideration the torque built into each bracket.

Do not use perpendicular force with the engagement tool when inserting the wire. This may cause the wire to bind on the bracket. For easy engagement, position the wire and engagement tool at an angle of approach equal to the torque built into the appliance. Then gently apply pressure.

PROPER POSITION



LIGHT ROUND WIRES INSERTION



ENGAGEMENT

Begin by inserting the lighter archwire into buccal tubes. Engage the remaining brackets by beginning with the centrals and then moving from anterior to the posterior on the patient's left and then on the patient's right.

Using the engagement end of the SmartClip™ Appliance System Hand Instrument, engage the central mesial clip first, followed by the distal clip. Proceed in similar fashion from lateral to cuspids on patient's left and then patient's right as shown. This allows for precise interproximal engagement of the archwire, minimizes the effect of archwire flex, and — applying lingual support with your gloved finger during engagement — will provide maximum comfort for the patient.

LIGHT ROUND WIRES REMOVAL

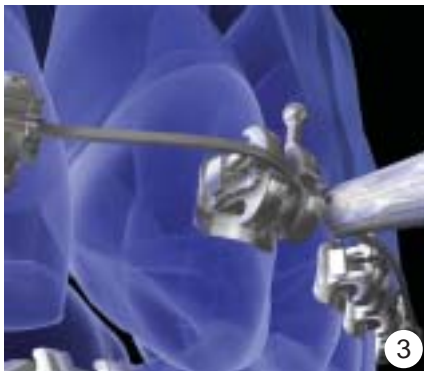


DISENGAGEMENT

Use the disengagement end of the SmartClip™ Appliance System Hand Instrument when disengaging all uppers and lower cuspids and molars. For the four lower anteriors, use the SmartClip™ Appliance System Narrow Hand Instrument. This instrument has a slightly smaller width specially designed for use in this area.



LARGE RECTANGULAR WIRES INSERTION



ENGAGEMENT

Begin by inserting the larger finishing, rectangular and square archwires into buccal tubes. Engage the remaining brackets by beginning with the centrals and then moving from anterior to the posterior on the patient's left and then on the patient's right.

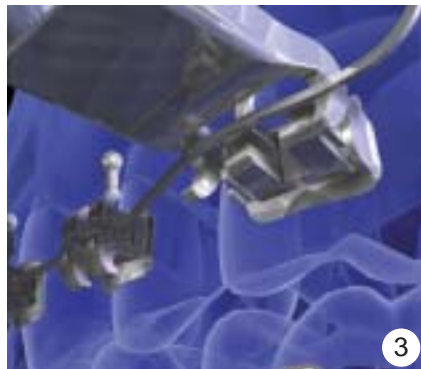
Using the engagement end of the SmartClip™ Appliance System Hand Instrument, engage the central mesial clip first followed by the distal clip. Proceed in similar fashion from lateral to cuspids on patient's left and then patient's right as shown. This allows for precise interproximal engagement of the archwire, minimizes the effect of archwire flex, and — applying lingual support with your gloved finger during engagement — will provide maximum comfort for the patient.

LARGE RECTANGULAR WIRES REMOVAL

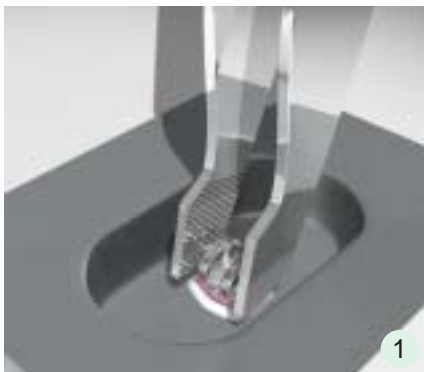


DISENGAGEMENT

Use the disengagement end of the SmartClip™ Appliance System Hand Instrument when disengaging archwires. Hang the hooks of the hand instrument over the archwire from the gingival side.



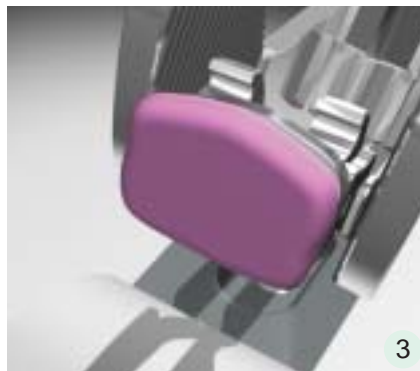
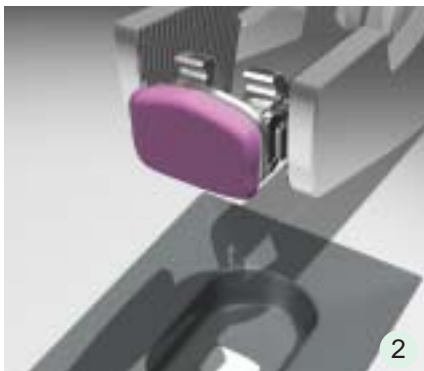
BRACKET HANDLING



BRACKET HANDLING

When removing SmartClip™ System Brackets from the APC™ System blister, it's best if a reverse style tweezer is used, as shown. Grab the bracket as you would any twin bracket – from the mesial and distal sides of the bracket. Since the clip retention posts are positioned at the base of the bracket, you should grab the bracket just above the clip retention posts. This will allow for a more precise fit of the instrument and ensure a more accurate hold.

Bracket shown with APC™ PLUS Adhesive



SmartClip™ Self-Ligating Appliance System



SmartClip™ Bracket System Technology

The first truly self-ligating bracket, SmartClip brackets hold archwires in place without ligatures and each is programmed to release the wire when force exceeds a predetermined level. The result is less patient discomfort and more efficient treatment.



Exclusive SmartClip Molar Brackets

The SmartClip system includes, at your option, SmartClip molar brackets. As with all SmartClip brackets, SmartClip molar brackets permit easy archwire insertion. Distal anchorage bends can be made prior to insertion, thus reducing the opportunity for molar bond failures associated with intra-oral bending. In addition, when using the SmartClip mandibular molar bracket, occlusal interference is greatly reduced by eliminating occlusal tie-wings.



Improved Clean Up

The APC™ PLUS System Color Change Adhesive goes on pink for improved reference and more efficient flash clean up. Positioning is fast and accurate. Visible flash makes for better clean up, leaving less adhesive behind for plaque buildup, improved hygiene and reliable debonding. After exposure to light, the adhesive is colorless.



Moisture Tolerant...Fluoride Release

The APC PLUS System allows for some moisture uptake. And, if you choose to use Transbond™ Plus Self Etching Primer, you can etch and prime in one, simple step without compromising bond strength ...wet or dry. Fluoride release enhances doctor/patient confidence.



Single-Use Packaging and Convenient Dispensing System

Each adhesive coated bracket is sealed in a light-protective, tamper-evident blister. The blister contains Palmer Notation, torque and angulation, lot number and expiration date for easy identification and organization. The SmartClip Self-Ligating Appliance System also features 7x7 storage and dispensing capacity. A convenient patient setup tray lets you transfer exactly what you need to chair side.



MBT™ System Prescription

Providing you with the ability to manage case-by-case variability, improve patient comfort and convenience, and deliver predictable outcomes is the core of the MBT™ Versatile + Appliance System.



**3M Unitek
Orthodontic Products**

2724 South Peck Road
Monrovia, CA 91016 USA

www.3MUnitek.com

In U.S. and Puerto Rico: 1-800-423-4588 • 626-574-4000

In Canada: 1-800-443-1661

Technical Helpline: 1-800-265-1943 • 626-574-4577

CE Hotline: 1-800-852-1990 x 4649 • 626-574-4649

Outside these areas, contact your local representative.



*Printed on 50% recycled
waste paper, including 10%
post-consumer waste paper.*

© 2005 3M Company.
All rights reserved.
014-174 0512