

Table of Contents

Section 9 – Table of Contents

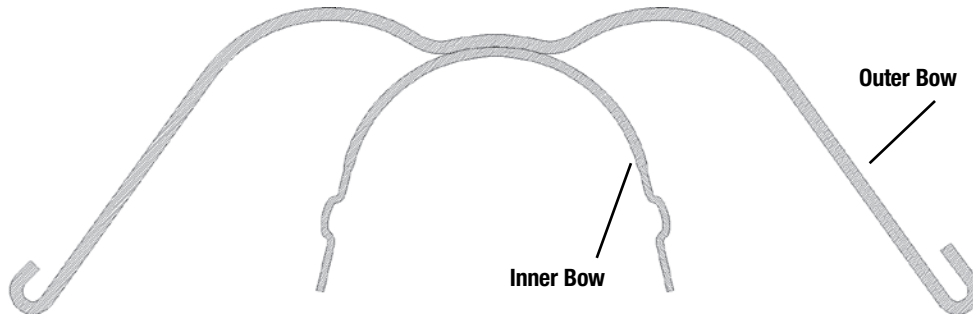
Series 5 Facebows.....	9.2
Level Anchorage Proportional Facebows.....	9.5
Friction-Stop Adjustable Facebows.....	9.5
Facebow Accessories	9.5
Traction Release Headgear	9.6
NWO™ Snap-Way™ System	9.8
Miscellaneous NWO™ Headgear.....	9.9

9

Extraoral Products

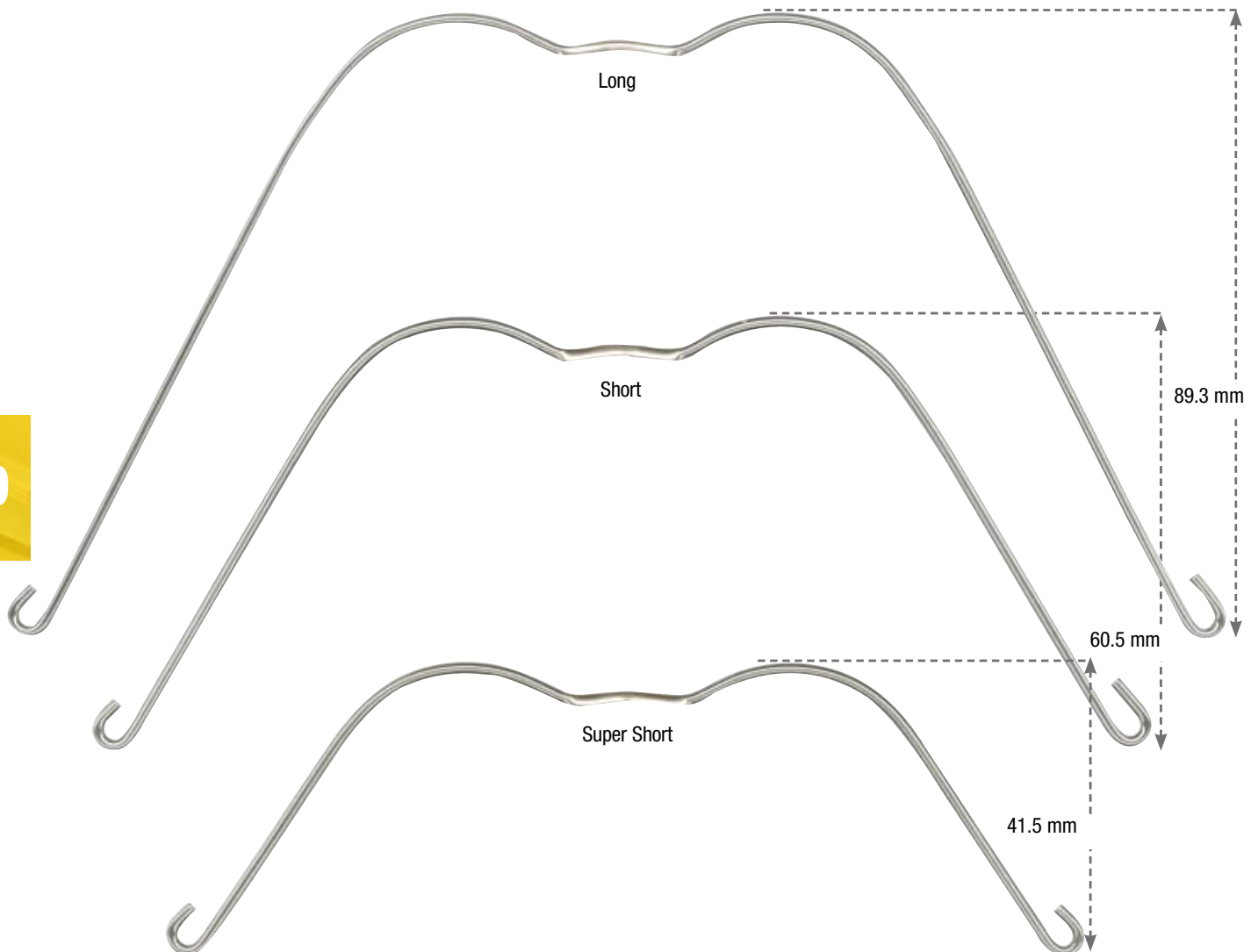
Series 5 Facebows

Typical Facebow Assembly



Outer Bows

- Right outer loop is larger for ease or orientation
- Outer loops are bent outward (standard) or upward (on request)
- Outer bow facially is contoured for increased strength

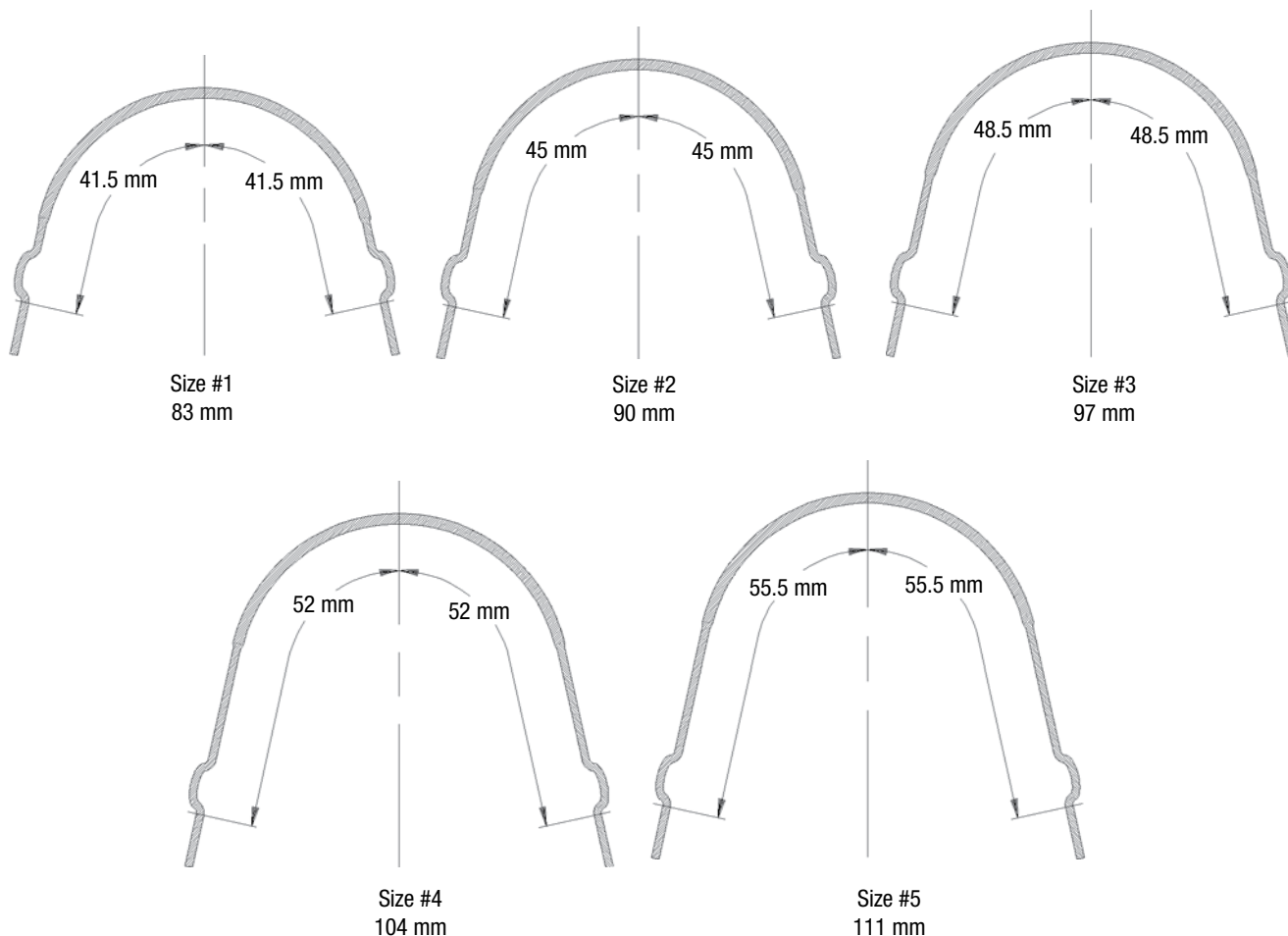


Extraoral Products

Series 5 Facebows

Inner Bows

- Inner arch length is measured from distal side of loop to distal side of opposite loop on the inside of the inner bow
- Inner arch has narrow radius so adjustments are outward
- Performed inner loops serve as adjustable stops as well as shock absorbers and are angulated for gingival clearance



Note: Unless otherwise specified, Series 5 facebows are shipped with adjustable loops bent occlusally. For loops bent gingivally, indicate “special” when ordering and specify “adjustable loops bent gingivally.”



**Series 5 Facebow
Sizing Guide**
Inner arch sizing guide
701-700

Extraoral Products

Series 5 Facebows

Inner Bow without Hooks, Outer Bow Non-Angulated

Diameter Inches	Inner Bow Size	Inner Bow (mm)	Outer Bow Long	Outer Bow Short	Outer Bow Super Short
.045	1	83	328-211	328-212	320-215
.045	2	90	328-221	328-222	320-225
.045	3	97	328-231	328-232	320-235
.045	4	104	328-241	328-242	320-245
.045	5	111	328-251	328-252	320-255
.051	1	83	-	328-312	-
.051	2	90	-	328-322	-
.051	3	97	-	328-332	-
.051	4	104	-	328-342	-
.051	5	111	-	328-352	-

Inner Bow without Hooks, Outer Bow 15° Angulation

Diameter Inches	Inner Bow Size	Inner Bow (mm)	Outer Bow Short	
			Occlusal Ang.	Gingival Ang.
.045	1	83	328-214	328-215
.045	2	90	328-224	328-225
.045	3	97	328-234	328-235
.045	4	104	328-244	328-245
.045	5	111	328-254	328-255

Inner Bow with Cuspid Hooks, Outer Bow Non-Angulated

Diameter Inches	Inner Bow Size	Inner Bow (mm)	Outer Bow Short
.045	1	83	329-212
.045	2	90	329-222
.045	3	97	329-232
.045	4	104	329-242
.045	5	111	329-252

Extraoral Products

Facebows

Facebow Accessories

Level Anchorage Proportional Facebows

Inner Bow without Hooks, Outer Bow Non-Angulated

Diameter Inches	Inner Bow Size	Inner Bow (mm)	Outer Bow Proportional
.045	1	90	325-410
.045	2	97	325-411
.045	3	104	325-412
.045	4	111	325-413



Friction-Stop Adjustable Facebows

Type of Facebow	Diameter (Inches)	Long	Short	Super Short	Ang. 15° Occlusal Short
Universal Inner Bow	.045	320-451	320-452	320-450	322-452
	.051	320-511	320-512	-	-
w/Cuspid Hooks	.045	-	321-452	-	-



Friction Fit Stops

- Used for facebow stops or spacers on inner bow
- Springy for easy fit
- Solder in place
- Inside diameter .045 in. (1.14 mm)

519-562 100/pk



Plain Carrying Case

- Transparent
- Interlocking zip seal
- 10/pk

706-001 Small

706-002 Large

Deluxe Carrying Case

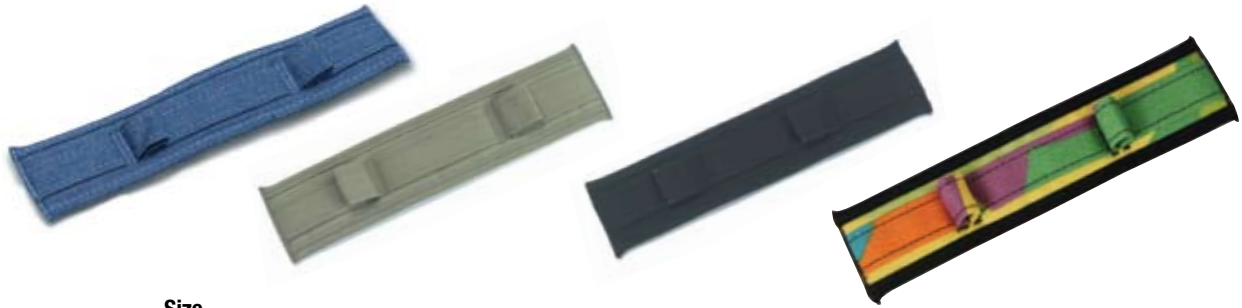
- Vinyl
 - Zipper with pull tab
- 706-003 Red, 10/pk
706-004 Blue, 10/pk

Extraoral Products

Traction Release™ Cervical Headgear

- Safety release reduces “sling-shot” hazard
- Clips automatically release when pulled with excessive force
- Easy reassembly
- Inner steel coil springs provide consistent traction force
- Color coded straps identify module force levels
- Washable 100% cotton pads and headstraps
- Cervical and high-pull systems
- Pads and modules sold separately

Traction Release™ Cervical Headgear Neckpads



Pads	Size		Denim Blue	Khaki	Black	Multi-Print	Package
	Inches	cm					
Small	6 1/4	15.3	414-069	414-072	414-075	414-078	10/Pk
Medium	6 3/4	17.2	414-070	414-073	414-076	414-079	10/Pk
Large	7 1/4	18.3	414-071	414-074	414-077	414-080	10/Pk
Medium	6 3/4	17.2	414-081	-	-	414-082	30/Pk

Bulk Pack

Traction Release™ Cervical Headgear Release Modules



Force	@ 50% Extension		Module Color	Part Number	Package
	oz.	gm			
Light	13	368	Tan	415-007	10/Pk (5 pair)
Medium	18	510	White	415-008	10/Pk (5 pair)
Heavy	26	737	Gray	415-009	10/Pk (5 pair)
Medium	18	510	White	415-064	60/Pk (30 pair)
C-Clip Replacements			415-061	60 clips	

Bulk Pack

Traction Release™ Cervical Headgear Kits



One Case Kit

		Cervical Pads						Release Modules		
		Blue			Multi-Print			Light	Medium	Heavy
		Sml	Med	Lrg	Sml	Med	Lrg			
1 Case Kit	415-051	-	1	-	-	-	-	2	-	
10 Case Medium Kit	415-050	1	3	1	1	3	1	20	-	
10 Case Assorted Kit	415-049	1	3	1	1	3	1	12	6	

Extraoral Products

Traction Release™ High-Pull Headgear

Traction Release™ High-Pull Headgear Headcaps



Caps	Denim Blue	Khaki	Black	Multi-Print
Small	415-035	415-037	415-039	415-041
Large	415-036	415-038	415-040	415-042
Small (15)/ Large (15)	415-067	-	-	415-068

Bulk Pack

Traction Release™ High-Pull Headgear Release Modules



Force	@50% Extension		Module Color	Part Number	Package Quantity
	oz.	gm			
Light	12	340	Tan	415-017	10/Pk (5 pair)
Medium	15	425	White	415-018	10/Pk (5 pair)
Heavy	23	652	Gray	415-019	10/Pk (5 pair)
Medium	15	425	White	415-069	60/Pk (30 pair)
C-Clip Replacements			415-072	60/Pk	

Bulk Pack

Traction Release™ High-Pull Headgear Kits



One Case Kit

		High-Pull Headcaps				Release Modules		
		Denim Blue		Multi-Print		Light	Medium	Heavy
		Sml	Lrg	Sml	Lrg			
1 Case Kit	415-060	-	1	-	-	2	-	
8 Case Medium Kit	415-059	2	2	2	2	16	-	
8 Case Assorted Kit	415-058	2	2	2	2	6	4	

Extraoral Products

NWO™ Snap-Way™ System

NWO™ Snap-Way™ System

- Designed to reduce the risk of injury should the facebow be accidentally or improperly removed
- Combines a travel limiter and a pre-set disconnect to provide the safest possible treatment
- All force modules feature precise calibrated force adjustment for controlled treatment
- Washable 100% cotton pads and headstraps for maximum patient comfort

NWO™ Snap-Way™ Cervical Headgear Neckpads

Inches	Size cm	Denim Blue	Multi-Print	Quantity
6	15.3	444-800	444-806	10/pk
7	18.0	444-801	444-807	10/pk

NWO™ Snap-Way™ Cervical Headgear Release Modules

oz.	Force gm	Part Number	Quantity
10 - 22	283 - 623	444-808	20/pk
16 - 32	453 - 907	444-809	20/pk



NWO™ Snap-Way™ Cervical Headgear 1 Case Kit

Inches	cm	Force oz.	gm	Denim Blue
7	15.3	16 - 32	453 - 907	444-818

NWO™ Snap-Way™ High-Pull Headgear Headcaps

Blue	Black	Multi Print	Quantity
444-814	444-816	444-817	1/pk

NWO™ Snap-Way™ High-Pull Headgear Release Modules

oz.	Force gm	Part Number	Quantity
10 - 22	283 - 623	444-822	2/pk
16 - 32	453 - 907	444-823	2/pk



Extraoral Products

Miscellaneous NWO™ Headgear

Accessories

Pre-Assembled Snap-Way™ Headcap (NW320 Series)

- “One size fits most” standard headcap is pre-assembled

One Each	Force		Blue	Black
	oz.	gm		
For Facebow	10-22	283-623	444-002	444-001
	16-32	453-907	444-008	444-007
For Chin cup*	10-22	283-623		
	16-32	453-907	444-218	

*Chin cup headcap releases at higher force level



Extra Comfort Pre-Assembled Snap-Way Headcap

- Nylon cap lined with foam
- Available in two sizes with a force range of 16-32 ounces with compact spring

One Each	Size	Blue
For Facebow	Small	444-014
	Large	444-020



Vertical Pull Headcap

- Quickly and easily “Custom” fit to the individual patient
- Replacement tabs available separately

One Each	Size	Blue
For Chin cup	Small	444-026
	Large	444-032



Chin Cups

- Felt lined for extra comfort
- Rigid plastic chin cup will not squeeze the patient’s chin or cheeks

Chin cup (white) with liner
444-828 1/pk

Chin cup liner
444-325 10/pk

* Liners use a latex base



Extraoral Products

Miscellaneous NWO™ Headgear

Accessories

Prescription Tab Variable Force Neckpads

- Removable cloth covered foam pad
- Gauges sold separately

Neckpads (10/pk)

Inches	cm	Blue
8	20	444-290



Force Gauge (10/pk)

Force oz.	Force gm	Part Number
8 - 28	227 - 793	444-174



Replacement Snap-Way™ Tabs

- Replacement tabs
- 7 lb. (3.2 kg)

444-320 10/pk



Replacement Snap-Way Tabs for Facebow and Head Caps

- Replacement tabs
- 5 lb. (2.3 kg)

444-319 10/pk



Calibrated J-Hook Headgear

Headcap (1/pk)

Size	Blue
Small	444-080
Medium	444-086
Large	444-092
X-Large	444-098



High-Pull Gauge (1/pk)

Force oz.	Force gm	Part Number
0-32	0-907	444-103

