

# Filtek™ Bulk Fill

Posterior Restorative



and done.

# Fast and easy



## Filtek™ Bulk Fill Posterior Restorative

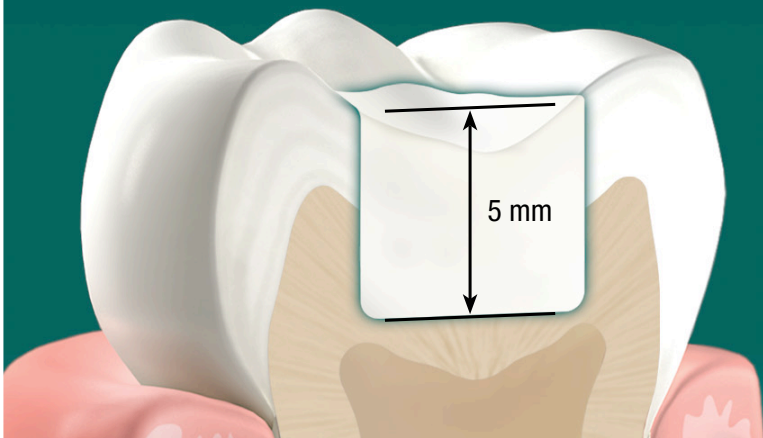
One increment up to 5 mm.  
No expensive dispensing devices  
or time-consuming layers.  
Posterior Restorations made simple.

There's no question that bulk fill materials save time, however, true simplification involves eliminating complicated expensive dispensing devices, additional layers and multiple steps, without compromising wear resistance or stress relief.

Filtek™ Bulk Fill Posterior Restorative is your one-step bulk placement solution designed to improve productivity by allowing fast and easy posterior restorations.

- ✓ One-step placement, no additional capping layer
- ✓ Fast and easy procedure
- ✓ Excellent adaptation without additional expensive dispensing devices
- ✓ Stress relief to enable up to 5 mm depth of cure
- ✓ Better in vitro wear resistance than market-leading bulk fill materials
- ✓ Excellent handling and sculptability
- ✓ TRUE nanofiller technology and two innovative methacrylate monomers act to lower polymerization stress without compromising wear

It's as simple as "one and done."



One Bulk Fill Placement  
up to 5 mm



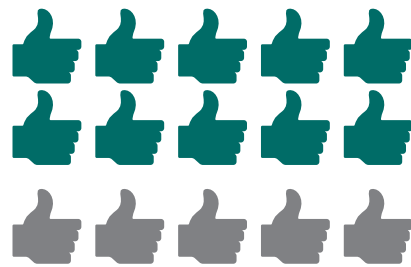
10 sec. light cure x 3  
(occlusal, buccal, lingual)

Dentists were asked to place and cure different restorations and rate the materials based on preference.

In a simulated operatory setting, we put Filtek Bulk Fill Posterior Restorative head-to-head against several restorative materials that require different placement techniques. The materials included an incrementally placed composite and a flowable bulk fill composite.

**Filtek Bulk Fill Posterior Restorative stands out over the competition.**

**24%**  
**faster**  
placement time  
vs incrementally  
placed composite

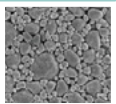


**2X**  
**number of**  
**dentists**  
prefer Filtek™ Bulk Fill  
Posterior Restorative

vs a bulk fill flowable based  
on placement technique

## TRUE nanofiller technology and innovative chemistry

5K magnification  
of nanocluster



50K magnification  
of nanocluster

Filtek Bulk Fill Posterior Restorative uses the same TRUE nanofiller technology that's been time-proven by other leading Filtek™ restorative products. Not only does this technology contribute to high strength, excellent handling and better wear resistance, but also to restorations that are fast and easy to polish.

In addition to this TRUE nanofiller technology, Filtek Bulk Fill Posterior Restorative also contains two innovative **methacrylate monomers** that, in combination, act to lower polymerization stress, without compromising wear.

The combination of these two technologies results in an easy-to-use, one-step placement, restorative material designed to simplify your posterior restorations.

Also from the brand you trust ...

# Filtek™ Bulk Fill Flowable Restorative

## An excellent low-stress liner/base solution.

If you're looking for a great, all-around, low-stress bulk fill flowable, this is it. Filtek™ Bulk Fill Flowable Restorative is up to 50% stronger than the leading bulk fill flowable<sup>1</sup>—and offers over 3X the wear resistance.<sup>1</sup> Excellent for use as<sup>2</sup>:

- ✓ a liner for Class I and Class II restorations
- ✓ a fast bulk fill base up to 4 mm for Class I and Class II restorations
- ✓ as a wear-resistant solution for small, non stress-bearing occlusal surfaces, Class III and Class V

1. Compared to SureFil SDR flow. 3M ESPE in vitro data on file.  
2. Refer to Instructions for Use for complete list of indications.



### Ordering Information

#### Filtek™ Bulk Fill Posterior Restorative

Item #	Product Information
4864TK	<b>Filtek™ Bulk Fill Posterior Restorative Capsule Procedure Kit</b> Kit includes: 40 – 0.2g capsules: 20 each of A2 and A3; 5.0ml vial Scotchbond™ Universal Adhesive; Instructions for Use; 10 – Sof-Lex™ Spiral Finishing Wheels; 10 – Sof-Lex™ Spiral Polishing Wheels; 1 – RA Mandrel; Technique Guide; Instructions for Use
4863TK	<b>Filtek™ Bulk Fill Posterior Restorative Syringe Procedure Kit</b> Kit includes: 2 – 4g syringes: 1 each of A2 and A3; 5.0ml vial Scotchbond™ Universal Adhesive; Instructions for Use; 10 – Sof-Lex™ Spiral Finishing Wheels; 10 – Sof-Lex™ Spiral Polishing Wheels; 1 – RA Mandrel; Technique Guide; Instructions for Use

Refill	Item #	Item #
SHADE	SYRINGE	CAPSULE
A1	4863A1	4864A1
A2	4863A2	4864A2
A3	4863A3	4864A3
B1	4863B1	4864B1
C2	4863C2	4864C2

**SYRINGE SHADE REFILLS** include 1 – 4g syringe; Technique Guide; Instructions for Use.

**CAPSULE SHADE REFILLS** include 20 – 0.2g capsules; Technique Guide; Instructions for Use.

#### Filtek™ Bulk Fill Flowable Restorative

Refill	Item #	Item #
SHADE	SYRINGE	CAPSULE
A1	4862A1	4861A1
A2	4862A2	4861A2
A3	4862A3	4861A3
Universal	4862U	4861U
Item #	Product Description	
3740T	<b>Dispensing Tips</b> 20 – 19-gauge dispensing tips	

**SYRINGE SHADE REFILLS** include 2 – 2g syringes; 20 dispensing tips; Technique Guide; Instructions for Use.

**CAPSULE SHADE REFILLS** include 15 – 0.2g capsules; Technique Guide; Instructions for Use.

Customer Care Center: 1-800-634-2249 [www.3MESPE.com/Filtek](http://www.3MESPE.com/Filtek)

★★★★★ Review these products at [www.3MESPE.com/review](http://www.3MESPE.com/review)



#### Dental Products

2510 Conway Avenue  
St. Paul, MN 55144-1000 USA  
1-800-634-2249

#### 3M Canada

Post Office Box 5757  
London, Ontario N6A 4T1  
Canada  
1-888-363-3685

Please recycle. Printed in U.S.A.  
70-2013-0641-5

3M, ESPE, Filtek, Scotchbond and Sof-Lex are trademarks of 3M or 3M Deutschland GmbH. Used under license in Canada. © 3M 2014. All rights reserved. All other trademarks are not trademarks of 3M.