

Clinpro™ Prophy Powder

Professional Protection



Protective
Tooth Cleaning

Safe Effective Plaque Removal

Clinpro™ Prophy Powder: for sub- and supragingival use

For safe, effective plaque removal

3M™ ESPE™ Clinpro™ Prophy Powder represents a unique innovation in air-polish technology and periodontal treatment. It is more comfortable than manual procedures and allows subgingival plaque to be removed safely. Due to its minimal abrasiveness it is also gentle to tooth enamel, dental restorative materials and the soft root surfaces, which prevents any loss of substance. In addition, Clinpro prophy powder removes pathogenic bacteria in the periodontal pockets more effectively than conventional plaque removal procedures.

Plaque on the sub- and supragingival tooth surfaces is mechanically removed with Clinpro prophy powder - either in routine professional tooth cleaning or in addition to subgingival scaling during initial periodontal treatment. Light to moderate extrinsic stains (for example from tobacco, red wine, etc) can also be safely removed with Clinpro prophy powder.



1. Healthy Periodontium

2. Gingivitis

3. Periodontitis

Clinpro™ prophy powder removes plaque even in deeper pockets.

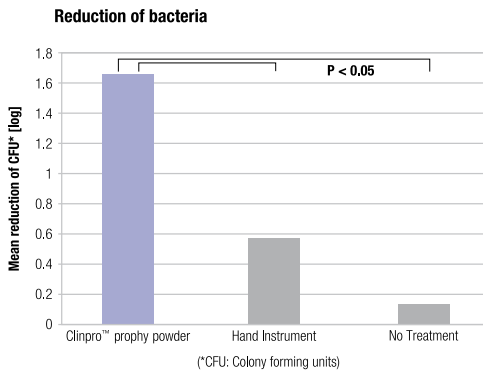
Clinpro prophy powder can also be used during supportive periodontal therapy. To keep the periodontal area healthy, professional tooth cleaning is, depending on dental health, recommended every three to six months. Unlike traditional powders Clinpro prophy powder cleans so gently that it can easily be used this frequently. For that reason, it is also an excellent choice for PTC in patients who wear braces.



Clinical results:

Reduction of bacteria

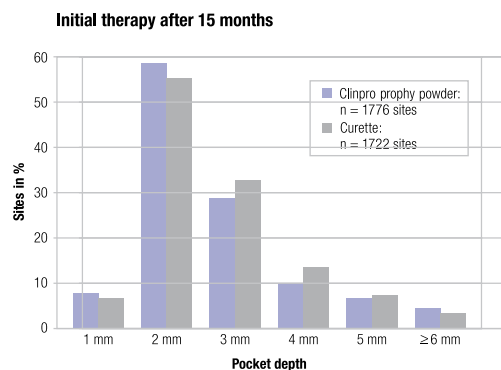
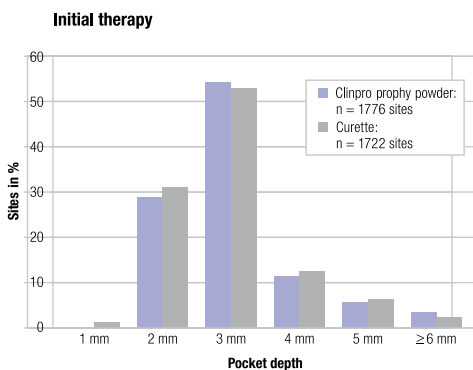
The air-polish process with 3M™ ESPE™ Clinpro™ Prophy Powder results in significantly better bacterial reduction than manual plaque removal.



Petersilka G., Tunkel J., Barakos K., Heinecke A., Häberlein I., Flemmig T.F.: Subgingival plaque removal at interdental sites using a low abrasive air-polishing powder, Journal of Periodontology, 2003, Volume 74, Number 3

Reduction of pocket depth

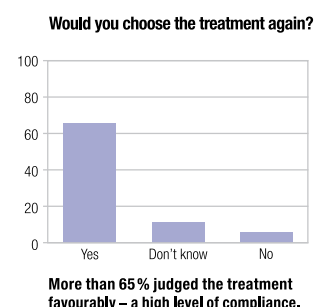
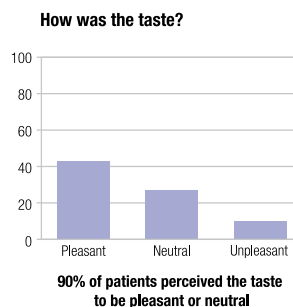
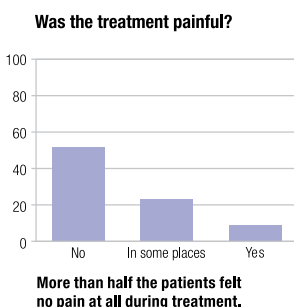
The decrease in pocket depth with Clinpro prophy powder is comparable to that of conventional treatment methods. And the Clinpro air-polish method has its advantages: it is faster, more pleasant for the patient and abrades the root surface less.



Petersilka G., Tunkel J., Barakos K., Heinecke A., Häberlein I., Flemmig T.F.: Subgingival plaque removal at interdental sites using a low abrasive air-polishing powder, Journal of Periodontology, 2003, Volume 74, Number 3

Patient comfort and satisfaction

An evaluation of the acceptance of Clinpro prophy powder in five dental practices with a total of 81 patients was convincing.



Less abrasion - more substance retention

For protective tooth cleaning

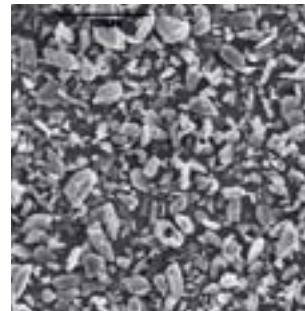
Compared to conventional sodium/calcium bicarbonate powder, 3M™ ESPE™ Clinpro™ Propphy Powder has been shown to abrade enamel and dentine surfaces significantly less. Plaque is safely removed without loss of substance, even from root surfaces. Because of this low level of abrasiveness, Clinpro propphy powder can be used more than twice a year - which is contraindicated with other air-polishing powders.

Conventional	Low-abrasive (Clinpro propphy powder)
Subgingival usage: ---	Subgingival usage: +++
Plaque removal: +++	Plaque removal: +++
Stain removal: +++	Stain removal: ++
Use on enamel: ++	Use on enamel: +++
Use on dentine: ---	Use on dentine: +++
Use on root surface: ---	Use on root surface: +++



Conventional air-polishing powders

- up to 200 µm particle size
- should only be applied once, maximally twice, per year due to abrasivity



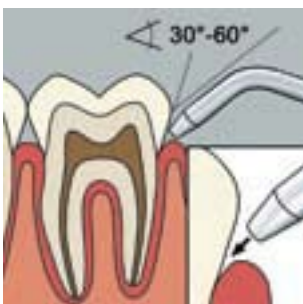
Clinpro propphy powder

- mean particle size < 45 µm
- can be applied as many times per year as needed

How to use Clinpro propphy powder

Comfortable, safe, fast - and tastes good as well

Plaque removal with Clinpro propphy powder is not only more effective than manual procedures, it's also faster. Patients also appreciate the exceptionally pleasant taste. The figures show the process in detail: compared to traditional cleaning with a curette, it only requires a quarter of the time to achieve better results with greater comfort. Additionally, Clinpro propphy powder is ideal for cleaning tooth surfaces fast and effectively, even in the vicinity of orthodontic appliances.



Positioning of the nozzle 5 mm from the gingiva at 30° to 60°.



Before and after air-polish with Clinpro propphy powder. This method is four times faster than the conventional method using curettes and is easier as well.

Benefits for the dentist and dental hygienist

3M™ ESPE™ Clinpro™ Prophy Powder makes professional tooth cleaning much faster, easier and effective.

- Can be used for removal of sub- and supragingival plaque and stains during routine professional tooth cleaning, initial periodontal treatments and in periodontal maintenance
- Less damaging to enamel and dentine tooth surfaces than conventional sodium/calcium bicarbonate powders
- Very low abrasivity, and can therefore be used more than twice a year (other air-polishing powders are contra-indicated)
- More efficient at lowering bacterial loads in periodontal pockets than conventional instruments
- Four times faster than conventional instruments
- Less technically demanding than conventional curettes (better ergonomics)
- Reputation for providing patients with innovative, improved treatments
- Improved patient compliance for recall visits

Benefits for the patient

With Clinpro prophy powder, plaque removal ceases to be a necessary evil, now it's a comfortable and pleasant-tasting procedure.

- Safely removes plaque from (root) surfaces without causing clinically relevant loss of (root) substance
- Can be used safely with orthodontic appliances without damaging them
- Quick treatment
- Four times faster than conventional instruments
- More efficient at lowering bacterial loads in periodontal pockets than conventional instruments
- Less painful and thus better accepted by patients
- Pleasant tasting - does not leave a salty, gritty taste in the patient's mouth
- More comfortable and gentle than the conventional method using curettes

Ordering Information



Clinpro™ Propfy Powder

Item No.	Product Information
67001	Clinpro™ Propfy Powder 4 Bottles of 100 g each

3M ESPE

3M ESPE Dental Products
Morley Street
Loughborough
Leicestershire
LE11 1EP
Tel: 0845 602 5094
Email: 3MESPEUK@mmm.com
Website: www.3MESPE.co.uk

3M Ireland
3M House
Adelphi Centre
Upper George's Street
Dun Laoghaire
Co. Dublin
Ireland

3M, ESPE and Clinpro are trademarks of the 3M Company or ESPE AG
© 3M Health Care 2008

GD261