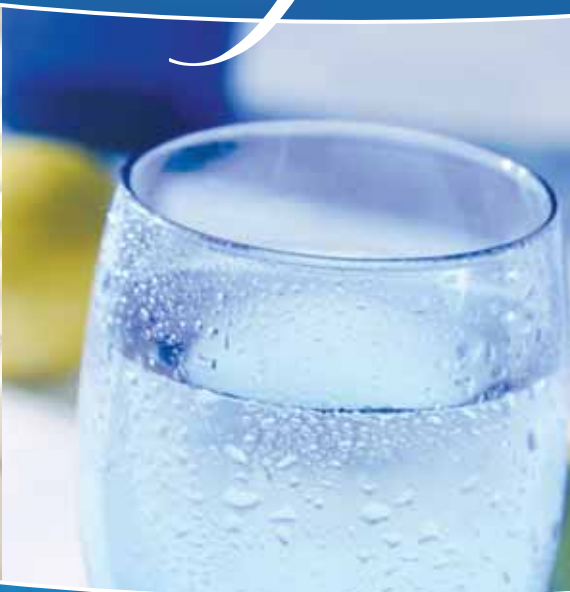


FOR CLEARLY *Great* WATER™



*Aqua-Pure*®



Aqua-Pure Drinking Water Products



Aqua-Pure Filtration Products

# CHOOSE AQUA-PURE® PRODUCTS



Aqua-Pure Housings



Aqua-Pure Treatment Products



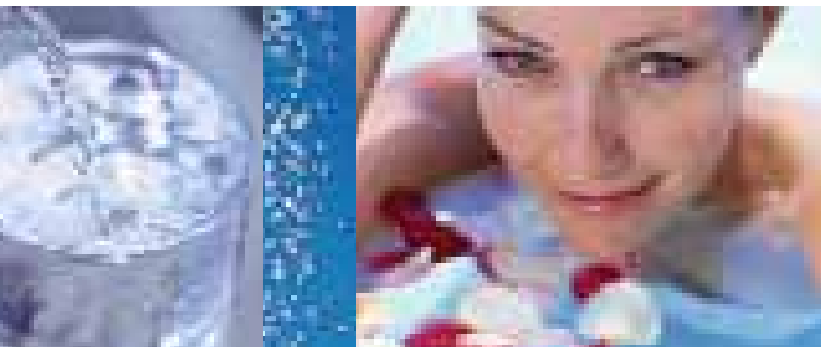
Aqua-Pure Cartridges

Aqua-Pure® water filtration and treatment products from CUNO Incorporated, a 3M Company, are the clear choice of plumbing professionals. Why? Because Aqua-Pure products have patented and proprietary features that help deliver superior performance and convenience unmatched in the industry.

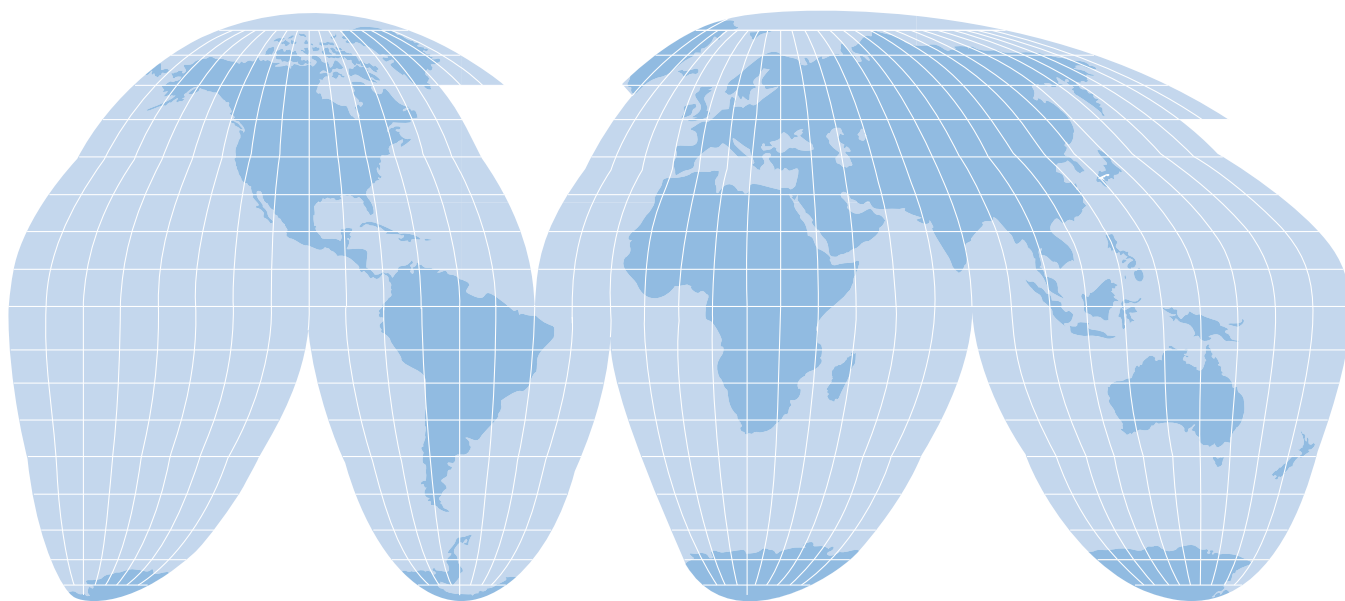
FOR CLEARLY *Great* WATER

Our Sanitary Quick Change (SQC) Cartridges, available throughout our line of drinking water systems, and now available in a whole house application, take the hassle out of cartridge changes, making them as easy as changing a light bulb.

With one of the industry's most complete product lines, Aqua-Pure and 3M products can help solve most of your water problems, from simple sediment issues to complex contamination problems. Our technical experts, in conjunction with our distributors, offer free water testing for an accurate diagnosis of the problem and a recommendation for the best solution. Homeowners and plumbing professionals have relied on Aqua-Pure products to provide quality water solutions for generations.



*Founded in 1912 and acquired by the 3M Company in 2005, CUNO Incorporated is a world leader in filtration products. CUNO products are used daily in millions of homes, restaurants, laboratories and factories worldwide. CUNO is a global company with production facilities worldwide.*



# CONTENTS

About Aqua-Pure

Inside Cover

## DRINKING WATER SYSTEMS

Drinking Water Concerns	2
Aqua-Pure Systems	3-5
Shower Filtration Systems	6

## WHOLE HOUSE FILTRATION SYSTEMS

Benefits and Types of Systems	7
Aqua-Pure Cartridge Systems	8-11
Refrigerators and Water Heaters	12

## HARD WATER AND OTHER TREATMENT SYSTEMS

Solutions to Hard Water Problems	13
Aqua-Pure Water Softeners	14-15
Aqua-Pure Backwash Systems	16
Aqua-Pure Arsenic Reduction Systems	17
High Iron Content	18
Other Common Water Problems	19

## A Growing Concern

# Drinking Water

Most public and private water supplies in the US are safe to drink. Yet a growing number of people are concerned about the quality of their drinking water. **In fact, according to a Water Quality Association Survey, 86% of Americans are concerned about their water quality\*.**

Many homeowners are clearly not satisfied with the taste of their tap water as demonstrated by the growing sales of filtration equipment and bottled water. Most municipalities add chlorine to their water to help assure its healthiness, but this can result in a less than desirable taste.

## What About Bottled Water?

Compare cost, quality and convenience — Aqua-Pure drinking water systems are the clear choice.

		BOTTLED WATER		
		1 Gallon Jugs and Sport Bottles	Water Cooler for Home or Office (5 Gallon Bottles)	
COST	Aqua-Pure Filtered Water	\$0.03 to \$0.21** per gallon, varies by system	\$1 for gallon jugs Up to \$8 per gallon for sports bottles	\$1.30 per gallon
QUALITY	Tap water is regulated by the EPA and Aqua-Pure filter claims are certified by WQA† or NSF††	Water quality is not always assured. Only limited FDA regulations apply.		
CONVENIENCE	Nothing to carry Out of sight under counter installation Great for food prep and can also be used to supply multiple locations	Bottles are heavy (8.3 pounds/gallon) and require lots of storage space  Not practical for food preparation and cannot supply other appliances  Cumbersome to change out bottles		

\* National Consumer Water Quality Survey, WQA, February 2001

\*\* Based on replacement cartridge cost

† Water Quality Association

†† NSF International

## WATER QUALITY ISSUES

Aqua-Pure products provide you and your family with a wide array of products designed to reduce certain contaminants from drinking water. Below is a summary of some of the contaminants that have been found in water supplies. To learn more about these contaminants visit [www.epa.gov/safewater](http://www.epa.gov/safewater).

**CRYPTOSPORIDIUM** A microorganism commonly found in lakes and rivers which is highly resistant to disinfection. Cryptosporidium has caused several large outbreaks of gastrointestinal illness, with symptoms that include diarrhea, nausea, and/or stomach cramps. People with severely weakened immune systems are likely to have more severe and more persistent symptoms than healthy individuals. <http://www.epa.gov/safewater/glossary.htm>

**MTBE** MTBE is a member of a group of chemicals commonly known as fuel oxygenates. Oxygenates are added to fuel to increase its oxygen content. MTBE is used in gasoline throughout the United States to reduce carbon monoxide and ozone levels caused by auto emissions. MTBE has replaced the use of lead as an octane enhancer since 1979. <http://www.epa.gov/safewater/contaminants/unregulated/mtbe.html>

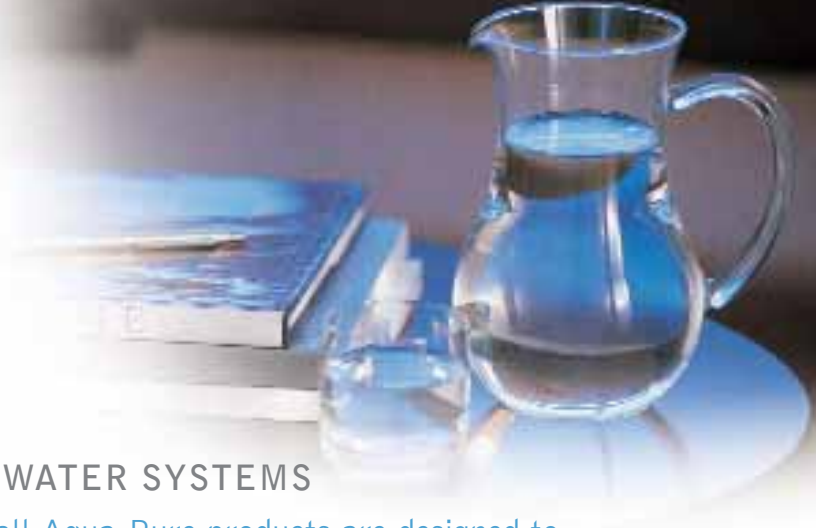
**LEAD** Lead can cause a variety of adverse health effects in humans. At relatively low levels of exposure, these effects may include delays in normal physical and mental development in babies and young children, slight deficits in the attention span, hearing, and learning abilities of children, and slight increases in the blood pressure of some adults. It appears that some of these effects may occur at blood lead levels so low as to be essentially without a threshold.

Lead occurs in drinking water from two sources: (1) Lead in raw water supplies, i.e., source water or distributed water, and (2) corrosion of plumbing materials in the water distribution system (corrosion by-products). Most lead contamination is from corrosion by-products. EPA estimates that about 20 percent of all public water systems have some lead service lines/connections within their distribution system. <http://www.epa.gov/safewater/dwh/t-ioc/lead.html>

**TOTAL DISSOLVED SOLIDS (TDS)** All of the dissolved solids in a water. TDS is measured on a sample of water that has passed through a very fine mesh filter to remove suspended solids. The water passing through the filter is evaporated and the residue represents the dissolved solids. <http://www.epa.gov/OGWDW/Pubs/gloss2.html#V>

**VOLATILE ORGANIC CHEMICALS (VOCs)** are a group of approximately 40 chemicals including benzene, toluene and styrene, that have EPA primary standards design to protect public health by limiting the levels of contaminants found in drinking water. <http://www.epa.gov/safewater/contaminants/index.html>

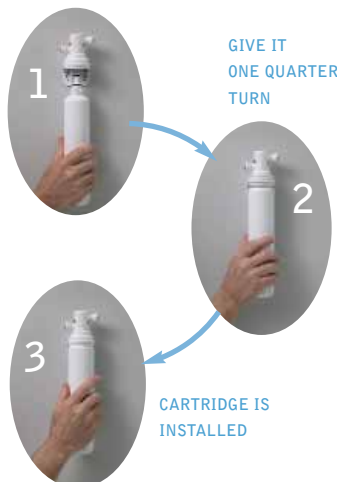
# Aqua-Pure®



## PREMIUM PERFORMANCE DRINKING WATER SYSTEMS

Installed under the kitchen or bathroom sink, all Aqua-Pure products are designed to provide you with great tasting drinking water on tap. Choose the system that best fits your needs and start enjoying bottled water quality right from your tap.

INSERT  
THE NEW  
CARTRIDGE



GIVE IT  
ONE QUARTER  
TURN

CARTRIDGE IS  
INSTALLED

Filter cartridge changes  
are easy, no tools required

## AQUA-PURE'S PATENTED SQC ADVANTAGE

Aqua-Pure drinking water systems feature our exclusive sanitary quick change (SQC) design. This patented design eliminates the difficulties and mess usually associated with traditional drop-in style systems and makes replacing a cartridge easier than changing a light bulb.

## INDEPENDENT DRINKING WATER FAUCET SYSTEMS

At about 0.6 gpm (2.3 lpm), these systems deliver filtered water through a separate faucet installed on your sink. **Standard faucet included. Designer Series faucets available. (See page 5)**

**AP-R05500**  
SQC RO  
(Reverse Osmosis)



Reduces chlorine taste & odor, total dissolved solids; includes 2.5 gal. (9.5 lit.) storage tank  
NSF Listed  
Available Less Faucet

Pre & Post Filter  
1 year capacity;  
RO module 1-3 year  
capacity

**AP-DWS1000**  
Metered Dual SQC  
Carbon



Reduces chlorine taste & odor, VOCs/MTBE/lead/cyst/turbidity  
NSF Listed  
Available Less Faucet

625 gallon  
(2,366 lit.)  
capacity

**AP EASY  
COMPLETE**  
SQC Carbon



Reduces chlorine taste & odor, lead & cyst, sediment & rust plus reduces limited VOCs  
NSF Listing  
Available Less Faucet

750 gallon  
(2,839 lit.) capacity  
@ 0.75 gpm (2.8 lpm)

**AP EASY LC**  
SQC Carbon



Reduces chlorine taste & odor, sediment & rust  
Reduces lead & cyst  
NSF Listing  
Available Less Faucet

750 gallon  
(2,839 lit.) capacity  
@ 0.75 gpm (2.8 lpm)

**AP EASY CS-S**  
SQC Carbon



Reduces chlorine taste & odor, sediment & rust  
NSF Listing  
Available Less Faucet

750 gallon  
(2,839 lit.) capacity  
@ 0.75 gpm (2.8 lpm)

## FULL FLOW SYSTEMS

See next page



Full flow systems are easy to install and economical to use.



## FULL FLOW SYSTEMS

At 2 gallons per minute (7.6 lpm), these systems improve the taste of the water that comes directly from your tap. These systems are easy to install and are an economical option for great tasting water in the kitchen or bath.

### AP EASY CYST-FF

SQC Carbon



Reduces cyst, chlorine taste & odor, sediment & rust  
NSF listed

2,000 gallon (7,571 lit.) life @ 2.0 gpm (7.6 lpm)

### AP EASY CS-FF

SQC Carbon



Reduces chlorine taste & odor, sediment & rust  
NSF listed

2,000 gallon (7,571 lit.) life @ 2.0 gpm (7.6 lpm)

### AP510

SQC Carbon



Reduces chlorine taste & odor  
NSF listed

2,000 gallon (7,571 lit.) capacity @ 2.0 gpm (7.6 lpm)

### AP200

Carbon



Reduces chlorine taste & odor  
NSF listed

2,000 gallon (7,571 lit.) capacity @ 2.0 gpm (7.6 lpm)



# Finishing Touches For Your Aqua-Pure Drinking Water System

DRINKING WATER FAUCETS  
WITH STYLE AND FUNCTIONALITY

To compliment today's kitchen designs, we  
offer a choice of faucet styles and finishes.



Standard  
Faucets\*



POLISHED  
CHROME



SATIN  
NICKEL



ANTIQUÉ  
BRONZE



BRUSHED  
STAINLESS STEEL

## Designer Series Dedicated Faucets

The Aqua-Pure Designer Series of Dedicated Faucets is available in today's most popular kitchen and bathroom faucet and hardware finishes. These faucets, with their graceful high arch, easily allow for cups and glasses, as well as pots and pans to be filled with cleaner, clearer filtered water right at the sink. The Designer Series is available in polished chrome, satin nickel, antique bronze and brushed stainless steel. Aqua-Pure has made high-end finishes available and affordable with this new series.

\*Available in NA (non-airgap)  
and AG (airgap) versions.

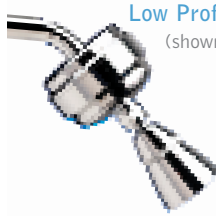
# The Ultimate Showering Experience

On the outside, what you see are beautifully designed filtration systems with sleek styling and finishes that match your decor. Inside are expertly-engineered components that help reduce the effects of chlorine while providing the utmost in quality and functionality.

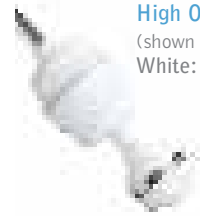


**Low Profile Shower Filter**  
(shown with optional showerhead)  
White: APLPSF-WH

also available in:  
Chrome: APLPSF-PC



**Low Profile All Metal Shower Filter**  
(shown with optional showerhead)  
Chrome: APLPSF-PC



**High Output Shower Filter**  
(shown with optional showerhead)  
White: APHOSH-WH

also available in:  
Chrome: APHOSH-PC



**Our Premier 5-Way Combo Filtered Showerhead**  
Shown: APSH5-CT

## ENJOY THE BENEFITS OF AQUA-PURE'S EASY-TO-INSTALL, EASY TO CHANGE SHOWER FILTRATION SYSTEMS:

**HEALTHIER HAIR** Hair is softer, has better texture and color-treated hair fades less quickly.

**SMOOTHER SKIN** Why use expensive lotions to treat the dry, itchy skin caused by bathing in chemically treated water? Showering with filtered water helps leave skin naturally soft and supple.

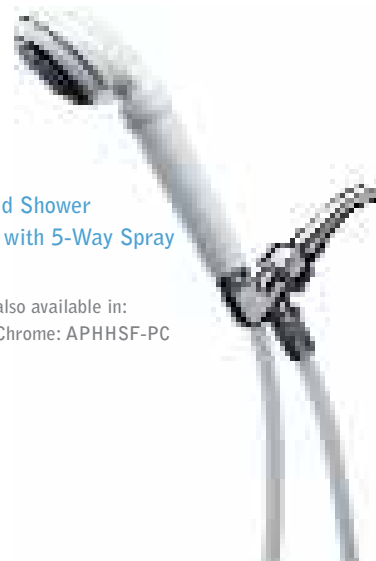
**CLEANER ENVIRONMENT** Breathing steamy, chlorine vapors is unpleasant and may be of concern for anyone with asthma or other lung problems. An Aqua-Pure shower filter reduces the odor and harmful fumes.



**Shower Handheld Filters**  
APHF-PC

**Designer Handheld Shower Filtration System with 5-Way Spray**  
APHHSF-WH

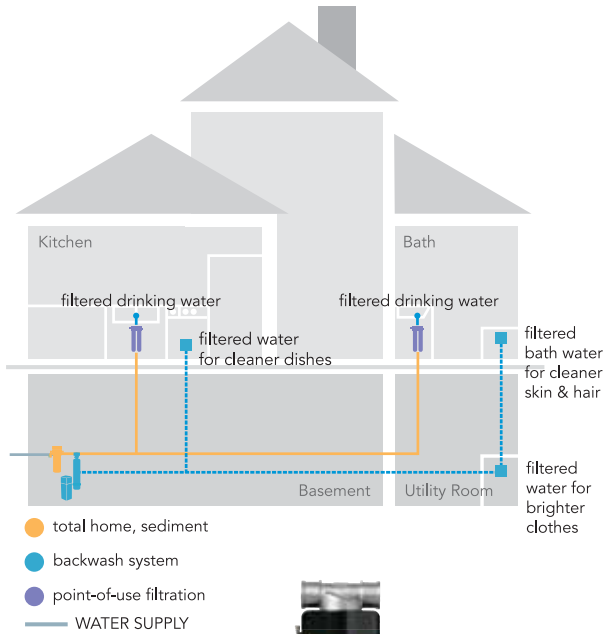
also available in:  
Chrome: APHHSF-PC



Matching showerheads available.

Convenient and Efficient

# Whole House Filtration



Almost every home can benefit from a filtration system that filters water as it first enters the home. Called “point of entry” systems, they are used to filter sediment and/or improve taste and reduce odor.

There are two types of systems: cartridge systems which are generally smaller and use a replaceable filter cartridge; and backwash systems which are generally larger and consist of a tank, filtration media and a control valve. Backwash systems have the advantage of being self-cleaning and require only occasional maintenance, typically done annually.



Two of Our Cartridge Systems  
AP801 Housing with included AP810 Cartridge  
and AP902 with included AP910R Cartridge



Backwash System

## WHICH SYSTEM SHOULD YOU CHOOSE?

Both systems can handle most sediment, chlorine taste and odor issues. Cartridge systems usually require a lower initial investment, but have higher operating cost due to the replacement cartridge cost. Conversely, backwash systems have higher initial cost, but may have a lower lifetime cost. Your contractor or plumbing professional can help you decide which system best suits your home.

## WHY IS SEDIMENT A CONCERN?

Sediment can cause a variety of problems from cloudy water, to stains, to damage of plumbing fixtures and appliances that use water. In fact, a 2001 Water Quality Association poll\* found that over half the respondents expressed concerns about sediments in their water.

Homes with well water frequently have an undesirable level of sediment in their water. Even homes with municipal water may have problems due to older water supply pipes and water service interruptions such as hydrant cleaning or new construction in the area.

The smell and taste of a home’s water supply can also be improved by using a whole house system with a carbon media filter.

\*2001 National Consumer Water Quality Survey

# Cartridge Systems

## FREQUENTLY ASKED QUESTIONS

**METAL OR PLASTIC HOUSING?** Metal systems offer the ultimate in durability, and the ability to filter higher temperature liquids. Plastic housings are sufficient for residential applications, filtering water at temperatures below 100°F (38°C). All Aqua-Pure housings include superior features and carry a 10 year limited warranty.

### TRANSPARENT OR OPAQUE PLASTIC?

Systems using either transparent or opaque materials help provide equal levels of filtration. With a transparent housing system you can see the filtration system working and have a visual indication of when the cartridge needs to be replaced. Please note that a drop in water pressure or flow are also indications that the cartridge needs replacing. Transparent housings are not suitable for outdoor applications.

**NO VALVE OR VALVE-IN HEAD?** Some models of plastic housings come with a shut-off valve built into the head of the housing. This feature simplifies installation and cartridge changes. Always check local plumbing codes for installation requirements.

**WHAT ABOUT WARRANTIES?** Aqua-Pure branded housings offer some of the industry's best warranties: Our plastic and stainless housings include a 10 year limited warranty. Most competitive housings and those found in home centers offer a 1 or 2 year warranty.

**WHICH CARTRIDGE IS BEST?** Aqua-Pure cartridges offer the maximum filtration performance and cartridge capacity. Information on individual cartridge features can be found on pages 10 and 11.

### WHAT'S THE DEAL WITH FLOW RATES?

The larger the diameter of the housing, the higher flow rates it can handle. In addition, larger diameter cartridges will generally last longer and have higher sediment capacities, meaning less frequent cartridge changes, thereby saving time and money. The same is true for length—the longer the housing (and cartridge), the higher flow rate and cartridge capacity.

*Aqua-Pure housings offer some of the industry's best warranties*

## STAINLESS STEEL HOUSINGS

*Electropolished 316L stainless steel for residential, high purity process and food grade environments*

*316L stainless steel helps provide longer lasting protection against highly corrosive environments*

*Sizes range from 4 to 48 cartridges with maximum flow rates between 32 and 384 gpm (121 and 1454 lpm)*



SS4 EPE-316L

SS8 EPE-316L

### SST1

1 high, standard diameter  
316 stainless head,  
304 stainless body  
3/8" NPT Vertical  
8 gpm (30.3 lpm)

### SST1HA

1 high, standard diameter  
316 stainless head,  
304 stainless body  
3/4" NPT Horizontal  
8 gpm (30.3 lpm)

### SST2HB

2 high, standard diameter  
316 stainless head,  
304 stainless body  
1" NPT Horizontal  
16 gpm (60.6 lpm)

### AP1610SS

1 high, standard diameter  
Includes AP110  
sediment cartridge  
8 gpm (30.3 lpm)

### AP2610SS

2 high, standard diameter  
Includes AP110-2  
sediment cartridge  
16 gpm (60.6 lpm)



# Aqua-Pure Filter Systems

## The Clear Choice of Plumbing Professionals

Plumbing professionals and homeowners choose Aqua-Pure housings for their performance and durability. Features include:

- advanced design for easier installations and cartridge replacement
- superior materials for longer life
- **10 year limited warranty on housing!**

### LARGE DIAMETER HOUSINGS

*for maximum flow rates, ideal for newer homes*

*Models available with and without premium AP810 sediment cartridges*



#### AP801-C (left)

1 high, opaque sump  
1" NPT

Includes AP110, wrench and mounting bracket  
20 gpm (75 lpm)

#### AP801 (second from left)

1 high, opaque sump  
1" NPT  
20 gpm (75 lpm)

#### AP801T-C

1 high, transparent sump  
1" NPT

Includes AP810, wrench and mounting bracket  
20 gpm (75 lpm)

#### AP801-1.5-C

1 high, opaque sump  
1 1/2" NPT

Includes AP110, wrench and mounting bracket  
28 gpm (106 lpm)

#### AP802 (third from left)

2 high, opaque sump  
1" NPT  
45 gpm (170 lpm)

#### AP802-1.5-C

2 high, opaque sump  
1 1/2" NPT  
Includes AP810, wrench and mounting bracket  
60 gpm (227 lpm)

#### AP902-903 (right)

SQC Style System  
1" NPT

Includes a head assembly with integral mounting bracket and a single cartridge

#### AP910R Sediment Cartridge

20 gpm (75 lpm)

#### AP917R Sediment and Chlorine Taste & Odor Cartridge

20 gpm (75 lpm)

*Aqua-Pure housings offer some of the industry's best warranties*

### PERFORMANCE VALVE IN HEAD PLASTIC HOUSINGS

*for easy installation and cartridge changes*



#### AP101T

1 high, transparent sump  
includes AP110 sediment cartridge  
8 gpm (30.3 lpm)



#### AP102T

2 high, transparent sump  
cartridges sold separately  
12 gpm (45.4 lpm)



#### AP11T

1 high, transparent sump  
includes AP110 sediment cartridge  
8 gpm (30.3 lpm)

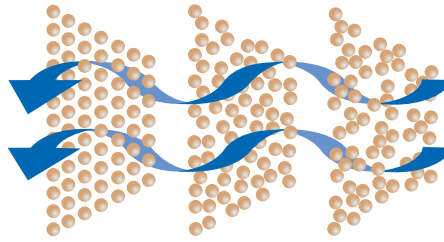
### PERFORMANCE PLASTIC HOUSINGS



## What micron rating should you choose?

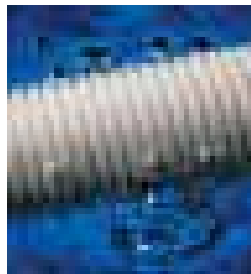
Most cartridges include a micron rating. One micron is equivalent to 0.000039 inches. (A human hair measures 50 to 70 microns in diameter.) Particles 5 microns and smaller usually do not cause a problem. We recommend starting with the smallest rated micron cartridge first, such as a 5 micron AP110. If the cartridge is loading up too fast, then you may choose a higher-rated micron cartridge to achieve the proper balance between performance and cartridge life.

## Aqua-Pure Sediment Cartridges



### PROGRESSIVE POROSITY CONSTRUCTION

Maximizes sediment-holding capacity by capturing sediment throughout the depth of the cartridge and are more rigid and durable than other types of cartridges.



### LOOK FOR THE RIDGES!

The ridges on Aqua-Pure cartridges maximize the surface area of the cartridge (60% more than smooth cartridges), further increasing the sediment-holding capacity of the cartridge and overall filter life.



Height	Nominal Micron	Max. Rate Flow	Model
9 <sup>3</sup> / <sub>4</sub> " (24.8 cm.)	5	8 gpm (30.3 lpm)	AP110
9 <sup>3</sup> / <sub>4</sub> " (24.8 cm.)	50	8 gpm (30.3 lpm)	AP124
19 <sup>1</sup> / <sub>2</sub> " (49.5 cm.)	5	16 gpm (60.6 lpm)	AP110-2

9<sup>3</sup>/<sub>4</sub>" cartridges fit AP11, AP101, and AP1610 housings.  
19<sup>1</sup>/<sub>2</sub>" cartridges fit AP12, AP102, and AP2610 housings.



Height	Nominal Micron	Max. Rate Flow	Model
9 <sup>3</sup> / <sub>4</sub> " (24.8 cm.)	5	20 gpm (75.7 lpm)	AP810
9 <sup>3</sup> / <sub>4</sub> " (24.8 cm.)	25	20 gpm (75.7 lpm)	AP811
9 <sup>3</sup> / <sub>4</sub> " (24.8 cm.)	50	20 gpm (75.7 lpm)	AP814*
20" (50.8 cm.)	5	45 gpm (170.3 lpm)	AP810-2
20" (50.8 cm.)	25	45 gpm (170.3 lpm)	AP811-2
20" (50.8 cm.)	50	45 gpm (170.3 lpm)	AP814-2*

9<sup>3</sup>/<sub>4</sub>" cartridges fit the AP801 housing.  
20" cartridges fit the AP802 housing.

\*Filament-wound, media blanket cartridge

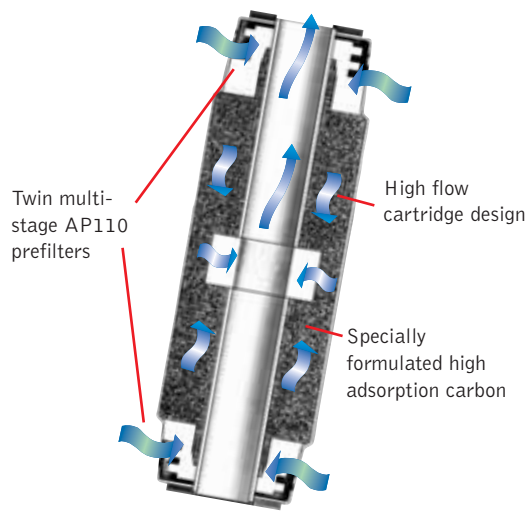
# Aqua-Pure Chlorine Taste and Odor Cartridges

**GREAT TASTE** Aqua-Pure's AP117 helps improve the taste of water by reducing undesirable chlorine taste and odor in your water.

**LONG LASTING** The AP117 lasts up to 10,000 gallons at 3 gpm (37,854 lit. at 11.4 lpm)\*. So no matter what your application, it will usually require less frequent replacement than competitive cartridges.

**ADVANCED DESIGN** The AP117 is manufactured using a proprietary CUNO manufacturing process. The AP117 allows water to enter from both ends of the cartridge and has two built-in pre-filters, as compared to most competitive carbon cartridges, the AP117 helps deliver:

- More chlorine taste and odor reduction capacity
- Higher flow rates
- Lower pressure drops
- Superior ability to handle sediment



AP117's high flow, high carbon adsorption design



## AP117

Height	Nominal Micron	Max. Rate Flow (gpm) / Gallon life**	Model
9 3/4" (24.8 cm.)	5	3 / 10,000 (11.4 lpm / 37,854 lit.)	AP117
19 1/2" (49.5 cm.)	5	6 / 20,000 (22.7 lpm / 75,708 lit.)	AP117 (stack 2 high)

9 3/4" cartridges fit AP11, AP101, and AP1610 housings.  
19 1/2" cartridges fit AP12, AP102, and AP2610 housings.



## AP817

Height	Micron	Max. Rate Flow (gpm) / Gallon life**	Model
9 3/4" (24.8 cm.)	5	5 / 40,000 (19 lpm / 151,416 lit.)	AP817
20" (50.8 cm.)	5	10 / 80,000 (37.9 lpm / 302,832 lit.)	AP817-2

9 3/4" cartridges fit the AP801 housing.  
20" cartridges fit the AP802 housing.

*In addition to the popular cartridges listed here, many more cartridges are available in a range of sizes and micron ratings to address a variety of other water problems. An Aqua-Pure specialist can help you select the best cartridge to address your water problem.*

*Call 1-800-222-7880 and ask for Technical Services.*

\*Based on manufacturer's testing.

\*\*Max. rate flow per gallon life based on manufacturer's testing.



# Protecting Refrigerators and Water Heaters

## REFRIGERATOR FILTERS

For In-Line Water Dispensers and Ice Makers

Performance of refrigerators with automatic ice makers and built-in water dispensers improves when an Aqua-Pure filter is used. Lasting between 6 months and 1 year (750 to 2,500 gallons / 2,839 to 9,464 liters), Aqua-Pure filters reduce scale and improve taste and odor.



### IL-IM-01

Reduces chlorine taste & odor, sediment & rust  
2,500 gallon (9,464 liters) capacity @ 0.5 gpm (1.89 lpm)  
1/4" push-in fittings  
NSF listed



### IL-IM-02

Reduces chlorine taste & odor, sediment & rust  
Reduces cyst  
750 gallon (2,839 liters) capacity @ 0.5 gpm (1.89 lpm)  
1/4" push-in fittings  
NSF listed



### AP717

Reduces sediment, chlorine taste & odor, with scale inhibition  
1,500 gallon life (5,678 liters) capacity @ 0.5 gpm (1.89 lpm)  
NSF listed

## WATER HEATERS

When scale prevention is the primary goal, especially with instantaneous or tank-less water heaters, Aqua-Pure offers a choice of economical solutions.

The AP430SS products are ideally suited for installation on the supply side of a water heater and help to maintain maximum system efficiency and help extend their life.

The AP141T system helps provide scale inhibition as well as sediment reduction for up to six months, helping to extend the life of all water-using appliances.



### AP430SS

Includes AP431 cartridge  
Up to 6 gpm (22.7 lpm)  
Hot water scale reduction



### AP141T

Includes AP420 cartridge  
5 micron sediment reduction  
Up to 8 gpm (30.3 lpm)  
Scale reduction

# Aqua-Pure's Easy Solutions to Hard Water Problems

Hard water is water that contains elevated levels of calcium, magnesium, or both minerals. According to the U.S. Geological Survey, over 70% of U.S. water supplies are designated as hard to very hard\*. Visible indication of hard water is the appearance of white spots on chrome faucets, shower doors and dishware. A less visible but more serious problem is build-up of lime and scale on plumbing fixtures and appliances that use water—especially water heaters. This build-up can result in damage to fixtures and appliances, shortening their useful life. Softeners use an ion exchange process to reduce the calcium and magnesium from the incoming water supply.

To find out if your water is hard, have it tested. Your authorized Aqua-Pure professional will analyze your test results and recommend the water softener system that is best for your home.

## Enjoy the Benefits of Soft Water

**SAVE MONEY** When you clean with soft water you use less detergent.

**REDUCE WATER SPOTS** Less spotting on dishes and glasses.

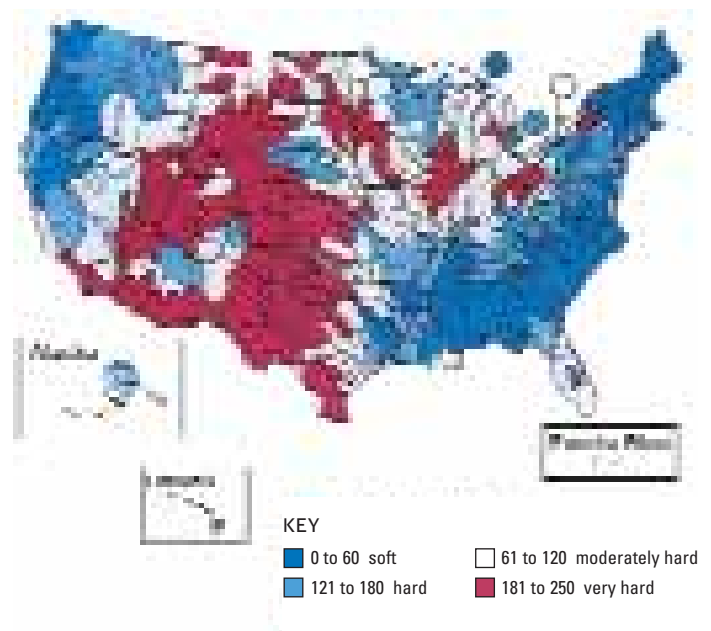
**BATHE IN SOFT WATER** Have healthier looking, better feeling skin. Hair washes and rinses easier, and has better texture and shine.

**HELP CLOTHES LAST LONGER** A Purdue University study\*\* found that clothing washed in hard water wears out up to 15% faster than clothes washed in soft water. In addition, colors fade and whites become dingy more quickly in hard water.

**SAVE ENERGY** By reducing scale build-up you can improve the efficiency of your water heater by up to 27%!

**PROTECT PLUMBING** Helps prevent scale build-up and extend the life of appliances that use water such as water heaters, dishwashers, and clothes washers.

Water Hardness in U.S.  
(measured as calcium carbonate in milligrams/liters)\*



\* <http://water.usgs.gov/owq/map1.jpeg>

\*\* Purdue University Research Report, "The Benefits of Using Soft vs. Hard Water", 10/98



# Aqua-Pure Water Softeners

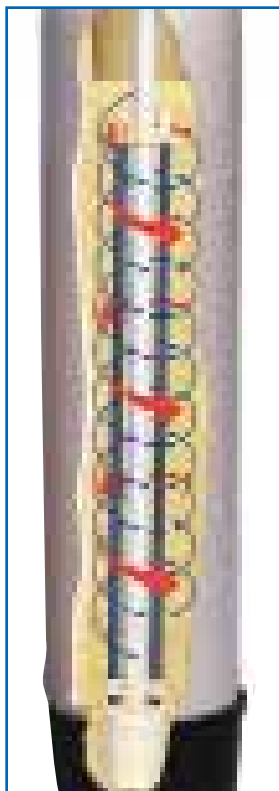
## SUPERIOR PERFORMANCE

Unlike retail softeners, Aqua-Pure's water softeners offer patented features that improve the efficiency and durability of the system, as well as help to provide you with consistently soft, high quality water.

## FULL-FEATURED, EASY TO MAINTAIN

- Aqua-Pure offers a variety of softener control valves that are simple to program.
- Patented Cyclone distributor assembly (pictured at left) lifts and turns over the resin bed, freeing it from sediment and debris. The larger basket allows the sediment and debris to flush out of the system with minimal pressure drop.
- Conditioning tank with patented Uniflex™ connection eliminates threaded openings that can strip. One piece construction has no glue joints or heat welded bonds to fail.
- Bypass valve allows untreated water to be used for watering the lawn or washing the car.
- Proprietary square brine tank reduces the amount of floor space required. Safety brine valve helps prevent brine overflow in the event of a power outage.
- Patented multi-level salt support shelf keeps sediment and debris away from the brine draw area. This allows the use of most types of water softener salt.

Aqua-Pure always recommends a sediment prefilter before the softener. See page 7 for details.



*Aqua-Pure systems clean and regenerate more completely than competitive systems.*

*Choose from over 30 models of residential softeners including cabinet, two tank and twin alternating models.*

# Aqua-Pure Water Softeners

## Aqua-Pure offers three control valve technologies:

- ELECTRONIC-METERED, DEMAND-INITIATED SOFTENERS
  - State-of-the-art valve allows you to monitor and control every function and cycle. Meters your water usage and regenerates only when necessary.
  - No need for vacation settings—just soft water when you need it.
  - Regeneration is delayed to a time when softened water is not required.
  - Salt monitors, available on select models, have a flashing light and audible beep to tell you when it is time to replenish the salt.
- ELECTRONIC TIME CLOCK
  - Using touchpads, the time of day, salt setting and regeneration frequency can be adjusted.
- MECHANICAL TIME CLOCK
  - Simply turn the dial to the correct time of day and all regeneration functions occur automatically.
- IRON REDUCTION
  - Reduces a higher level of iron than standard softeners
  - Provides soft, iron-reduced water with one unit



CWS SERIES



## Aqua-Pure Solutions Backwash Systems

**Aqua-Pure offers two control valve technologies:**

- **ELECTRONIC-METERED, DEMAND-INITIATED BACKWASH UNITS**
  - State-of-the-art valve allows you to monitor and control every function and cycle. Meters your water usage and backwashes only when necessary.
  - No need for vacation settings
  - Backwashing is delayed to a time when the demand for fresh, clean water is not required.
- **MECHANICAL TIME CLOCK**
  - Simply turn the dial to the correct time of day and all backwashing functions occur automatically

**CBF SERIES**

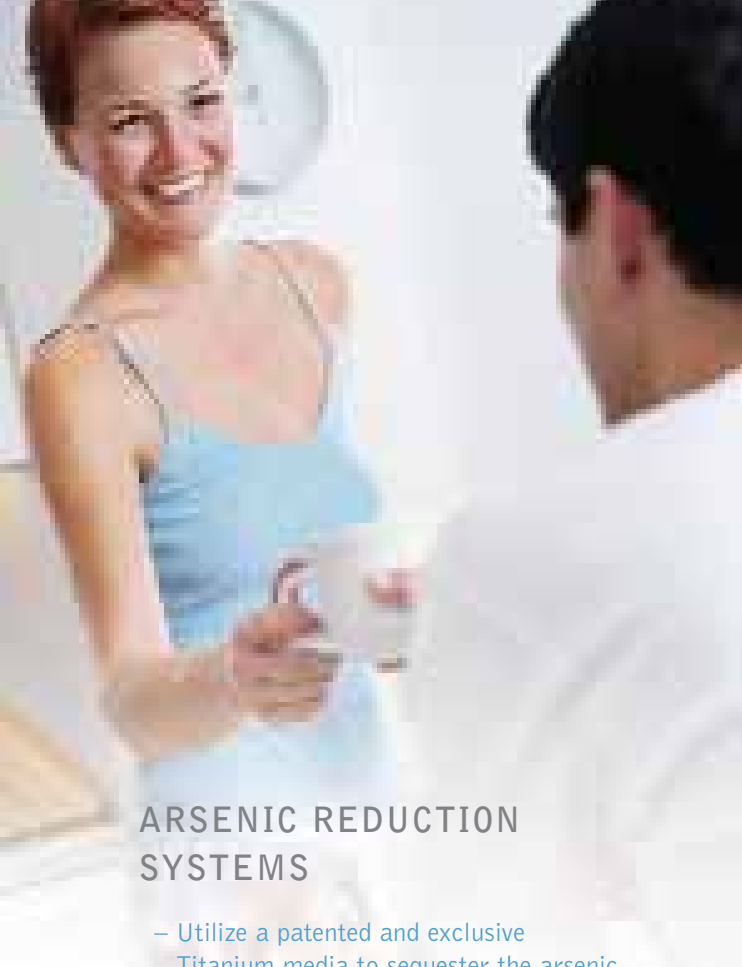


## Aqua-Pure Ultraviolet Light Series Solutions

Aqua-Pure's wide range of ultraviolet light units offer a variety of applications from point-of-use drinking water systems to whole house.

These systems sterilize 99.9% of common water borne bacteria and viruses.

Ultraviolet light is nature's way to help protect your water without the addition of harmful chemicals.



## Aqua-Pure Solutions Arsenic Reduction

“Arsenic is a toxic element that is known to increase the risk of adverse health effects in people who drink water containing it. Arsenic is a known human carcinogen that causes cancer of the skin, bladder, lung, kidney and liver. It also causes increased risk of cardiovascular disease (skin keratoses) and diabetes.”\* The primary pathway for arsenic to create these issues is via ingesting water, either by drinking or using in cooking, that contains arsenic. Arsenic is a contaminant found across the United States with heavier concentrations in certain geographic areas like the Northeast and the upper Midwest.\*\*

### ARSENIC REDUCTION SYSTEMS

- Utilize a patented and exclusive Titanium media to sequester the arsenic
- Media can last up to 3 years or more
- Contain state of the art electronic valve technology
- Set it once and forget it. Automatic backwash operation
- 5 Year Limited Warranty

In January 2006, the US EPA lowered the maximum allowable level of Arsenic found in residential water systems from 50 ppb to 10 ppb. Many homes across America are on well water systems, either private or public. These systems are difficult and costly to manage for arsenic, so Aqua-Pure has introduced a whole house arsenic reduction system that meets the EPA levels for all water distributed throughout the home.



ASB SERIES

\*Steven Spayd “Arsenic Water Treatment for Residential Wells in New Jersey” January 2005

\*\*EPA.gov



## Reduce Iron and Avoid Problems

Iron is one of the earth's most plentiful resources, making up at least five percent of the earth's crust. Rainfall seeping through the soil dissolves iron in the earth's surface and carries it into the natural water supply.

Even when water contains relatively large quantities of iron it may appear clear when drawn, but will rapidly turn red upon exposure to air. This oxidation process causes the red/brown stains on clothes and plumbing fixtures. Water with high iron can be very objectionable in taste and odor, and can cause rust colored stains on fixtures.

What is the solution? First, it is important to have your water tested. Aqua-Pure, in conjunction with its distributors, offers free water analysis and equipment recommendations. This complete water test determines iron concentration, pH, hardness, TDS, manganese, tannins, turbidity, and alkalinity. From here, the correct treatment solution can be determined.

# Aqua-Pure Solutions High Iron Content

## IRON REDUCTION SOFTENERS

### CBF Series

These softeners have a special iron reduction media capable of handling iron content up to 3 ppm (clear water or ferrous iron).

- Suitable for mild iron problems
- Simultaneously solves iron and hardness problems
- Uses water softener salt to regenerate



## CHEM-FREE IRON REDUCTION SYSTEMS

By introducing oxygen to the water source, soluble ferrous iron is converted to its insoluble ferric form. The resulting iron particles are reduced via a backwashing filter. Systems require no chemicals to regenerate and are virtually maintenance free.

### APIF Series

- For well water applications up to 15 ppm
- Suitable for more difficult iron problems
- Automatically adjusts pH of acidic water for reduced corrosion
- No chemicals required to regenerate

These systems are a sampling of the many water treatment systems Aqua-Pure has to offer. Please contact your local Aqua-Pure distributor for more information about our complete line of water treatment products.



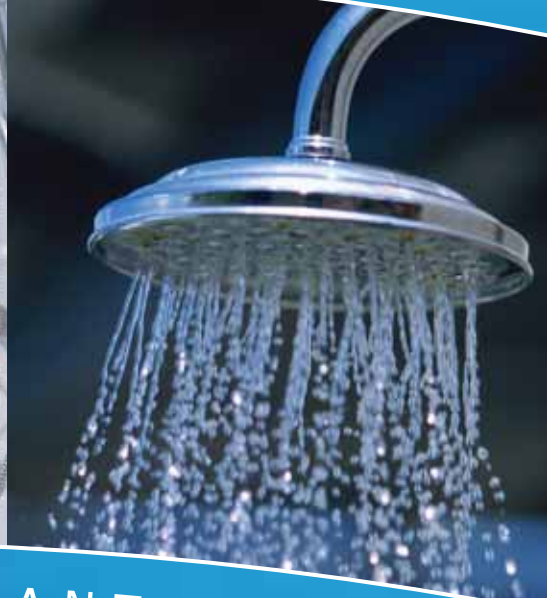
# Aqua-Pure Solutions

## Other Common Water Problems

Start by testing your water! At no cost to you, Aqua-Pure technicians will analyze your water supply and recommend the system that best meets your requirements. The following chart provides a starting point for determining the possible types of water problems.

PROBLEM/ INDICATION	DESCRIPTION	AQUA-PURE SOLUTION
<b>MANGANESE/ brown-black stains</b>	Manganese is a metal similar to iron which causes brown/black stains. It can cause staining in concentrations as low as 0.05 parts per million (ppm). Manganese can be reduced using the same backwash and oxidation type systems used to reduce iron.	APIF Series CBF Series
<b>ACIDIC WATER/ blue-green stains</b>	Acidic water tends to act aggressively towards plumbing and fixtures, causing corrosion and staining, most often a blue/green stain on fixtures which comes from the copper pipes. pH is measured on a scale of <b>1 to 14 units</b> , with 7.0 units being neutral, <b>less than 7.0</b> units being acidic and any reading greater than 7.0 being alkaline. The lower the pH the worse the corrosion problem. A pH in the range of 6.5 to 8.5 is desirable. Acidic water is corrected by neutralizing the water, by passing the water through a bed of processed limestone or similar media.	APUN Series
<b>HYDROGEN SULFIDE/ rotten egg odor</b>	Hydrogen sulfide is a gas with a smell similar to rotten eggs. This gas can get into a water supply as a result of the decay of organic matter, naturally occurring sulfur, and as a result of certain types of bacteria. Even low concentrations are offensive as well as highly corrosive. Because hydrogen sulfide is a gas, an aeration method for reduction is preferred.	APIF Series*

\*An air-to-water type pressure tank must be used.



## THE AQUA-PURE ADVANTAGE

At CUNO, we realize just offering the best products is not enough. Our distribution partners are carefully selected and are backed by industry leading sales support and programs. When you choose Aqua-Pure, you choose quality products from a proven leader in water filtration.

To learn more about Aqua-Pure please visit  
[www.aquapure.com](http://www.aquapure.com)



**CUNO Incorporated**

400 Research Parkway  
Meriden, CT 06450, U.S.A.  
Toll Free: 1-800-222-7880  
203-237-5541

[www.aquapure.com](http://www.aquapure.com) • [www.cuno.com](http://www.cuno.com)