

Clinpro™ Sealant



Pink and powerful

Summary of advantages

- Color-change technology to visualize placement
- Convenient direct-delivery syringe for easy application
- Low viscosity to flow easily into pits and fissures
- Contains and releases fluoride
- Bonds to enamel

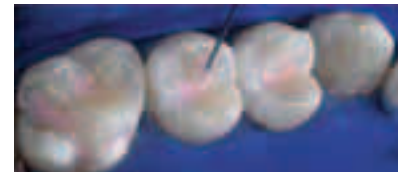
Protect and defend teeth against decay

With its unique patented color-change technology 3M™ ESPE™ Clinpro™ Sealant makes sealant application easier than ever. This fluoride-releasing sealant goes on pink and cures to a natural white. Applied with our convenient ultra-fine syringe tip, its low-viscosity formula flows easily into pits and fissures, yet is viscous enough to stay in place during application. Clinpro sealant requires fewer occlusal adjustments than a filled sealant and provides powerful, long-lasting protection against caries.*

Backed by 10 years of clinical success, 3M ESPE is a market leader in preventive products. We are committed to providing the most advanced and patient-friendly solutions to dental professionals and their patients.



Before



After



Photography by Dr. Chris Bryant

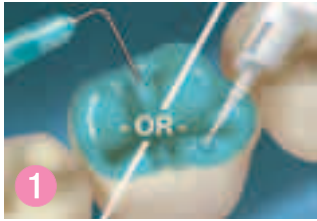
* The American Dental Association (ADA) and Caries Management By Risk Assessment (CAMBRA) recommend sealants as an aid to prevent caries.

Easy-to-use technique

3M™ ESPE™ Clinpro™ Sealant offers color-change technology for ultimate placement control.

Tooth preparation: Thoroughly clean teeth to remove plaque and debris from enamel surfaces and fissures. Rinse thoroughly with water and dry.

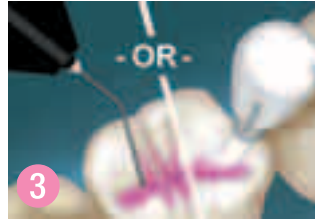
Note: Do not use any cleaning medium that contains oils or fluoride. Prepare adhesive according to dispensing instructions.



Apply etchant to all enamel surfaces to be sealed. (Note: 3M™ ESPE™ Adper™ Prompt™ Self-Etch Adhesive may be used instead of the acid-etch technique when placing Clinpro sealant.)



Thoroughly rinse teeth to remove etchant, then dry the etched surfaces.



Apply Clinpro sealant into pits and fissures.



Light-cure the sealant with a halogen, LED or plasma light for the amount of time specified to cure the sealant.

Ordering Information



Item # Product Information

3M™ ESPE™ Clinpro™ Sealant

12626	Introductory Kit, Syringes Contains: 2 – 1.2 ml Clinpro Sealant Syringes; 1 – 3 ml 3M™ ESPE™ Scotchbond™ Etchant Syringe; 20 – Sealant Syringe Tips (Black); 25 – Etchant Syringe Tips (Blue)
12627	Refill, Syringes Contains: 1 – 1.2 ml Clinpro Sealant Syringe; 10 – Sealant Syringe Tips (Black)
12621	Introductory Kit, Bottles Contains: 2 – 6 ml Clinpro Sealant Bottles; 1 – 9 ml 3M™ ESPE™ Scotchbond™ Etchant Bottle; 2 – Brush Handles; 60 – Brush Tips; 50 – Fiber Tips; 1 – Mixing Well with Cover
12622	Refill, Bottle Contains: 1 – 6 ml Clinpro Sealant Bottle
12626TP	Clinpro Sealant and Adper Prompt Trial Kit Contains: 1 – 1.2 ml Clinpro Sealant Syringe; 10 – Sealant Syringe Tips (Black); 20 L-Pop™ Applicators*

* MSDS available. Call 1-800-634-2249

Get the power of pink! Contact your local 3M ESPE sales representative to learn more about our full line of preventive products.

Customer Care Center: 1-800-634-2249 www.3MESPE.com/PreventiveCare

3M ESPE

Dental Products

3M Center
Building 275-2SE-03
St. Paul, MN 55144-1000
U.S.A.
1-800-634-2249

3M Canada

Post Office Box 5757
London, Ontario N6A 4T1
Canada
1-888-363-3685

Please recycle. Printed in U.S.A.
© 3M 2011. All rights reserved.
70-2013-0468-3

3M, ESPE, Adper, Clinpro, L-Pop, Prompt and Scotchbond are trademarks of 3M or 3M ESPE AG. Used under license in Canada.